

Converting Colors

Decimal(14991307)

Have a look what the booklet for
Decimal(14991307) contains.

Decimal(14991307)	3
<i>Conversions</i>	4
<i>Details</i>	6
<i>Harmonies</i>	11
<i>Previews</i>	23
<i>Color Blindness Simulation</i>	26
<i>CSS Examples</i>	29

Color

Decimal(14991307)

Conversions

Conversions Part 1

Format	Color
Hex	E4BFCB
RGB	228, 191, 203
RGB Percent	89%, 75%, 80%
CMY	0.1059, 0.2510, 0.2039
CMYK	0.00, 0.16, 0.11, 0.11
HSL	341°, 41%, 82%
HSV	341°, 16%, 89%
XYZ	61.4052, 58.0674, 64.4716
YIQ	203.4310, 18.2000, 11.5760

Conversions

Conversions Part 2

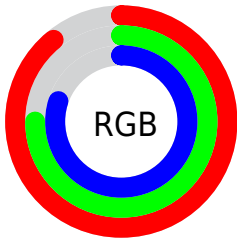
Format	Color
R _Y B	228, 191, 203
Decimal	14991307
CIE Lab	80.78, 15.10, -1.09
CIE LCh	81, 15.141, 355.875
Yxy	58.0674, 0.3338, 0.3157
Android (android.graphics.Color)	4293181387 (0xFFE4BFCB)
YUV	203.4310, -0.2125, 21.5470
Hunter-Lab	76.2020, 10.4858, 3.1783

Details

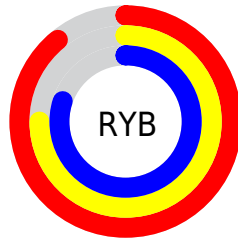
The Decimal color **14991307** is a light color, and the websafe version is hex **FFCCCC**. A complement of this color would be **12575960**, and the grayscale version is **13355979**.

A 20% lighter version of the original color is **16775167**, and **11307413** is the 20% darker color. If you saturate the color by 10%, you get **14985404**, and if you desaturate by 10%, it is **14997210**.

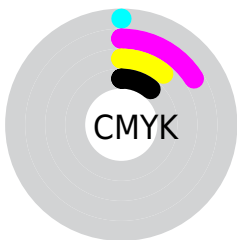
Distribution



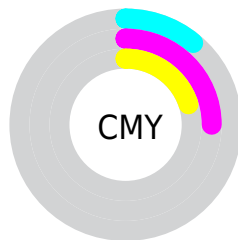
- Red (89%)
- Green (75%)
- Blue (80%)



- Red (89%)
- Yellow (75%)
- Blue (80%)



- Cyan (0%)
- Magenta (16%)
- Yellow (11%)
- Black (11%)



- Cyan (11%)
- Magenta (25%)
- Yellow (20%)

Brightness & Saturation Gradients

These gradients show how the Decimal color 14991307 changes by changing the brightness by 10 percent. The first figure shows a shift by +10% for each color and the second figure -10%.

Similar to the brightness gradients but the following saturation gradients show a change of the Decimal color 14991307 by changing the saturation by 10% instead.

14991307

14991307

16777215

13149360

16775167

11307413

9531515

7886690

6176843

4598324

3085599

1900550

0

 14991307

 14991307

 14985404

 14997210

 14979500

 15003114

 14973853

 15007737

 14967949

 15007743

 14962046

 14956143

 14950239

 14944592

 14942282

Harmonies

Analogous

The Analogous color harmony consists of three colors that are next to each other on the color wheel.



14270937



14991307



15187901

Triad

The Triadic color harmony groups three colors that are evenly spaced from another and form a triangle on the color wheel.



14991307



13093807



11128543

Complementary

The Complementary color scheme is a pair of colors which are on the opposite of each other on the color wheel.



14991307



12575960

Split Complementary

Split-complementary colors differ from the complementary color scheme. The scheme consists of three colors, the original color and two neighbors of the complement color.



10801620



14991307



11980728

Square

The Square scheme is like the rectangle color scheme, but the four colors are evenly spaced on the color wheel.



14991307



14075821



11194822



12045028

Rectangle

The Rectangle color scheme consists of four colors that form a rectangle on the color wheel.



14991307



14991797



11194822



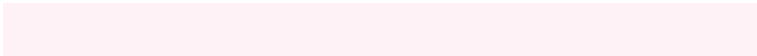
10932188

Sweetspot

The Sweet Spot groups the original color and five complimentary colors.



14991307



16773878



14204900



8419450



0



8421504

Same Dimension

The Same Dimension uses a secret algorithm to generate beautiful new colors.



14991307



16764894



14992831



7563115



11731002



3342353

Inverse Universe

The Inverse Universe completely reimagines the original color for something new.



14991307



16764894



12574436



7563115



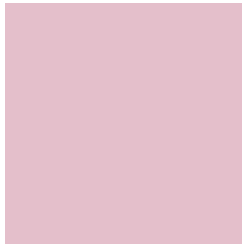
11731002



3342353

Previews

White Background



This preview shows how the Decimal color 14991307 looks on a white background.

Color Contrast Check

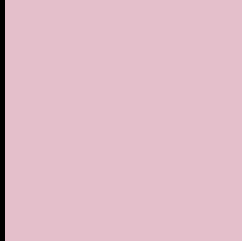
Large Text (above 18pt) WCAG AA × Fail

Any Text WCAG AA × Fail

Large Text (above 18pt) WCAG AAA × Fail

Any Text WCAG AAA × Fail

Black Background



This preview shows how the Decimal color 14991307 looks on a black background.

Color Contrast Check

Large Text (above 18pt) WCAG AA ✓ Pass

Any Text WCAG AA ✓ Pass

Large Text (above 18pt) WCAG AAA ✓ Pass

Any Text WCAG AAA ✓ Pass

If you want to check with other color combinations, try the [Color Contrast Checker](#).

Decimal 14991307 Background



This preview shows how black text looks on a background with the Decimal color 14991307.




This preview shows how white text looks on a background with the Decimal color 14991307.

Color Blindness Simulation

Color vision deficiency is a very complex topic, and I could not describe the different causes any better than Wikipedia does, so if you want to learn more, you should check out their [article about color blindness](#).

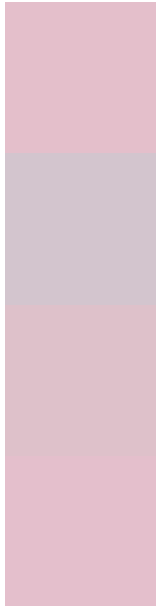
Dichromacy





Tritanopia
14991309

Trichromacy



Original Color
14991307

Protanomaly
13878734

Deuteranomaly
14598602

Tritanomaly
14991308

Monochromacy



Original Color
14991307

Achromatopsia
13355979

Achromatomaly
13944779

CSS Examples

Text

The CSS property to change the color of the text to Decimal 14991307 is called "color". The color property can be set on classes, ids or directly on the HTML element.

This example shows how text in the color #E4BFCB looks like.

```
.text, #text, p{  
    color:#E4BFCB  
}
```

If you want to add a text shadow in that color use the text-shadow property, you can generate a text shadow directly with our [CSS Text Shadow Generator](#).

Here you see how black text with a 4 pixel #E4BFCB colored shadow looks like.

```
.shadow{ text-shadow: 4px 4px 2px #E4BFCB
}
```

Border

The CSS property to change the border of an element to Decimal 14991307 is called "border". The border property can be set on classes, ids or directly on the HTML element.

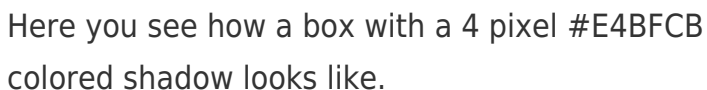
This example shows the color as border, it can be applied via the CSS property "border" or "border-color".

```
.border, #border, table{ border:4px solid
#E4BFCB }
```

If only the border color should be changed use the property `border-color`.

```
.border{ border-color:#E4BFCB }
```

If you want to add a box shadow in that color use:



Here you see how a box with a 4 pixel #E4BFCB colored shadow looks like.

```
.boxshadow{ -moz-box-shadow:4px 4px 4px  
4px #E4BFCB; -webkit-box-shadow:4px 4px  
4px 4px #E4BFCB; box-shadow:4px 4px 4px  
4px #E4BFCB }
```

Background

The CSS property to change the background color of an element to Decimal 14991307 is called "background". The background property can be set on classes, ids or directly on the HTML element.

```
.background, #background, body{  
background:#E4BFCB }
```

If only the background color should be changed can be used:

```
.background{ background-color:#E4BFCB }
```

This example shows the color as background, it is applied via the CSS property "background".

To optimize and compress your CSS code, you can use our [online CSS compressor and optimizer](#) based on csstidy. If you want to create a linear or radial gradient as background or border, check our [CSS Gradient Generator](#).

Hey! You found this booklet interesting? Support Converting Colors with the new Membership Option!

The pro membership hides all ads, plus gives you double the colors in the color bucket, and more awesome pro features!

[Learn more, Memberships starting at \\$2.50/m!](#)

**Follow me
on Twitter!**

@ConvertingColor