

Converting Colors

Decimal(14992564)

Have a look what the booklet for
Decimal(14992564) contains.

| | |
|--|----|
| Decimal(14992564) | 3 |
| <i>Conversions</i> | 4 |
| <i>Details</i> | 6 |
| <i>Harmonies</i> | 11 |
| <i>Previews</i> | 23 |
| <i>Color Blindness Simulation</i> | 26 |
| <i>CSS Examples</i> | 29 |

Color

Decimal(14992564)

Conversions

Conversions Part 1

| Format | Color |
|-------------|---------------------------|
| Hex | E4C4B4 |
| RGB | 228, 196, 180 |
| RGB Percent | 89%, 77%, 71% |
| CMY | 0.1059, 0.2314, 0.2941 |
| CMYK | 0.00, 0.14, 0.21, 0.11 |
| HSL | 20°, 47%, 80% |
| HSV | 20°, 21%, 89% |
| XYZ | 59.9731, 59.2691, 51.4592 |
| YIQ | 203.7440, 24.2080, 1.8080 |

Conversions

Conversions Part 2

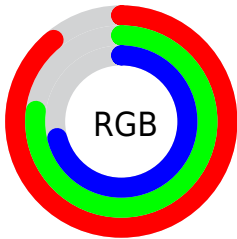
| Format | Color |
|-------------------------------------|--|
| RYB | 228, 204, 180 |
| Decimal | 14992564 |
| CIELab | 81.44, 8.86, 12.21 |
| CIELCh | 81, 15.086, 54.048 |
| Yxy | 59.2691, 0.3513, 0.3472 |
| Android (android.graphics.Color) | 4293182644 (0xFFE4C4B4) |
| YUV | 203.7440, -11.7058, 21.2725 |
| Hunter-Lab | 76.9864, 4.3267, 14.2600 |

Details

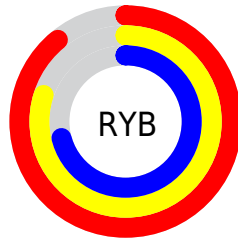
The Decimal color **14992564** is a light color, and the websafe version is hex **FFCCCC**. A complement of this color would be **11850980**, and the grayscale version is **13421772**.

A 20% lighter version of the original color is **16776684**, and **11308671** is the 20% darker color. If you saturate the color by 10%, you get **14988701**, and if you desaturate by 10%, it is **14996427**.

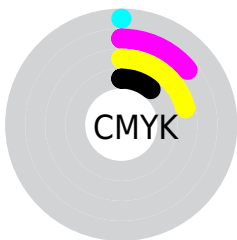
Distribution



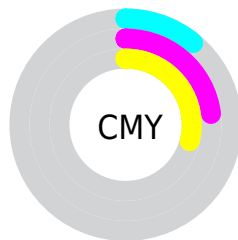
- Red (89%)
- Green (77%)
- Blue (71%)



- Red (89%)
- Yellow (80%)
- Blue (71%)



- Cyan (0%)
- Magenta (14%)
- Yellow (21%)
- Black (11%)



- Cyan (11%)
- Magenta (23%)
- Yellow (29%)

Brightness & Saturation Gradients

These gradients show how the Decimal color 14992564 changes by changing the brightness by 10 percent. The first figure shows a shift by +10% for each color and the second figure -10%.

Similar to the brightness gradients but the following saturation gradients show a change of the Decimal color 14992564 by changing the saturation by 10% instead.

 14992564

 14992564

16777215

 13150617

 16776684

 11308671

 9532774

 7822414

 6178103

 4533794

 3021068

 1638400

 0

 14992564

 14992564

 14988701

 14996427

 14984838

 15000290

 14980720

 15004408

 14976857

 15007743

 14972994

 14969131

 14965268

 14961664

Harmonies

Analogous

The Analogous color harmony consists of three colors that are next to each other on the color wheel.



15319487



14992564



14272687

Triad

The Triadic color harmony groups three colors that are evenly spaced from another and form a triangle on the color wheel.



14992564



11326407



13289700

Complementary

The Complementary color scheme is a pair of colors which are on the opposite of each other on the color wheel.



14992564



11850980

Split Complementary

Split-complementary colors differ from the complementary color scheme. The scheme consists of three colors, the original color and two neighbors of the complement color.



12111078



14992564



10932949

Square

The Square scheme is like the rectangle color scheme, but the four colors are evenly spaced on the color wheel.



14992564



12177849



11194593



14336987

Rectangle

The Rectangle color scheme consists of four colors that form a rectangle on the color wheel.



14992564



13618095



11194593



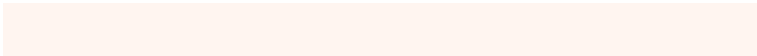
12896742

Sweetspot

The Sweet Spot groups the original color and five complimentary colors.



14992564



16774640



14988500



8419959



0



8421504

Same Dimension

The Same Dimension uses a secret algorithm to generate beautiful new colors.



14992564



16766143



14998708



7564135



11746048



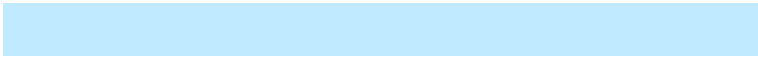
3346688

Inverse Universe

The Inverse Universe completely reimagines the original color for something new.



11850980



12577535



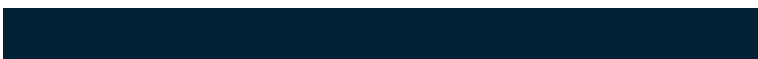
11844836



6778739



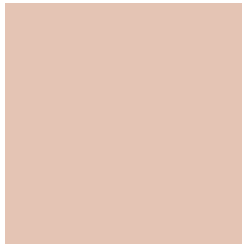
30643



8755

Previews

White Background



This preview shows how the Decimal color 14992564 looks on a white background.

Color Contrast Check

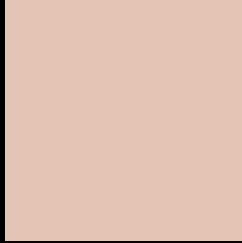
Large Text (above 18pt) WCAG AA × Fail

Any Text WCAG AA × Fail

Large Text (above 18pt) WCAG AAA × Fail

Any Text WCAG AAA × Fail

Black Background



This preview shows how the Decimal color 14992564 looks on a black background.

Color Contrast Check

Large Text (above 18pt) WCAG AA ✓ Pass

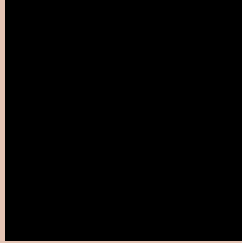
Any Text WCAG AA ✓ Pass

Large Text (above 18pt) WCAG AAA ✓ Pass

Any Text WCAG AAA ✓ Pass

If you want to check with other color combinations, try the [Color Contrast Checker](#).

Decimal 14992564 Background



This preview shows how black text looks on a background with the Decimal color 14992564.




This preview shows how white text looks on a background with the Decimal color 14992564.

Color Blindness Simulation

Color vision deficiency is a very complex topic, and I could not describe the different causes any better than Wikipedia does, so if you want to learn more, you should check out their [article about color blindness](#).

Dichromacy





Tritanopia
15188175

Trichromacy



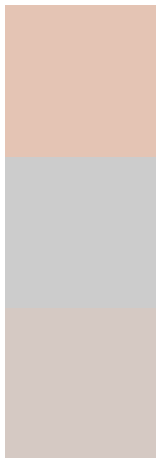
Original Color
14992564

Protanomaly
14272694

Deuteranomaly
15057844

Tritanomaly
15122885

Monochromacy



Original Color
14992564

Achromatopsia
13421772

Achromatomaly
14010819

CSS Examples

Text

The CSS property to change the color of the text to Decimal 14992564 is called "color". The color property can be set on classes, ids or directly on the HTML element.

This example shows how text in the color #E4C4B4 looks like.

```
.text, #text, p{  
    color:#E4C4B4  
}
```

If you want to add a text shadow in that color use the text-shadow property, you can generate a text shadow directly with our [CSS Text Shadow Generator](#).

Here you see how black text with a 4 pixel #E4C4B4 colored shadow looks like.

```
.shadow{ text-shadow: 4px 4px 2px #E4C4B4
}
```

Border

The CSS property to change the border of an element to Decimal 14992564 is called "border". The border property can be set on classes, ids or directly on the HTML element.

This example shows the color as border, it can be applied via the CSS property "border" or "border-color".

```
.border, #border, table{ border:4px solid
#E4C4B4 }
```

If only the border color should be changed use the property `border-color`.

```
.border{ border-color:#E4C4B4 }
```

If you want to add a box shadow in that color use:

Here you see how a box with a 4 pixel #E4C4B4 colored shadow looks like.

```
.boxshadow{ -moz-box-shadow:4px 4px 4px  
4px #E4C4B4; -webkit-box-shadow:4px 4px  
4px 4px #E4C4B4; box-shadow:4px 4px 4px  
4px #E4C4B4 }
```

Background

The CSS property to change the background color of an element to Decimal 14992564 is called "background". The background property can be set on classes, ids or directly on the HTML element.

```
.background, #background, body{  
background:#E4C4B4 }
```

If only the background color should be changed can be used:

```
.background{ background-color:#E4C4B4 }
```

This example shows the color as background, it is applied via the CSS property "background".

To optimize and compress your CSS code, you can use our [online CSS compressor and optimizer](#) based on csstidy. If you want to create a linear or radial gradient as background or border, check our [CSS Gradient Generator](#).

Hey! You found this booklet interesting? Support Converting Colors with the new Membership Option!

The pro membership hides all ads, plus gives you double the colors in the color bucket, and more awesome pro features!

[Learn more, Memberships starting at \\$2.50/m!](#)

**Follow me
on Twitter!**

@ConvertingColor