

# Converting Colors

Decimal(14993089)

Have a look what the booklet for  
Decimal(14993089) contains.

<b>Decimal(14993089)</b> .....	3
<i><b>Conversions</b></i> .....	4
<i><b>Details</b></i> .....	6
<i><b>Harmonies</b></i> .....	11
<i><b>Previews</b></i> .....	23
<i><b>Color Blindness Simulation</b></i> .....	26
<i><b>CSS Examples</b></i> .....	29

# **Color**

**Decimal(14993089)**

# Conversions

## Conversions Part 1

Format	Color
Hex	E4C6C1
RGB	228, 198, 193
RGB Percent	89%, 78%, 76%
CMY	0.1059, 0.2235, 0.2431
CMYK	0.00, 0.13, 0.15, 0.11
HSL	9°, 39%, 83%
HSV	9°, 15%, 89%
XYZ	61.8146, 60.7324, 58.9166
YIQ	206.4000, 19.4850, 4.8050

# Conversions

## Conversions Part 2

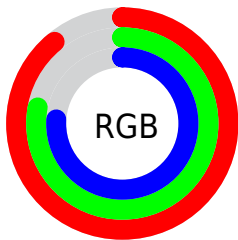
<b>Format</b>	<b>Color</b>
R <sub>Y</sub> B	228, 199, 193
Decimal	14993089
CIE Lab	82.23, 9.77, 6.39
CIE LCh	82, 11.680, 33.195
Yxy	60.7324, 0.3406, 0.3347
Android (android.graphics.Color)	4293183169 (0xFFE4C6C1)
YUV	206.4000, -6.6062, 18.9432
Hunter-Lab	77.9310, 5.2064, 9.7279

# Details

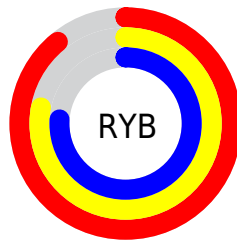
The Decimal color **14993089** is a light color, and the websafe version is hex **FFCCCC**. A complement of this color would be **12705764**, and the grayscale version is **13553358**.

A 20% lighter version of the original color is **16777209**, and **11309196** is the 20% darker color. If you saturate the color by 10%, you get **14987946**, and if you desaturate by 10%, it is **14998232**.

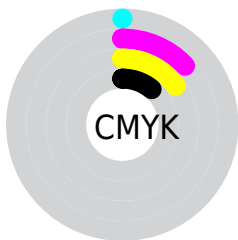
# Distribution



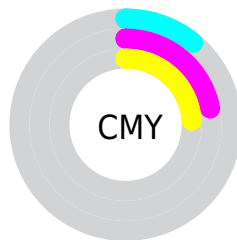
- Red (89%)
- Green (78%)
- Blue (76%)



- Red (89%)
- Yellow (78%)
- Blue (76%)



- Cyan (0%)
- Magenta (13%)
- Yellow (15%)
- Black (11%)



- Cyan (11%)
- Magenta (22%)
- Yellow (24%)

# Brightness & Saturation Gradients

These gradients show how the Decimal color 14993089 changes by changing the brightness by 10 percent. The first figure shows a shift by +10% for each color and the second figure -10%.

Similar to the brightness gradients but the following saturation gradients show a change of the Decimal color 14993089 by changing the saturation by 10% instead.



 14993089

 14993089

16777215

 13151142

 16777209

 11309196

 9533298

 7888474

 6178370

 4599852

 3087128

 1835008

 0

 14993089

 14993089

 14987946

 14998232

 14983059

 15003119

 14977917

 15007743

 14973030

 14967887

 14963000

 14957857

 14952971

 14950656

# Harmonies

## Analogous

The Analogous color harmony consists of three colors that are next to each other on the color wheel.



14927308



14993089



14666169

# Triad

The Triadic color harmony groups three colors that are evenly spaced from another and form a triangle on the color wheel.



14993089



12374722



12832226

# Complementary

The Complementary color scheme is a pair of colors which are on the opposite of each other on the color wheel.



14993089



12705764

# Split Complementary

Split-complementary colors differ from the complementary color scheme. The scheme consists of three colors, the original color and two neighbors of the complement color.



12046560



14993089



11785165

# Square

The Square scheme is like the rectangle color scheme, but the four colors are evenly spaced on the color wheel.



14993089



13160634



11654104



13683167

# Rectangle

The Rectangle color scheme consists of four colors that form a rectangle on the color wheel.



14993089



14207927



11654104



12504802

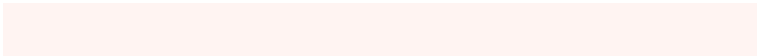


# Sweetspot

The Sweet Spot groups the original color and five complimentary colors.



14993089



16774386



14991839



8419704



0



8421504



# Same Dimension

The Same Dimension uses a secret algorithm to generate beautiful new colors.



14993089



16767185



14997441



7563623



11737600



3344128

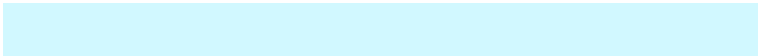


# Inverse Universe

The Inverse Universe completely reimagines the original color for something new.



12705764



13760767



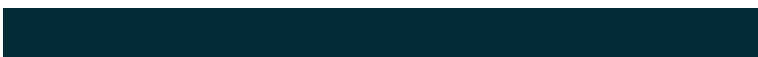
12701412



6779251



39347

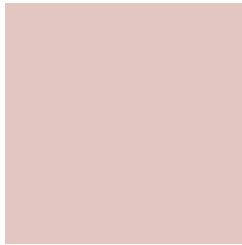


11315



# Previews

## White Background



This preview shows how the Decimal color 14993089 looks on a white background.

## Color Contrast Check

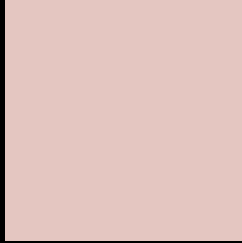
Large Text (above 18pt) WCAG AA × Fail

Any Text WCAG AA × Fail

Large Text (above 18pt) WCAG AAA × Fail

Any Text WCAG AAA × Fail

# Black Background



This preview shows how the Decimal color 14993089 looks on a black background.

## Color Contrast Check

Large Text (above 18pt) WCAG AA ✓ Pass

Any Text WCAG AA ✓ Pass

Large Text (above 18pt) WCAG AAA ✓ Pass

Any Text WCAG AAA ✓ Pass

If you want to check with other color combinations, try the [Color Contrast Checker](#).



## Decimal 14993089 Background



This preview shows how black text looks on a background with the Decimal color 14993089.




This preview shows how white text looks on a background with the Decimal color 14993089.

# Color Blindness Simulation

Color vision deficiency is a very complex topic, and I could not describe the different causes any better than Wikipedia does, so if you want to learn more, you should check out their [article about color blindness](#).

## Dichromacy





**Tritanopia**  
15123411

# Trichromacy



**Original Color**  
14993089

**Protanomaly**  
14273219

**Deuteranomaly**  
15058625

**Tritanomaly**  
15058124

# Monochromacy



**Original Color**  
14993089

**Achromatopsia**  
13553358

**Achromatomaly**  
14076873

# CSS Examples

## Text

The CSS property to change the color of the text to Decimal 14993089 is called "color". The color property can be set on classes, ids or directly on the HTML element.

This example shows how text in the color #E4C6C1 looks like.

```
.text, #text, p{  
    color:#E4C6C1  
}
```

If you want to add a text shadow in that color use the text-shadow property, you can generate a text shadow directly with our [CSS Text Shadow Generator](#).

Here you see how black text with a 4 pixel #E4C6C1 colored shadow looks like.

```
.shadow{ text-shadow: 4px 4px 2px #E4C6C1
}
```

## Border

The CSS property to change the border of an element to Decimal 14993089 is called "border". The border property can be set on classes, ids or directly on the HTML element.

This example shows the color as border, it can be applied via the CSS property "border" or "border-color".

```
.border, #border, table{ border:4px solid
#E4C6C1 }
```

If only the border color should be changed use the property `border-color`.

```
.border{ border-color:#E4C6C1 }
```

If you want to add a box shadow in that color use:

Here you see how a box with a 4 pixel #E4C6C1 colored shadow looks like.

```
.boxshadow{ -moz-box-shadow:4px 4px 4px  
4px #E4C6C1; -webkit-box-shadow:4px 4px  
4px 4px #E4C6C1; box-shadow:4px 4px 4px  
4px #E4C6C1 }
```

# Background

The CSS property to change the background color of an element to Decimal 14993089 is called "background". The background property can be set on classes, ids or directly on the HTML element.

```
.background, #background, body{  
background:#E4C6C1 }
```

If only the background color should be changed can be used:

```
.background{ background-color:#E4C6C1 }
```

This example shows the color as background, it is applied via the CSS property "background".

To optimize and compress your CSS code, you can use our [online CSS compressor and optimizer](#) based on csstidy. If you want to create a linear or radial gradient as background or border, check our [CSS Gradient Generator](#).



Hey! You found this booklet interesting? Support Converting Colors with the new Membership Option!

The pro membership hides all ads, plus gives you double the colors in the color bucket, and more awesome pro features!

**[Learn more, Memberships starting at \\$2.50/m!](#)**

**Follow me  
on Twitter!**

@ConvertingColor