

Converting Colors

Decimal(14993330)

Have a look what the booklet for
Decimal(14993330) contains.

Decimal(14993330)	3
<i>Conversions</i>	4
<i>Details</i>	6
<i>Harmonies</i>	11
<i>Previews</i>	23
<i>Color Blindness Simulation</i>	26
<i>CSS Examples</i>	29

Color

Decimal(14993330)

Conversions

Conversions Part 1

Format	Color
Hex	E4C7B2
RGB	228, 199, 178
RGB Percent	89%, 78%, 70%
CMY	0.1059, 0.2196, 0.3020
CMYK	0.00, 0.13, 0.22, 0.11
HSL	25°, 48%, 80%
HSV	25°, 22%, 89%
XYZ	60.4542, 60.5552, 50.6215
YIQ	205.2770, 24.0250, -0.3830

Conversions

Conversions Part 2

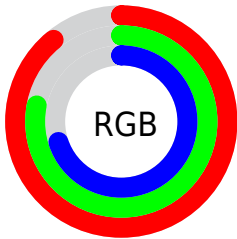
Format	Color
R _Y B	228, 214, 178
Decimal	14993330
CIE Lab	82.14, 6.98, 14.27
CIE LCh	82, 15.886, 63.917
Yxy	60.5552, 0.3522, 0.3528
Android (android.graphics.Color)	4293183410 (0xFFE4C7B2)
YUV	205.2770, -13.4476, 19.9281
Hunter-Lab	77.8172, 2.4920, 15.9028

Details

The Decimal color **14993330** is a light color, and the websafe version is hex **FFCCCC**. A complement of this color would be **11718628**, and the grayscale version is **13487565**.

A 20% lighter version of the original color is **16777194**, and **11309437** is the 20% darker color. If you saturate the color by 10%, you get **14989979**, and if you desaturate by 10%, it is **14996681**.

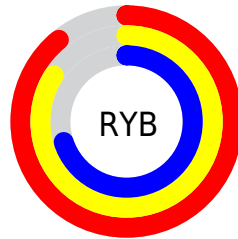
Distribution



Red (89%)

Green (78%)

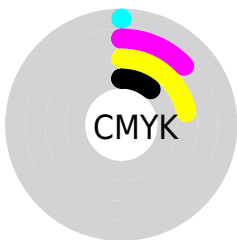
Blue (70%)



Red (89%)

Yellow (84%)

Blue (70%)

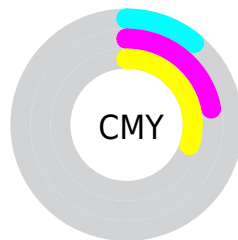


Cyan (0%)

Magenta (13%)

Yellow (22%)

Black (11%)



Cyan (11%)

Magenta (22%)

Yellow (30%)

Brightness & Saturation Gradients


These gradients show how the Decimal color 14993330 changes by changing the brightness by 10 percent. The first figure shows a shift by +10% for each color and the second figure -10%.

Similar to the brightness gradients but the following saturation gradients show a change of the Decimal color 14993330 by changing the saturation by 10% instead.

 14993330

 14993330

16777215

 13151383

 16777194

 11309437

 9533284

 7823180

 6178614

 4534560

 3021834

 1573376

 0

 14993330

 14993330

 14989979

 14996681

 14986628

 15000032

 14983022

 15003638

 14979671

 15006975

 14976320

 15007743

 14972969

 14969362

 14966784

Harmonies

Analogous

The Analogous color harmony consists of three colors that are next to each other on the color wheel.



15451068



14993330



14077103

Triad

The Triadic color harmony groups three colors that are evenly spaced from another and form a triangle on the color wheel.



14993330



11130318



13813989

Complementary

The Complementary color scheme is a pair of colors which are on the opposite of each other on the color wheel.



14993330



11718628

Split Complementary

Split-complementary colors differ from the complementary color scheme. The scheme consists of three colors, the original color and two neighbors of the complement color.



12570090



14993330



10933468

Square

The Square scheme is like the rectangle color scheme, but the four colors are evenly spaced on the color wheel.



14993330



11916479



11456999



14861530

Rectangle

The Rectangle color scheme consists of four colors that form a rectangle on the color wheel.



14993330



13356977



11456999



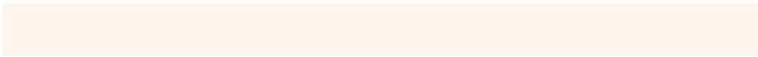
13355751

Sweetspot

The Sweet Spot groups the original color and five complimentary colors.



14993330



16774637



14987983



8419957



0



8421504

Same Dimension

The Same Dimension uses a secret algorithm to generate beautiful new colors.



14993330



16767421



14999730



7564391



11750144



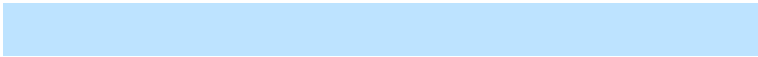
3347712

Inverse Universe

The Inverse Universe completely reimagines the original color for something new.



11718628



12444671



11712228



6778483



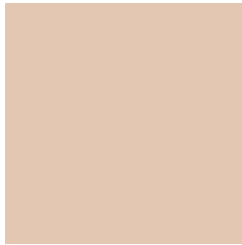
26803



7731

Previews

White Background



This preview shows how the Decimal color 14993330 looks on a white background.

Color Contrast Check

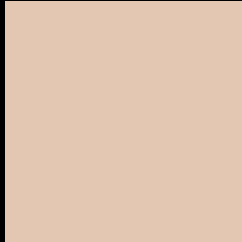
Large Text (above 18pt) WCAG AA × Fail

Any Text WCAG AA × Fail

Large Text (above 18pt) WCAG AAA × Fail

Any Text WCAG AAA × Fail

Black Background



This preview shows how the Decimal color 14993330 looks on a black background.

Color Contrast Check

Large Text (above 18pt) WCAG AA ✓ Pass

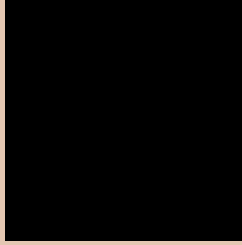
Any Text WCAG AA ✓ Pass

Large Text (above 18pt) WCAG AAA ✓ Pass

Any Text WCAG AAA ✓ Pass

If you want to check with other color combinations, try the [Color Contrast Checker](#).

Decimal 14993330 Background



This preview shows how black text looks on a background with the Decimal color 14993330.




This preview shows how white text looks on a background with the Decimal color 14993330.

Color Blindness Simulation

Color vision deficiency is a very complex topic, and I could not describe the different causes any better than Wikipedia does, so if you want to learn more, you should check out their [article about color blindness](#).

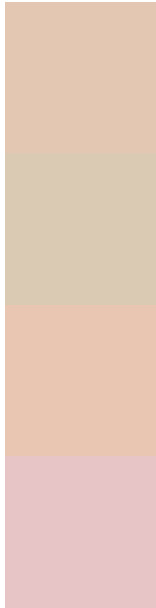
Dichromacy





Tritanopia
15254226

Trichromacy



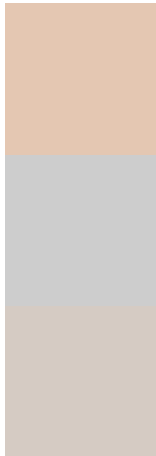
Original Color
14993330

Protanomaly
14404275

Deuteranomaly
15255218

Tritanomaly
15189190

Monochromacy



Original Color
14993330

Achromatopsia
13487565

Achromatomaly
14011331

CSS Examples

Text

The CSS property to change the color of the text to Decimal 14993330 is called "color". The color property can be set on classes, ids or directly on the HTML element.

This example shows how text in the color #E4C7B2 looks like.

```
.text, #text, p{  
  color:#E4C7B2  
}
```

If you want to add a text shadow in that color use the text-shadow property, you can generate a text shadow directly with our [CSS Text Shadow Generator](#).

Here you see how black text with a 4 pixel #E4C7B2 colored shadow looks like.

```
.shadow{ text-shadow: 4px 4px 2px #E4C7B2
}
```

Border

The CSS property to change the border of an element to Decimal 14993330 is called "border". The border property can be set on classes, ids or directly on the HTML element.

This example shows the color as border, it can be applied via the CSS property "border" or "border-color".

```
.border, #border, table{ border:4px solid
#E4C7B2 }
```

If only the border color should be changed use the property `border-color`.

```
.border{ border-color:#E4C7B2 }
```

If you want to add a box shadow in that color use:

Here you see how a box with a 4 pixel #E4C7B2 colored shadow looks like.

```
.boxshadow{ -moz-box-shadow:4px 4px 4px  
4px #E4C7B2; -webkit-box-shadow:4px 4px  
4px 4px #E4C7B2; box-shadow:4px 4px 4px  
4px #E4C7B2 }
```

Background

The CSS property to change the background color of an element to Decimal 14993330 is called "background". The background property can be set on classes, ids or directly on the HTML element.

```
.background, #background, body{  
background:#E4C7B2 }
```

If only the background color should be changed can be used:

```
.background{ background-color:#E4C7B2 }
```

This example shows the color as background, it is applied via the CSS property "background".

To optimize and compress your CSS code, you can use our [online CSS compressor and optimizer](#) based on csstidy. If you want to create a linear or radial gradient as background or border, check our [CSS Gradient Generator](#).

Hey! You found this booklet interesting? Support Converting Colors with the new Membership Option!

The pro membership hides all ads, plus gives you double the colors in the color bucket, and more awesome pro features!

[Learn more, Memberships starting at \\$2.50/m!](#)

**Follow me
on Twitter!**

@ConvertingColor