

# Converting Colors

Decimal(14993360)

Have a look what the booklet for  
Decimal(14993360) contains.

<b>Decimal(14993360)</b> .....	3
<b><i>Conversions</i></b> .....	4
<b><i>Details</i></b> .....	6
<b><i>Harmonies</i></b> .....	11
<b><i>Previews</i></b> .....	23
<b><i>Color Blindness Simulation</i></b> .....	26
<b><i>CSS Examples</i></b> .....	29

# **Color**

**Decimal(14993360)**

# Conversions

## Conversions Part 1

Format	Color
Hex	E4C7D0
RGB	228, 199, 208
RGB Percent	89%, 78%, 82%
CMY	0.1059, 0.2196, 0.1843
CMYK	0.00, 0.13, 0.09, 0.11
HSL	341°, 35%, 84%
HSV	341°, 13%, 89%
XYZ	63.8035, 61.8949, 68.2586
YIQ	208.6970, 14.3950, 8.9470

# Conversions

## Conversions Part 2

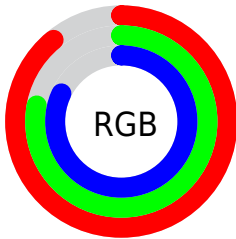
Format	Color
R <sub>Y</sub> B	228, 199, 208
Decimal	14993360
CIE Lab	82.86, 11.69, -0.73
CIE LCh	83, 11.709, 356.442
Yxy	61.8949, 0.3290, 0.3191
Android (android.graphics.Color)	4293183440 (0xFFE4C7D0)
YUV	208.6970, -0.3436, 16.9287
Hunter-Lab	78.6733, 7.0840, 3.6301

# Details

The Decimal color **14993360** is a light color, and the websafe version is hex **FFCCCC**. A complement of this color would be **13100251**, and the grayscale version is **13750737**.

A 20% lighter version of the original color is **16777215**, and **11309466** is the 20% darker color. If you saturate the color by 10%, you get **14987456**, and if you desaturate by 10%, it is **14999264**.

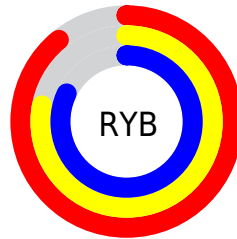
# Distribution



Red (89%)

Green (78%)

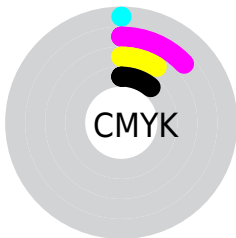
Blue (82%)



Red (89%)

Yellow (78%)

Blue (82%)

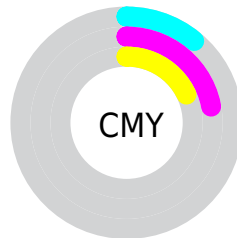


Cyan (0%)

Magenta (13%)

Yellow (9%)

Black (11%)



Cyan (11%)

Magenta (22%)

Yellow (18%)

# Brightness & Saturation Gradients

These gradients show how the Decimal color 14993360 changes by changing the brightness by 10 percent. The first figure shows a shift by +10% for each color and the second figure -10%.

Similar to the brightness gradients but the following saturation gradients show a change of the Decimal color 14993360 by changing the saturation by 10% instead.



14993360

14993360

16777215

13151412

11309466

9598848

7888743

6244175

4665400

3152675

1900813

0

 14993360

 14993360

 14987456

 14999264

 14981553

 15005167

 14975905

 15007743

 14970001

 14964097

 14958194

 14952290

 14946642

 14942279

# Harmonies

## Analogous

The Analogous color harmony consists of three colors that are next to each other on the color wheel.



14469595



14993360



15124421

# Triad

The Triadic color harmony groups three colors that are evenly spaced from another and form a triangle on the color wheel.



14993360



13488571



12047328

# Complementary

The Complementary color scheme is a pair of colors which are on the opposite of each other on the color wheel.



14993360



13100251

# Split Complementary

Split-complementary colors differ from the complementary color scheme. The scheme consists of three colors, the original color and two neighbors of the complement color.



11785688



14993360



12637122

# Square

The Square scheme is like the rectangle color scheme, but the four colors are evenly spaced on the color wheel.



14993360



14273977



11982284



12701924

# Rectangle

The Rectangle color scheme consists of four colors that form a rectangle on the color wheel.



14993360



14993855



11982284



11916510



# Sweetspot

The Sweet Spot groups the original color and five complimentary colors.



14993360



16774648



14403556



8419707



0



8421504



# Same Dimension

The Same Dimension uses a secret algorithm to generate beautiful new colors.



14993360



16767461



14994631



7563115



11730999



3342352



# Inverse Universe

The Inverse Universe completely reimagines the original color for something new.



14993360



16767461



13098980



7563115



11730999

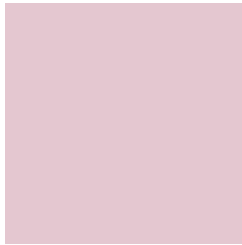


3342352



# Previews

## White Background



This preview shows how the Decimal color 14993360 looks on a white background.

## Color Contrast Check

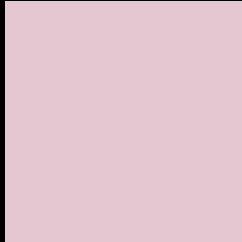
Large Text (above 18pt) WCAG AA × Fail

Any Text WCAG AA × Fail

Large Text (above 18pt) WCAG AAA × Fail

Any Text WCAG AAA × Fail

# Black Background



This preview shows how the Decimal color 14993360 looks on a black background.

## Color Contrast Check

Large Text (above 18pt) WCAG AA ✓ Pass

Any Text WCAG AA ✓ Pass

Large Text (above 18pt) WCAG AAA ✓ Pass

Any Text WCAG AAA ✓ Pass

If you want to check with other color combinations, try the [Color Contrast Checker](#).



## Decimal 14993360 Background



This preview shows how black text looks on a background with the Decimal color 14993360.



This preview shows how white text looks on a background with the Decimal color 14993360.

# Color Blindness Simulation

Color vision deficiency is a very complex topic, and I could not describe the different causes any better than Wikipedia does, so if you want to learn more, you should check out their [article about color blindness](#).

## Dichromacy



**Original Color**  
14993360

**Protanopia**  
13749716

**Deuteranopia**  
14862544



**Tritanopia**  
15058646

# Trichromacy



**Original Color**  
14993360

**Protanomaly**  
14207955

**Deuteranomaly**  
14928080

**Tritanomaly**  
15058644

# Monochromacy



**Original Color**  
14993360

**Achromatopsia**  
13750737

**Achromatomaly**  
14208465

# CSS Examples

## Text

The CSS property to change the color of the text to Decimal 14993360 is called "color". The color property can be set on classes, ids or directly on the HTML element.

This example shows how text in the color #E4C7D0 looks like.

```
.text, #text, p{  
  color:#E4C7D0  
}
```

If you want to add a text shadow in that color use the text-shadow property, you can generate a text shadow directly with our [CSS Text Shadow Generator](#).

Here you see how black text with a 4 pixel #E4C7D0 colored shadow looks like.

```
.shadow{ text-shadow: 4px 4px 2px #E4C7D0
}
```

## Border

The CSS property to change the border of an element to Decimal 14993360 is called "border". The border property can be set on classes, ids or directly on the HTML element.

This example shows the color as border, it can be applied via the CSS property "border" or "border-color".

```
.border, #border, table{ border:4px solid
#E4C7D0 }
```

If only the border color should be changed use the property `border-color`.

```
.border{ border-color:#E4C7D0 }
```

If you want to add a box shadow in that color use:

Here you see how a box with a 4 pixel #E4C7D0 colored shadow looks like.

```
.boxshadow{ -moz-box-shadow:4px 4px 4px  
4px #E4C7D0; -webkit-box-shadow:4px 4px  
4px 4px #E4C7D0; box-shadow:4px 4px 4px  
4px #E4C7D0 }
```

# Background

The CSS property to change the background color of an element to Decimal 14993360 is called "background". The background property can be set on classes, ids or directly on the HTML element.

```
.background, #background, body{  
background:#E4C7D0 }
```

If only the background color should be changed can be used:

```
.background{ background-color:#E4C7D0 }
```

This example shows the color as background, it is applied via the CSS property "background".

To optimize and compress your CSS code, you can use our [online CSS compressor and optimizer](#) based on csstidy. If you want to create a linear or radial gradient as background or border, check our [CSS Gradient Generator](#).



Hey! You found this booklet interesting? Support Converting Colors with the new Membership Option!

The pro membership hides all ads, plus gives you double the colors in the color bucket, and more awesome pro features!

**[Learn more, Memberships starting at \\$2.50/m!](#)**

**Follow me  
on Twitter!**

@ConvertingColor