

# Converting Colors

Decimal(14994384)

Have a look what the booklet for  
Decimal(14994384) contains.

<b>Decimal(14994384)</b> .....	3
<i><b>Conversions</b></i> .....	4
<i><b>Details</b></i> .....	6
<i><b>Harmonies</b></i> .....	11
<i><b>Previews</b></i> .....	23
<i><b>Color Blindness Simulation</b></i> .....	26
<i><b>CSS Examples</b></i> .....	29

# **Color**

**Decimal(14994384)**

# Conversions

## Conversions Part 1

Format	Color
Hex	E4CBD0
RGB	228, 203, 208
RGB Percent	89%, 80%, 82%
CMY	0.1059, 0.2039, 0.1843
CMYK	0.00, 0.11, 0.09, 0.11
HSL	348°, 32%, 85%
HSV	348°, 11%, 89%
XYZ	64.7360, 63.7599, 68.5694
YIQ	211.0450, 13.2950, 6.8550

# Conversions

## Conversions Part 2

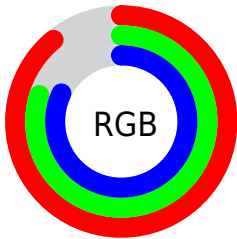
<b>Format</b>	<b>Color</b>
<b>R<sub>YB</sub></b>	228, 203, 208
Decimal	14994384
CIE <sub>Lab</sub>	83.84, 9.57, 0.71
CIE <sub>LCh</sub>	84, 9.598, 4.236
Yxy	63.7599, 0.3285, 0.3235
Android (android.graphics.Color)	4293184464 (0xFFE4CBD0)
YUV	211.0450, -1.5012, 14.8695
Hunter-Lab	79.8498, 4.9767, 4.9807

# Details

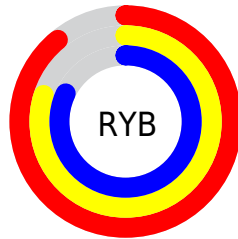
The Decimal color **14994384** is a light color, and the websafe version is hex **CCCCCC**. A complement of this color would be **13362399**, and the grayscale version is **13882323**.

A 20% lighter version of the original color is **16777215**, and **11310490** is the 20% darker color. If you saturate the color by 10%, you get **14988478**, and if you desaturate by 10%, it is **15000290**.

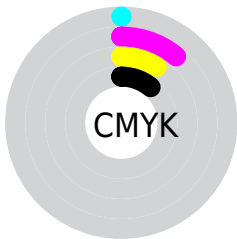
# Distribution



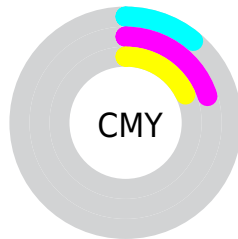
- Red (89%)
- Green (80%)
- Blue (82%)



- Red (89%)
- Yellow (80%)
- Blue (82%)



- Cyan (0%)
- Magenta (11%)
- Yellow (9%)
- Black (11%)



- Cyan (11%)
- Magenta (20%)
- Yellow (18%)

# Brightness & Saturation Gradients

These gradients show how the Decimal color 14994384 changes by changing the brightness by 10 percent. The first figure shows a shift by +10% for each color and the second figure -10%.

Similar to the brightness gradients but the following saturation gradients show a change of the Decimal color 14994384 by changing the saturation by 10% instead.



14994384

14994384

16777215

13152436

11310490

9599872

7889511

6244943

4666424

3153443

1902093

0

 14994384

 14994384

 14988478

 15000290

 14982572

 15006196

 14976921

 15007743

 14971015

 14965109

 14959203

 14953296

 14947646

 14942254

# Harmonies

## Analogous

The Analogous color harmony consists of three colors that are next to each other on the color wheel.



14601433



14994384



15060167

# Triad

The Triadic color harmony groups three colors that are evenly spaced from another and form a triangle on the color wheel.



14994384



13489346



12637409

# Complementary

The Complementary color scheme is a pair of colors which are on the opposite of each other on the color wheel.



14994384



13362399

# Split Complementary

Split-complementary colors differ from the complementary color scheme. The scheme consists of three colors, the original color and two neighbors of the complement color.



12310235



14994384



12834505

# Square

The Square scheme is like the rectangle color scheme, but the four colors are evenly spaced on the color wheel.



14994384



14143935



12376018



13226467

# Rectangle

The Rectangle color scheme consists of four colors that form a rectangle on the color wheel.



14994384



14863811



12376018



12506591



# Sweetspot

The Sweet Spot groups the original color and five complimentary colors.



14994384



16775161



14666724



8419963



0



8421504



# Same Dimension

The Same Dimension uses a secret algorithm to generate beautiful new colors.



14994384



16768740



14996427



7563114



11730980



3342346



# Inverse Universe

The Inverse Universe completely reimagines the original color for something new.



14994384



16768740



13360612



7563114



11730980

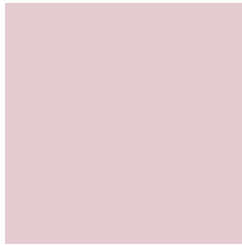


3342346



# Previews

## White Background



This preview shows how the Decimal color 14994384 looks on a white background.

## Color Contrast Check

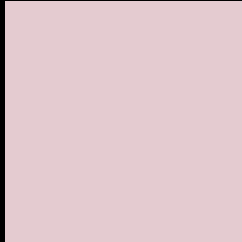
Large Text (above 18pt) WCAG AA × Fail

Any Text WCAG AA × Fail

Large Text (above 18pt) WCAG AAA × Fail

Any Text WCAG AAA × Fail

# Black Background



This preview shows how the Decimal color 14994384 looks on a black background.

## Color Contrast Check

Large Text (above 18pt) WCAG AA ✓ Pass

Any Text WCAG AA ✓ Pass

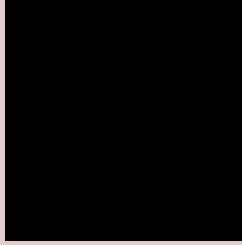
Large Text (above 18pt) WCAG AAA ✓ Pass

Any Text WCAG AAA ✓ Pass

If you want to check with other color combinations, try the [Color Contrast Checker](#).



## Decimal 14994384 Background



This preview shows how black text looks on a background with the Decimal color 14994384.

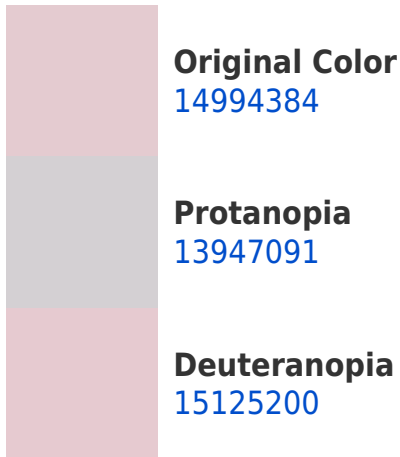



This preview shows how white text looks on a background with the Decimal color 14994384.

# Color Blindness Simulation

Color vision deficiency is a very complex topic, and I could not describe the different causes any better than Wikipedia does, so if you want to learn more, you should check out their [article about color blindness](#).

## Dichromacy





**Tritanopia**  
15059673

# Trichromacy



**Original Color**  
14994384

**Protanomaly**  
14339794

**Deuteranomaly**  
15059664

**Tritanomaly**  
15059670

# Monochromacy



**Original Color**  
14994384

**Achromatopsia**  
13882323

**Achromatomaly**  
14274770

# CSS Examples

## Text

The CSS property to change the color of the text to Decimal 14994384 is called "color". The color property can be set on classes, ids or directly on the HTML element.

This example shows how text in the color #E4CBD0 looks like.

```
.text, #text, p{  
    color:#E4CBD0  
}
```

If you want to add a text shadow in that color use the text-shadow property, you can generate a text shadow directly with our [CSS Text Shadow Generator](#).

Here you see how black text with a 4 pixel #E4CBD0 colored shadow looks like.

```
.shadow{ text-shadow: 4px 4px 2px #E4CBD0  
}
```

## Border

The CSS property to change the border of an element to Decimal 14994384 is called "border". The border property can be set on classes, ids or directly on the HTML element.

This example shows the color as border, it can be applied via the CSS property "border" or "border-color".

```
.border, #border, table{ border:4px solid  
#E4CBD0 }
```

If only the border color should be changed use the property `border-color`.

```
.border{ border-color:#E4CBD0 }
```

If you want to add a box shadow in that color use:

Here you see how a box with a 4 pixel #E4CBD0 colored shadow looks like.

```
.boxshadow{ -moz-box-shadow:4px 4px 4px  
4px #E4CBD0; -webkit-box-shadow:4px 4px  
4px 4px #E4CBD0; box-shadow:4px 4px 4px  
4px #E4CBD0 }
```

# Background

The CSS property to change the background color of an element to Decimal 14994384 is called "background". The background property can be set on classes, ids or directly on the HTML element.

```
.background, #background, body{  
background:#E4CBD0 }
```

If only the background color should be changed can be used:

```
.background{ background-color:#E4CBD0 }
```

This example shows the color as background, it is applied via the CSS property "background".

To optimize and compress your CSS code, you can use our [online CSS compressor and optimizer](#) based on csstidy. If you want to create a linear or radial gradient as background or border, check our [CSS Gradient Generator](#).



Hey! You found this booklet interesting? Support Converting Colors with the new Membership Option!

The pro membership hides all ads, plus gives you double the colors in the color bucket, and more awesome pro features!

**[Learn more, Memberships starting at \\$2.50/m!](#)**

**Follow me  
on Twitter!**

@ConvertingColor