

# Converting Colors

Decimal(15013722)

Have a look what the booklet for  
Decimal(15013722) contains.

<b>Decimal(15013722)</b> .....	3
<i><b>Conversions</b></i> .....	4
<i><b>Details</b></i> .....	6
<i><b>Harmonies</b></i> .....	11
<i><b>Previews</b></i> .....	23
<i><b>Color Blindness Simulation</b></i> .....	26
<i><b>CSS Examples</b></i> .....	29

# Color

**Decimal(15013722)**

# Conversions

## Conversions Part 1

<b>Format</b>	<b>Color</b>
Hex	E5175A
RGB	229, 23, 90
RGB Percent	90%, 9%, 35%
CMY	0.1020, 0.9098, 0.6471
CMYK	0.00, 0.90, 0.61, 0.10
HSL	340°, 82%, 49%
HSV	340°, 90%, 90%
XYZ	34.4650, 18.0090, 11.3324
YIQ	92.2320, 101.2690, 64.5090

# Conversions

## Conversions Part 2

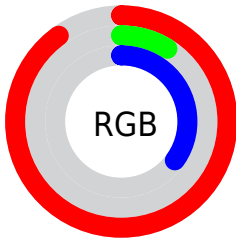
<b>Format</b>	<b>Color</b>
<b>R<sub>YB</sub></b>	229, 23, 90
Decimal	15013722
CIE <sub>Lab</sub>	49.51, 74.19, 18.87
CIE <sub>LCh</sub>	50, 76.550, 14.268
Yxy	18.0090, 0.5401, 0.2822
Android (android.graphics.Color)	4293203802 (0xFFE5175A)
YUV	92.2320, -1.1004, 119.9455
Hunter-Lab	42.4370, 70.7030, 13.8730

# Details

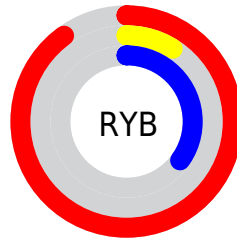
The Decimal color **15013722** is a dark color, and the websafe version is hex **FF3366**. The color can be described as dark washed red. A complement of this color would be **1566114**, and the grayscale version is **6052956**.

A 20% lighter version of the original color is **16737164**, and **10879021** is the 20% darker color. If you saturate the color by 10%, you get **15007819**, and if you desaturate by 10%, it is **15019625**.

# Distribution



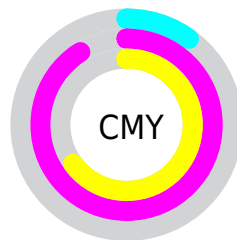
- Red (90%)
- Green (9%)
- Blue (35%)



- Red (90%)
- Yellow (9%)
- Blue (35%)



- Cyan (0%)
- Magenta (90%)
- Yellow (61%)
- Black (10%)



- Cyan (10%)
- Magenta (91%)
- Yellow (65%)

# Brightness & Saturation Gradients

These gradients show how the Decimal color 15013722 changes by changing the brightness by 10 percent. The first figure shows a shift by +10% for each color and the second figure -10%.

Similar to the brightness gradients but the following saturation gradients show a change of the Decimal color 15013722 by changing the saturation by 10% instead.



 15013722

 15013722

16777215

 12910659

 16737164

 10879021

 16744870

 8781850

 16752577

 6815746

 16760029

 4849668

 16767737

 2752513

 16775679

 0

 15013722

 15013722

 15007819

 15019625

■ 15007818

■ 15025529

■ 15031432

■ 15037336

■ 15043239

■ 15048887

■ 15054790

■ 15060694

■ 15066597

# Harmonies

## Analogous

The Analogous color harmony consists of three colors that are next to each other on the color wheel.



14034331



15013722



13845273

# Triad

The Triadic color harmony groups three colors that are evenly spaced from another and form a triangle on the color wheel.



15013722



1149184



34804

# Complementary

The Complementary color scheme is a pair of colors which are on the opposite of each other on the color wheel.



15013722



1566114

# Split Complementary

Split-complementary colors differ from the complementary color scheme. The scheme consists of three colors, the original color and two neighbors of the complement color.



37072



15013722



36688

# Square

The Square scheme is like the rectangle color scheme, but the four colors are evenly spaced on the color wheel.



15013722



7568640



37268



29942

# Rectangle

The Rectangle color scheme consists of four colors that form a rectangle on the color wheel.



15013722



12213248



37268



35820



# Sweetspot

The Sweet Spot groups the original color and five complimentary colors.



15013722



16759505



10491877



8410980



0



8421504



# Same Dimension

The Same Dimension uses a secret algorithm to generate beautiful new colors.



15013722



16711763



15022359



7563115



11731002



3342353



# Inverse Universe

The Inverse Universe completely reimagines the original color for something new.



15013722



16711763



1557477



7563115



11731002

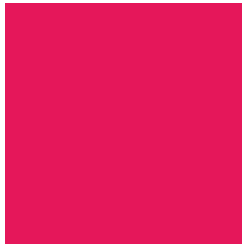


3342353



# Previews

## White Background



This preview shows how the Decimal color 15013722 looks on a white background.

## Color Contrast Check

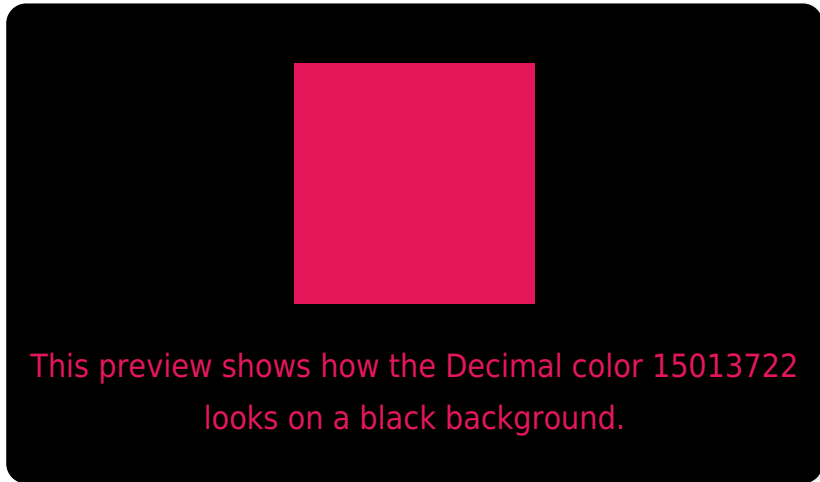
Large Text (above 18pt) WCAG AA ✓ Pass

Any Text WCAG AA ✓ Pass

Large Text (above 18pt) WCAG AAA ✓ Pass

Any Text WCAG AAA × Fail

# Black Background



## Color Contrast Check

Large Text (above 18pt) WCAG AA ✓ Pass

Any Text WCAG AA ✓ Pass

Large Text (above 18pt) WCAG AAA ✓ Pass

Any Text WCAG AAA × Fail

If you want to check with other color combinations, try the [Color Contrast Checker](#).



## Decimal 15013722 Background



This preview shows how black text looks on a background with the Decimal color 15013722.

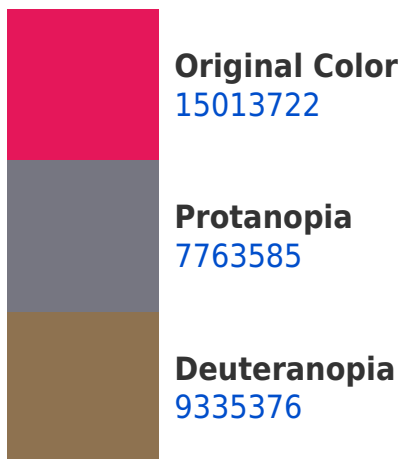


This preview shows how white text looks on a background with the Decimal color 15013722.

# Color Blindness Simulation

Color vision deficiency is a very complex topic, and I could not describe the different causes any better than Wikipedia does, so if you want to learn more, you should check out their [article about color blindness](#).

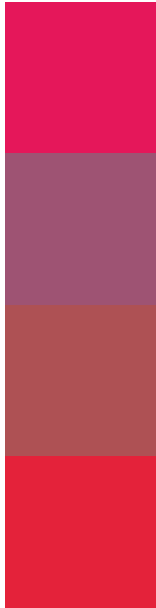
## Dichromacy





**Tritanopia**  
14887208

# Trichromacy



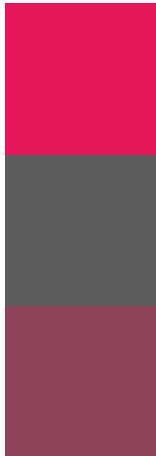
**Original Color**  
15013722

**Protanomaly**  
10376051

**Deuteranomaly**  
11424084

**Tritanomaly**  
14950970

# Monochromacy



**Original Color**  
15013722

**Achromatopsia**  
6052956

**Achromatomaly**  
9323355

# CSS Examples

## Text

The CSS property to change the color of the text to Decimal 15013722 is called "color". The color property can be set on classes, ids or directly on the HTML element.

This example shows how text in the color #E5175A looks like.

```
.text, #text, p{  
    color:#E5175A  
}
```

If you want to add a text shadow in that color use the text-shadow property, you can generate a text shadow directly with our [CSS Text Shadow Generator](#).

Here you see how black text with a 4 pixel #E5175A colored shadow looks like.

```
.shadow{ text-shadow: 4px 4px 2px #E5175A
}
```

## Border

The CSS property to change the border of an element to Decimal 15013722 is called "border". The border property can be set on classes, ids or directly on the HTML element.

This example shows the color as border, it can be applied via the CSS property "border" or "border-color".

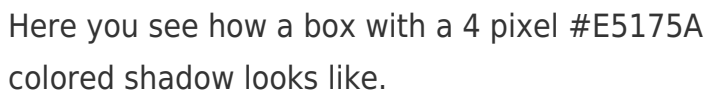
```
.border, #border, table{ border:4px solid
#E5175A }
```

If only the border color should be changed use the property `border-color`.

```
.border{ border-color:#E5175A }
```

If you want to add a box shadow in that color use:

Here you see how a box with a 4 pixel #E5175A colored shadow looks like.

A rectangular box with a thick red border and a red shadow. The shadow is cast to the right and bottom of the box, creating a 3D effect. The text inside the box is black and describes the shadow's appearance.

```
.boxshadow{ -moz-box-shadow:4px 4px 4px  
4px #E5175A; -webkit-box-shadow:4px 4px  
4px 4px #E5175A; box-shadow:4px 4px 4px  
4px #E5175A }
```

# Background

The CSS property to change the background color of an element to Decimal 15013722 is called "background". The background property can be set on classes, ids or directly on the HTML element.

```
.background, #background, body{  
background:#E5175A }
```

If only the background color should be changed can be used:

```
.background{ background-color:#E5175A }
```

This example shows the color as background, it is applied via the CSS property "background".

To optimize and compress your CSS code, you can use our [online CSS compressor and optimizer](#) based on csstidy. If you want to create a linear or radial gradient as background or border, check our [CSS Gradient Generator](#).



Hey! You found this booklet interesting? Support Converting Colors with the new Membership Option!

The pro membership hides all ads, plus gives you double the colors in the color bucket, and more awesome pro features!

**[Learn more, Memberships starting at \\$2.50/m!](#)**

**Follow me  
on Twitter!**

@ConvertingColor