

# Converting Colors

Decimal(15027565)

Have a look what the booklet for  
Decimal(15027565) contains.

<b>Decimal(15027565)</b> .....	3
<i><b>Conversions</b></i> .....	4
<i><b>Details</b></i> .....	6
<i><b>Harmonies</b></i> .....	11
<i><b>Previews</b></i> .....	23
<i><b>Color Blindness Simulation</b></i> .....	26
<i><b>CSS Examples</b></i> .....	29

# Color

**Decimal(15027565)**

# Conversions

## Conversions Part 1

<b>Format</b>	<b>Color</b>
Hex	E54D6D
RGB	229, 77, 109
RGB Percent	90%, 30%, 43%
CMY	0.1020, 0.6980, 0.5725
CMYK	0.00, 0.66, 0.52, 0.10
HSL	347°, 75%, 60%
HSV	347°, 66%, 90%
XYZ	37.7273, 23.0699, 16.9325
YIQ	126.0960, 80.3200, 42.1760

# Conversions

## Conversions Part 2

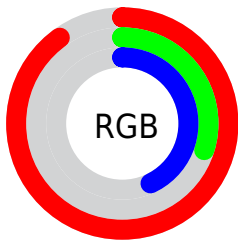
<b>Format</b>	<b>Color</b>
<b>R<sub>YB</sub></b>	229, 77, 109
Decimal	15027565
CIE <sub>Lab</sub>	55.14, 60.80, 15.11
CIE <sub>LCh</sub>	55, 62.652, 13.957
Yxy	23.0699, 0.4854, 0.2968
Android (android.graphics.Color)	4293217645 (0xFFE54D6D)
YUV	126.0960, -8.4283, 90.2468
Hunter-Lab	48.0311, 56.1530, 12.7202

# Details

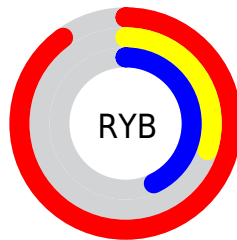
The Decimal color **15027565** is a dark color, and the websafe version is hex **CC3366**. The color can be described as middle muted rose. A complement of this color would be **5105093**, and the grayscale version is **8289918**.

A 20% lighter version of the original color is **16746144**, and **11010110** is the 20% darker color. If you saturate the color by 10%, you get **15021659**, and if you desaturate by 10%, it is **15033471**.

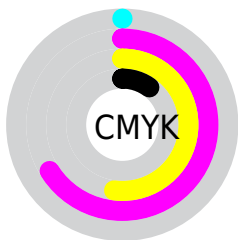
# Distribution



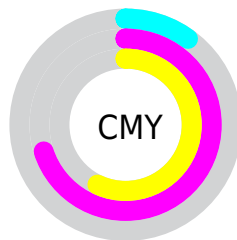
- Red (90%)
- Green (30%)
- Blue (43%)



- Red (90%)
- Yellow (30%)
- Blue (43%)



- Cyan (0%)
- Magenta (66%)
- Yellow (52%)
- Black (10%)



- Cyan (10%)
- Magenta (70%)
- Yellow (57%)

# Brightness & Saturation Gradients

These gradients show how the Decimal color 15027565 changes by changing the brightness by 10 percent. The first figure shows a shift by +10% for each color and the second figure -10%.

Similar to the brightness gradients but the following saturation gradients show a change of the Decimal color 15027565 by changing the saturation by 10% instead.




 15027565  15027565

16777215  12987989

 16746144  11010110

 16753339  9044008

 16760791  7077909

 16768243  5177345

 16775935  3276802

 0

 15027565  15027565

 15021659  15033471

 15015753

 15039377

 15009847

 15045283

 15007792

 15051189

 15056839

 15062745

 15068652

 15073278

 15073279

# Harmonies

## Analogous

The Analogous color harmony consists of three colors that are next to each other on the color wheel.



14045859



15027565



14180154

# Triad

The Triadic color harmony groups three colors that are evenly spaced from another and form a triangle on the color wheel.



15027565



4691246



37613

# Complementary

The Complementary color scheme is a pair of colors which are on the opposite of each other on the color wheel.



15027565



5105093

# Split Complementary

Split-complementary colors differ from the complementary color scheme. The scheme consists of three colors, the original color and two neighbors of the complement color.



39886



15027565



39780

# Square

The Square scheme is like the rectangle color scheme, but the four colors are evenly spaced on the color wheel.



15027565



8816896



40349



4031214

# Rectangle

The Rectangle color scheme consists of four colors that form a rectangle on the color wheel.



15027565



12807963



40349



38629



# Sweetspot

The Sweet Spot groups the original color and five complimentary colors.



15027565



16764119



12864997



8413543



0



8421504



# Same Dimension

The Same Dimension uses a secret algorithm to generate beautiful new colors.



15027565



16724830



15038541



7563114



11730982



3342347



# Inverse Universe

The Inverse Universe completely reimagines the original color for something new.



15027565



16724830



5094117



7563114



11730982



3342347



# Previews

## White Background



This preview shows how the Decimal color 15027565 looks on a white background.

## Color Contrast Check

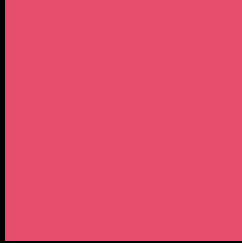
Large Text (above 18pt) WCAG AA ✓ Pass

Any Text WCAG AA × Fail

Large Text (above 18pt) WCAG AAA × Fail

Any Text WCAG AAA × Fail

# Black Background



This preview shows how the Decimal color 15027565 looks on a black background.

## Color Contrast Check

Large Text (above 18pt) WCAG AA ✓ Pass

Any Text WCAG AA ✓ Pass

Large Text (above 18pt) WCAG AAA ✓ Pass

Any Text WCAG AAA × Fail

If you want to check with other color combinations, try the [Color Contrast Checker](#).



## Decimal 15027565 Background



This preview shows how black text looks on a background with the Decimal color 15027565.

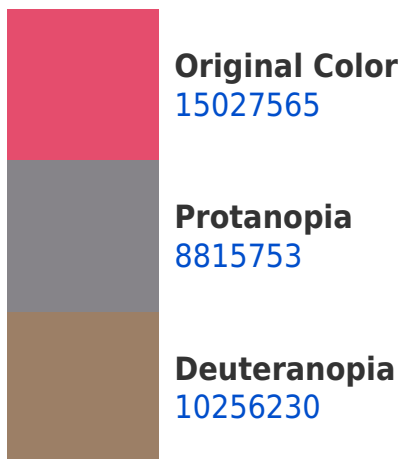



This preview shows how white text looks on a background with the Decimal color 15027565.

# Color Blindness Simulation

Color vision deficiency is a very complex topic, and I could not describe the different causes any better than Wikipedia does, so if you want to learn more, you should check out their [article about color blindness](#).

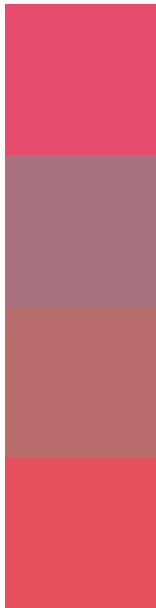
## Dichromacy





**Tritanopia**  
14963030

# Trichromacy



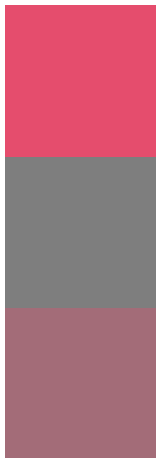
**Original Color**  
15027565

**Protanomaly**  
11104383

**Deuteranomaly**  
12021097

**Tritanomaly**  
14962782

# Monochromacy



**Original Color**  
15027565

**Achromatopsia**  
8289918

**Achromatomaly**  
10710136

# CSS Examples

## Text

The CSS property to change the color of the text to Decimal 15027565 is called "color". The color property can be set on classes, ids or directly on the HTML element.

This example shows how text in the color #E54D6D looks like.

```
.text, #text, p{  
    color:#E54D6D  
}
```

If you want to add a text shadow in that color use the text-shadow property, you can generate a text shadow directly with our [CSS Text Shadow Generator](#).

Here you see how black text with a 4 pixel #E54D6D colored shadow looks like.

```
.shadow{ text-shadow: 4px 4px 2px #E54D6D
}
```

## Border

The CSS property to change the border of an element to Decimal 15027565 is called "border". The border property can be set on classes, ids or directly on the HTML element.

This example shows the color as border, it can be applied via the CSS property "border" or "border-color".

```
.border, #border, table{ border:4px solid
#E54D6D }
```

If only the border color should be changed use the property `border-color`.

```
.border{ border-color:#E54D6D }
```

If you want to add a box shadow in that color use:

Here you see how a box with a 4 pixel #E54D6D colored shadow looks like.

```
.boxshadow{ -moz-box-shadow:4px 4px 4px  
4px #E54D6D; -webkit-box-shadow:4px 4px  
4px 4px #E54D6D; box-shadow:4px 4px 4px  
4px #E54D6D }
```

# Background

The CSS property to change the background color of an element to Decimal 15027565 is called "background". The background property can be set on classes, ids or directly on the HTML element.

```
.background, #background, body{  
background:#E54D6D }
```

If only the background color should be changed can be used:

```
.background{ background-color:#E54D6D }
```

This example shows the color as background, it is applied via the CSS property "background".

To optimize and compress your CSS code, you can use our [online CSS compressor and optimizer](#) based on csstidy. If you want to create a linear or radial gradient as background or border, check our [CSS Gradient Generator](#).



Hey! You found this booklet interesting? Support Converting Colors with the new Membership Option!

The pro membership hides all ads, plus gives you double the colors in the color bucket, and more awesome pro features!

**[Learn more, Memberships starting at \\$2.50/m!](#)**

**Follow me  
on Twitter!**

@ConvertingColor