

# Converting Colors

Decimal(15027571)

Have a look what the booklet for  
Decimal(15027571) contains.

<b>Decimal(15027571)</b> .....	3
<i><b>Conversions</b></i> .....	4
<i><b>Details</b></i> .....	6
<i><b>Harmonies</b></i> .....	11
<i><b>Previews</b></i> .....	23
<i><b>Color Blindness Simulation</b></i> .....	26
<i><b>CSS Examples</b></i> .....	29

# Color

**Decimal(15027571)**

# Conversions

## Conversions Part 1

<b>Format</b>	<b>Color</b>
Hex	E54D73
RGB	229, 77, 115
RGB Percent	90%, 30%, 45%
CMY	0.1020, 0.6980, 0.5490
CMYK	0.00, 0.66, 0.50, 0.10
HSL	345°, 75%, 60%
HSV	345°, 66%, 90%
XYZ	38.0615, 23.2036, 18.6923
YIQ	126.7800, 78.3940, 44.0420

# Conversions

## Conversions Part 2

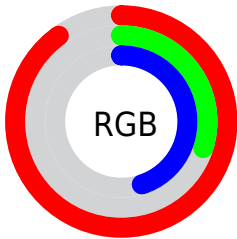
<b>Format</b>	<b>Color</b>
<b>R<sub>YB</sub></b>	229, 77, 115
Decimal	15027571
CIE <sub>Lab</sub>	55.28, 61.29, 11.74
CIE <sub>LCh</sub>	55, 62.408, 10.846
Yxy	23.2036, 0.4760, 0.2902
Android (android.graphics.Color)	4293217651 (0xFFE54D73)
YUV	126.7800, -5.8075, 89.6469
Hunter-Lab	48.1701, 56.7437, 10.7117

# Details

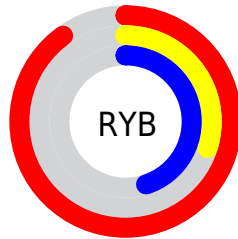
The Decimal color **15027571** is a dark color, and the websafe version is hex **CC3366**. The color can be described as middle muted rose. A complement of this color would be **5105087**, and the grayscale version is **8355711**.

A 20% lighter version of the original color is **16746151**, and **11010115** is the 20% darker color. If you saturate the color by 10%, you get **15021666**, and if you desaturate by 10%, it is **15033476**.

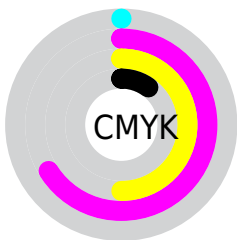
# Distribution



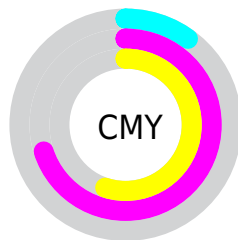
- Red (90%)
- Green (30%)
- Blue (45%)



- Red (90%)
- Yellow (30%)
- Blue (45%)



- Cyan (0%)
- Magenta (66%)
- Yellow (50%)
- Black (10%)



- Cyan (10%)
- Magenta (70%)
- Yellow (55%)

# Brightness & Saturation Gradients

These gradients show how the Decimal color 15027571 changes by changing the brightness by 10 percent. The first figure shows a shift by +10% for each color and the second figure -10%.

Similar to the brightness gradients but the following saturation gradients show a change of the Decimal color 15027571 by changing the saturation by 10% instead.



 15027571

 15027571

16777215

 12987995

 16746151

 11010115

 16753602

 9044014

 16760798

 7077913

 16768506

 5242881

 16775935

 3342338

 0

 15027571

 15027571

 15021666

 15033476

 15015761

 15039381

 15009855

 15045287

 15007801

 15051192

 15056841

 15062746

 15068651

 15073276

 15073279

# Harmonies

## Analogous

The Analogous color harmony consists of three colors that are next to each other on the color wheel.



13850025



15027571



14310720

# Triad

The Triadic color harmony groups three colors that are evenly spaced from another and form a triangle on the color wheel.



15027571



5281066



38123

# Complementary

The Complementary color scheme is a pair of colors which are on the opposite of each other on the color wheel.



15027571



5105087

# Split Complementary

Split-complementary colors differ from the complementary color scheme. The scheme consists of three colors, the original color and two neighbors of the complement color.



40138



15027571



39775

# Square

The Square scheme is like the rectangle color scheme, but the four colors are evenly spaced on the color wheel.



15027571



9209856



40343



2524399

# Rectangle

The Rectangle color scheme consists of four colors that form a rectangle on the color wheel.



15027571



13069601



40343



38883



# Sweetspot

The Sweet Spot groups the original color and five complimentary colors.



15027571



16764121



12537317



8413545



0



8421504



# Same Dimension

The Same Dimension uses a secret algorithm to generate beautiful new colors.



15027571



16724838



15037261



7563114



11730989



3342349



# Inverse Universe

The Inverse Universe completely reimagines the original color for something new.



15027571



16724838



5095397



7563114



11730989



3342349



# Previews

## White Background



This preview shows how the Decimal color 15027571 looks on a white background.

## Color Contrast Check

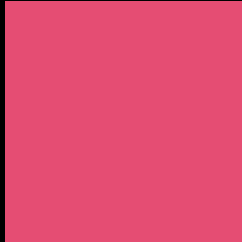
Large Text (above 18pt) WCAG AA ✓ Pass

Any Text WCAG AA × Fail

Large Text (above 18pt) WCAG AAA × Fail

Any Text WCAG AAA × Fail

# Black Background



This preview shows how the Decimal color 15027571 looks on a black background.

## Color Contrast Check

Large Text (above 18pt) WCAG AA ✓ Pass

Any Text WCAG AA ✓ Pass

Large Text (above 18pt) WCAG AAA ✓ Pass

Any Text WCAG AAA × Fail

If you want to check with other color combinations, try the [Color Contrast Checker](#).



## Decimal 15027571 Background



This preview shows how black text looks on a background with the Decimal color 15027571.




This preview shows how white text looks on a background with the Decimal color 15027571.

# Color Blindness Simulation

Color vision deficiency is a very complex topic, and I could not describe the different causes any better than Wikipedia does, so if you want to learn more, you should check out their [article about color blindness](#).

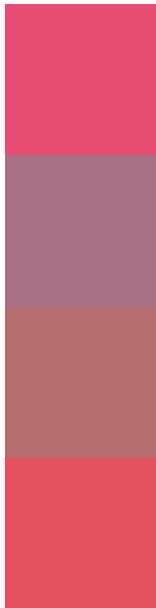
## Dichromacy





**Tritanopia**  
14898007

# Trichromacy



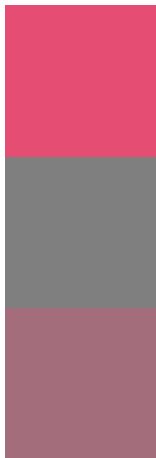
**Original Color**  
15027571

**Protanomaly**  
10973317

**Deuteranomaly**  
11890031

**Tritanomaly**  
14963041

# Monochromacy



**Original Color**  
15027571

**Achromatopsia**  
8355711

**Achromatomaly**  
10775931

# CSS Examples

## Text

The CSS property to change the color of the text to Decimal 15027571 is called "color". The color property can be set on classes, ids or directly on the HTML element.

This example shows how text in the color #E54D73 looks like.

```
.text, #text, p{  
    color:#E54D73  
}
```

If you want to add a text shadow in that color use the text-shadow property, you can generate a text shadow directly with our [CSS Text Shadow Generator](#).

Here you see how black text with a 4 pixel #E54D73 colored shadow looks like.

```
.shadow{ text-shadow: 4px 4px 2px #E54D73
}
```

## Border

The CSS property to change the border of an element to Decimal 15027571 is called "border". The border property can be set on classes, ids or directly on the HTML element.

This example shows the color as border, it can be applied via the CSS property "border" or "border-color".

```
.border, #border, table{ border:4px solid
#E54D73 }
```

If only the border color should be changed use the property `border-color`.

```
.border{ border-color:#E54D73 }
```

If you want to add a box shadow in that color use:

Here you see how a box with a 4 pixel #E54D73 colored shadow looks like.

```
.boxshadow{ -moz-box-shadow:4px 4px 4px  
4px #E54D73; -webkit-box-shadow:4px 4px  
4px 4px #E54D73; box-shadow:4px 4px 4px  
4px #E54D73 }
```

# Background

The CSS property to change the background color of an element to Decimal 15027571 is called "background". The background property can be set on classes, ids or directly on the HTML element.

```
.background, #background, body{  
background:#E54D73 }
```

If only the background color should be changed can be used:

```
.background{ background-color:#E54D73 }
```

This example shows the color as background, it is applied via the CSS property "background".

To optimize and compress your CSS code, you can use our [online CSS compressor and optimizer](#) based on csstidy. If you want to create a linear or radial gradient as background or border, check our [CSS Gradient Generator](#).



Hey! You found this booklet interesting? Support Converting Colors with the new Membership Option!

The pro membership hides all ads, plus gives you double the colors in the color bucket, and more awesome pro features!

**[Learn more, Memberships starting at \\$2.50/m!](#)**

**Follow me  
on Twitter!**

@ConvertingColor