

# Converting Colors

Decimal(15037342)

Have a look what the booklet for  
Decimal(15037342) contains.

<b>Decimal(15037342)</b> .....	3
<i><b>Conversions</b></i> .....	4
<i><b>Details</b></i> .....	6
<i><b>Harmonies</b></i> .....	11
<i><b>Previews</b></i> .....	23
<i><b>Color Blindness Simulation</b></i> .....	26
<i><b>CSS Examples</b></i> .....	29

# **Color**

**Decimal(15037342)**

# Conversions

## Conversions Part 1

<b>Format</b>	<b>Color</b>
Hex	E5739E
RGB	229, 115, 158
RGB Percent	90%, 45%, 62%
CMY	0.1020, 0.5490, 0.3804
CMYK	0.00, 0.50, 0.31, 0.10
HSL	337°, 69%, 67%
HSV	337°, 50%, 90%
XYZ	44.6154, 31.3881, 36.0548
YIQ	153.9880, 54.1410, 37.5410

# Conversions

## Conversions Part 2

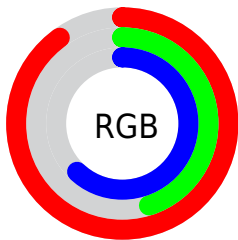
<b>Format</b>	<b>Color</b>
R <sub>YB</sub>	229, 115, 158
Decimal	15037342
CIE Lab	62.83, 48.78, -2.45
CIE LCh	63, 48.844, 357.130
Yxy	31.3881, 0.3981, 0.2801
Android (android.graphics.Color)	4293227422 (0xFFE5739E)
YUV	153.9880, 1.9779, 65.7855
Hunter-Lab	56.0251, 44.1040, 1.0617

# Details

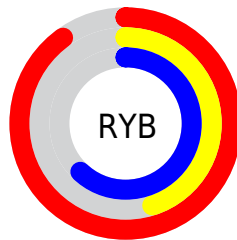
The Decimal color **15037342** is a light color, and the websafe version is hex **CC6699**. A complement of this color would be **7595450**, and the grayscale version is **10132122**.

A 20% lighter version of the original color is **16755413**, and **11222379** is the 20% darker color. If you saturate the color by 10%, you get **15031440**, and if you desaturate by 10%, it is **15043244**.

# Distribution



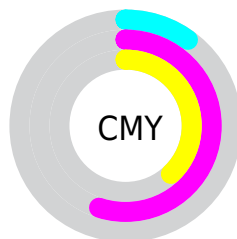
- Red (90%)
- Green (45%)
- Blue (62%)



- Red (90%)
- Yellow (45%)
- Blue (62%)



- Cyan (0%)
- Magenta (50%)
- Yellow (31%)
- Black (10%)



- Cyan (10%)
- Magenta (55%)
- Yellow (38%)

# Brightness & Saturation Gradients

These gradients show how the Decimal color 15037342 changes by changing the brightness by 10 percent. The first figure shows a shift by +10% for each color and the second figure -10%.

Similar to the brightness gradients but the following saturation gradients show a change of the Decimal color 15037342 by changing the saturation by 10% instead.



 15037342

 15037342

16777215

 13064324

 16755413

 11222379

 16762609

 9314643

 16770047

 7471164

 5701670

 3997713

 2097153

 0

 15037342

 15037342

■ 15031440

■ 15043244

■ 15025537

■ 15049147

■ 15019635

■ 15055049

■ 15013733

■ 15060951

■ 15007831

■ 15066853

■ 15007830

■ 15072500

■ 15073279

# Harmonies

## Analogous

The Analogous color harmony consists of three colors that are next to each other on the color wheel.



13270472



15037342



15234675

# Triad

The Triadic color harmony groups three colors that are evenly spaced from another and form a triangle on the color wheel.



15037342



9085255



43232

# Complementary

The Complementary color scheme is a pair of colors which are on the opposite of each other on the color wheel.



15037342



7595450

# Split Complementary

Split-complementary colors differ from the complementary color scheme. The scheme consists of three colors, the original color and two neighbors of the complement color.



44478



15037342



5483111

# Square

The Square scheme is like the rectangle color scheme, but the four colors are evenly spaced on the color wheel.



15037342



11899966



44690



3514094

# Rectangle

The Rectangle color scheme consists of four colors that form a rectangle on the color wheel.



15037342



14581594



44690



43991

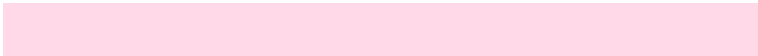


# Sweetspot

The Sweet Spot groups the original color and five complimentary colors.



15037342



16767463



12153829



8415601



0



8421504



# Same Dimension

The Same Dimension uses a secret algorithm to generate beautiful new colors.



15037342



16737952



15040627



7563116



11731011



3342355



# Inverse Universe

The Inverse Universe completely reimagines the original color for something new.



15037342



16737952



7592165



7563116



11731011



3342355



# Previews

## White Background



This preview shows how the Decimal color 15037342 looks on a white background.

## Color Contrast Check

Large Text (above 18pt) WCAG AA × Fail

Any Text WCAG AA × Fail

Large Text (above 18pt) WCAG AAA × Fail

Any Text WCAG AAA × Fail

# Black Background



This preview shows how the Decimal color 15037342 looks on a black background.

## Color Contrast Check

Large Text (above 18pt) WCAG AA ✓ Pass

Any Text WCAG AA ✓ Pass

Large Text (above 18pt) WCAG AAA ✓ Pass

Any Text WCAG AAA ✓ Pass

If you want to check with other color combinations, try the [Color Contrast Checker](#).



## Decimal 15037342 Background



This preview shows how black text looks on a background with the Decimal color 15037342.



This preview shows how white text looks on a background with the Decimal color 15037342.

# Color Blindness Simulation

Color vision deficiency is a very complex topic, and I could not describe the different causes any better than Wikipedia does, so if you want to learn more, you should check out their [article about color blindness](#).

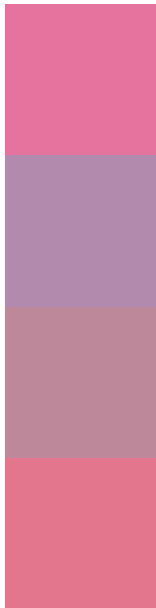
## Dichromacy





**Tritanopia**  
14841985

# Trichromacy



**Original Color**  
15037342

**Protanomaly**  
11635373

**Deuteranomaly**  
12486811

**Tritanomaly**  
14907020

# Monochromacy



**Original Color**  
15037342

**Achromatopsia**  
10132122

**Achromatomaly**  
11898011

# CSS Examples

## Text

The CSS property to change the color of the text to Decimal 15037342 is called "color". The color property can be set on classes, ids or directly on the HTML element.

This example shows how text in the color #E5739E looks like.

```
.text, #text, p{  
    color:#E5739E  
}
```

If you want to add a text shadow in that color use the text-shadow property, you can generate a text shadow directly with our [CSS Text Shadow Generator](#).

Here you see how black text with a 4 pixel #E5739E colored shadow looks like.

```
.shadow{ text-shadow: 4px 4px 2px #E5739E
}
```

## Border

The CSS property to change the border of an element to Decimal 15037342 is called "border". The border property can be set on classes, ids or directly on the HTML element.

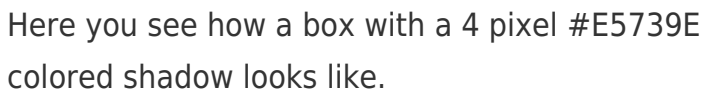
This example shows the color as border, it can be applied via the CSS property "border" or "border-color".

```
.border, #border, table{ border:4px solid
#E5739E }
```

If only the border color should be changed use the property `border-color`.

```
.border{ border-color:#E5739E }
```

If you want to add a box shadow in that color use:



Here you see how a box with a 4 pixel #E5739E colored shadow looks like.

```
.boxshadow{ -moz-box-shadow:4px 4px 4px  
4px #E5739E; -webkit-box-shadow:4px 4px  
4px 4px #E5739E; box-shadow:4px 4px 4px  
4px #E5739E }
```

# Background

The CSS property to change the background color of an element to Decimal 15037342 is called "background". The background property can be set on classes, ids or directly on the HTML element.

```
.background, #background, body{  
background:#E5739E }
```

If only the background color should be changed can be used:

```
.background{ background-color:#E5739E }
```

This example shows the color as background, it is applied via the CSS property "background".

To optimize and compress your CSS code, you can use our [online CSS compressor and optimizer](#) based on csstidy. If you want to create a linear or radial gradient as background or border, check our [CSS Gradient Generator](#).



Hey! You found this booklet interesting? Support Converting Colors with the new Membership Option!

The pro membership hides all ads, plus gives you double the colors in the color bucket, and more awesome pro features!

**[Learn more, Memberships starting at \\$2.50/m!](#)**

**Follow me  
on Twitter!**

@ConvertingColor