

Converting Colors

Decimal(15038120)

Have a look what the booklet for
Decimal(15038120) contains.

Decimal(15038120)	3
<i>Conversions</i>	4
<i>Details</i>	6
<i>Harmonies</i>	11
<i>Previews</i>	23
<i>Color Blindness Simulation</i>	26
<i>CSS Examples</i>	29

Color

Decimal(15038120)

Conversions

Conversions Part 1

Format	Color
Hex	E576A8
RGB	229, 118, 168
RGB Percent	90%, 46%, 66%
CMY	0.1020, 0.5373, 0.3412
CMYK	0.00, 0.48, 0.27, 0.10
HSL	333°, 68%, 68%
HSV	333°, 48%, 90%
XYZ	45.8594, 32.4420, 40.8907
YIQ	156.8890, 50.1060, 39.0820

Conversions

Conversions Part 2

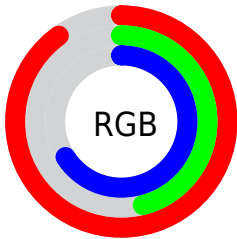
Format	Color
R _Y B	229, 118, 168
Decimal	15038120
CIE Lab	63.71, 48.60, -6.87
CIE LCh	64, 49.084, 351.954
Yxy	32.4420, 0.3848, 0.2722
Android (android.graphics.Color)	4293228200 (0xFFE576A8)
YUV	156.8890, 5.4777, 63.2413
Hunter-Lab	56.9579, 44.0422, -2.6944

Details

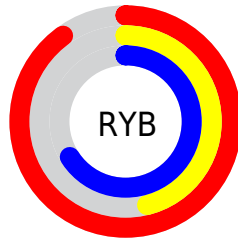
The Decimal color **15038120** is a light color, and the websafe version is hex **CC6699**. A complement of this color would be **7792051**, and the grayscale version is **10329501**.

A 20% lighter version of the original color is **16756191**, and **11223412** is the 20% darker color. If you saturate the color by 10%, you get **15032219**, and if you desaturate by 10%, it is **15044021**.

Distribution



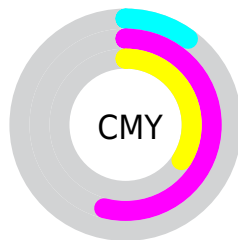
- Red (90%)
- Green (46%)
- Blue (66%)



- Red (90%)
- Yellow (46%)
- Blue (66%)



- Cyan (0%)
- Magenta (48%)
- Yellow (27%)
- Black (10%)



- Cyan (10%)
- Magenta (54%)
- Yellow (34%)

Brightness & Saturation Gradients

These gradients show how the Decimal color 15038120 changes by changing the brightness by 10 percent. The first figure shows a shift by +10% for each color and the second figure -10%.

Similar to the brightness gradients but the following saturation gradients show a change of the Decimal color 15038120 by changing the saturation by 10% instead.

 15038120

 15038120

16777215

 13130638

 16756191

 11223412

 16763388

 9381211

 16770815

 7536708

 5767214

 4063257

 2293761

 0

 15038120

 15038120

 15032219

 15044021

 15026319

 15049921

 15020418

 15055822

 15014518

 15061722

 15008617

 15067367

 15007847

 15073268

 15073279

Harmonies

Analogous

The Analogous color harmony consists of three colors that are next to each other on the color wheel.



12944081



15038120



15497084

Triad

The Triadic color harmony groups three colors that are evenly spaced from another and form a triangle on the color wheel.



15038120



9740869



44254

Complementary

The Complementary color scheme is a pair of colors which are on the opposite of each other on the color wheel.



15038120



7792051

Split Complementary

Split-complementary colors differ from the complementary color scheme. The scheme consists of three colors, the original color and two neighbors of the complement color.



45242



15038120



6335330

Square

The Square scheme is like the rectangle color scheme, but the four colors are evenly spaced on the color wheel.



15038120



12489793



45197



1024753

Rectangle

The Rectangle color scheme consists of four colors that form a rectangle on the color wheel.



15038120



14974818



45197



44756

Sweetspot

The Sweet Spot groups the original color and five complimentary colors.



15038120



16767466



11630309



8415603



0



8421504

Same Dimension

The Same Dimension uses a secret algorithm to generate beautiful new colors.



15038120



16739246



15039094



7563116



11731024



3342359

Inverse Universe

The Inverse Universe completely reimagines the original color for something new.



15038120



16739246



7791077



7563116



11731024



3342359

Previews

White Background



This preview shows how the Decimal color 15038120 looks on a white background.

Color Contrast Check

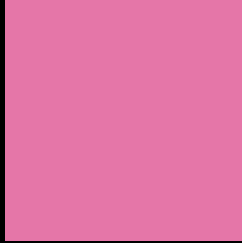
Large Text (above 18pt) WCAG AA × Fail

Any Text WCAG AA × Fail

Large Text (above 18pt) WCAG AAA × Fail

Any Text WCAG AAA × Fail

Black Background



This preview shows how the Decimal color 15038120 looks on a black background.

Color Contrast Check

Large Text (above 18pt) WCAG AA ✓ Pass

Any Text WCAG AA ✓ Pass

Large Text (above 18pt) WCAG AAA ✓ Pass

Any Text WCAG AAA ✓ Pass

If you want to check with other color combinations, try the [Color Contrast Checker](#).

Decimal 15038120 Background



This preview shows how black text looks on a background with the Decimal color 15038120.



This preview shows how white text looks on a background with the Decimal color 15038120.

Color Blindness Simulation

Color vision deficiency is a very complex topic, and I could not describe the different causes any better than Wikipedia does, so if you want to learn more, you should check out their [article about color blindness](#).

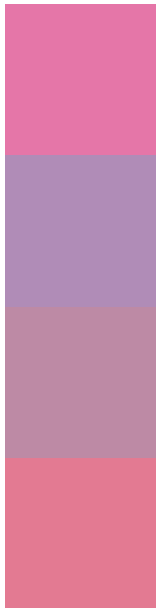
Dichromacy





Tritanopia
14843270

Trichromacy



Original Color
15038120

Protanomaly
11570359

Deuteranomaly
12421797

Tritanomaly
14908050

Monochromacy



Original Color
15038120

Achromatopsia
10329501

Achromatomaly
12029857

CSS Examples

Text

The CSS property to change the color of the text to Decimal 15038120 is called "color". The color property can be set on classes, ids or directly on the HTML element.

This example shows how text in the color #E576A8 looks like.

```
.text, #text, p{  
    color:#E576A8  
}
```

If you want to add a text shadow in that color use the text-shadow property, you can generate a text shadow directly with our [CSS Text Shadow Generator](#).

Here you see how black text with a 4 pixel #E576A8 colored shadow looks like.

```
.shadow{ text-shadow: 4px 4px 2px #E576A8
}
```

Border

The CSS property to change the border of an element to Decimal 15038120 is called "border". The border property can be set on classes, ids or directly on the HTML element.

This example shows the color as border, it can be applied via the CSS property "border" or "border-color".

```
.border, #border, table{ border:4px solid
#E576A8 }
```

If only the border color should be changed use the property `border-color`.

```
.border{ border-color:#E576A8 }
```

If you want to add a box shadow in that color use:

Here you see how a box with a 4 pixel #E576A8 colored shadow looks like.

```
.boxshadow{ -moz-box-shadow:4px 4px 4px  
4px #E576A8; -webkit-box-shadow:4px 4px  
4px 4px #E576A8; box-shadow:4px 4px 4px  
4px #E576A8 }
```

Background

The CSS property to change the background color of an element to Decimal 15038120 is called "background". The background property can be set on classes, ids or directly on the HTML element.

```
.background, #background, body{  
background:#E576A8 }
```

If only the background color should be changed can be used:

```
.background{ background-color:#E576A8 }
```

This example shows the color as background, it is applied via the CSS property "background".

To optimize and compress your CSS code, you can use our [online CSS compressor and optimizer](#) based on csstidy. If you want to create a linear or radial gradient as background or border, check our [CSS Gradient Generator](#).

Hey! You found this booklet interesting? Support Converting Colors with the new Membership Option!

The pro membership hides all ads, plus gives you double the colors in the color bucket, and more awesome pro features!

[Learn more, Memberships starting at \\$2.50/m!](#)

**Follow me
on Twitter!**

@ConvertingColor