

Converting Colors

Decimal(15040654)

Have a look what the booklet for
Decimal(15040654) contains.

Decimal(15040654)	3
<i>Conversions</i>	4
<i>Details</i>	6
<i>Harmonies</i>	11
<i>Previews</i>	23
<i>Color Blindness Simulation</i>	26
<i>CSS Examples</i>	29

Color

Decimal(15040654)

Conversions

Conversions Part 1

Format	Color
Hex	E5808E
RGB	229, 128, 142
RGB Percent	90%, 50%, 56%
CMY	0.1020, 0.4980, 0.4431
CMYK	0.00, 0.44, 0.38, 0.10
HSL	352°, 66%, 70%
HSV	352°, 44%, 90%
XYZ	44.9148, 34.0494, 29.7961
YIQ	159.7950, 55.7020, 25.7660

Conversions

Conversions Part 2

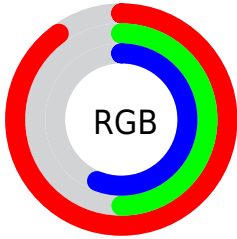
Format	Color
R_{YB}	229, 128, 142
Decimal	15040654
CIE _{Lab}	65.00, 40.31, 9.81
CIE _{LCh}	65, 41.483, 13.681
Yxy	34.0494, 0.4130, 0.3131
Android (android.graphics.Color)	4293230734 (0xFFE5808E)
YUV	159.7950, -8.7729, 60.6928
Hunter-Lab	58.3518, 35.2799, 10.5711

Details

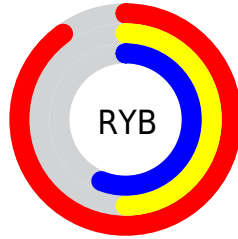
The Decimal color **15040654** is a light color, and the websafe version is hex **FF9999**. A complement of this color would be **8447447**, and the grayscale version is **10526880**.

A 20% lighter version of the original color is **16758468**, and **11226204** is the 20% darker color. If you saturate the color by 10%, you get **15034746**, and if you desaturate by 10%, it is **15046562**.

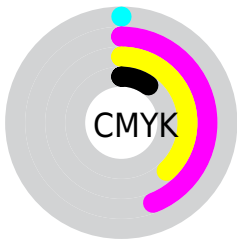
Distribution



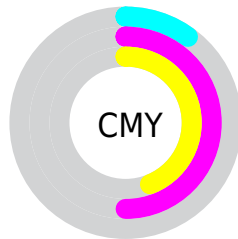
- Red (90%)
- Green (50%)
- Blue (56%)



- Red (90%)
- Yellow (50%)
- Blue (56%)



- Cyan (0%)
- Magenta (44%)
- Yellow (38%)
- Black (10%)



- Cyan (10%)
- Magenta (50%)
- Yellow (44%)

Brightness & Saturation Gradients

These gradients show how the Decimal color 15040654 changes by changing the brightness by 10 percent. The first figure shows a shift by +10% for each color and the second figure -10%.

Similar to the brightness gradients but the following saturation gradients show a change of the Decimal color 15040654 by changing the saturation by 10% instead.

 15040654

 15040654

16777215

 13133428

 16758468

 11226204

 16765919

 9318981

 16773116

 7477038

 5701658

 3997696

 2162689

 0

 15040654

 15040654

 15034746

 15046562

 15028839

 15052469

 15022931

 15058377

 15017023

 15064285

 15011115

 15070193

 15007776

 15073279

Harmonies

Analogous

The Analogous color harmony consists of three colors that are next to each other on the color wheel.



14254772



15040654



14583916

Triad

The Triadic color harmony groups three colors that are evenly spaced from another and form a triangle on the color wheel.



15040654



8104550



3319780

Complementary

The Complementary color scheme is a pair of colors which are on the opposite of each other on the color wheel.



15040654



8447447

Split Complementary

Split-complementary colors differ from the complementary color scheme. The scheme consists of three colors, the original color and two neighbors of the complement color.



45008



15040654



4698248

Square

The Square scheme is like the rectangle color scheme, but the four colors are evenly spaced on the color wheel.



15040654



10789204



45486



8494310

Rectangle

The Rectangle color scheme consists of four colors that form a rectangle on the color wheel.



15040654



13602908



45486



43743

Sweetspot

The Sweet Spot groups the original color and five complimentary colors.



15040654



16768738



14057701



8416110



0



8421504

Same Dimension

The Same Dimension uses a secret algorithm to generate beautiful new colors.



15040654



16742539



15049600



7563113



11730969



3342343

Inverse Universe

The Inverse Universe completely reimagines the original color for something new.



15040654



16742539



8438501



7563113



11730969



3342343

Previews

White Background



This preview shows how the Decimal color 15040654 looks on a white background.

Color Contrast Check

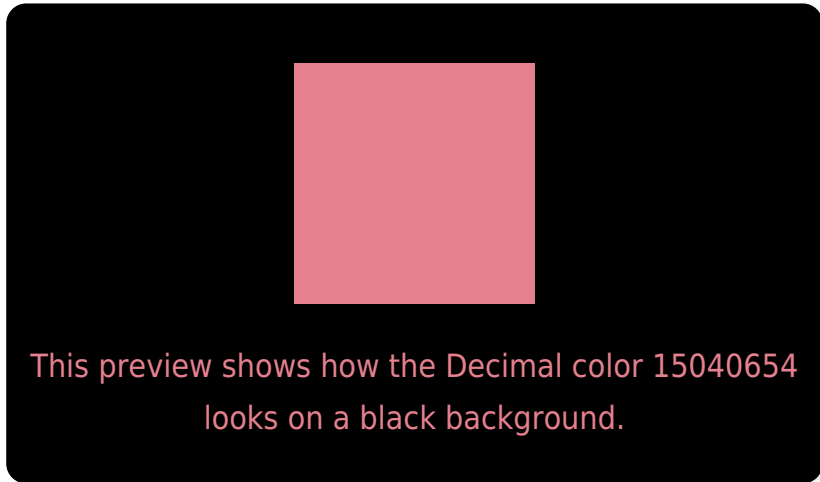
Large Text (above 18pt) WCAG AA × Fail

Any Text WCAG AA × Fail

Large Text (above 18pt) WCAG AAA × Fail

Any Text WCAG AAA × Fail

Black Background



Color Contrast Check

Large Text (above 18pt) WCAG AA ✓ Pass

Any Text WCAG AA ✓ Pass

Large Text (above 18pt) WCAG AAA ✓ Pass

Any Text WCAG AAA ✓ Pass

If you want to check with other color combinations, try the [Color Contrast Checker](#).

Decimal 15040654 Background



This preview shows how black text looks on a background with the Decimal color 15040654.

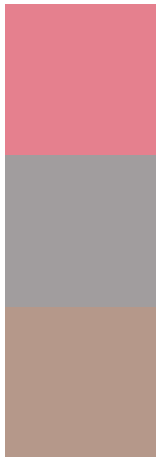


This preview shows how white text looks on a background with the Decimal color 15040654.

Color Blindness Simulation

Color vision deficiency is a very complex topic, and I could not describe the different causes any better than Wikipedia does, so if you want to learn more, you should check out their [article about color blindness](#).

Dichromacy



Original Color
15040654

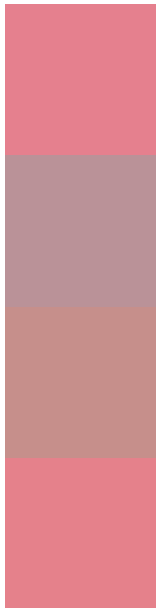
Protanopia
10591646

Deuteranopia
11901066



Tritanopia
15040906

Trichromacy



Original Color
15040654

Protanomaly
12227224

Deuteranomaly
13012875

Tritanomaly
15040907

Monochromacy



Original Color
15040654

Achromatopsia
10526880

Achromatomaly
12162201

CSS Examples

Text

The CSS property to change the color of the text to Decimal 15040654 is called "color". The color property can be set on classes, ids or directly on the HTML element.

This example shows how text in the color #E5808E looks like.

```
.text, #text, p{  
  color:#E5808E  
}
```

If you want to add a text shadow in that color use the text-shadow property, you can generate a text shadow directly with our [CSS Text Shadow Generator](#).

Here you see how black text with a 4 pixel #E5808E colored shadow looks like.

```
.shadow{ text-shadow: 4px 4px 2px #E5808E
}
```

Border

The CSS property to change the border of an element to Decimal 15040654 is called "border". The border property can be set on classes, ids or directly on the HTML element.

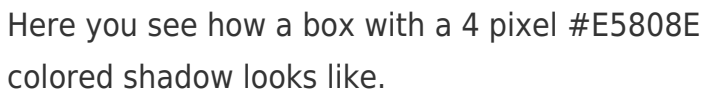
This example shows the color as border, it can be applied via the CSS property "border" or "border-color".

```
.border, #border, table{ border:4px solid
#E5808E }
```

If only the border color should be changed use the property `border-color`.

```
.border{ border-color:#E5808E }
```

If you want to add a box shadow in that color use:



Here you see how a box with a 4 pixel #E5808E colored shadow looks like.

```
.boxshadow{ -moz-box-shadow:4px 4px 4px  
4px #E5808E; -webkit-box-shadow:4px 4px  
4px 4px #E5808E; box-shadow:4px 4px 4px  
4px #E5808E }
```

Background

The CSS property to change the background color of an element to Decimal 15040654 is called "background". The background property can be set on classes, ids or directly on the HTML element.

```
.background, #background, body{  
background:#E5808E }
```

If only the background color should be changed can be used:

```
.background{ background-color:#E5808E }
```

This example shows the color as background, it is applied via the CSS property "background".

To optimize and compress your CSS code, you can use our [online CSS compressor and optimizer](#) based on csstidy. If you want to create a linear or radial gradient as background or border, check our [CSS Gradient Generator](#).

Hey! You found this booklet interesting? Support Converting Colors with the new Membership Option!

The pro membership hides all ads, plus gives you double the colors in the color bucket, and more awesome pro features!

[Learn more, Memberships starting at \\$2.50/m!](#)

**Follow me
on Twitter!**

@ConvertingColor