

Converting Colors

Decimal(15040655)

Have a look what the booklet for
Decimal(15040655) contains.

Decimal(15040655)	3
<i>Conversions</i>	4
<i>Details</i>	6
<i>Harmonies</i>	11
<i>Previews</i>	23
<i>Color Blindness Simulation</i>	26
<i>CSS Examples</i>	29

Color

Decimal(15040655)

Conversions

Conversions Part 1

Format	Color
Hex	E5808F
RGB	229, 128, 143
RGB Percent	90%, 50%, 56%
CMY	0.1020, 0.4980, 0.4392
CMYK	0.00, 0.44, 0.38, 0.10
HSL	351°, 66%, 70%
HSV	351°, 44%, 90%
XYZ	44.9902, 34.0795, 30.1934
YIQ	159.9090, 55.3810, 26.0770

Conversions

Conversions Part 2

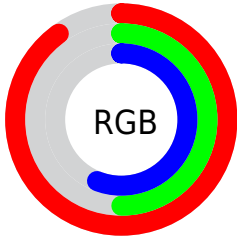
Format	Color
R_{YB}	229, 128, 143
Decimal	15040655
CIE _{Lab}	65.03, 40.42, 9.28
CIE _{LCh}	65, 41.472, 12.928
Yxy	34.0795, 0.4118, 0.3119
Android (android.graphics.Color)	4293230735 (0xFFE5808F)
YUV	159.9090, -8.3361, 60.5928
Hunter-Lab	58.3777, 35.4045, 10.1991

Details

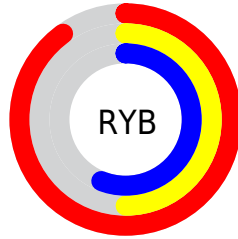
The Decimal color **15040655** is a light color, and the websafe version is hex **FF9999**. A complement of this color would be **8447446**, and the grayscale version is **10526880**.

A 20% lighter version of the original color is **16758469**, and **11226205** is the 20% darker color. If you saturate the color by 10%, you get **15034748**, and if you desaturate by 10%, it is **15046562**.

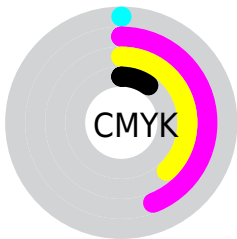
Distribution



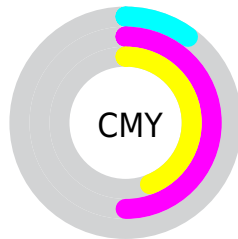
- Red (90%)
- Green (50%)
- Blue (56%)



- Red (90%)
- Yellow (50%)
- Blue (56%)



- Cyan (0%)
- Magenta (44%)
- Yellow (38%)
- Black (10%)



- Cyan (10%)
- Magenta (50%)
- Yellow (44%)

Brightness & Saturation Gradients

These gradients show how the Decimal color 15040655 changes by changing the brightness by 10 percent. The first figure shows a shift by +10% for each color and the second figure -10%.

Similar to the brightness gradients but the following saturation gradients show a change of the Decimal color 15040655 by changing the saturation by 10% instead.

 15040655

 15040655

16777215

 13133429

 16758469

 11226205

 16765921

 9318981

 16773117

 7477039

 5701659

 3997696

 2162689

 0

 15040655

 15040655

 15034748

 15046562

 15028840

 15052470

 15022933

 15058377

 15017025

 15064285

 15011118

 15070192

 15007778

 15073279

Harmonies

Analogous

The Analogous color harmony consists of three colors that are next to each other on the color wheel.



14189493



15040655



14583661

Triad

The Triadic color harmony groups three colors that are evenly spaced from another and form a triangle on the color wheel.



15040655



8170086



3123428

Complementary

The Complementary color scheme is a pair of colors which are on the opposite of each other on the color wheel.



15040655



8447446

Split Complementary

Split-complementary colors differ from the complementary color scheme. The scheme consists of three colors, the original color and two neighbors of the complement color.



45007



15040655



4829319

Square

The Square scheme is like the rectangle color scheme, but the four colors are evenly spaced on the color wheel.



15040655



10854740



45485



8428774

Rectangle

The Rectangle color scheme consists of four colors that form a rectangle on the color wheel.



15040655



13668444



45485



43999

Sweetspot

The Sweet Spot groups the original color and five complimentary colors.



15040655



16768739



14057701



8416110



0



8421504

Same Dimension

The Same Dimension uses a secret algorithm to generate beautiful new colors.



15040655



16742540



15049600



7563113



11730971



3342344

Inverse Universe

The Inverse Universe completely reimagines the original color for something new.



15040655



16742540



8438501



7563113



11730971



3342344

Previews

White Background



This preview shows how the Decimal color 15040655 looks on a white background.

Color Contrast Check

Large Text (above 18pt) WCAG AA × Fail

Any Text WCAG AA × Fail

Large Text (above 18pt) WCAG AAA × Fail

Any Text WCAG AAA × Fail

Black Background



This preview shows how the Decimal color 15040655 looks on a black background.

Color Contrast Check

Large Text (above 18pt) WCAG AA ✓ Pass

Any Text WCAG AA ✓ Pass

Large Text (above 18pt) WCAG AAA ✓ Pass

Any Text WCAG AAA ✓ Pass

If you want to check with other color combinations, try the [Color Contrast Checker](#).

Decimal 15040655 Background



This preview shows how black text looks on a background with the Decimal color 15040655.

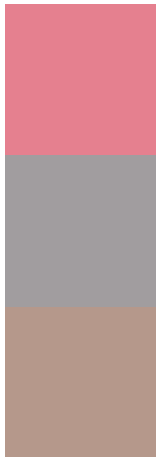


This preview shows how white text looks on a background with the Decimal color 15040655.

Color Blindness Simulation

Color vision deficiency is a very complex topic, and I could not describe the different causes any better than Wikipedia does, so if you want to learn more, you should check out their [article about color blindness](#).

Dichromacy



Original Color
15040655

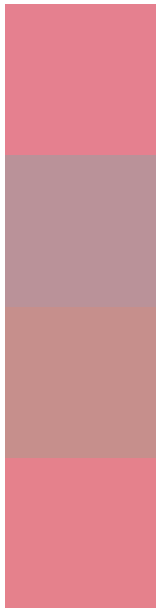
Protanopia
10591647

Deuteranopia
11901067



Tritanopia
15040906

Trichromacy



Original Color
15040655

Protanomaly
12227225

Deuteranomaly
13012876

Tritanomaly
15040908

Monochromacy



Original Color
15040655

Achromatopsia
10526880

Achromatomaly
12162202

CSS Examples

Text

The CSS property to change the color of the text to Decimal 15040655 is called "color". The color property can be set on classes, ids or directly on the HTML element.

This example shows how text in the color #E5808F looks like.

```
.text, #text, p{  
  color:#E5808F  
}
```

If you want to add a text shadow in that color use the text-shadow property, you can generate a text shadow directly with our [CSS Text Shadow Generator](#).

Here you see how black text with a 4 pixel #E5808F colored shadow looks like.

```
.shadow{ text-shadow: 4px 4px 2px #E5808F
}
```

Border

The CSS property to change the border of an element to Decimal 15040655 is called "border". The border property can be set on classes, ids or directly on the HTML element.

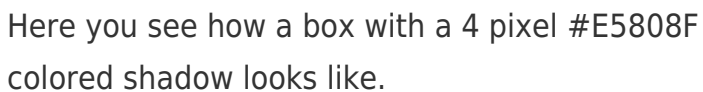
This example shows the color as border, it can be applied via the CSS property "border" or "border-color".

```
.border, #border, table{ border:4px solid
#E5808F }
```

If only the border color should be changed use the property `border-color`.

```
.border{ border-color:#E5808F }
```

If you want to add a box shadow in that color use:



Here you see how a box with a 4 pixel #E5808F colored shadow looks like.

```
.boxshadow{ -moz-box-shadow:4px 4px 4px  
4px #E5808F; -webkit-box-shadow:4px 4px  
4px 4px #E5808F; box-shadow:4px 4px 4px  
4px #E5808F }
```

Background

The CSS property to change the background color of an element to Decimal 15040655 is called "background". The background property can be set on classes, ids or directly on the HTML element.

```
.background, #background, body{  
background:#E5808F }
```

If only the background color should be changed can be used:

```
.background{ background-color:#E5808F }
```

This example shows the color as background, it is applied via the CSS property "background".

To optimize and compress your CSS code, you can use our [online CSS compressor and optimizer](#) based on csstidy. If you want to create a linear or radial gradient as background or border, check our [CSS Gradient Generator](#).

Hey! You found this booklet interesting? Support Converting Colors with the new Membership Option!

The pro membership hides all ads, plus gives you double the colors in the color bucket, and more awesome pro features!

[Learn more, Memberships starting at \\$2.50/m!](#)

**Follow me
on Twitter!**

@ConvertingColor