

# Converting Colors

Decimal(15048873)

Have a look what the booklet for  
Decimal(15048873) contains.

<b>Decimal(15048873)</b> .....	3
<i><b>Conversions</b></i> .....	4
<i><b>Details</b></i> .....	6
<i><b>Harmonies</b></i> .....	11
<i><b>Previews</b></i> .....	23
<i><b>Color Blindness Simulation</b></i> .....	26
<i><b>CSS Examples</b></i> .....	29

# **Color**

**Decimal(15048873)**

# Conversions

## Conversions Part 1

Format	Color
Hex	E5A0A9
RGB	229, 160, 169
RGB Percent	90%, 63%, 66%
CMY	0.1020, 0.3725, 0.3373
CMYK	0.00, 0.30, 0.26, 0.10
HSL	352°, 57%, 76%
HSV	352°, 30%, 90%
XYZ	52.0453, 44.6642, 43.4141
YIQ	181.6570, 38.2350, 17.4270

# Conversions

## Conversions Part 2

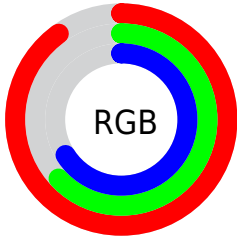
Format	Color
R <sub>Y</sub> B	229, 160, 169
Decimal	15048873
CIE Lab	72.67, 26.86, 5.68
CIE LCh	73, 27.451, 11.932
Yxy	44.6642, 0.3714, 0.3187
Android (android.graphics.Color)	4293238953 (0xFFE5A0A9)
YUV	181.6570, -6.2399, 41.5198
Hunter-Lab	66.8313, 22.0534, 8.2667

# Details

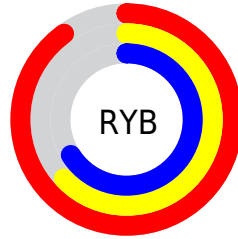
The Decimal color **15048873** is a light color, and the websafe version is hex **CC9999**. A complement of this color would be **10544604**, and the grayscale version is **11974326**.

A 20% lighter version of the original color is **16766944**, and **11299957** is the 20% darker color. If you saturate the color by 10%, you get **15042965**, and if you desaturate by 10%, it is **15054781**.

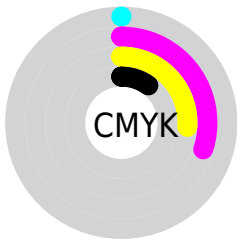
# Distribution



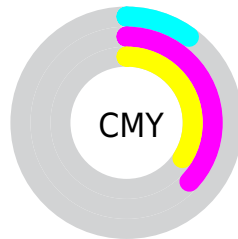
- Red (90%)
- Green (63%)
- Blue (66%)



- Red (90%)
- Yellow (63%)
- Blue (66%)



- Cyan (0%)
- Magenta (30%)
- Yellow (26%)
- Black (10%)



- Cyan (10%)
- Magenta (37%)
- Yellow (34%)

# Brightness & Saturation Gradients

These gradients show how the Decimal color 15048873 changes by changing the brightness by 10 percent. The first figure shows a shift by +10% for each color and the second figure -10%.

Similar to the brightness gradients but the following saturation gradients show a change of the Decimal color 15048873 by changing the saturation by 10% instead.



 15048873

 15048873

16777215

 13141391

 16766944

 11299957

 16774397

 9524060

 7748421

 6038575

 4328474

 2949120

 0

 15048873

 15048873

 15042965

 15054781

 15037057

 15060689

 15031149

 15066597

 15025241

 15072505

 15019333

 15073279

 15013682

 15007774

# Harmonies

## Analogous

The Analogous color harmony consists of three colors that are next to each other on the color wheel.



14394050



15048873



14787730

# Triad

The Triadic color harmony groups three colors that are evenly spaced from another and form a triangle on the color wheel.



15048873



10402700



8305121

# Complementary

The Complementary color scheme is a pair of colors which are on the opposite of each other on the color wheel.



15048873



10544604

# Split Complementary

Split-complementary colors differ from the complementary color scheme. The scheme consists of three colors, the original color and two neighbors of the complement color.



6864595



15048873



8568738

# Square

The Square scheme is like the rectangle color scheme, but the four colors are evenly spaced on the color wheel.



15048873



12235905



7127228



10596835

# Rectangle

The Rectangle color scheme consists of four colors that form a rectangle on the color wheel.



15048873



14199175



7127228



7715806



# Sweetspot

The Sweet Spot groups the original color and five complimentary colors.



15048873



16771307



14459109



8417651



0



8421504



# Same Dimension

The Same Dimension uses a secret algorithm to generate beautiful new colors.



15048873



16753583



15055264



7563113



11730967



3342343



# Inverse Universe

The Inverse Universe completely reimagines the original color for something new.



15048873



16753583



10538213



7563113



11730967



3342343



# Previews

## White Background



This preview shows how the Decimal color 15048873 looks on a white background.

## Color Contrast Check

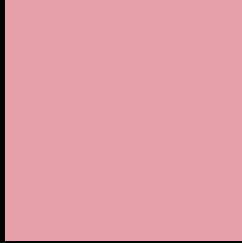
Large Text (above 18pt) WCAG AA × Fail

Any Text WCAG AA × Fail

Large Text (above 18pt) WCAG AAA × Fail

Any Text WCAG AAA × Fail

# Black Background



This preview shows how the Decimal color 15048873 looks on a black background.

## Color Contrast Check

Large Text (above 18pt) WCAG AA ✓ Pass

Any Text WCAG AA ✓ Pass

Large Text (above 18pt) WCAG AAA ✓ Pass

Any Text WCAG AAA ✓ Pass

If you want to check with other color combinations, try the [Color Contrast Checker](#).



## Decimal 15048873 Background



This preview shows how black text looks on a background with the Decimal color 15048873.



This preview shows how white text looks on a background with the Decimal color 15048873.

# Color Blindness Simulation

Color vision deficiency is a very complex topic, and I could not describe the different causes any better than Wikipedia does, so if you want to learn more, you should check out their [article about color blindness](#).

## Dichromacy



**Original Color**  
15048873

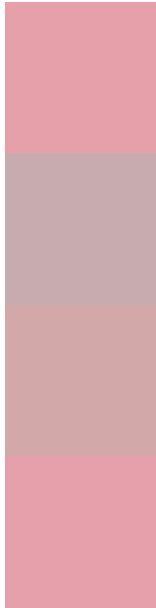
**Protanopia**  
11973299

**Deuteranopia**  
13151399



**Tritanopia**  
15048876

# Trichromacy



**Original Color**  
15048873

**Protanomaly**  
13085615

**Deuteranomaly**  
13871272

**Tritanomaly**  
15048875

# Monochromacy



**Original Color**  
15048873

**Achromatopsia**  
11974326

**Achromatomaly**  
13086385

# CSS Examples

## Text

The CSS property to change the color of the text to Decimal 15048873 is called "color". The color property can be set on classes, ids or directly on the HTML element.

This example shows how text in the color #E5A0A9 looks like.

```
.text, #text, p{  
    color:#E5A0A9  
}
```

If you want to add a text shadow in that color use the text-shadow property, you can generate a text shadow directly with our [CSS Text Shadow Generator](#).

Here you see how black text with a 4 pixel #E5A0A9 colored shadow looks like.

```
.shadow{ text-shadow: 4px 4px 2px #E5A0A9
}
```

## Border

The CSS property to change the border of an element to Decimal 15048873 is called "border". The border property can be set on classes, ids or directly on the HTML element.

This example shows the color as border, it can be applied via the CSS property "border" or "border-color".

```
.border, #border, table{ border:4px solid
#E5A0A9 }
```

If only the border color should be changed use the property `border-color`.

```
.border{ border-color:#E5A0A9 }
```

If you want to add a box shadow in that color use:

Here you see how a box with a 4 pixel #E5A0A9 colored shadow looks like.

```
.boxshadow{ -moz-box-shadow:4px 4px 4px  
4px #E5A0A9; -webkit-box-shadow:4px 4px  
4px 4px #E5A0A9; box-shadow:4px 4px 4px  
4px #E5A0A9 }
```

# Background

The CSS property to change the background color of an element to Decimal 15048873 is called "background". The background property can be set on classes, ids or directly on the HTML element.

```
.background, #background, body{  
background:#E5A0A9 }
```

If only the background color should be changed can be used:

```
.background{ background-color:#E5A0A9 }
```

This example shows the color as background, it is applied via the CSS property "background".

To optimize and compress your CSS code, you can use our [online CSS compressor and optimizer](#) based on csstidy. If you want to create a linear or radial gradient as background or border, check our [CSS Gradient Generator](#).



Hey! You found this booklet interesting? Support Converting Colors with the new Membership Option!

The pro membership hides all ads, plus gives you double the colors in the color bucket, and more awesome pro features!

**[Learn more, Memberships starting at \\$2.50/m!](#)**

**Follow me  
on Twitter!**

@ConvertingColor