

Converting Colors

Decimal(15051960)

Have a look what the booklet for
Decimal(15051960) contains.

Decimal(15051960)	3
<i>Conversions</i>	4
<i>Details</i>	6
<i>Harmonies</i>	11
<i>Previews</i>	23
<i>Color Blindness Simulation</i>	26
<i>CSS Examples</i>	29

Color

Decimal(15051960)

Conversions

Conversions Part 1

Format	Color
Hex	E5ACB8
RGB	229, 172, 184
RGB Percent	90%, 67%, 72%
CMY	0.1020, 0.3255, 0.2784
CMYK	0.00, 0.25, 0.20, 0.10
HSL	347°, 52%, 79%
HSV	347°, 25%, 90%
XYZ	55.7174, 49.6238, 51.9891
YIQ	190.4110, 30.1200, 15.8160

Conversions

Conversions Part 2

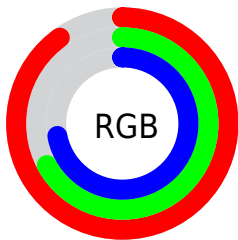
Format	Color
R _Y B	229, 172, 184
Decimal	15051960
CIE Lab	75.84, 22.61, 2.02
CIE LCh	76, 22.698, 5.109
Yxy	49.6238, 0.3541, 0.3154
Android (android.graphics.Color)	4293242040 (0xFFE5ACB8)
YUV	190.4110, -3.1606, 33.8426
Hunter-Lab	70.4441, 17.9063, 5.5537

Details

The Decimal color **15051960** is a light color, and the websafe version is hex **CC9999**. A complement of this color would be **11331033**, and the grayscale version is **12500670**.

A 20% lighter version of the original color is **16770288**, and **11368323** is the 20% darker color. If you saturate the color by 10%, you get **15046054**, and if you desaturate by 10%, it is **15057866**.

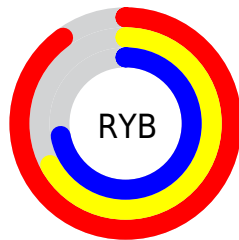
Distribution



Red (90%)

Green (67%)

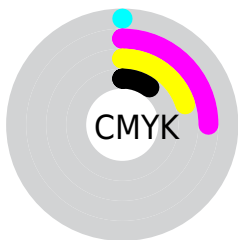
Blue (72%)



Red (90%)

Yellow (67%)

Blue (72%)

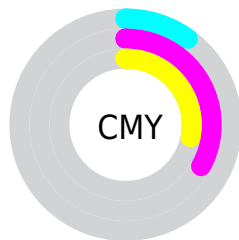


Cyan (0%)

Magenta (25%)

Yellow (20%)

Black (10%)



Cyan (10%)

Magenta (33%)

Yellow (28%)

Brightness & Saturation Gradients

These gradients show how the Decimal color 15051960 changes by changing the brightness by 10 percent. The first figure shows a shift by +10% for each color and the second figure -10%.

Similar to the brightness gradients but the following saturation gradients show a change of the Decimal color 15051960 by changing the saturation by 10% instead.

 15051960

 15051960

16777215

 13144477

 16770288

 11368323

 9526890

 7816786

 6106939

 4528421

 2949648

 786432

 0

 15051960

 15051960

 15046054

 15057866

 15040148

 15063772

 15034242

 15069678

 15028336

 15073279

 15022430

 15016780

 15010873

 15007792

Harmonies

Analogous

The Analogous color harmony consists of three colors that are next to each other on the color wheel.



14266061



15051960



15052452

Triad

The Triadic color harmony groups three colors that are evenly spaced from another and form a triangle on the color wheel.



15051960



11583896



9356000

Complementary

The Complementary color scheme is a pair of colors which are on the opposite of each other on the color wheel.



15051960



11331033

Split Complementary

Split-complementary colors differ from the complementary color scheme. The scheme consists of three colors, the original color and two neighbors of the complement color.



8505042



15051960



10012073

Square

The Square scheme is like the rectangle color scheme, but the four colors are evenly spaced on the color wheel.



15051960



13089681



8832958



10992868

Rectangle

The Rectangle color scheme consists of four colors that form a rectangle on the color wheel.



15051960



14660249



8832958



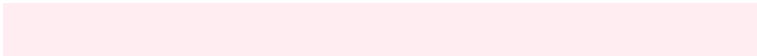
8897501

Sweetspot

The Sweet Spot groups the original color and five complimentary colors.



15051960



16772593



14265573



8418679



0



8421504

Same Dimension

The Same Dimension uses a secret algorithm to generate beautiful new colors.



15051960



16757699



15056044



7563114



11730982



3342347

Inverse Universe

The Inverse Universe completely reimagines the original color for something new.



15051960



16757699



11326949



7563114



11730982



3342347

Previews

White Background



This preview shows how the Decimal color 15051960 looks on a white background.

Color Contrast Check

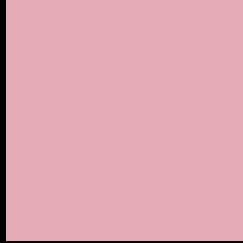
Large Text (above 18pt) WCAG AA × Fail

Any Text WCAG AA × Fail

Large Text (above 18pt) WCAG AAA × Fail

Any Text WCAG AAA × Fail

Black Background



This preview shows how the Decimal color 15051960 looks on a black background.

Color Contrast Check

Large Text (above 18pt) WCAG AA ✓ Pass

Any Text WCAG AA ✓ Pass

Large Text (above 18pt) WCAG AAA ✓ Pass

Any Text WCAG AAA ✓ Pass

If you want to check with other color combinations, try the [Color Contrast Checker](#).

Decimal 15051960 Background



This preview shows how black text looks on a background with the Decimal color 15051960.




This preview shows how white text looks on a background with the Decimal color 15051960.

Color Blindness Simulation

Color vision deficiency is a very complex topic, and I could not describe the different causes any better than Wikipedia does, so if you want to learn more, you should check out their [article about color blindness](#).

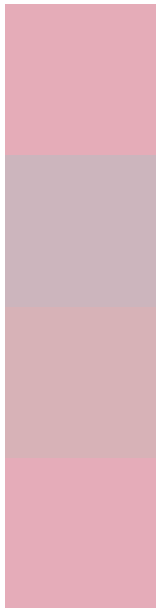
Dichromacy





Tritanopia
15051961

Trichromacy



Original Color
15051960

Protanomaly
13415869

Deuteranomaly
14135991

Tritanomaly
15051961

Monochromacy



Original Color
15051960

Achromatopsia
12500670

Achromatomaly
13416380

CSS Examples

Text

The CSS property to change the color of the text to Decimal 15051960 is called "color". The color property can be set on classes, ids or directly on the HTML element.

This example shows how text in the color #E5ACB8 looks like.

```
.text, #text, p{  
  color:#E5ACB8  
}
```

If you want to add a text shadow in that color use the text-shadow property, you can generate a text shadow directly with our [CSS Text Shadow Generator](#).

Here you see how black text with a 4 pixel #E5ACB8 colored shadow looks like.

```
.shadow{ text-shadow: 4px 4px 2px #E5ACB8
}
```

Border

The CSS property to change the border of an element to Decimal 15051960 is called "border". The border property can be set on classes, ids or directly on the HTML element.

This example shows the color as border, it can be applied via the CSS property "border" or "border-color".

```
.border, #border, table{ border:4px solid
#E5ACB8 }
```

If only the border color should be changed use the property `border-color`.

```
.border{ border-color:#E5ACB8 }
```

If you want to add a box shadow in that color use:

Here you see how a box with a 4 pixel #E5ACB8 colored shadow looks like.

```
.boxshadow{ -moz-box-shadow:4px 4px 4px  
4px #E5ACB8; -webkit-box-shadow:4px 4px  
4px 4px #E5ACB8; box-shadow:4px 4px 4px  
4px #E5ACB8 }
```

Background

The CSS property to change the background color of an element to Decimal 15051960 is called "background". The background property can be set on classes, ids or directly on the HTML element.

```
.background, #background, body{  
background:#E5ACB8 }
```

If only the background color should be changed can be used:

```
.background{ background-color:#E5ACB8 }
```

This example shows the color as background, it is applied via the CSS property "background".

To optimize and compress your CSS code, you can use our [online CSS compressor and optimizer](#) based on csstidy. If you want to create a linear or radial gradient as background or border, check our [CSS Gradient Generator](#).

Hey! You found this booklet interesting? Support Converting Colors with the new Membership Option!

The pro membership hides all ads, plus gives you double the colors in the color bucket, and more awesome pro features!

[Learn more, Memberships starting at \\$2.50/m!](#)

**Follow me
on Twitter!**

@ConvertingColor