

# Converting Colors

Decimal(15052215)

Have a look what the booklet for  
Decimal(15052215) contains.

<b>Decimal(15052215)</b> .....	3
<i><b>Conversions</b></i> .....	4
<i><b>Details</b></i> .....	6
<i><b>Harmonies</b></i> .....	11
<i><b>Previews</b></i> .....	23
<i><b>Color Blindness Simulation</b></i> .....	26
<i><b>CSS Examples</b></i> .....	29

# **Color**

**Decimal(15052215)**

# Conversions

## Conversions Part 1

Format	Color
Hex	E5ADB7
RGB	229, 173, 183
RGB Percent	90%, 68%, 72%
CMY	0.1020, 0.3216, 0.2824
CMYK	0.00, 0.24, 0.20, 0.10
HSL	349°, 52%, 79%
HSV	349°, 24%, 90%
XYZ	55.8039, 49.9641, 51.5026
YIQ	190.8840, 30.1660, 14.9820

# Conversions

## Conversions Part 2

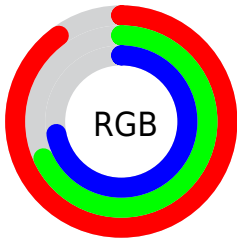
Format	Color
R <sub>Y</sub> B	229, 173, 183
Decimal	15052215
CIE Lab	76.05, 21.92, 2.87
CIE LCh	76, 22.109, 7.462
Yxy	49.9641, 0.3548, 0.3177
Android (android.graphics.Color)	4293242295 (0xFFE5ADB7)
YUV	190.8840, -3.8868, 33.4277
Hunter-Lab	70.6853, 17.2213, 6.2799

# Details

The Decimal color **15052215** is a light color, and the websafe version is hex **CC9999**. A complement of this color would be **11396571**, and the grayscale version is **12566463**.

A 20% lighter version of the original color is **16770543**, and **11368578** is the 20% darker color. If you saturate the color by 10%, you get **15046308**, and if you desaturate by 10%, it is **15058122**.

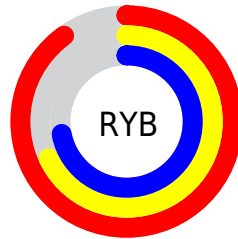
# Distribution



Red (90%)

Green (68%)

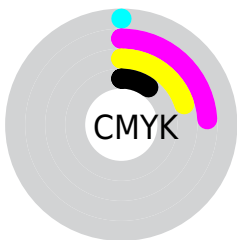
Blue (72%)



Red (90%)

Yellow (68%)

Blue (72%)

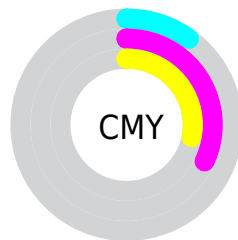


Cyan (0%)

Magenta (24%)

Yellow (20%)

Black (10%)



Cyan (10%)

Magenta (32%)

Yellow (28%)

# Brightness & Saturation Gradients

These gradients show how the Decimal color 15052215 changes by changing the brightness by 10 percent. The first figure shows a shift by +10% for each color and the second figure -10%.

Similar to the brightness gradients but the following saturation gradients show a change of the Decimal color 15052215 by changing the saturation by 10% instead.



 15052215

 15052215


16777215

 13144732

 16770543

 11368578

 9527145

 7817041

 6107194

 4528677

 2949903

 851968

 0

 15052215

 15052215

 15046308

 15058122

 15040401

 15064029

 15034495

 15069935

 15028588

 15073279

 15022937

 15017030

 15011123

 15007785

# Harmonies

## Analogous

The Analogous color harmony consists of three colors that are next to each other on the color wheel.



14331852



15052215



14987172

# Triad

The Triadic color harmony groups three colors that are evenly spaced from another and form a triangle on the color wheel.



15052215



11518619



9552609

# Complementary

The Complementary color scheme is a pair of colors which are on the opposite of each other on the color wheel.



15052215



11396571

# Split Complementary

Split-complementary colors differ from the complementary color scheme. The scheme consists of three colors, the original color and two neighbors of the complement color.



8701652



15052215



10012331

# Square

The Square scheme is like the rectangle color scheme, but the four colors are evenly spaced on the color wheel.



15052215



13024403



8898496



11255012

# Rectangle

The Rectangle color scheme consists of four colors that form a rectangle on the color wheel.



15052215



14594970



8898496



9159645



# Sweetspot

The Sweet Spot groups the original color and five complimentary colors.



15052215



16772592



14396901



8418679



0



8421504



# Same Dimension

The Same Dimension uses a secret algorithm to generate beautiful new colors.



15052215



16758210



15056813



7563113



11730976



3342345



# Inverse Universe

The Inverse Universe completely reimagines the original color for something new.



15052215



16758210



11391973



7563113



11730976

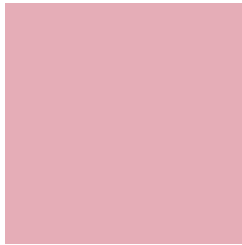


3342345



# Previews

## White Background



This preview shows how the Decimal color 15052215 looks on a white background.

## Color Contrast Check

Large Text (above 18pt) WCAG AA × Fail

Any Text WCAG AA × Fail

Large Text (above 18pt) WCAG AAA × Fail

Any Text WCAG AAA × Fail

# Black Background



This preview shows how the Decimal color 15052215 looks on a black background.

## Color Contrast Check

Large Text (above 18pt) WCAG AA ✓ Pass

Any Text WCAG AA ✓ Pass

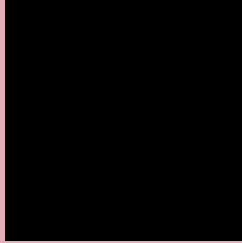
Large Text (above 18pt) WCAG AAA ✓ Pass

Any Text WCAG AAA ✓ Pass

If you want to check with other color combinations, try the [Color Contrast Checker](#).



## Decimal 15052215 Background



This preview shows how black text looks on a background with the Decimal color 15052215.



This preview shows how white text looks on a background with the Decimal color 15052215.

# Color Blindness Simulation

Color vision deficiency is a very complex topic, and I could not describe the different causes any better than Wikipedia does, so if you want to learn more, you should check out their [article about color blindness](#).


## Dichromacy



**Original Color**  
15052215

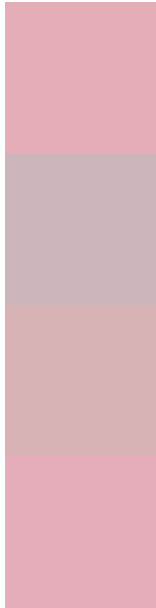
**Protanopia**  
12499903

**Deuteranopia**  
13678261



**Tritanopia**  
15052218

# Trichromacy



**Original Color**  
15052215

**Protanomaly**  
13416124

**Deuteranomaly**  
14201782

**Tritanomaly**  
15052217

# Monochromacy



**Original Color**  
15052215

**Achromatopsia**  
12566463

**Achromatomaly**  
13482172

# CSS Examples

## Text

The CSS property to change the color of the text to Decimal 15052215 is called "color". The color property can be set on classes, ids or directly on the HTML element.

This example shows how text in the color #E5ADB7 looks like.

```
.text, #text, p{  
    color:#E5ADB7  
}
```

If you want to add a text shadow in that color use the text-shadow property, you can generate a text shadow directly with our [CSS Text Shadow Generator](#).

Here you see how black text with a 4 pixel #E5ADB7 colored shadow looks like.

```
.shadow{ text-shadow: 4px 4px 2px #E5ADB7  
}
```

## Border

The CSS property to change the border of an element to Decimal 15052215 is called "border". The border property can be set on classes, ids or directly on the HTML element.

This example shows the color as border, it can be applied via the CSS property "border" or "border-color".

```
.border, #border, table{ border:4px solid  
#E5ADB7 }
```

If only the border color should be changed use the property `border-color`.

```
.border{ border-color:#E5ADB7 }
```

If you want to add a box shadow in that color use:

Here you see how a box with a 4 pixel #E5ADB7 colored shadow looks like.

```
.boxshadow{ -moz-box-shadow:4px 4px 4px  
4px #E5ADB7; -webkit-box-shadow:4px 4px  
4px 4px #E5ADB7; box-shadow:4px 4px 4px  
4px #E5ADB7 }
```

# Background

The CSS property to change the background color of an element to Decimal 15052215 is called "background". The background property can be set on classes, ids or directly on the HTML element.

```
.background, #background, body{  
background:#E5ADB7 }
```

If only the background color should be changed can be used:

```
.background{ background-color:#E5ADB7 }
```

This example shows the color as background, it is applied via the CSS property "background".

To optimize and compress your CSS code, you can use our [online CSS compressor and optimizer](#) based on csstidy. If you want to create a linear or radial gradient as background or border, check our [CSS Gradient Generator](#).



Hey! You found this booklet interesting? Support Converting Colors with the new Membership Option!

The pro membership hides all ads, plus gives you double the colors in the color bucket, and more awesome pro features!

**[Learn more, Memberships starting at \\$2.50/m!](#)**

**Follow me  
on Twitter!**

@ConvertingColor