

Converting Colors

Decimal(15052485)

Have a look what the booklet for
Decimal(15052485) contains.

Decimal(15052485)	3
<i>Conversions</i>	4
<i>Details</i>	6
<i>Harmonies</i>	11
<i>Previews</i>	23
<i>Color Blindness Simulation</i>	26
<i>CSS Examples</i>	29

Color

Decimal(15052485)

Conversions

Conversions Part 1

Format	Color
Hex	E5AEC5
RGB	229, 174, 197
RGB Percent	90%, 68%, 77%
CMY	0.1020, 0.3176, 0.2275
CMYK	0.00, 0.24, 0.14, 0.10
HSL	335°, 51%, 79%
HSV	335°, 24%, 90%
XYZ	57.5272, 50.9613, 59.6278
YIQ	193.0670, 25.3970, 18.8130

Conversions

Conversions Part 2

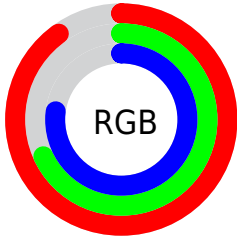
Format	Color
R _Y B	229, 174, 197
Decimal	15052485
CIE Lab	76.66, 23.57, -3.88
CIE LCh	77, 23.882, 350.655
Yxy	50.9613, 0.3422, 0.3031
Android (android.graphics.Color)	4293242565 (0xFFE5AEC5)
YUV	193.0670, 1.9390, 31.5132
Hunter-Lab	71.3872, 18.9161, 0.4477

Details

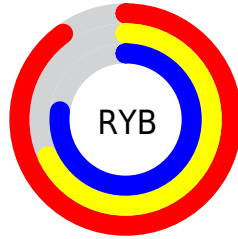
The Decimal color **15052485** is a light color, and the websafe version is hex **CC9999**. A complement of this color would be **11462094**, and the grayscale version is **12698049**.

A 20% lighter version of the original color is **16770814**, and **11368847** is the 20% darker color. If you saturate the color by 10%, you get **15046584**, and if you desaturate by 10%, it is **15058386**.

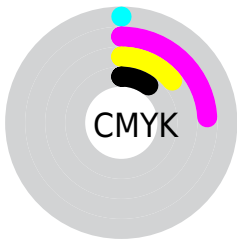
Distribution



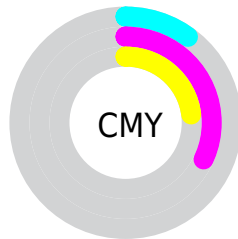
- Red (90%)
- Green (68%)
- Blue (77%)



- Red (90%)
- Yellow (68%)
- Blue (77%)



- Cyan (0%)
- Magenta (24%)
- Yellow (14%)
- Black (10%)

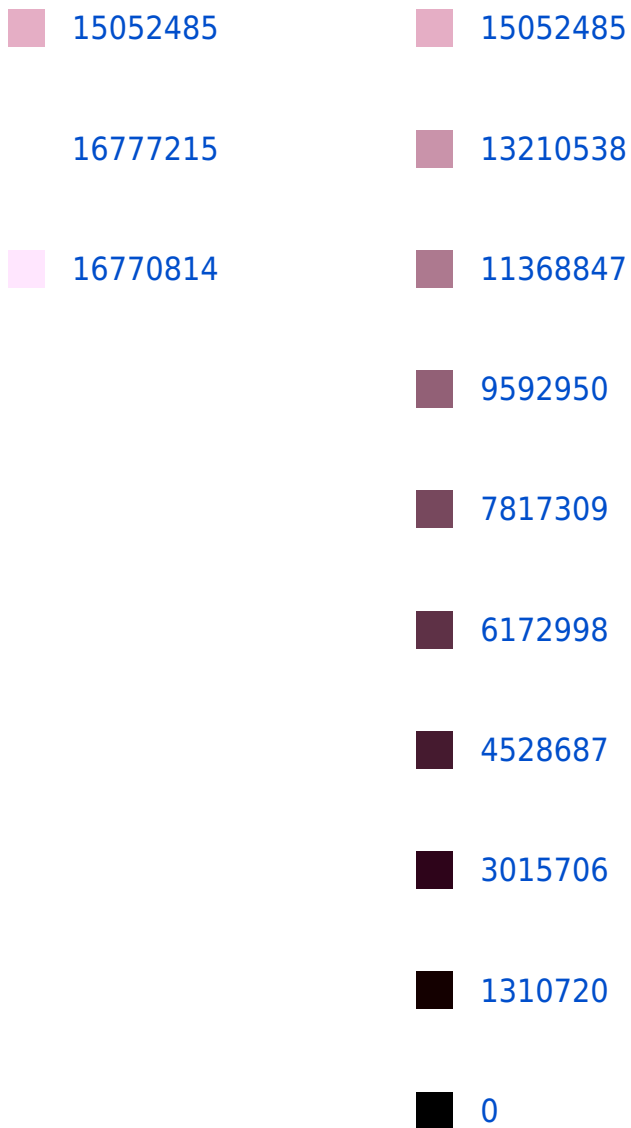


- Cyan (10%)
- Magenta (32%)
- Yellow (23%)

Brightness & Saturation Gradients

These gradients show how the Decimal color 15052485 changes by changing the brightness by 10 percent. The first figure shows a shift by +10% for each color and the second figure -10%.

Similar to the brightness gradients but the following saturation gradients show a change of the Decimal color 15052485 by changing the saturation by 10% instead.



 15052485

 15052485

 15046584

 15058386

 15040682

 15064288

 15034781

 15070189

 15028880

 15073274

 15022978

 15073279

 15017333

 15011432

 15007840

Harmonies

Analogous

The Analogous color harmony consists of three colors that are next to each other on the color wheel.



13874137



15052485



15445679

Triad

The Triadic color harmony groups three colors that are evenly spaced from another and form a triangle on the color wheel.



15052485



12501396



8701919

Complementary

The Complementary color scheme is a pair of colors which are on the opposite of each other on the color wheel.



15052485



11462094

Split Complementary

Split-complementary colors differ from the complementary color scheme. The scheme consists of three colors, the original color and two neighbors of the complement color.



8440524



15052485



10798753

Square

The Square scheme is like the rectangle color scheme, but the four colors are evenly spaced on the color wheel.



15052485



13941138



9292213



10142184

Rectangle

The Rectangle color scheme consists of four colors that form a rectangle on the color wheel.



15052485



15249569



9292213



8440025

Sweetspot

The Sweet Spot groups the original color and five complimentary colors.



15052485



16772597



13479653



8418682



0



8421504

Same Dimension

The Same Dimension uses a secret algorithm to generate beautiful new colors.



15052485



16758228



15053486



7563116



11731019



3342357

Inverse Universe

The Inverse Universe completely reimagines the original color for something new.



15052485



16758228



11461093



7563116



11731019



3342357

Previews

White Background



This preview shows how the Decimal color 15052485 looks on a white background.

Color Contrast Check

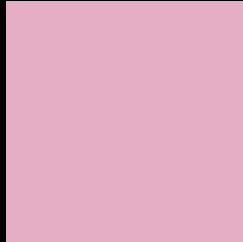
Large Text (above 18pt) WCAG AA × Fail

Any Text WCAG AA × Fail

Large Text (above 18pt) WCAG AAA × Fail

Any Text WCAG AAA × Fail

Black Background



This preview shows how the Decimal color 15052485 looks on a black background.

Color Contrast Check

Large Text (above 18pt) WCAG AA ✓ Pass

Any Text WCAG AA ✓ Pass

Large Text (above 18pt) WCAG AAA ✓ Pass

Any Text WCAG AAA ✓ Pass

If you want to check with other color combinations, try the [Color Contrast Checker](#).

Decimal 15052485 Background



This preview shows how black text looks on a background with the Decimal color 15052485.




This preview shows how white text looks on a background with the Decimal color 15052485.

Color Blindness Simulation

Color vision deficiency is a very complex topic, and I could not describe the different causes any better than Wikipedia does, so if you want to learn more, you should check out their [article about color blindness](#).

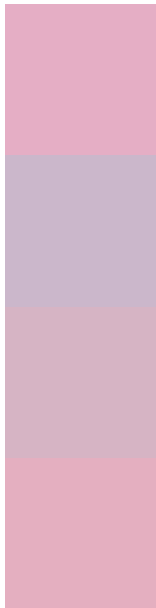
Dichromacy





Tritanopia
14987197

Trichromacy



Original Color
15052485

Protanomaly
13350859

Deuteranomaly
14070980

Tritanomaly
14987200

Monochromacy



Original Color
15052485

Achromatopsia
12698049

Achromatomaly
13548226

CSS Examples

Text

The CSS property to change the color of the text to Decimal 15052485 is called "color". The color property can be set on classes, ids or directly on the HTML element.

This example shows how text in the color #E5AEC5 looks like.

```
.text, #text, p{  
    color:#E5AEC5  
}
```

If you want to add a text shadow in that color use the text-shadow property, you can generate a text shadow directly with our [CSS Text Shadow Generator](#).

Here you see how black text with a 4 pixel #E5AEC5 colored shadow looks like.

```
.shadow{ text-shadow: 4px 4px 2px #E5AEC5
}
```

Border

The CSS property to change the border of an element to Decimal 15052485 is called "border". The border property can be set on classes, ids or directly on the HTML element.

This example shows the color as border, it can be applied via the CSS property "border" or "border-color".

```
.border, #border, table{ border:4px solid
#E5AEC5 }
```

If only the border color should be changed use the property `border-color`.

```
.border{ border-color:#E5AEC5 }
```

If you want to add a box shadow in that color use:

Here you see how a box with a 4 pixel #E5AEC5 colored shadow looks like.

```
.boxshadow{ -moz-box-shadow:4px 4px 4px  
4px #E5AEC5; -webkit-box-shadow:4px 4px  
4px 4px #E5AEC5; box-shadow:4px 4px 4px  
4px #E5AEC5 }
```

Background

The CSS property to change the background color of an element to Decimal 15052485 is called "background". The background property can be set on classes, ids or directly on the HTML element.

```
.background, #background, body{  
background:#E5AEC5 }
```

If only the background color should be changed can be used:

```
.background{ background-color:#E5AEC5 }
```

This example shows the color as background, it is applied via the CSS property "background".

To optimize and compress your CSS code, you can use our [online CSS compressor and optimizer](#) based on csstidy. If you want to create a linear or radial gradient as background or border, check our [CSS Gradient Generator](#).

Hey! You found this booklet interesting? Support Converting Colors with the new Membership Option!

The pro membership hides all ads, plus gives you double the colors in the color bucket, and more awesome pro features!

[Learn more, Memberships starting at \\$2.50/m!](#)

**Follow me
on Twitter!**

@ConvertingColor