

Converting Colors

Decimal(15056066)

Have a look what the booklet for
Decimal(15056066) contains.

Decimal(15056066)	3
<i>Conversions</i>	4
<i>Details</i>	6
<i>Harmonies</i>	11
<i>Previews</i>	23
<i>Color Blindness Simulation</i>	26
<i>CSS Examples</i>	29

Color

Decimal(15056066)

Conversions

Conversions Part 1

Format	Color
Hex	E5BCC2
RGB	229, 188, 194
RGB Percent	90%, 74%, 76%
CMY	0.1020, 0.2627, 0.2392
CMYK	0.00, 0.18, 0.15, 0.10
HSL	351°, 44%, 82%
HSV	351°, 18%, 90%
XYZ	60.0339, 56.5195, 58.7842
YIQ	200.9430, 22.5100, 10.5580

Conversions

Conversions Part 2

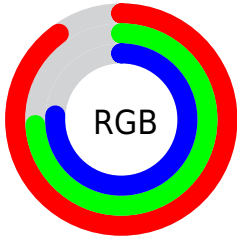
Format	Color
R _Y B	229, 188, 194
Decimal	15056066
CIE Lab	79.91, 15.60, 2.51
CIE LCh	80, 15.800, 9.127
Yxy	56.5195, 0.3424, 0.3223
Android (android.graphics.Color)	4293246146 (0xFFE5BCC2)
YUV	200.9430, -3.4229, 24.6060
Hunter-Lab	75.1794, 10.9757, 6.2657

Details

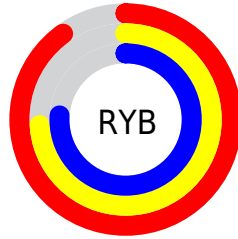
The Decimal color **15056066** is a light color, and the websafe version is hex **FFCCCC**. A complement of this color would be **12379615**, and the grayscale version is **13224393**.

A 20% lighter version of the original color is **16774394**, and **11372428** is the 20% darker color. If you saturate the color by 10%, you get **15050158**, and if you desaturate by 10%, it is **15061974**.

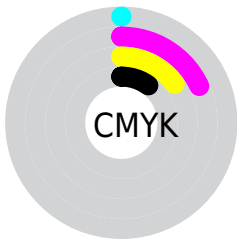
Distribution



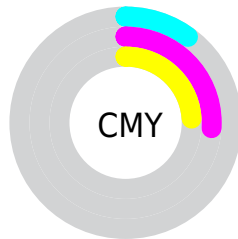
- Red (90%)
- Green (74%)
- Blue (76%)



- Red (90%)
- Yellow (74%)
- Blue (76%)



- Cyan (0%)
- Magenta (18%)
- Yellow (15%)
- Black (10%)



- Cyan (10%)
- Magenta (26%)
- Yellow (24%)

Brightness & Saturation Gradients

These gradients show how the Decimal color 15056066 changes by changing the brightness by 10 percent. The first figure shows a shift by +10% for each color and the second figure -10%.

Similar to the brightness gradients but the following saturation gradients show a change of the Decimal color 15056066 by changing the saturation by 10% instead.

 15056066

 15056066

16777215

 13214119

 16774394

 11372428

 9596275

 7886170

 6241603

 4597549

 3084824

 1900545

 0

 15056066

 15056066

 15050158

 15061974

 15044251

 15067881

 15038343

 15073277

 15032436

 15073279

 15026784

 15020877

 15014969

 15009062

 15007778

Harmonies

Analogous

The Analogous color harmony consists of three colors that are next to each other on the color wheel.



14532049



15056066



14991028

Triad

The Triadic color harmony groups three colors that are evenly spaced from another and form a triangle on the color wheel.



15056066



12372911



11258593

Complementary

The Complementary color scheme is a pair of colors which are on the opposite of each other on the color wheel.



15056066



12379615

Split Complementary

Split-complementary colors differ from the complementary color scheme. The scheme consists of three colors, the original color and two neighbors of the complement color.



10604248



15056066



11390651

Square

The Square scheme is like the rectangle color scheme, but the four colors are evenly spaced on the color wheel.



15056066



13485993



10670026



12371683

Rectangle

The Rectangle color scheme consists of four colors that form a rectangle on the color wheel.



15056066



14663853



10670026



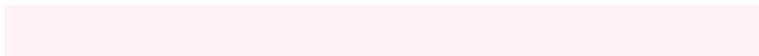
10931423

Sweetspot

The Sweet Spot groups the original color and five complimentary colors.



15056066



16773876



14662885



8419449



0



8421504

Same Dimension

The Same Dimension uses a secret algorithm to generate beautiful new colors.



15056066



16763345



15059644



7563113



11730970



3342343

Inverse Universe

The Inverse Universe completely reimagines the original color for something new.



15056066



16763345



12376037



7563113



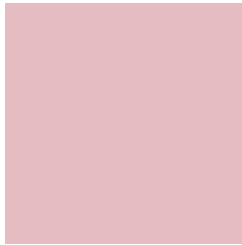
11730970



3342343

Previews

White Background



This preview shows how the Decimal color 15056066 looks on a white background.

Color Contrast Check

Large Text (above 18pt) WCAG AA × Fail

Any Text WCAG AA × Fail

Large Text (above 18pt) WCAG AAA × Fail

Any Text WCAG AAA × Fail

Black Background



This preview shows how the Decimal color 15056066 looks on a black background.

Color Contrast Check

Large Text (above 18pt) WCAG AA ✓ Pass

Any Text WCAG AA ✓ Pass

Large Text (above 18pt) WCAG AAA ✓ Pass

Any Text WCAG AAA ✓ Pass

If you want to check with other color combinations, try the [Color Contrast Checker](#).

Decimal 15056066 Background



This preview shows how black text looks on a background with the Decimal color 15056066.




This preview shows how white text looks on a background with the Decimal color 15056066.

Color Blindness Simulation

Color vision deficiency is a very complex topic, and I could not describe the different causes any better than Wikipedia does, so if you want to learn more, you should check out their [article about color blindness](#).

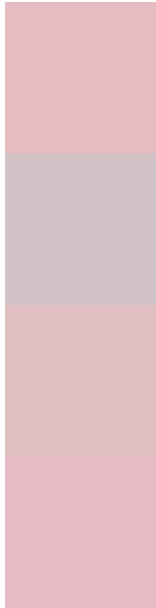
Dichromacy





Tritanopia
15121353

Trichromacy



Original Color
15056066

Protanomaly
13877957

Deuteranomaly
14663617

Tritanomaly
15121350

Monochromacy



Original Color
15056066

Achromatopsia
13224393

Achromatomaly
13878470

CSS Examples

Text

The CSS property to change the color of the text to Decimal 15056066 is called "color". The color property can be set on classes, ids or directly on the HTML element.

This example shows how text in the color #E5BCC2 looks like.

```
.text, #text, p{  
    color:#E5BCC2  
}
```

If you want to add a text shadow in that color use the text-shadow property, you can generate a text shadow directly with our [CSS Text Shadow Generator](#).

Here you see how black text with a 4 pixel #E5BCC2 colored shadow looks like.

```
.shadow{ text-shadow: 4px 4px 2px #E5BCC2
}
```

Border

The CSS property to change the border of an element to Decimal 15056066 is called "border". The border property can be set on classes, ids or directly on the HTML element.

This example shows the color as border, it can be applied via the CSS property "border" or "border-color".

```
.border, #border, table{ border:4px solid
#E5BCC2 }
```

If only the border color should be changed use the property `border-color`.

```
.border{ border-color:#E5BCC2 }
```

If you want to add a box shadow in that color use:

Here you see how a box with a 4 pixel #E5BCC2 colored shadow looks like.

```
.boxshadow{ -moz-box-shadow:4px 4px 4px  
4px #E5BCC2; -webkit-box-shadow:4px 4px  
4px 4px #E5BCC2; box-shadow:4px 4px 4px  
4px #E5BCC2 }
```

Background

The CSS property to change the background color of an element to Decimal 15056066 is called "background". The background property can be set on classes, ids or directly on the HTML element.

```
.background, #background, body{  
background:#E5BCC2 }
```

If only the background color should be changed can be used:

```
.background{ background-color:#E5BCC2 }
```

This example shows the color as background, it is applied via the CSS property "background".

To optimize and compress your CSS code, you can use our [online CSS compressor and optimizer](#) based on csstidy. If you want to create a linear or radial gradient as background or border, check our [CSS Gradient Generator](#).

Hey! You found this booklet interesting? Support Converting Colors with the new Membership Option!

The pro membership hides all ads, plus gives you double the colors in the color bucket, and more awesome pro features!

[Learn more, Memberships starting at \\$2.50/m!](#)

**Follow me
on Twitter!**

@ConvertingColor