

Converting Colors

Decimal(15058377)

Have a look what the booklet for
Decimal(15058377) contains.

Decimal(15058377)	3
<i>Conversions</i>	4
<i>Details</i>	6
<i>Harmonies</i>	11
<i>Previews</i>	23
<i>Color Blindness Simulation</i>	26
<i>CSS Examples</i>	29

Color

Decimal(15058377)

Conversions

Conversions Part 1

Format	Color
Hex	E5C5C9
RGB	229, 197, 201
RGB Percent	90%, 77%, 79%
CMY	0.1020, 0.2275, 0.2118
CMYK	0.00, 0.14, 0.12, 0.10
HSL	352°, 38%, 84%
HSV	352°, 14%, 90%
XYZ	62.8220, 60.8076, 63.6843
YIQ	207.0240, 17.7880, 8.0280

Conversions

Conversions Part 2

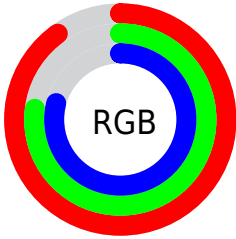
Format	Color
RYB	229, 197, 201
Decimal	15058377
CIELab	82.28, 11.94, 2.18
CIElCh	82, 12.137, 10.355
Yxy	60.8076, 0.3354, 0.3246
Android (android.graphics.Color)	4293248457 (0xFFE5C5C9)
YUV	207.0240, -2.9698, 19.2730
Hunter-Lab	77.9792, 7.3404, 6.1643

Details

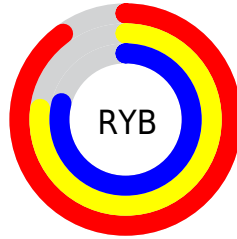
The Decimal color **15058377** is a light color, and the websafe version is hex **FFCCCC**. A complement of this color would be **12969441**, and the grayscale version is **13619151**.

A 20% lighter version of the original color is **16776959**, and **11374483** is the 20% darker color. If you saturate the color by 10%, you get **15052469**, and if you desaturate by 10%, it is **15064285**.

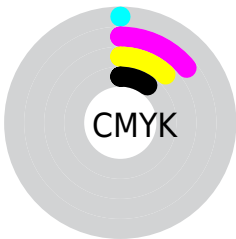
Distribution



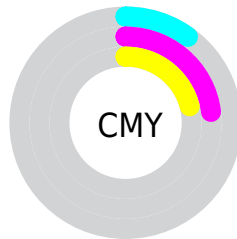
- Red (90%)
- Green (77%)
- Blue (79%)



- Red (90%)
- Yellow (77%)
- Blue (79%)



- Cyan (0%)
- Magenta (14%)
- Yellow (12%)
- Black (10%)



- Cyan (10%)
- Magenta (23%)
- Yellow (21%)

Brightness & Saturation Gradients

These gradients show how the Decimal color 15058377 changes by changing the brightness by 10 percent. The first figure shows a shift by +10% for each color and the second figure -10%.

Similar to the brightness gradients but the following saturation gradients show a change of the Decimal color 15058377 by changing the saturation by 10% instead.



 15058377

 15058377

 15052469

 15064285

 15046561

 15070193

 15040653

 15073279

 15034745

 15029093

 15023185

 15017277

 15011369

 15007773

Harmonies

Analogous

The Analogous color harmony consists of three colors that are next to each other on the color wheel.



14665429



15058377



14993086

Triad

The Triadic color harmony groups three colors that are evenly spaced from another and form a triangle on the color wheel.



15058377



12964283



12177634

Complementary

The Complementary color scheme is a pair of colors which are on the opposite of each other on the color wheel.



15058377



12969441

Split Complementary

Split-complementary colors differ from the complementary color scheme. The scheme consists of three colors, the original color and two neighbors of the complement color.



11654107



15058377



12178373

Square

The Square scheme is like the rectangle color scheme, but the four colors are evenly spaced on the color wheel.



15058377



13815222



11654352



13028579

Rectangle

The Rectangle color scheme consists of four colors that form a rectangle on the color wheel.



15058377



14731449



11654352



11915744

Sweetspot

The Sweet Spot groups the original color and five complimentary colors.



15058377



16774646



14796261



8419706



0



8421504

Same Dimension

The Same Dimension uses a secret algorithm to generate beautiful new colors.



15058377



16766169



15061445



7563113



11730966



3342342

Inverse Universe

The Inverse Universe completely reimagines the original color for something new.



15058377



16766169



12966373



7563113



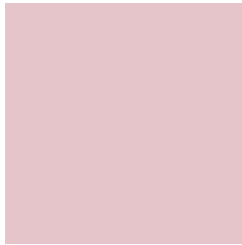
11730966



3342342

Previews

White Background



This preview shows how the Decimal color 15058377 looks on a white background.

Color Contrast Check

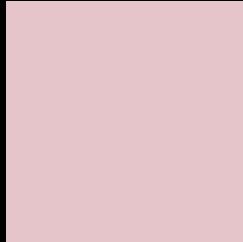
Large Text (above 18pt) WCAG AA × Fail

Any Text WCAG AA × Fail

Large Text (above 18pt) WCAG AAA × Fail

Any Text WCAG AAA × Fail

Black Background



This preview shows how the Decimal color 15058377 looks on a black background.

Color Contrast Check

Large Text (above 18pt) WCAG AA ✓ Pass

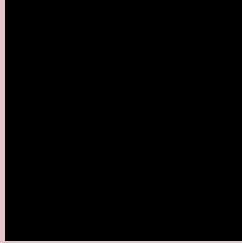
Any Text WCAG AA ✓ Pass

Large Text (above 18pt) WCAG AAA ✓ Pass

Any Text WCAG AAA ✓ Pass

If you want to check with other color combinations, try the [Color Contrast Checker](#).

Decimal 15058377 Background



This preview shows how black text looks on a background with the Decimal color 15058377.




This preview shows how white text looks on a background with the Decimal color 15058377.

Color Blindness Simulation

Color vision deficiency is a very complex topic, and I could not describe the different causes any better than Wikipedia does, so if you want to learn more, you should check out their [article about color blindness](#).

Dichromacy





Tritanopia
15123411

Trichromacy



Original Color
15058377

Protanomaly
14207436

Deuteranomaly
14927561

Tritanomaly
15123663

Monochromacy



Original Color
15058377

Achromatopsia
13619151

Achromatomaly
14142413

CSS Examples

Text

The CSS property to change the color of the text to Decimal 15058377 is called "color". The color property can be set on classes, ids or directly on the HTML element.

This example shows how text in the color #E5C5C9 looks like.

```
.text, #text, p{  
    color:#E5C5C9  
}
```

If you want to add a text shadow in that color use the text-shadow property, you can generate a text shadow directly with our [CSS Text Shadow Generator](#).

Here you see how black text with a 4 pixel #E5C5C9 colored shadow looks like.

```
.shadow{ text-shadow: 4px 4px 2px #E5C5C9
}
```

Border

The CSS property to change the border of an element to Decimal 15058377 is called "border". The border property can be set on classes, ids or directly on the HTML element.

This example shows the color as border, it can be applied via the CSS property "border" or "border-color".

```
.border, #border, table{ border:4px solid
#E5C5C9 }
```

If only the border color should be changed use the property `border-color`.

```
.border{ border-color:#E5C5C9 }
```

If you want to add a box shadow in that color use:

Here you see how a box with a 4 pixel #E5C5C9 colored shadow looks like.

```
.boxshadow{ -moz-box-shadow:4px 4px 4px  
4px #E5C5C9; -webkit-box-shadow:4px 4px  
4px 4px #E5C5C9; box-shadow:4px 4px 4px  
4px #E5C5C9 }
```

Background

The CSS property to change the background color of an element to Decimal 15058377 is called "background". The background property can be set on classes, ids or directly on the HTML element.

```
.background, #background, body{  
background:#E5C5C9 }
```

If only the background color should be changed can be used:

```
.background{ background-color:#E5C5C9 }
```

This example shows the color as background, it is applied via the CSS property "background".

To optimize and compress your CSS code, you can use our [online CSS compressor and optimizer](#) based on csstidy. If you want to create a linear or radial gradient as background or border, check our [CSS Gradient Generator](#).

Hey! You found this booklet interesting? Support Converting Colors with the new Membership Option!

The pro membership hides all ads, plus gives you double the colors in the color bucket, and more awesome pro features!

[Learn more, Memberships starting at \\$2.50/m!](#)

**Follow me
on Twitter!**

@ConvertingColor