

Converting Colors

Decimal(15058628)

Have a look what the booklet for
Decimal(15058628) contains.

Decimal(15058628)	3
<i>Conversions</i>	4
<i>Details</i>	6
<i>Harmonies</i>	11
<i>Previews</i>	23
<i>Color Blindness Simulation</i>	26
<i>CSS Examples</i>	29

Color

Decimal(15058628)

Conversions

Conversions Part 1

Format	Color
Hex	E5C6C4
RGB	229, 198, 196
RGB Percent	90%, 78%, 77%
CMY	0.1020, 0.2235, 0.2314
CMYK	0.00, 0.14, 0.14, 0.10
HSL	4°, 39%, 83%
HSV	4°, 14%, 90%
XYZ	62.4710, 61.0317, 60.7123
YIQ	207.0410, 19.1180, 5.9500

Conversions

Conversions Part 2

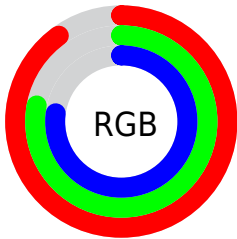
Format	Color
R _Y B	229, 198, 196
Decimal	15058628
CIE Lab	82.40, 10.61, 5.03
CIE LCh	82, 11.741, 25.384
Yxy	61.0317, 0.3391, 0.3313
Android (android.graphics.Color)	4293248708 (0xFFE5C6C4)
YUV	207.0410, -5.4432, 19.2580
Hunter-Lab	78.1228, 6.0229, 8.6094

Details

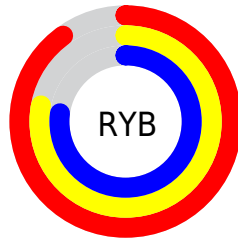
The Decimal color **15058628** is a light color, and the websafe version is hex **FFCCCC**. A complement of this color would be **12903397**, and the grayscale version is **13619151**.

A 20% lighter version of the original color is **16777213**, and **11374734** is the 20% darker color. If you saturate the color by 10%, you get **15052973**, and if you desaturate by 10%, it is **15064283**.

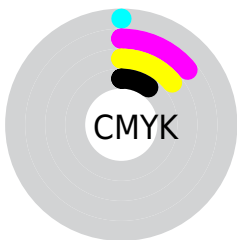
Distribution



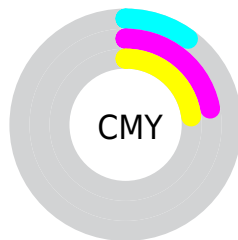
- Red (90%)
- Green (78%)
- Blue (77%)



- Red (90%)
- Yellow (78%)
- Blue (77%)



- Cyan (0%)
- Magenta (14%)
- Yellow (14%)
- Black (10%)



- Cyan (10%)
- Magenta (22%)
- Yellow (23%)

Brightness & Saturation Gradients

These gradients show how the Decimal color 15058628 changes by changing the brightness by 10 percent. The first figure shows a shift by +10% for each color and the second figure -10%.

Similar to the brightness gradients but the following saturation gradients show a change of the Decimal color 15058628 by changing the saturation by 10% instead.

15058628

15058628

16777215

13216681

16777213

11374734

9598581

7888476

6243909

4665390

3152666

1900544

0

 15058628

 15058628

 15052973

 15064283

 15047574

 15069682

 15041919

 15073279

 15036520

 15030866

 15025467

 15019812

 15014413

 15011328

Harmonies

Analogous

The Analogous color harmony consists of three colors that are next to each other on the color wheel.



14927567



15058628



14796987

Triad

The Triadic color harmony groups three colors that are evenly spaced from another and form a triangle on the color wheel.



15058628



12571328



12635875

Complementary

The Complementary color scheme is a pair of colors which are on the opposite of each other on the color wheel.



15058628



12903397

Split Complementary

Split-complementary colors differ from the complementary color scheme. The scheme consists of three colors, the original color and two neighbors of the complement color.



11915999



15058628



11916491

Square

The Square scheme is like the rectangle color scheme, but the four colors are evenly spaced on the color wheel.



15058628



13422521



11654102



13487073

Rectangle

The Rectangle color scheme consists of four colors that form a rectangle on the color wheel.



15058628



14469816



11654102



12374242

Sweetspot

The Sweet Spot groups the original color and five complimentary colors.



15058628



16774645



15058147



8419961



0



8421504

Same Dimension

The Same Dimension uses a secret algorithm to generate beautiful new colors.



15058628



16766676



15062724



7563367



11733760



3343104

Inverse Universe

The Inverse Universe completely reimagines the original color for something new.



12903397



13958399



12899301



6779507



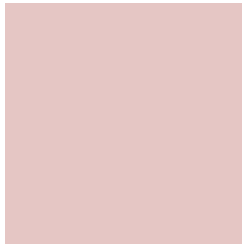
43187



12339

Previews

White Background



This preview shows how the Decimal color 15058628 looks on a white background.

Color Contrast Check

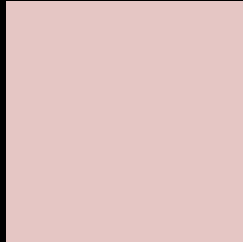
Large Text (above 18pt) WCAG AA × Fail

Any Text WCAG AA × Fail

Large Text (above 18pt) WCAG AAA × Fail

Any Text WCAG AAA × Fail

Black Background



This preview shows how the Decimal color 15058628 looks on a black background.

Color Contrast Check

Large Text (above 18pt) WCAG AA ✓ Pass

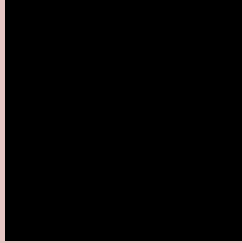
Any Text WCAG AA ✓ Pass

Large Text (above 18pt) WCAG AAA ✓ Pass

Any Text WCAG AAA ✓ Pass

If you want to check with other color combinations, try the [Color Contrast Checker](#).

Decimal 15058628 Background



This preview shows how black text looks on a background with the Decimal color 15058628.




This preview shows how white text looks on a background with the Decimal color 15058628.

Color Blindness Simulation

Color vision deficiency is a very complex topic, and I could not describe the different causes any better than Wikipedia does, so if you want to learn more, you should check out their [article about color blindness](#).

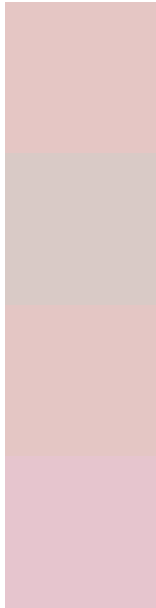
Dichromacy





Tritanopia
15189203

Trichromacy



Original Color
15058628

Protanomaly
14273222

Deuteranomaly
14993092

Tritanomaly
15123918

Monochromacy



Original Color
15058628

Achromatopsia
13619151

Achromatomaly
14142667

CSS Examples

Text

The CSS property to change the color of the text to Decimal 15058628 is called "color". The color property can be set on classes, ids or directly on the HTML element.

This example shows how text in the color #E5C6C4 looks like.

```
.text, #text, p{  
    color:#E5C6C4  
}
```

If you want to add a text shadow in that color use the text-shadow property, you can generate a text shadow directly with our [CSS Text Shadow Generator](#).

Here you see how black text with a 4 pixel #E5C6C4 colored shadow looks like.

```
.shadow{ text-shadow: 4px 4px 2px #E5C6C4
}
```

Border

The CSS property to change the border of an element to Decimal 15058628 is called "border". The border property can be set on classes, ids or directly on the HTML element.

This example shows the color as border, it can be applied via the CSS property "border" or "border-color".

```
.border, #border, table{ border:4px solid
#E5C6C4 }
```

If only the border color should be changed use the property `border-color`.

```
.border{ border-color:#E5C6C4 }
```

If you want to add a box shadow in that color use:

Here you see how a box with a 4 pixel #E5C6C4 colored shadow looks like.

```
.boxshadow{ -moz-box-shadow:4px 4px 4px  
4px #E5C6C4; -webkit-box-shadow:4px 4px  
4px 4px #E5C6C4; box-shadow:4px 4px 4px  
4px #E5C6C4 }
```

Background

The CSS property to change the background color of an element to Decimal 15058628 is called "background". The background property can be set on classes, ids or directly on the HTML element.

```
.background, #background, body{  
background:#E5C6C4 }
```

If only the background color should be changed can be used:

```
.background{ background-color:#E5C6C4 }
```

This example shows the color as background, it is applied via the CSS property "background".

To optimize and compress your CSS code, you can use our [online CSS compressor and optimizer](#) based on csstidy. If you want to create a linear or radial gradient as background or border, check our [CSS Gradient Generator](#).

Hey! You found this booklet interesting? Support Converting Colors with the new Membership Option!

The pro membership hides all ads, plus gives you double the colors in the color bucket, and more awesome pro features!

[Learn more, Memberships starting at \\$2.50/m!](#)

**Follow me
on Twitter!**

@ConvertingColor