

Converting Colors

Decimal(15058875)

Have a look what the booklet for
Decimal(15058875) contains.

Decimal(15058875)	3
<i>Conversions</i>	4
<i>Details</i>	6
<i>Harmonies</i>	11
<i>Previews</i>	23
<i>Color Blindness Simulation</i>	26
<i>CSS Examples</i>	29

Color

Decimal(15058875)

Conversions

Conversions Part 1

Format	Color
Hex	E5C7BB
RGB	229, 199, 187
RGB Percent	90%, 78%, 73%
CMY	0.1020, 0.2196, 0.2667
CMYK	0.00, 0.13, 0.18, 0.10
HSL	17°, 45%, 82%
HSV	17°, 18%, 90%
XYZ	61.7062, 61.0927, 55.5535
YIQ	206.6020, 21.7320, 2.6280

Conversions

Conversions Part 2

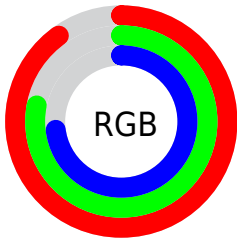
Format	Color
R _Y B	229, 204, 187
Decimal	15058875
CIE Lab	82.43, 8.68, 9.89
CIE LCh	82, 13.162, 48.715
Yxy	61.0927, 0.3460, 0.3425
Android (android.graphics.Color)	4293248955 (0xFFE5C7BB)
YUV	206.6020, -9.6638, 19.6430
Hunter-Lab	78.1618, 4.1366, 12.5729

Details

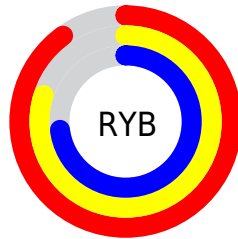
The Decimal color **15058875** is a light color, and the websafe version is hex **FFCCCC**. A complement of this color would be **12311013**, and the grayscale version is **13619151**.

A 20% lighter version of the original color is **16777203**, and **11374982** is the 20% darker color. If you saturate the color by 10%, you get **15054756**, and if you desaturate by 10%, it is **15062994**.

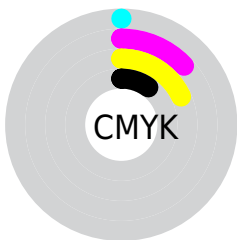
Distribution



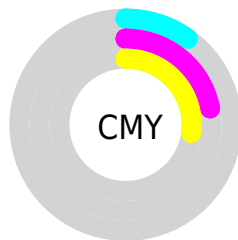
- Red (90%)
- Green (78%)
- Blue (73%)



- Red (90%)
- Yellow (80%)
- Blue (73%)



- Cyan (0%)
- Magenta (13%)
- Yellow (18%)
- Black (10%)



- Cyan (10%)
- Magenta (22%)
- Yellow (27%)

Brightness & Saturation Gradients

These gradients show how the Decimal color 15058875 changes by changing the brightness by 10 percent. The first figure shows a shift by +10% for each color and the second figure -10%.

Similar to the brightness gradients but the following saturation gradients show a change of the Decimal color 15058875 by changing the saturation by 10% instead.

 15058875

 15058875

16777215

 13216928

 16777203

 11374982


 9598829

 7888724

 6244157

 4665639

 3152915

 1769984

 0

15058875

15058875

15054756

15062994

15050381

15067369

15046262

15071487

15042143

15073279

15037768

15033650

15029531

15025156

15024384

Harmonies

Analogous

The Analogous color harmony consists of three colors that are next to each other on the color wheel.



15254982



15058875



14470069

Triad

The Triadic color harmony groups three colors that are evenly spaced from another and form a triangle on the color wheel.



15058875



11850952



13290724

Complementary

The Complementary color scheme is a pair of colors which are on the opposite of each other on the color wheel.



15058875



12311013

Split Complementary

Split-complementary colors differ from the complementary color scheme. The scheme consists of three colors, the original color and two neighbors of the complement color.



12308709



15058875



11457748

Square

The Square scheme is like the rectangle color scheme, but the four colors are evenly spaced on the color wheel.



15058875



12702397



11588575



14272733

Rectangle

The Rectangle color scheme consists of four colors that form a rectangle on the color wheel.



15058875



13946293



11588575



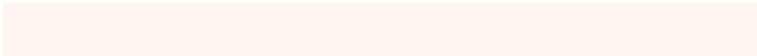
12963301

Sweetspot

The Sweet Spot groups the original color and five complimentary colors.



15058875



16774384



15055833



8419703



0



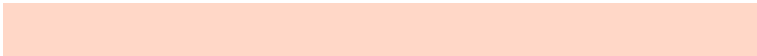
8421504

Same Dimension

The Same Dimension uses a secret algorithm to generate beautiful new colors.



15058875



16766919



15064251



7564135



11744000



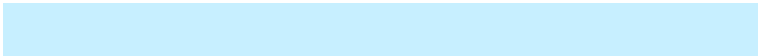
3346176

Inverse Universe

The Inverse Universe completely reimagines the original color for something new.



12311013



13103103



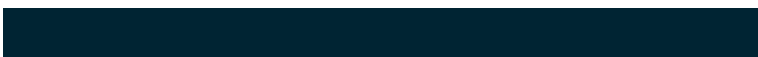
12305637



6778739



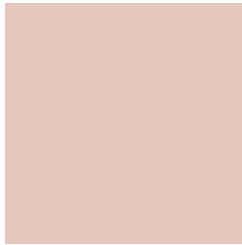
32691



9267

Previews

White Background



This preview shows how the Decimal color 15058875 looks on a white background.

Color Contrast Check

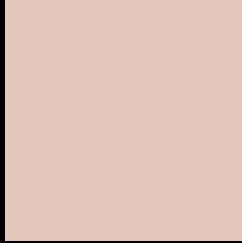
Large Text (above 18pt) WCAG AA × Fail

Any Text WCAG AA × Fail

Large Text (above 18pt) WCAG AAA × Fail

Any Text WCAG AAA × Fail

Black Background



This preview shows how the Decimal color 15058875 looks on a black background.

Color Contrast Check

Large Text (above 18pt) WCAG AA ✓ Pass

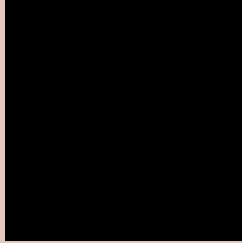
Any Text WCAG AA ✓ Pass

Large Text (above 18pt) WCAG AAA ✓ Pass

Any Text WCAG AAA ✓ Pass

If you want to check with other color combinations, try the [Color Contrast Checker](#).

Decimal 15058875 Background



This preview shows how black text looks on a background with the Decimal color 15058875.




This preview shows how white text looks on a background with the Decimal color 15058875.

Color Blindness Simulation

Color vision deficiency is a very complex topic, and I could not describe the different causes any better than Wikipedia does, so if you want to learn more, you should check out their [article about color blindness](#).

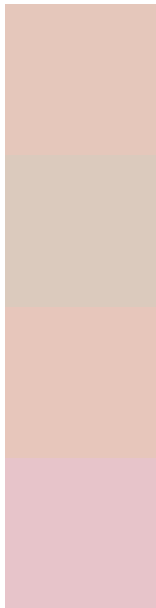
Dichromacy





Tritanopia
15254483

Trichromacy



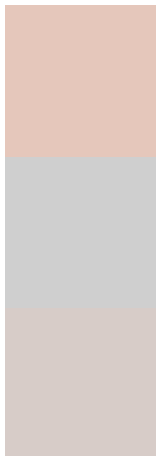
Original Color
15058875

Protanomaly
14404285

Deuteranomaly
15189691

Tritanomaly
15189194

Monochromacy



Original Color
15058875

Achromatopsia
13619151

Achromatomaly
14142664

CSS Examples

Text

The CSS property to change the color of the text to Decimal 15058875 is called "color". The color property can be set on classes, ids or directly on the HTML element.

This example shows how text in the color #E5C7BB looks like.

```
.text, #text, p{  
    color:#E5C7BB  
}
```

If you want to add a text shadow in that color use the text-shadow property, you can generate a text shadow directly with our [CSS Text Shadow Generator](#).

Here you see how black text with a 4 pixel #E5C7BB colored shadow looks like.

```
.shadow{ text-shadow: 4px 4px 2px #E5C7BB
}
```

Border

The CSS property to change the border of an element to Decimal 15058875 is called "border". The border property can be set on classes, ids or directly on the HTML element.

This example shows the color as border, it can be applied via the CSS property "border" or "border-color".

```
.border, #border, table{ border:4px solid
#E5C7BB }
```

If only the border color should be changed use the property `border-color`.

```
.border{ border-color:#E5C7BB }
```

If you want to add a box shadow in that color use:

Here you see how a box with a 4 pixel #E5C7BB colored shadow looks like.

```
.boxshadow{ -moz-box-shadow:4px 4px 4px  
4px #E5C7BB; -webkit-box-shadow:4px 4px  
4px 4px #E5C7BB; box-shadow:4px 4px 4px  
4px #E5C7BB }
```

Background

The CSS property to change the background color of an element to Decimal 15058875 is called "background". The background property can be set on classes, ids or directly on the HTML element.

```
.background, #background, body{  
background:#E5C7BB }
```

If only the background color should be changed can be used:

```
.background{ background-color:#E5C7BB }
```

This example shows the color as background, it is applied via the CSS property "background".

To optimize and compress your CSS code, you can use our [online CSS compressor and optimizer](#) based on csstidy. If you want to create a linear or radial gradient as background or border, check our [CSS Gradient Generator](#).

Hey! You found this booklet interesting? Support Converting Colors with the new Membership Option!

The pro membership hides all ads, plus gives you double the colors in the color bucket, and more awesome pro features!

[Learn more, Memberships starting at \\$2.50/m!](#)

**Follow me
on Twitter!**

@ConvertingColor