

# Converting Colors

Decimal(15058885)

Have a look what the booklet for  
Decimal(15058885) contains.

<b>Decimal(15058885)</b> .....	3
<i><b>Conversions</b></i> .....	4
<i><b>Details</b></i> .....	6
<i><b>Harmonies</b></i> .....	11
<i><b>Previews</b></i> .....	23
<i><b>Color Blindness Simulation</b></i> .....	26
<i><b>CSS Examples</b></i> .....	29

# **Color**

**Decimal(15058885)**

# Conversions

## Conversions Part 1

Format	Color
Hex	E5C7C5
RGB	229, 199, 197
RGB Percent	90%, 78%, 77%
CMY	0.1020, 0.2196, 0.2275
CMYK	0.00, 0.13, 0.14, 0.10
HSL	4°, 38%, 84%
HSV	4°, 14%, 90%
XYZ	62.8146, 61.5361, 61.3903
YIQ	207.7420, 18.5220, 5.7380

# Conversions

## Conversions Part 2

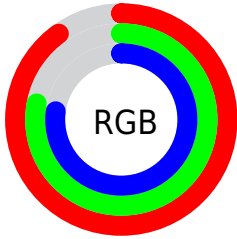
Format	Color
R <sub>Y</sub> B	229, 199, 197
Decimal	15058885
CIE Lab	82.67, 10.24, 4.89
CIE LCh	83, 11.345, 25.525
Yxy	61.5361, 0.3382, 0.3313
Android (android.graphics.Color)	4293248965 (0xFFE5C7C5)
YUV	207.7420, -5.2958, 18.6433
Hunter-Lab	78.4449, 5.6547, 8.5116

# Details

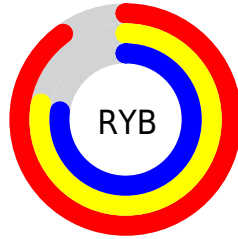
The Decimal color **15058885** is a light color, and the websafe version is hex **FFCCCC**. A complement of this color would be **12968933**, and the grayscale version is **13684944**.

A 20% lighter version of the original color is **16777214**, and **11374991** is the 20% darker color. If you saturate the color by 10%, you get **15053486**, and if you desaturate by 10%, it is **15064284**.

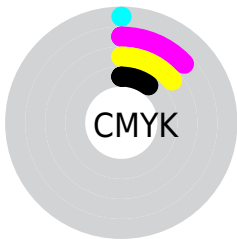
# Distribution



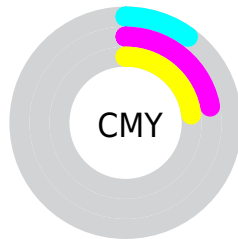
- Red (90%)
- Green (78%)
- Blue (77%)



- Red (90%)
- Yellow (78%)
- Blue (77%)



- Cyan (0%)
- Magenta (13%)
- Yellow (14%)
- Black (10%)



- Cyan (10%)
- Magenta (22%)
- Yellow (23%)

# Brightness & Saturation Gradients

These gradients show how the Decimal color 15058885 changes by changing the brightness by 10 percent. The first figure shows a shift by +10% for each color and the second figure -10%.

Similar to the brightness gradients but the following saturation gradients show a change of the Decimal color 15058885 by changing the saturation by 10% instead.





 15058885

 15058885

 15053486

 15064284

 15047831

 15069939

 15042432

 15073279

 15036777

 15031379

 15025724

 15020325

 15014670

 15011328

# Harmonies

## Analogous

The Analogous color harmony consists of three colors that are next to each other on the color wheel.



14927824



15058885



14797245

# Triad

The Triadic color harmony groups three colors that are evenly spaced from another and form a triangle on the color wheel.



15058885



12637121



12701667

# Complementary

The Complementary color scheme is a pair of colors which are on the opposite of each other on the color wheel.



15058885



12968933

# Split Complementary

Split-complementary colors differ from the complementary color scheme. The scheme consists of three colors, the original color and two neighbors of the complement color.



12047071



15058885



12047564

# Square

The Square scheme is like the rectangle color scheme, but the four colors are evenly spaced on the color wheel.



15058885



13488314



11785430



13552865

# Rectangle

The Rectangle color scheme consists of four colors that form a rectangle on the color wheel.



15058885



14470073



11785430



12439778

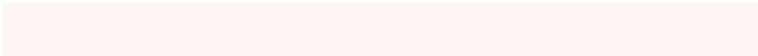


# Sweetspot

The Sweet Spot groups the original color and five complimentary colors.



15058885



16774645



15058403



8419961



0



8421504



# Same Dimension

The Same Dimension uses a secret algorithm to generate beautiful new colors.



15058885



16766676



15062981



7563367



11733760



3343104

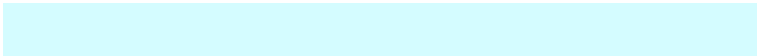


# Inverse Universe

The Inverse Universe completely reimagines the original color for something new.



12968933



13958399



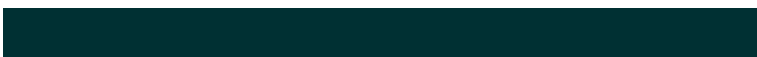
12964837



6779507



42931

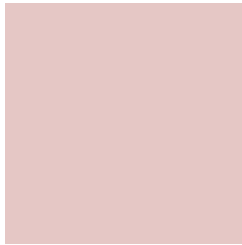


12339



# Previews

## White Background



This preview shows how the Decimal color 15058885 looks on a white background.

## Color Contrast Check

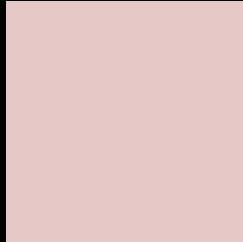
Large Text (above 18pt) WCAG AA × Fail

Any Text WCAG AA × Fail

Large Text (above 18pt) WCAG AAA × Fail

Any Text WCAG AAA × Fail

# Black Background



This preview shows how the Decimal color 15058885 looks on a black background.

## Color Contrast Check

Large Text (above 18pt) WCAG AA ✓ Pass

Any Text WCAG AA ✓ Pass

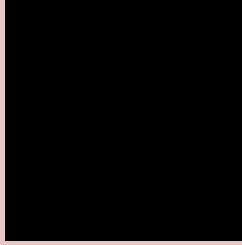
Large Text (above 18pt) WCAG AAA ✓ Pass

Any Text WCAG AAA ✓ Pass

If you want to check with other color combinations, try the [Color Contrast Checker](#).



## Decimal 15058885 Background



This preview shows how black text looks on a background with the Decimal color 15058885.




This preview shows how white text looks on a background with the Decimal color 15058885.

# Color Blindness Simulation

Color vision deficiency is a very complex topic, and I could not describe the different causes any better than Wikipedia does, so if you want to learn more, you should check out their [article about color blindness](#).

## Dichromacy





**Tritanopia**  
15189460

# Trichromacy



**Original Color**  
15058885

**Protanomaly**  
14339015

**Deuteranomaly**  
15058885

**Tritanomaly**  
15124175

# Monochromacy



**Original Color**  
15058885

**Achromatopsia**  
13684944

**Achromatomaly**  
14208460

# CSS Examples

## Text

The CSS property to change the color of the text to Decimal 15058885 is called "color". The color property can be set on classes, ids or directly on the HTML element.

This example shows how text in the color #E5C7C5 looks like.

```
.text, #text, p{  
    color:#E5C7C5  
}
```

If you want to add a text shadow in that color use the text-shadow property, you can generate a text shadow directly with our [CSS Text Shadow Generator](#).

Here you see how black text with a 4 pixel #E5C7C5 colored shadow looks like.

```
.shadow{ text-shadow: 4px 4px 2px #E5C7C5
}
```

## Border

The CSS property to change the border of an element to Decimal 15058885 is called "border". The border property can be set on classes, ids or directly on the HTML element.

This example shows the color as border, it can be applied via the CSS property "border" or "border-color".

```
.border, #border, table{ border:4px solid
#E5C7C5 }
```

If only the border color should be changed use the property `border-color`.

```
.border{ border-color:#E5C7C5 }
```

If you want to add a box shadow in that color use:

Here you see how a box with a 4 pixel #E5C7C5 colored shadow looks like.

```
.boxshadow{ -moz-box-shadow:4px 4px 4px  
4px #E5C7C5; -webkit-box-shadow:4px 4px  
4px 4px #E5C7C5; box-shadow:4px 4px 4px  
4px #E5C7C5 }
```

# Background

The CSS property to change the background color of an element to Decimal 15058885 is called "background". The background property can be set on classes, ids or directly on the HTML element.

```
.background, #background, body{  
background:#E5C7C5 }
```

If only the background color should be changed can be used:

```
.background{ background-color:#E5C7C5 }
```

This example shows the color as background, it is applied via the CSS property "background".

To optimize and compress your CSS code, you can use our [online CSS compressor and optimizer](#) based on csstidy. If you want to create a linear or radial gradient as background or border, check our [CSS Gradient Generator](#).



Hey! You found this booklet interesting? Support Converting Colors with the new Membership Option!

The pro membership hides all ads, plus gives you double the colors in the color bucket, and more awesome pro features!

**[Learn more, Memberships starting at \\$2.50/m!](#)**

**Follow me  
on Twitter!**

@ConvertingColor