

Converting Colors

Decimal(15059639)

Have a look what the booklet for
Decimal(15059639) contains.

Decimal(15059639)	3
<i>Conversions</i>	4
<i>Details</i>	6
<i>Harmonies</i>	11
<i>Previews</i>	23
<i>Color Blindness Simulation</i>	26
<i>CSS Examples</i>	29

Color

Decimal(15059639)

Conversions

Conversions Part 1

Format	Color
Hex	E5CAB7
RGB	229, 202, 183
RGB Percent	90%, 79%, 72%
CMY	0.1020, 0.2078, 0.2824
CMYK	0.00, 0.12, 0.20, 0.10
HSL	25°, 47%, 81%
HSV	25°, 20%, 90%
XYZ	61.9809, 62.3180, 53.5616
YIQ	207.9070, 22.1910, -0.1850

Conversions

Conversions Part 2

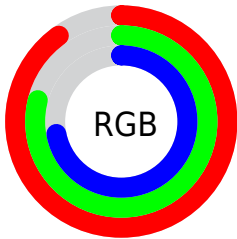
Format	Color
R _Y B	229, 215, 183
Decimal	15059639
CIE Lab	83.08, 6.51, 12.95
CIE LCh	83, 14.495, 63.318
Yxy	62.3180, 0.3485, 0.3504
Android (android.graphics.Color)	4293249719 (0xFFE5CAB7)
YUV	207.9070, -12.2792, 18.4986
Hunter-Lab	78.9417, 2.0007, 15.0312

Details

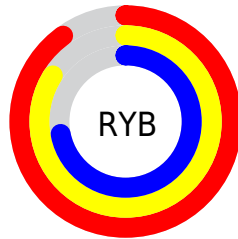
The Decimal color **15059639** is a light color, and the websafe version is hex **FFCCCC**. A complement of this color would be **12047077**, and the grayscale version is **13684944**.

A 20% lighter version of the original color is **16777199**, and **11375746** is the 20% darker color. If you saturate the color by 10%, you get **15056288**, and if you desaturate by 10%, it is **15062990**.

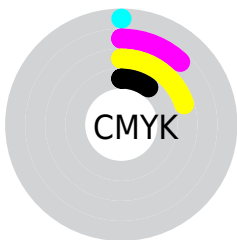
Distribution



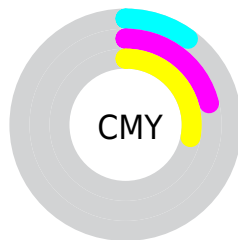
- Red (90%)
- Green (79%)
- Blue (72%)



- Red (90%)
- Yellow (84%)
- Blue (72%)



- Cyan (0%)
- Magenta (12%)
- Yellow (20%)
- Black (10%)



- Cyan (10%)
- Magenta (21%)
- Yellow (28%)

Brightness & Saturation Gradients

These gradients show how the Decimal color 15059639 changes by changing the brightness by 10 percent. The first figure shows a shift by +10% for each color and the second figure -10%.

Similar to the brightness gradients but the following saturation gradients show a change of the Decimal color 15059639 by changing the saturation by 10% instead.


 15059639

 15059639

16777215

 13217692

 16777199

 11375746

 9599593

 7889233

 6244922

 4666148

 3087887

 1705472

 0

 15059639

 15059639

 15056288

 15062990

 15052681

 15066597

 15049330

 15069948

 15045723

 15073279

 15042373

 15038766

 15035415

 15032064

Harmonies

Analogous

The Analogous color harmony consists of three colors that are next to each other on the color wheel.



15517633



15059639



14274228

Triad

The Triadic color harmony groups three colors that are evenly spaced from another and form a triangle on the color wheel.



15059639



11524048



13945830

Complementary

The Complementary color scheme is a pair of colors which are on the opposite of each other on the color wheel.



15059639



12047077

Split Complementary

Split-complementary colors differ from the complementary color scheme. The scheme consists of three colors, the original color and two neighbors of the complement color.



12767466



15059639



11327197

Square

The Square scheme is like the rectangle color scheme, but the four colors are evenly spaced on the color wheel.



15059639



12244674



11850983



14862299

Rectangle

The Rectangle color scheme consists of four colors that form a rectangle on the color wheel.



15059639



13554102



11850983



13552872

Sweetspot

The Sweet Spot groups the original color and five complimentary colors.



15059639



16774896



15054803



8419959



0



8421504

Same Dimension

The Same Dimension uses a secret algorithm to generate beautiful new colors.



15059639



16767938



15065271



7564391



11749888



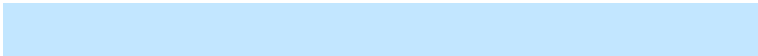
3347712

Inverse Universe

The Inverse Universe completely reimagines the original color for something new.



12047077



12773119



12041445



6778483



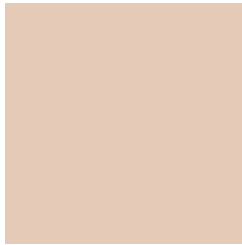
27059



7731

Previews

White Background



This preview shows how the Decimal color 15059639 looks on a white background.

Color Contrast Check

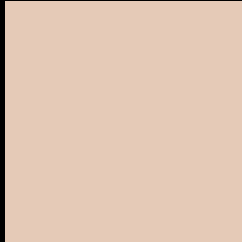
Large Text (above 18pt) WCAG AA × Fail

Any Text WCAG AA × Fail

Large Text (above 18pt) WCAG AAA × Fail

Any Text WCAG AAA × Fail

Black Background



This preview shows how the Decimal color 15059639 looks on a black background.

Color Contrast Check

Large Text (above 18pt) WCAG AA ✓ Pass

Any Text WCAG AA ✓ Pass

Large Text (above 18pt) WCAG AAA ✓ Pass

Any Text WCAG AAA ✓ Pass

If you want to check with other color combinations, try the [Color Contrast Checker](#).

Decimal 15059639 Background



This preview shows how black text looks on a background with the Decimal color 15059639.



This preview shows how white text looks on a background with the Decimal color 15059639.

Color Blindness Simulation

Color vision deficiency is a very complex topic, and I could not describe the different causes any better than Wikipedia does, so if you want to learn more, you should check out their [article about color blindness](#).

Dichromacy





Tritanopia
15320789

Trichromacy



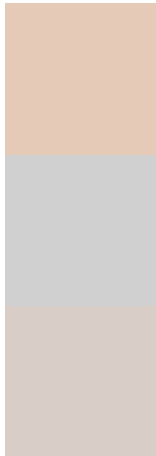
Original Color
15059639

Protanomaly
14536120

Deuteranomaly
15321271

Tritanomaly
15255498

Monochromacy



Original Color
15059639

Achromatopsia
13684944

Achromatomaly
14208711

CSS Examples

Text

The CSS property to change the color of the text to Decimal 15059639 is called "color". The color property can be set on classes, ids or directly on the HTML element.

This example shows how text in the color #E5CAB7 looks like.

```
.text, #text, p{  
  color:#E5CAB7  
}
```

If you want to add a text shadow in that color use the text-shadow property, you can generate a text shadow directly with our [CSS Text Shadow Generator](#).

Here you see how black text with a 4 pixel #E5CAB7 colored shadow looks like.

```
.shadow{ text-shadow: 4px 4px 2px #E5CAB7
}
```

Border

The CSS property to change the border of an element to Decimal 15059639 is called "border". The border property can be set on classes, ids or directly on the HTML element.

This example shows the color as border, it can be applied via the CSS property "border" or "border-color".

```
.border, #border, table{ border:4px solid
#E5CAB7 }
```

If only the border color should be changed use the property `border-color`.

```
.border{ border-color:#E5CAB7 }
```

If you want to add a box shadow in that color use:

Here you see how a box with a 4 pixel #E5CAB7 colored shadow looks like.

```
.boxshadow{ -moz-box-shadow:4px 4px 4px  
4px #E5CAB7; -webkit-box-shadow:4px 4px  
4px 4px #E5CAB7; box-shadow:4px 4px 4px  
4px #E5CAB7 }
```

Background

The CSS property to change the background color of an element to Decimal 15059639 is called "background". The background property can be set on classes, ids or directly on the HTML element.

```
.background, #background, body{  
background:#E5CAB7 }
```

If only the background color should be changed can be used:

```
.background{ background-color:#E5CAB7 }
```

This example shows the color as background, it is applied via the CSS property "background".

To optimize and compress your CSS code, you can use our [online CSS compressor and optimizer](#) based on csstidy. If you want to create a linear or radial gradient as background or border, check our [CSS Gradient Generator](#).

Hey! You found this booklet interesting? Support Converting Colors with the new Membership Option!

The pro membership hides all ads, plus gives you double the colors in the color bucket, and more awesome pro features!

[Learn more, Memberships starting at \\$2.50/m!](#)

**Follow me
on Twitter!**

@ConvertingColor