

Converting Colors

Decimal(15060147)

Have a look what the booklet for
Decimal(15060147) contains.

Decimal(15060147)	3
<i>Conversions</i>	4
<i>Details</i>	6
<i>Harmonies</i>	11
<i>Previews</i>	23
<i>Color Blindness Simulation</i>	26
<i>CSS Examples</i>	29

Color

Decimal(15060147)

Conversions

Conversions Part 1

Format	Color
Hex	E5CCB3
RGB	229, 204, 179
RGB Percent	90%, 80%, 70%
CMY	0.1020, 0.2000, 0.2980
CMYK	0.00, 0.11, 0.22, 0.10
HSL	30°, 49%, 80%
HSV	30°, 22%, 90%
XYZ	62.0426, 63.0984, 51.5570
YIQ	208.6250, 22.9250, -2.4750

Conversions

Conversions Part 2

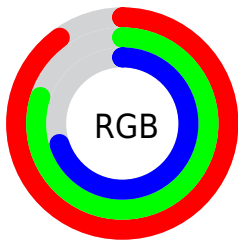
Format	Color
R _Y B	229, 229, 179
Decimal	15060147
CIE Lab	83.49, 4.88, 15.66
CIE LCh	83, 16.398, 72.697
Yxy	63.0984, 0.3511, 0.3571
Android (android.graphics.Color)	4293250227 (0xFFE5CCB3)
YUV	208.6250, -14.6051, 17.8689
Hunter-Lab	79.4345, 0.4078, 17.1219

Details

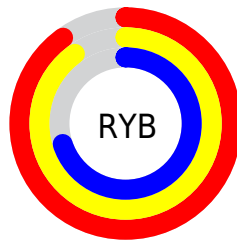
The Decimal color **15060147** is a light color, and the websafe version is hex **FFCCCC**. A complement of this color would be **11783397**, and the grayscale version is **13750737**.

A 20% lighter version of the original color is **16777195**, and **11376254** is the 20% darker color. If you saturate the color by 10%, you get **15057308**, and if you desaturate by 10%, it is **15062986**.

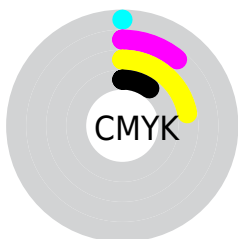
Distribution



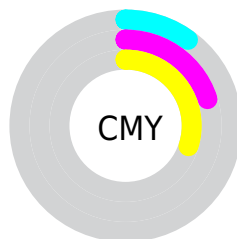
- Red (90%)
- Green (80%)
- Blue (70%)



- Red (90%)
- Yellow (90%)
- Blue (70%)



- Cyan (0%)
- Magenta (11%)
- Yellow (22%)
- Black (10%)



- Cyan (10%)
- Magenta (20%)
- Yellow (30%)

Brightness & Saturation Gradients

These gradients show how the Decimal color 15060147 changes by changing the brightness by 10 percent. The first figure shows a shift by +10% for each color and the second figure -10%.

Similar to the brightness gradients but the following saturation gradients show a change of the Decimal color 15060147 by changing the saturation by 10% instead.

 15060147

 15060147

16777215

 13218200

 16777195

 11376254

 9600101

 7889741

 6245174

 4601121

 3088395

 1640448

 0

 15060147

 15060147

 15057308

 15062986

 15054213

 15066081

 15051374

 15068920

 15048279

 15071999

 15045440

 15073279

 15042346

 15039507

 15037184

Harmonies

Analogous

The Analogous color harmony consists of three colors that are next to each other on the color wheel.



15714492



15060147



14078386

Triad

The Triadic color harmony groups three colors that are evenly spaced from another and form a triangle on the color wheel.



15060147



11196886



14404327

Complementary

The Complementary color scheme is a pair of colors which are on the opposite of each other on the color wheel.



15060147



11783397

Split Complementary

Split-complementary colors differ from the complementary color scheme. The scheme consists of three colors, the original color and two neighbors of the complement color.



13160430



15060147



11196644

Square

The Square scheme is like the rectangle color scheme, but the four colors are evenly spaced on the color wheel.



15060147



11851974



11916525



15386330

Rectangle

The Rectangle color scheme consists of four colors that form a rectangle on the color wheel.



15060147



13292726



11916525



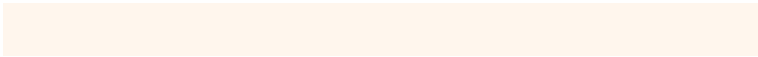
14011626

Sweetspot

The Sweet Spot groups the original color and five complimentary colors.



15060147



16774893



15053772



8419957



0



8421504

Same Dimension

The Same Dimension uses a secret algorithm to generate beautiful new colors.



15060147



16768701



15066547



7564647



11753728



3348992

Inverse Universe

The Inverse Universe completely reimagines the original color for something new.



11783397



12443391



11776997



6778227



22963



6707

Previews

White Background



This preview shows how the Decimal color 15060147 looks on a white background.

Color Contrast Check

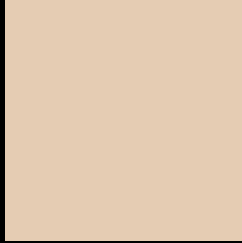
Large Text (above 18pt) WCAG AA × Fail

Any Text WCAG AA × Fail

Large Text (above 18pt) WCAG AAA × Fail

Any Text WCAG AAA × Fail

Black Background



This preview shows how the Decimal color 15060147 looks on a black background.

Color Contrast Check

Large Text (above 18pt) WCAG AA ✓ Pass

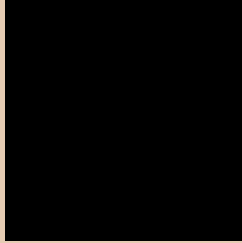
Any Text WCAG AA ✓ Pass

Large Text (above 18pt) WCAG AAA ✓ Pass

Any Text WCAG AAA ✓ Pass

If you want to check with other color combinations, try the [Color Contrast Checker](#).

Decimal 15060147 Background



This preview shows how black text looks on a background with the Decimal color 15060147.




This preview shows how white text looks on a background with the Decimal color 15060147.

Color Blindness Simulation

Color vision deficiency is a very complex topic, and I could not describe the different causes any better than Wikipedia does, so if you want to learn more, you should check out their [article about color blindness](#).

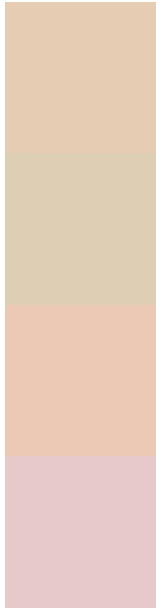
Dichromacy





Tritanopia
15321046

Trichromacy



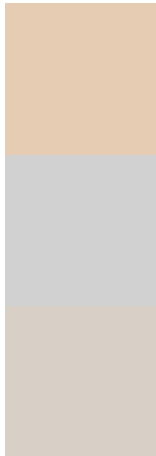
Original Color
15060147

Protanomaly
14602164

Deuteranomaly
15452596

Tritanomaly
15256009

Monochromacy



Original Color
15060147

Achromatopsia
13750737

Achromatomaly
14208966

CSS Examples

Text

The CSS property to change the color of the text to Decimal 15060147 is called "color". The color property can be set on classes, ids or directly on the HTML element.

This example shows how text in the color #E5CCB3 looks like.

```
.text, #text, p{  
    color:#E5CCB3  
}
```

If you want to add a text shadow in that color use the text-shadow property, you can generate a text shadow directly with our [CSS Text Shadow Generator](#).

Here you see how black text with a 4 pixel #E5CCB3 colored shadow looks like.

```
.shadow{ text-shadow: 4px 4px 2px #E5CCB3
}
```

Border

The CSS property to change the border of an element to Decimal 15060147 is called "border". The border property can be set on classes, ids or directly on the HTML element.

This example shows the color as border, it can be applied via the CSS property "border" or "border-color".

```
.border, #border, table{ border:4px solid
#E5CCB3 }
```

If only the border color should be changed use the property `border-color`.

```
.border{ border-color:#E5CCB3 }
```

If you want to add a box shadow in that color use:

Here you see how a box with a 4 pixel #E5CCB3 colored shadow looks like.

```
.boxshadow{ -moz-box-shadow:4px 4px 4px  
4px #E5CCB3; -webkit-box-shadow:4px 4px  
4px 4px #E5CCB3; box-shadow:4px 4px 4px  
4px #E5CCB3 }
```

Background

The CSS property to change the background color of an element to Decimal 15060147 is called "background". The background property can be set on classes, ids or directly on the HTML element.

```
.background, #background, body{  
background:#E5CCB3 }
```

If only the background color should be changed can be used:

```
.background{ background-color:#E5CCB3 }
```

This example shows the color as background, it is applied via the CSS property "background".

To optimize and compress your CSS code, you can use our [online CSS compressor and optimizer](#) based on csstidy. If you want to create a linear or radial gradient as background or border, check our [CSS Gradient Generator](#).

Hey! You found this booklet interesting? Support Converting Colors with the new Membership Option!

The pro membership hides all ads, plus gives you double the colors in the color bucket, and more awesome pro features!

[Learn more, Memberships starting at \\$2.50/m!](#)

**Follow me
on Twitter!**

@ConvertingColor