

# Converting Colors

Decimal(15089769)

Have a look what the booklet for  
Decimal(15089769) contains.

<b>Decimal(15089769)</b> .....	3
<i><b>Conversions</b></i> .....	4
<i><b>Details</b></i> .....	6
<i><b>Harmonies</b></i> .....	11
<i><b>Previews</b></i> .....	23
<i><b>Color Blindness Simulation</b></i> .....	26
<i><b>CSS Examples</b></i> .....	29

# Color

**Decimal(15089769)**

# Conversions

## Conversions Part 1

<b>Format</b>	<b>Color</b>
Hex	E64069
RGB	230, 64, 105
RGB Percent	90%, 25%, 41%
CMY	0.0980, 0.7490, 0.5882
CMYK	0.00, 0.72, 0.54, 0.10
HSL	345°, 77%, 58%
HSV	345°, 72%, 90%
XYZ	37.0163, 21.5097, 15.5654
YIQ	118.3080, 85.7750, 47.9430

# Conversions

## Conversions Part 2

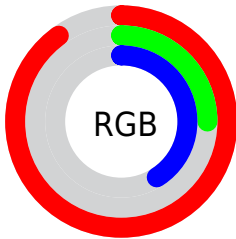
<b>Format</b>	<b>Color</b>
<b>R<sub>YB</sub></b>	230, 64, 105
Decimal	15089769
CIE <sub>Lab</sub>	53.50, 65.55, 15.26
CIE <sub>LCh</sub>	54, 67.307, 13.102
Yxy	21.5097, 0.4996, 0.2903
Android (android.graphics.Color)	4293279849 (0xFFE64069)
YUV	118.3080, -6.5608, 97.9539
Hunter-Lab	46.3786, 61.3045, 12.5663

# Details

The Decimal color **15089769** is a dark color, and the websafe version is hex **CC3366**. The color can be described as middle muted rose. A complement of this color would be **4253373**, and the grayscale version is **7763574**.

A 20% lighter version of the original color is **16743324**, and **11010106** is the 20% darker color. If you saturate the color by 10%, you get **15083864**, and if you desaturate by 10%, it is **15095674**.

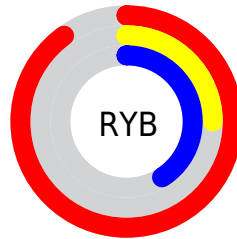
# Distribution



Red (90%)

Green (25%)

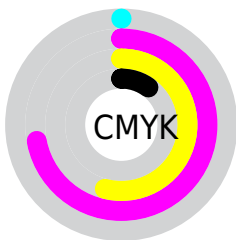
Blue (41%)



Red (90%)

Yellow (25%)

Blue (41%)

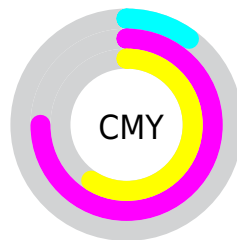


Cyan (0%)

Magenta (72%)

Yellow (54%)

Black (10%)



Cyan (10%)

Magenta (75%)

Yellow (59%)

# Brightness & Saturation Gradients

These gradients show how the Decimal color 15089769 changes by changing the brightness by 10 percent. The first figure shows a shift by +10% for each color and the second figure -10%.

Similar to the brightness gradients but the following saturation gradients show a change of the Decimal color 15089769 by changing the saturation by 10% instead.




 15089769  15089769

16777215  13048657

 16743324  11010106

 16750775  9044005

 16758226  7012369

 16765678  5111810

 16773375  3145730

 0

 15089769  15089769

 15083864  15095674

■ 15077958

■ 15101580

■ 15073337

■ 15107485

■ 15113390

■ 15119296

■ 15125201

■ 15131106

■ 15137012

■ 15138815

# Harmonies

## Analogous

The Analogous color harmony consists of three colors that are next to each other on the color wheel.



14043043



15089769



14177842

# Triad

The Triadic color harmony groups three colors that are evenly spaced from another and form a triangle on the color wheel.



15089769



4035103



37103

# Complementary

The Complementary color scheme is a pair of colors which are on the opposite of each other on the color wheel.



15089769



4253373

# Split Complementary

Split-complementary colors differ from the complementary color scheme. The scheme consists of three colors, the original color and two neighbors of the complement color.



39118



15089769



39004

# Square

The Square scheme is like the rectangle color scheme, but the four colors are evenly spaced on the color wheel.



15089769



8553728



39576



1212146

# Rectangle

The Rectangle color scheme consists of four colors that form a rectangle on the color wheel.



15089769



12740871



39576



37863



# Sweetspot

The Sweet Spot groups the original color and five complimentary colors.



15089769



16762837



12402918



8412775



0



8421504



# Same Dimension

The Same Dimension uses a secret algorithm to generate beautiful new colors.



15089769



16720216



15100224



7563114



11730988



3342349



# Inverse Universe

The Inverse Universe completely reimagines the original color for something new.



15089769



16720216



4242918



7563114



11730988

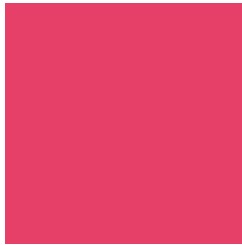


3342349



# Previews

## White Background



This preview shows how the Decimal color 15089769 looks on a white background.

## Color Contrast Check

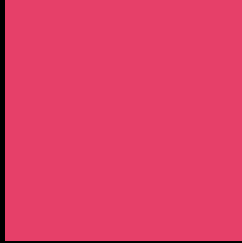
Large Text (above 18pt) WCAG AA ✓ Pass

Any Text WCAG AA × Fail

Large Text (above 18pt) WCAG AAA × Fail

Any Text WCAG AAA × Fail

# Black Background



This preview shows how the Decimal color 15089769 looks on a black background.

## Color Contrast Check

Large Text (above 18pt) WCAG AA ✓ Pass

Any Text WCAG AA ✓ Pass

Large Text (above 18pt) WCAG AAA ✓ Pass

Any Text WCAG AAA × Fail

If you want to check with other color combinations, try the [Color Contrast Checker](#).



## Decimal 15089769 Background



This preview shows how black text looks on a background with the Decimal color 15089769.

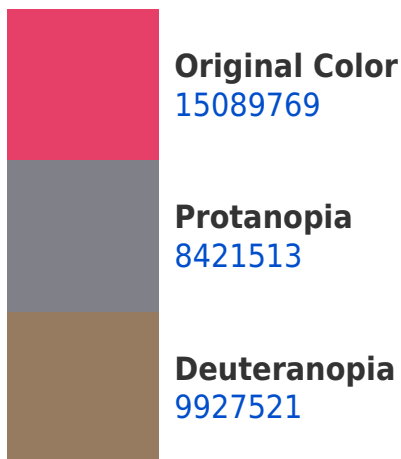


This preview shows how white text looks on a background with the Decimal color 15089769.

# Color Blindness Simulation

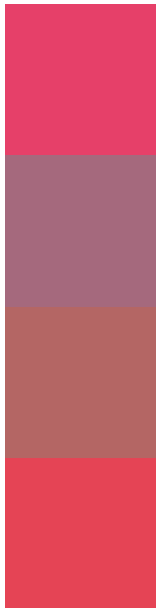
Color vision deficiency is a very complex topic, and I could not describe the different causes any better than Wikipedia does, so if you want to learn more, you should check out their [article about color blindness](#).

## Dichromacy





# Trichromacy



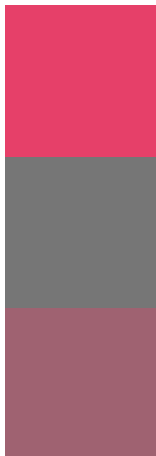
**Original Color**  
15089769

**Protanomaly**  
10840445

**Deuteranomaly**  
11822692

**Tritanomaly**  
15025237

# Monochromacy



**Original Color**  
15089769

**Achromatopsia**  
7763574

**Achromatomaly**  
10445425

# CSS Examples

## Text

The CSS property to change the color of the text to Decimal 15089769 is called "color". The color property can be set on classes, ids or directly on the HTML element.

This example shows how text in the color #E64069 looks like.

```
.text, #text, p{  
    color:#E64069  
}
```

If you want to add a text shadow in that color use the text-shadow property, you can generate a text shadow directly with our [CSS Text Shadow Generator](#).

Here you see how black text with a 4 pixel #E64069 colored shadow looks like.

```
.shadow{ text-shadow: 4px 4px 2px #E64069
}
```

## Border

The CSS property to change the border of an element to Decimal 15089769 is called "border". The border property can be set on classes, ids or directly on the HTML element.

This example shows the color as border, it can be applied via the CSS property "border" or "border-color".

```
.border, #border, table{ border:4px solid
#E64069 }
```

If only the border color should be changed use the property `border-color`.

```
.border{ border-color:#E64069 }
```

If you want to add a box shadow in that color use:

Here you see how a box with a 4 pixel #E64069 colored shadow looks like.

```
.boxshadow{ -moz-box-shadow:4px 4px 4px  
4px #E64069; -webkit-box-shadow:4px 4px  
4px 4px #E64069; box-shadow:4px 4px 4px  
4px #E64069 }
```

# Background

The CSS property to change the background color of an element to Decimal 15089769 is called "background". The background property can be set on classes, ids or directly on the HTML element.

```
.background, #background, body{  
background:#E64069 }
```

If only the background color should be changed can be used:

```
.background{ background-color:#E64069 }
```

This example shows the color as background, it is applied via the CSS property "background".

To optimize and compress your CSS code, you can use our [online CSS compressor and optimizer](#) based on csstidy. If you want to create a linear or radial gradient as background or border, check our [CSS Gradient Generator](#).



Hey! You found this booklet interesting? Support Converting Colors with the new Membership Option!

The pro membership hides all ads, plus gives you double the colors in the color bucket, and more awesome pro features!

**[Learn more, Memberships starting at \\$2.50/m!](#)**

**Follow me  
on Twitter!**

@ConvertingColor