

# Converting Colors

Decimal(15099091)

Have a look what the booklet for  
Decimal(15099091) contains.

<b>Decimal(15099091)</b> .....	3
<i><b>Conversions</b></i> .....	4
<i><b>Details</b></i> .....	6
<i><b>Harmonies</b></i> .....	11
<i><b>Previews</b></i> .....	23
<i><b>Color Blindness Simulation</b></i> .....	26
<i><b>CSS Examples</b></i> .....	29

# Color

**Decimal(15099091)**

# Conversions

## Conversions Part 1

Format	Color
Hex	E664D3
RGB	230, 100, 211
RGB Percent	90%, 39%, 83%
CMY	0.0980, 0.6078, 0.1725
CMYK	0.00, 0.57, 0.08, 0.10
HSL	309°, 72%, 65%
HSV	309°, 57%, 90%
XYZ	48.9482, 30.6405, 64.9624
YIQ	151.5240, 41.8490, 62.0810

# Conversions

## Conversions Part 2

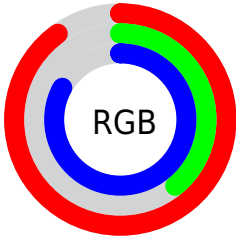
<b>Format</b>	<b>Color</b>
R <sub>Y</sub> B	230, 100, 211
Decimal	15099091
CIE Lab	62.20, 63.70, -33.54
CIE LCh	62, 71.985, 332.232
Yxy	30.6405, 0.3386, 0.2120
Android (android.graphics.Color)	4293289171 (0xFFE664D3)
YUV	151.5240, 29.3217, 68.8235
Hunter-Lab	55.3538, 60.9743, -30.8341

# Details

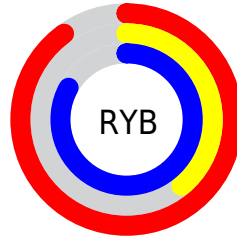
The Decimal color **15099091** is a light color, and the websafe version is hex **CC66CC**. A complement of this color would be **6612599**, and the grayscale version is **9934743**.

A 20% lighter version of the original color is **16751871**, and **11282588** is the 20% darker color. If you saturate the color by 10%, you get **15093200**, and if you desaturate by 10%, it is **15104982**.

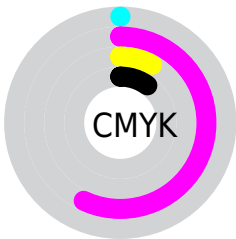
# Distribution



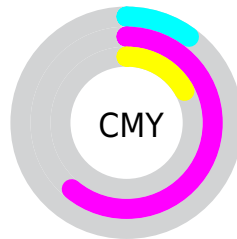
- Red (90%)
- Green (39%)
- Blue (83%)



- Red (90%)
- Yellow (39%)
- Blue (83%)



- Cyan (0%)
- Magenta (57%)
- Yellow (8%)
- Black (10%)



- Cyan (10%)
- Magenta (61%)
- Yellow (17%)

# Brightness & Saturation Gradients

These gradients show how the Decimal color 15099091 changes by changing the brightness by 10 percent. The first figure shows a shift by +10% for each color and the second figure -10%.

Similar to the brightness gradients but the following saturation gradients show a change of the Decimal color 15099091 by changing the saturation by 10% instead.



 15099091

 15099091

16777215

 13125559

 16751871

 11282588

 16759295

 9371778

 16766719

 7536744

 16774399

 5767248

 4063288

 2293794

 7

 0

15099091

15099091

15093200

15104982

15087308

15110874

15081417

15116765

15075526

15122656

15073476

15128548

15134439

15138795

15138798

15138801

# Harmonies

## Analogous

The Analogous color harmony consists of three colors that are next to each other on the color wheel.



10126335



15099091



16732820

# Triad

The Triadic color harmony groups three colors that are evenly spaced from another and form a triangle on the color wheel.



15099091



11572480



46041

# Complementary

The Complementary color scheme is a pair of colors which are on the opposite of each other on the color wheel.



15099091



6612599

# Split Complementary

Split-complementary colors differ from the complementary color scheme. The scheme consists of three colors, the original color and two neighbors of the complement color.



45977



15099091



7317012

# Square

The Square scheme is like the rectangle color scheme, but the four colors are evenly spaced on the color wheel.



15099091



14842907



44887



44287

# Rectangle

The Rectangle color scheme consists of four colors that form a rectangle on the color wheel.



15099091



16734314



44887



46021



# Sweetspot

The Sweet Spot groups the original color and five complimentary colors.



15099091



16766201



7693542



8414844



0



8421504



# Same Dimension

The Same Dimension uses a secret algorithm to generate beautiful new colors.



15099091



16732902



15099028



7563121



11731096



3342380



# Inverse Universe

The Inverse Universe completely reimagines the original color for something new.



15099091



16732902



6612662



7563121



11731096

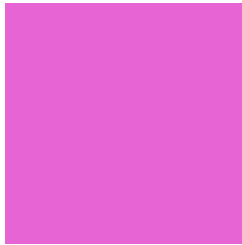


3342380



# Previews

## White Background



This preview shows how the Decimal color 15099091 looks on a white background.

## Color Contrast Check

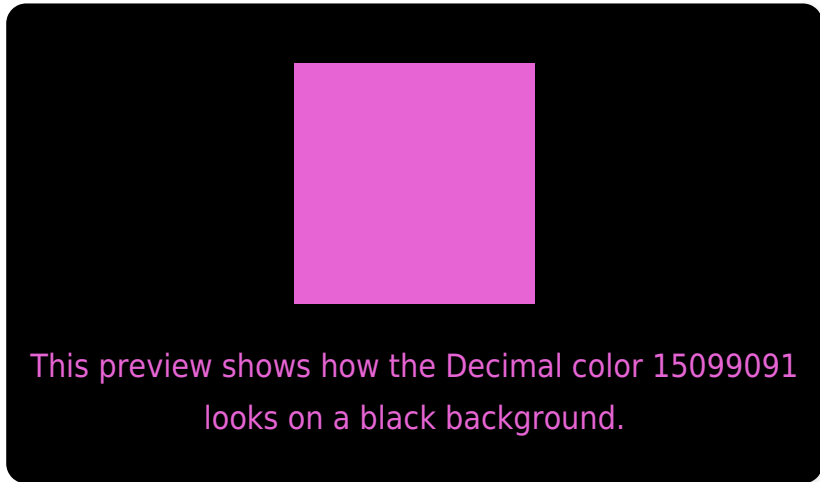
Large Text (above 18pt) WCAG AA × Fail

Any Text WCAG AA × Fail

Large Text (above 18pt) WCAG AAA × Fail

Any Text WCAG AAA × Fail

# Black Background



## Color Contrast Check

Large Text (above 18pt) WCAG AA ✓ Pass

Any Text WCAG AA ✓ Pass

Large Text (above 18pt) WCAG AAA ✓ Pass

Any Text WCAG AAA ✓ Pass

If you want to check with other color combinations, try the [Color Contrast Checker](#).



## Decimal 15099091 Background



This preview shows how black text looks on a background with the Decimal color 15099091.




This preview shows how white text looks on a background with the Decimal color 15099091.

# Color Blindness Simulation

Color vision deficiency is a very complex topic, and I could not describe the different causes any better than Wikipedia does, so if you want to learn more, you should check out their [article about color blindness](#).

## Dichromacy





**Tritanopia**  
14514561

# Trichromacy



**Original Color**  
15099091



**Protanomaly**  
9994988



**Deuteranomaly**  
11174862



**Tritanomaly**  
14709151

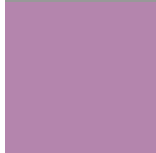
# Monochromacy



**Original Color**  
15099091



**Achromatopsia**  
10000536



**Achromatomaly**  
11830701

# CSS Examples

## Text

The CSS property to change the color of the text to Decimal 15099091 is called "color". The color property can be set on classes, ids or directly on the HTML element.

This example shows how text in the color #E664D3 looks like.

```
.text, #text, p{  
    color:#E664D3  
}
```

If you want to add a text shadow in that color use the text-shadow property, you can generate a text shadow directly with our [CSS Text Shadow Generator](#).

Here you see how black text with a 4 pixel #E664D3 colored shadow looks like.

```
.shadow{ text-shadow: 4px 4px 2px #E664D3
}
```

## Border

The CSS property to change the border of an element to Decimal 15099091 is called "border". The border property can be set on classes, ids or directly on the HTML element.

This example shows the color as border, it can be applied via the CSS property "border" or "border-color".

```
.border, #border, table{ border:4px solid
#E664D3 }
```

If only the border color should be changed use the property `border-color`.

```
.border{ border-color:#E664D3 }
```

If you want to add a box shadow in that color use:

Here you see how a box with a 4 pixel #E664D3 colored shadow looks like.

```
.boxshadow{ -moz-box-shadow:4px 4px 4px  
4px #E664D3; -webkit-box-shadow:4px 4px  
4px 4px #E664D3; box-shadow:4px 4px 4px  
4px #E664D3 }
```

# Background

The CSS property to change the background color of an element to Decimal 15099091 is called "background". The background property can be set on classes, ids or directly on the HTML element.

```
.background, #background, body{  
background:#E664D3 }
```

If only the background color should be changed can be used:

```
.background{ background-color:#E664D3 }
```

This example shows the color as background, it is applied via the CSS property "background".

To optimize and compress your CSS code, you can use our [online CSS compressor and optimizer](#) based on csstidy. If you want to create a linear or radial gradient as background or border, check our [CSS Gradient Generator](#).



Hey! You found this booklet interesting? Support Converting Colors with the new Membership Option!

The pro membership hides all ads, plus gives you double the colors in the color bucket, and more awesome pro features!

**[Learn more, Memberships starting at \\$2.50/m!](#)**

**Follow me  
on Twitter!**

@ConvertingColor