

Converting Colors

Decimal(15104916)

Have a look what the booklet for
Decimal(15104916) contains.

Decimal(15104916)	3
<i>Conversions</i>	4
<i>Details</i>	6
<i>Harmonies</i>	11
<i>Previews</i>	23
<i>Color Blindness Simulation</i>	26
<i>CSS Examples</i>	29

Color

Decimal(15104916)

Conversions

Conversions Part 1

Format	Color
Hex	E67B94
RGB	230, 123, 148
RGB Percent	90%, 48%, 58%
CMY	0.0980, 0.5176, 0.4196
CMYK	0.00, 0.47, 0.36, 0.10
HSL	346°, 68%, 69%
HSV	346°, 47%, 90%
XYZ	45.0614, 33.1270, 32.0361
YIQ	157.8430, 55.7470, 30.4590

Conversions

Conversions Part 2

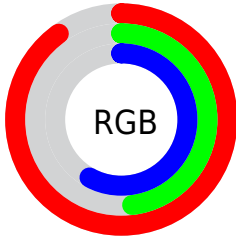
Format	Color
RYB	230, 123, 148
Decimal	15104916
CIELab	64.26, 43.91, 5.36
CIELCh	64, 44.237, 6.964
Yxy	33.1270, 0.4088, 0.3005
Android (android.graphics.Color)	4293294996 (0xFFE67B94)
YUV	157.8430, -4.8526, 63.2817
Hunter-Lab	57.5561, 39.0267, 7.2880

Details

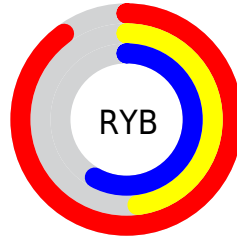
The Decimal color **15104916** is a light color, and the websafe version is hex **FF9999**. A complement of this color would be **8120013**, and the grayscale version is **10395294**.

A 20% lighter version of the original color is **16757450**, and **11224674** is the 20% darker color. If you saturate the color by 10%, you get **15099010**, and if you desaturate by 10%, it is **15110822**.

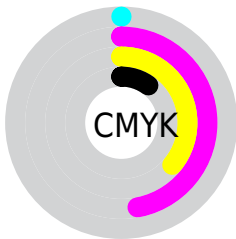
Distribution



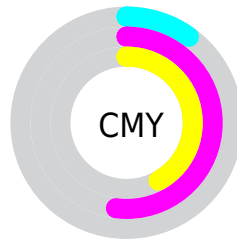
- Red (90%)
- Green (48%)
- Blue (58%)



- Red (90%)
- Yellow (48%)
- Blue (58%)



- Cyan (0%)
- Magenta (47%)
- Yellow (36%)
- Black (10%)



- Cyan (10%)
- Magenta (52%)
- Yellow (42%)

Brightness & Saturation Gradients

These gradients show how the Decimal color 15104916 changes by changing the brightness by 10 percent. The first figure shows a shift by +10% for each color and the second figure -10%.

Similar to the brightness gradients but the following saturation gradients show a change of the Decimal color 15104916 by changing the saturation by 10% instead.

 15104916

 15104916

16777215

 13132154

 16757450

 11224674

 16764646

 9382986

 16772095

 7540019

 5701663

 4063237

 2162689

 0

 15104916

 15104916

 15099010

 15110822


 15093105

 15116727

 15087199

 15122633


 15081293


 15128539

 15075388

 15134444

 15073334

 15138814

 15138815

Harmonies

Analogous

The Analogous color harmony consists of three colors that are next to each other on the color wheel.



13926587



15104916



14844270

Triad

The Triadic color harmony groups three colors that are evenly spaced from another and form a triangle on the color wheel.



15104916



8496987



43236

Complementary

The Complementary color scheme is a pair of colors which are on the opposite of each other on the color wheel.



15104916



8120013

Split Complementary

Split-complementary colors differ from the complementary color scheme. The scheme consists of three colors, the original color and two neighbors of the complement color.



44746



15104916



4959867

Square

The Square scheme is like the rectangle color scheme, but the four colors are evenly spaced on the color wheel.



15104916



11246923



45220



7052778

Rectangle

The Rectangle color scheme consists of four colors that form a rectangle on the color wheel.



15104916



14060123



45220



43997

Sweetspot

The Sweet Spot groups the original color and five complimentary colors.



15104916



16767972



13335526



8415855



0



8421504

Same Dimension

The Same Dimension uses a secret algorithm to generate beautiful new colors.



15104916



16740498



15111803



7563114



11730986



3342348

Inverse Universe

The Inverse Universe completely reimagines the original color for something new.



15104916



16740498



8113126



7563114



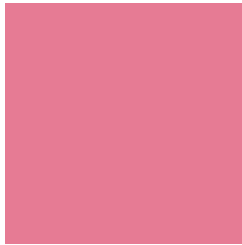
11730986



3342348

Previews

White Background



This preview shows how the Decimal color 15104916 looks on a white background.

Color Contrast Check

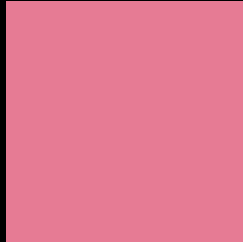
Large Text (above 18pt) WCAG AA × Fail

Any Text WCAG AA × Fail

Large Text (above 18pt) WCAG AAA × Fail

Any Text WCAG AAA × Fail

Black Background



This preview shows how the Decimal color 15104916 looks on a black background.

Color Contrast Check

Large Text (above 18pt) WCAG AA ✓ Pass

Any Text WCAG AA ✓ Pass

Large Text (above 18pt) WCAG AAA ✓ Pass

Any Text WCAG AAA ✓ Pass

If you want to check with other color combinations, try the [Color Contrast Checker](#).

Decimal 15104916 Background



This preview shows how black text looks on a background with the Decimal color 15104916.



This preview shows how white text looks on a background with the Decimal color 15104916.

Color Blindness Simulation

Color vision deficiency is a very complex topic, and I could not describe the different causes any better than Wikipedia does, so if you want to learn more, you should check out their [article about color blindness](#).

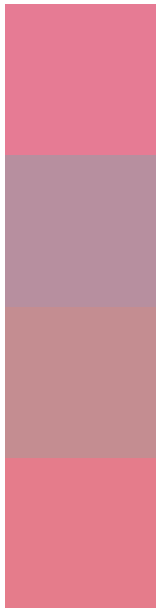
Dichromacy





Tritanopia
15039878

Trichromacy



Original Color
15104916

Protanomaly
12029855

Deuteranomaly
12881297

Tritanomaly
15039627

Monochromacy



Original Color
15104916

Achromatopsia
10395294

Achromatomaly
12095898

CSS Examples

Text

The CSS property to change the color of the text to Decimal 15104916 is called "color". The color property can be set on classes, ids or directly on the HTML element.

This example shows how text in the color #E67B94 looks like.

```
.text, #text, p{  
  color:#E67B94  
}
```

If you want to add a text shadow in that color use the text-shadow property, you can generate a text shadow directly with our [CSS Text Shadow Generator](#).

Here you see how black text with a 4 pixel #E67B94 colored shadow looks like.

```
.shadow{ text-shadow: 4px 4px 2px #E67B94
}
```

Border

The CSS property to change the border of an element to Decimal 15104916 is called "border". The border property can be set on classes, ids or directly on the HTML element.

This example shows the color as border, it can be applied via the CSS property "border" or "border-color".

```
.border, #border, table{ border:4px solid
#E67B94 }
```

If only the border color should be changed use the property `border-color`.

```
.border{ border-color:#E67B94 }
```

If you want to add a box shadow in that color use:

Here you see how a box with a 4 pixel #E67B94 colored shadow looks like.

```
.boxshadow{ -moz-box-shadow:4px 4px 4px  
4px #E67B94; -webkit-box-shadow:4px 4px  
4px 4px #E67B94; box-shadow:4px 4px 4px  
4px #E67B94 }
```

Background

The CSS property to change the background color of an element to Decimal 15104916 is called "background". The background property can be set on classes, ids or directly on the HTML element.

```
.background, #background, body{  
background:#E67B94 }
```

If only the background color should be changed can be used:

```
.background{ background-color:#E67B94 }
```

This example shows the color as background, it is applied via the CSS property "background".

To optimize and compress your CSS code, you can use our [online CSS compressor and optimizer](#) based on csstidy. If you want to create a linear or radial gradient as background or border, check our [CSS Gradient Generator](#).

Hey! You found this booklet interesting? Support Converting Colors with the new Membership Option!

The pro membership hides all ads, plus gives you double the colors in the color bucket, and more awesome pro features!

[Learn more, Memberships starting at \\$2.50/m!](#)

**Follow me
on Twitter!**

@ConvertingColor