

Converting Colors

Decimal(15108509)

Have a look what the booklet for
Decimal(15108509) contains.

Decimal(15108509)	3
<i>Conversions</i>	4
<i>Details</i>	6
<i>Harmonies</i>	11
<i>Previews</i>	23
<i>Color Blindness Simulation</i>	26
<i>CSS Examples</i>	29

Color

Decimal(15108509)

Conversions

Conversions Part 1

Format	Color
Hex	E6899D
RGB	230, 137, 157
RGB Percent	90%, 54%, 62%
CMY	0.0980, 0.4627, 0.3843
CMYK	0.00, 0.40, 0.32, 0.10
HSL	347°, 65%, 72%
HSV	347°, 40%, 90%
XYZ	47.6646, 37.1486, 36.5565
YIQ	167.0870, 49.0080, 25.9360

Conversions

Conversions Part 2

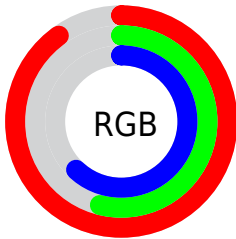
Format	Color
R _Y B	230, 137, 157
Decimal	15108509
CIE Lab	67.39, 37.81, 4.77
CIE LCh	67, 38.109, 7.187
Yxy	37.1486, 0.3927, 0.3061
Android (android.graphics.Color)	4293298589 (0xFFE6899D)
YUV	167.0870, -4.9729, 55.1747
Hunter-Lab	60.9497, 32.9307, 7.1037

Details

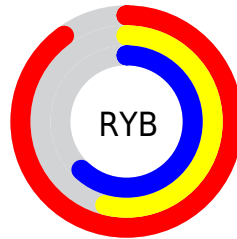
The Decimal color **15108509** is a light color, and the websafe version is hex **FF9999**. A complement of this color would be **9037522**, and the grayscale version is **10987431**.

A 20% lighter version of the original color is **16761043**, and **11294058** is the 20% darker color. If you saturate the color by 10%, you get **15102603**, and if you desaturate by 10%, it is **15114415**.

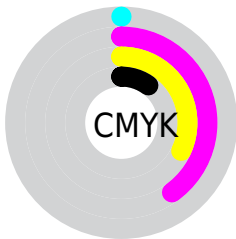
Distribution



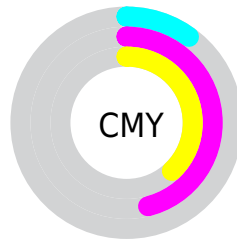
- Red (90%)
- Green (54%)
- Blue (62%)



- Red (90%)
- Yellow (54%)
- Blue (62%)



- Cyan (0%)
- Magenta (40%)
- Yellow (32%)
- Black (10%)





- Cyan (10%)
- Magenta (46%)
- Yellow (38%)

Brightness & Saturation Gradients

These gradients show how the Decimal color 15108509 changes by changing the brightness by 10 percent. The first figure shows a shift by +10% for each color and the second figure -10%.

Similar to the brightness gradients but the following saturation gradients show a change of the Decimal color 15108509 by changing the saturation by 10% instead.

 15108509

 15108509

16777215

 13201283

 16761043

 11294058

 16768240

 9452626

 16775679

 7676475


 5899301

 4128784

 2621441

 0

 15108509

 15108509

 15102603

 15114415

 15096697

 15120321

 15090791

 15126227

 15084885

 15132133

 15078979

 15138039

 15073329

 15138815

Harmonies

Analogous

The Analogous color harmony consists of three colors that are next to each other on the color wheel.



14060991



15108509



14913148

Triad

The Triadic color harmony groups three colors that are evenly spaced from another and form a triangle on the color wheel.



15108509



9285228



4173795

Complementary

The Complementary color scheme is a pair of colors which are on the opposite of each other on the color wheel.



15108509



9037522

Split Complementary

Split-complementary colors differ from the complementary color scheme. The scheme consists of three colors, the original color and two neighbors of the complement color.



46540



15108509



6534280

Square

The Square scheme is like the rectangle color scheme, but the four colors are evenly spaced on the color wheel.



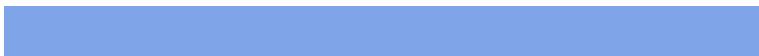
15108509



11707743



2995883



8365544

Rectangle

The Rectangle color scheme consists of four colors that form a rectangle on the color wheel.



15108509



14194027



2995883



2470365

Sweetspot

The Sweet Spot groups the original color and five complimentary colors.



15108509



16769255



13797862



8416881



0



8421504

Same Dimension

The Same Dimension uses a secret algorithm to generate beautiful new colors.



15108509



16745117



15115145



7563114



11730982



3342347

Inverse Universe

The Inverse Universe completely reimagines the original color for something new.



15108509



16745117



9030886



7563114



11730982



3342347

Previews

White Background



This preview shows how the Decimal color 15108509 looks on a white background.

Color Contrast Check

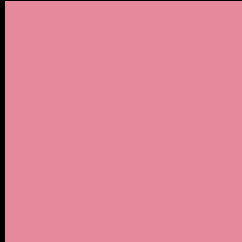
Large Text (above 18pt) WCAG AA × Fail

Any Text WCAG AA × Fail

Large Text (above 18pt) WCAG AAA × Fail

Any Text WCAG AAA × Fail

Black Background



This preview shows how the Decimal color 15108509 looks on a black background.

Color Contrast Check

Large Text (above 18pt) WCAG AA ✓ Pass

Any Text WCAG AA ✓ Pass

Large Text (above 18pt) WCAG AAA ✓ Pass

Any Text WCAG AAA ✓ Pass

If you want to check with other color combinations, try the [Color Contrast Checker](#).

Decimal 15108509 Background



This preview shows how black text looks on a background with the Decimal color 15108509.



This preview shows how white text looks on a background with the Decimal color 15108509.

Color Blindness Simulation

Color vision deficiency is a very complex topic, and I could not describe the different causes any better than Wikipedia does, so if you want to learn more, you should check out their [article about color blindness](#).

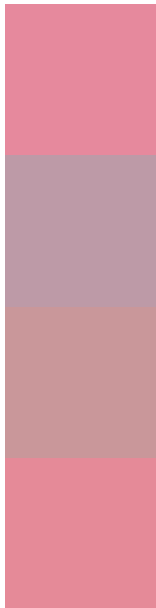
Dichromacy





Tritanopia
15043221

Trichromacy



Original Color
15108509

Protanomaly
12425895

Deuteranomaly
13211546

Tritanomaly
15043224

Monochromacy



Original Color
15108509

Achromatopsia
10987431

Achromatomaly
12491939

CSS Examples

Text

The CSS property to change the color of the text to Decimal 15108509 is called "color". The color property can be set on classes, ids or directly on the HTML element.

This example shows how text in the color #E6899D looks like.

```
.text, #text, p{  
    color:#E6899D  
}
```

If you want to add a text shadow in that color use the text-shadow property, you can generate a text shadow directly with our [CSS Text Shadow Generator](#).

Here you see how black text with a 4 pixel #E6899D colored shadow looks like.

```
.shadow{ text-shadow: 4px 4px 2px #E6899D
}
```

Border

The CSS property to change the border of an element to Decimal 15108509 is called "border". The border property can be set on classes, ids or directly on the HTML element.

This example shows the color as border, it can be applied via the CSS property "border" or "border-color".

```
.border, #border, table{ border:4px solid
#E6899D }
```

If only the border color should be changed use the property `border-color`.

```
.border{ border-color:#E6899D }
```

If you want to add a box shadow in that color use:

Here you see how a box with a 4 pixel #E6899D colored shadow looks like.

```
.boxshadow{ -moz-box-shadow:4px 4px 4px  
4px #E6899D; -webkit-box-shadow:4px 4px  
4px 4px #E6899D; box-shadow:4px 4px 4px  
4px #E6899D }
```

Background

The CSS property to change the background color of an element to Decimal 15108509 is called "background". The background property can be set on classes, ids or directly on the HTML element.

```
.background, #background, body{  
background:#E6899D }
```

If only the background color should be changed can be used:

```
.background{ background-color:#E6899D }
```

This example shows the color as background, it is applied via the CSS property "background".

To optimize and compress your CSS code, you can use our [online CSS compressor and optimizer](#) based on csstidy. If you want to create a linear or radial gradient as background or border, check our [CSS Gradient Generator](#).

Hey! You found this booklet interesting? Support Converting Colors with the new Membership Option!

The pro membership hides all ads, plus gives you double the colors in the color bucket, and more awesome pro features!

[Learn more, Memberships starting at \\$2.50/m!](#)

**Follow me
on Twitter!**

@ConvertingColor