

Converting Colors

Decimal(15112875)

Have a look what the booklet for
Decimal(15112875) contains.

Decimal(15112875)	3
<i>Conversions</i>	4
<i>Details</i>	6
<i>Harmonies</i>	11
<i>Previews</i>	23
<i>Color Blindness Simulation</i>	26
<i>CSS Examples</i>	29

Color

Decimal(15112875)

Conversions

Conversions Part 1

Format	Color
Hex	E69AAB
RGB	230, 154, 171
RGB Percent	90%, 60%, 67%
CMY	0.0980, 0.3961, 0.3294
CMYK	0.00, 0.33, 0.26, 0.10
HSL	347°, 60%, 75%
HSV	347°, 33%, 90%
XYZ	51.5394, 42.8745, 44.0873
YIQ	178.6620, 39.8390, 21.3990

Conversions

Conversions Part 2

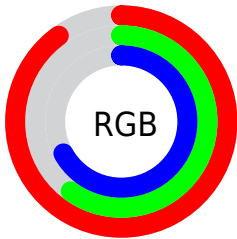
Format	Color
R _Y B	230, 154, 171
Decimal	15112875
CIE Lab	71.47, 30.70, 2.85
CIE LCh	71, 30.835, 5.301
Yxy	42.8745, 0.3721, 0.3096
Android (android.graphics.Color)	4293302955 (0xFFE69AAB)
YUV	178.6620, -3.7774, 45.0234
Hunter-Lab	65.4786, 25.9131, 5.9146

Details

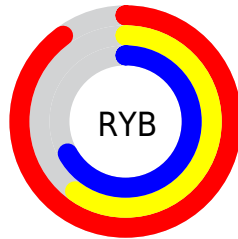
The Decimal color **15112875** is a light color, and the websafe version is hex **CC9999**. A complement of this color would be **10151637**, and the grayscale version is **11776947**.

A 20% lighter version of the original color is **16765410**, and **11363959** is the 20% darker color. If you saturate the color by 10%, you get **15106969**, and if you desaturate by 10%, it is **15118781**.

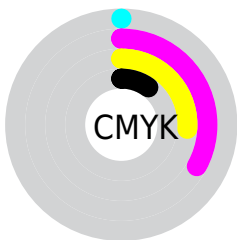
Distribution



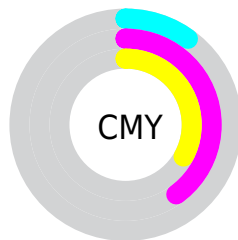
- Red (90%)
- Green (60%)
- Blue (67%)



- Red (90%)
- Yellow (60%)
- Blue (67%)



- Cyan (0%)
- Magenta (33%)
- Yellow (26%)
- Black (10%)





- Cyan (10%)
- Magenta (40%)
- Yellow (33%)

Brightness & Saturation Gradients

These gradients show how the Decimal color 15112875 changes by changing the brightness by 10 percent. The first figure shows a shift by +10% for each color and the second figure -10%.

Similar to the brightness gradients but the following saturation gradients show a change of the Decimal color 15112875 by changing the saturation by 10% instead.

 15112875

 15112875

16777215

 13205649

 16765410

 11363959

 16772863

 9522526


 7746887


 6036784

 4326172

 3014657

 0

 15112875

 15112875

 15106969

 15118781

 15101063

 15124687

 15095157

 15130593

 15089252

 15136498

 15083346

 15138815

 15077440

 15073331

Harmonies

Analogous

The Analogous color harmony consists of three colors that are next to each other on the color wheel.



14130631



15112875



15048080

Triad

The Triadic color harmony groups three colors that are evenly spaced from another and form a triangle on the color wheel.



15112875



10467200



6928609

Complementary

The Complementary color scheme is a pair of colors which are on the opposite of each other on the color wheel.



15112875



10151637

Split Complementary

Split-complementary colors differ from the complementary color scheme. The scheme consists of three colors, the original color and two neighbors of the complement color.



5553615



15112875



8305815

Square

The Square scheme is like the rectangle color scheme, but the four colors are evenly spaced on the color wheel.



15112875



12496759



6340531



9613543

Rectangle

The Rectangle color scheme consists of four colors that form a rectangle on the color wheel.



15112875



14525058



6340531



6273756

Sweetspot

The Sweet Spot groups the original color and five complimentary colors.



15112875



16770795



13933286



8417396



0



8421504

Same Dimension

The Same Dimension uses a secret algorithm to generate beautiful new colors.



15112875



16751024



15117978



7563114



11730984



3342347

Inverse Universe

The Inverse Universe completely reimagines the original color for something new.



15112875



16751024



10146534



7563114



11730984



3342347

Previews

White Background



This preview shows how the Decimal color 15112875 looks on a white background.

Color Contrast Check

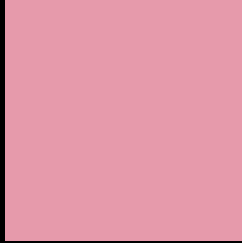
Large Text (above 18pt) WCAG AA × Fail

Any Text WCAG AA × Fail

Large Text (above 18pt) WCAG AAA × Fail

Any Text WCAG AAA × Fail

Black Background



This preview shows how the Decimal color 15112875 looks on a black background.

Color Contrast Check

Large Text (above 18pt) WCAG AA ✓ Pass

Any Text WCAG AA ✓ Pass

Large Text (above 18pt) WCAG AAA ✓ Pass

Any Text WCAG AAA ✓ Pass

If you want to check with other color combinations, try the [Color Contrast Checker](#).

Decimal 15112875 Background



This preview shows how black text looks on a background with the Decimal color 15112875.



This preview shows how white text looks on a background with the Decimal color 15112875.

Color Blindness Simulation

Color vision deficiency is a very complex topic, and I could not describe the different causes any better than Wikipedia does, so if you want to learn more, you should check out their [article about color blindness](#).

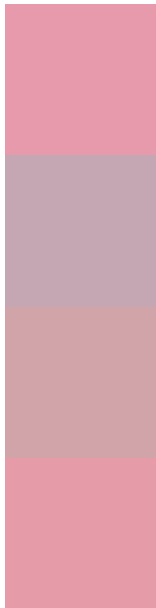
Dichromacy





Tritanopia
15113126

Trichromacy



Original Color
15112875

Protanomaly
12887987

Deuteranomaly
13673641

Tritanomaly
15113128

Monochromacy



Original Color
15112875

Achromatopsia
11776947

Achromatomaly
13019824

CSS Examples

Text

The CSS property to change the color of the text to Decimal 15112875 is called "color". The color property can be set on classes, ids or directly on the HTML element.

This example shows how text in the color #E69AAB looks like.

```
.text, #text, p{  
    color:#E69AAB  
}
```

If you want to add a text shadow in that color use the text-shadow property, you can generate a text shadow directly with our [CSS Text Shadow Generator](#).

Here you see how black text with a 4 pixel #E69AAB colored shadow looks like.

```
.shadow{ text-shadow: 4px 4px 2px #E69AAB
}
```

Border

The CSS property to change the border of an element to Decimal 15112875 is called "border". The border property can be set on classes, ids or directly on the HTML element.

This example shows the color as border, it can be applied via the CSS property "border" or "border-color".

```
.border, #border, table{ border:4px solid
#E69AAB }
```

If only the border color should be changed use the property `border-color`.

```
.border{ border-color:#E69AAB }
```

If you want to add a box shadow in that color use:

Here you see how a box with a 4 pixel #E69AAB colored shadow looks like.

```
.boxshadow{ -moz-box-shadow:4px 4px 4px  
4px #E69AAB; -webkit-box-shadow:4px 4px  
4px 4px #E69AAB; box-shadow:4px 4px 4px  
4px #E69AAB }
```

Background

The CSS property to change the background color of an element to Decimal 15112875 is called "background". The background property can be set on classes, ids or directly on the HTML element.

```
.background, #background, body{  
background:#E69AAB }
```

If only the background color should be changed can be used:

```
.background{ background-color:#E69AAB }
```

This example shows the color as background, it is applied via the CSS property "background".

To optimize and compress your CSS code, you can use our [online CSS compressor and optimizer](#) based on csstidy. If you want to create a linear or radial gradient as background or border, check our [CSS Gradient Generator](#).

Hey! You found this booklet interesting? Support Converting Colors with the new Membership Option!

The pro membership hides all ads, plus gives you double the colors in the color bucket, and more awesome pro features!

[Learn more, Memberships starting at \\$2.50/m!](#)

**Follow me
on Twitter!**

@ConvertingColor