

Converting Colors

Decimal(15122350)

Have a look what the booklet for
Decimal(15122350) contains.

| | |
|--|----|
| Decimal(15122350) | 3 |
| <i>Conversions</i> | 4 |
| <i>Details</i> | 6 |
| <i>Harmonies</i> | 11 |
| <i>Previews</i> | 23 |
| <i>Color Blindness Simulation</i> | 26 |
| <i>CSS Examples</i> | 29 |

Color

Decimal(15122350)

Conversions

Conversions Part 1

| Format | Color |
|-------------|---------------------------|
| Hex | E6BFAE |
| RGB | 230, 191, 174 |
| RGB Percent | 90%, 75%, 68% |
| CMY | 0.0980, 0.2510, 0.3176 |
| CMYK | 0.00, 0.17, 0.24, 0.10 |
| HSL | 18°, 53%, 79% |
| HSV | 18°, 24%, 90% |
| XYZ | 58.9039, 57.1406, 47.9691 |
| YIQ | 200.7230, 28.7010, 2.9810 |

Conversions

Conversions Part 2

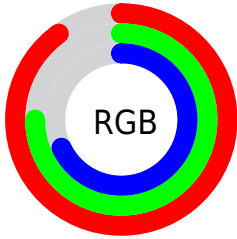
| Format | Color |
|-------------------------------------|--------------------------------|
| R _Y B | 230, 198, 174 |
| Decimal | 15122350 |
| CIE Lab | 80.26, 11.38, 13.78 |
| CIE LCh | 80, 17.874, 50.445 |
| Yxy | 57.1406, 0.3591, 0.3484 |
| Android (android.graphics.Color) | 4293312430 (0xFFE6BFAE) |
| YUV | 200.7230, -13.1744, 25.6759 |
| Hunter-Lab | 75.5914, 6.8096, 15.2895 |

Details

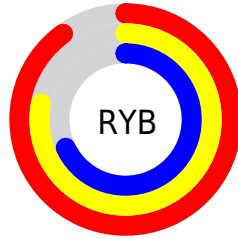
The Decimal color **15122350** is a light color, and the websafe version is hex **FFCCCC**. A complement of this color would be **11458022**, and the grayscale version is **13224393**.

A 20% lighter version of the original color is **16775141**, and **11438714** is the 20% darker color. If you saturate the color by 10%, you get **15118231**, and if you desaturate by 10%, it is **15126469**.

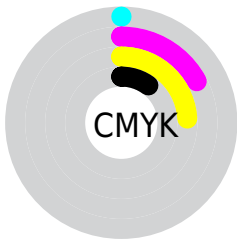
Distribution



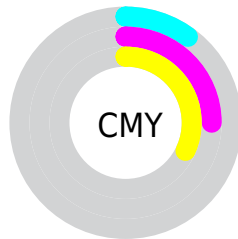
- Red (90%)
- Green (75%)
- Blue (68%)



- Red (90%)
- Yellow (78%)
- Blue (68%)



- Cyan (0%)
- Magenta (17%)
- Yellow (24%)
- Black (10%)




- Cyan (10%)
- Magenta (25%)
- Yellow (32%)

Brightness & Saturation Gradients

These gradients show how the Decimal color 15122350 changes by changing the brightness by 10 percent. The first figure shows a shift by +10% for each color and the second figure -10%.

Similar to the brightness gradients but the following saturation gradients show a change of the Decimal color 15122350 by changing the saturation by 10% instead.

 15122350

 15122350

16777215

 13280403

 16775141

 11438714

 9662561

 7886921

 6242354


 4598301

 3085572

 1638400

 0

 15122350

 15122350

 15118231

 15126469

 15114112

 15130588

 15109993

 15134707

 15105874

 15138815

 15101755

 15097636

 15093517

 15091200

Harmonies

Analogous

The Analogous color harmony consists of three colors that are next to each other on the color wheel.



15449276



15122350



14337191

Triad

The Triadic color harmony groups three colors that are evenly spaced from another and form a triangle on the color wheel.



15122350



10801601



12830182

Complementary

The Complementary color scheme is a pair of colors which are on the opposite of each other on the color wheel.



15122350



11458022

Split Complementary

Split-complementary colors differ from the complementary color scheme. The scheme consists of three colors, the original color and two neighbors of the complement color.



11455208



15122350



10277330

Square

The Square scheme is like the rectangle color scheme, but the four colors are evenly spaced on the color wheel.



15122350



11914929



10473184



14204892

Rectangle

The Rectangle color scheme consists of four colors that form a rectangle on the color wheel.



15122350



13551782



10473184



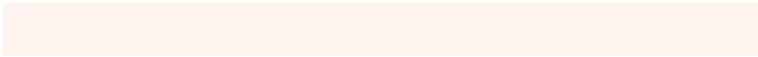
12371944

Sweetspot

The Sweet Spot groups the original color and five complimentary colors.



15122350



16774125



15118037



8419445



0



8421504

Same Dimension

The Same Dimension uses a secret algorithm to generate beautiful new colors.



15122350



16763829



15129518



7564135



11744768



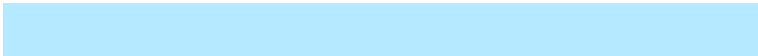
3346176

Inverse Universe

The Inverse Universe completely reimagines the original color for something new.



11458022



11921919



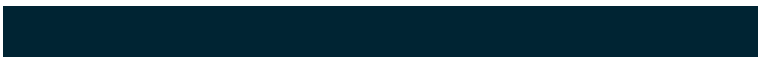
11450854



6778739



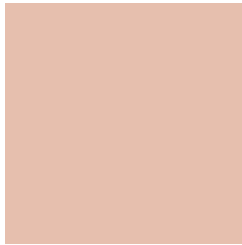
31923



9267

Previews

White Background



This preview shows how the Decimal color 15122350 looks on a white background.

Color Contrast Check

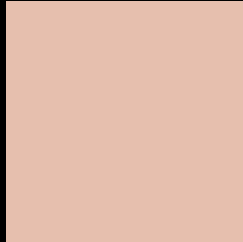
Large Text (above 18pt) WCAG AA × Fail

Any Text WCAG AA × Fail

Large Text (above 18pt) WCAG AAA × Fail

Any Text WCAG AAA × Fail

Black Background



This preview shows how the Decimal color 15122350 looks on a black background.

Color Contrast Check

Large Text (above 18pt) WCAG AA ✓ Pass

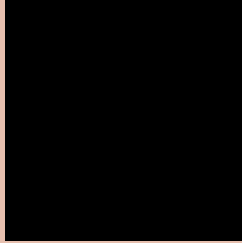
Any Text WCAG AA ✓ Pass

Large Text (above 18pt) WCAG AAA ✓ Pass

Any Text WCAG AAA ✓ Pass

If you want to check with other color combinations, try the [Color Contrast Checker](#).

Decimal 15122350 Background



This preview shows how black text looks on a background with the Decimal color 15122350.

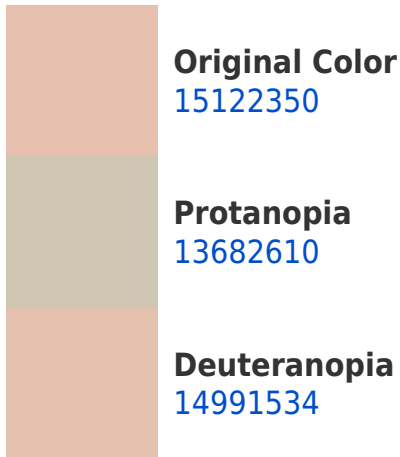


This preview shows how white text looks on a background with the Decimal color 15122350.

Color Blindness Simulation

Color vision deficiency is a very complex topic, and I could not describe the different causes any better than Wikipedia does, so if you want to learn more, you should check out their [article about color blindness](#).

Dichromacy





Tritanopia
15317961

Trichromacy



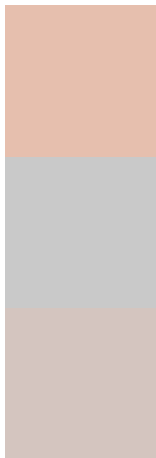
Original Color
15122350

Protanomaly
14206129

Deuteranomaly
15057070

Tritanomaly
15252671

Monochromacy



Original Color
15122350

Achromatopsia
13224393

Achromatomaly
13944255

CSS Examples

Text

The CSS property to change the color of the text to Decimal 15122350 is called "color". The color property can be set on classes, ids or directly on the HTML element.

This example shows how text in the color #E6BFAE looks like.

```
.text, #text, p{  
  color:#E6BFAE  
}
```

If you want to add a text shadow in that color use the text-shadow property, you can generate a text shadow directly with our [CSS Text Shadow Generator](#).

Here you see how black text with a 4 pixel #E6BFAE colored shadow looks like.

```
.shadow{ text-shadow: 4px 4px 2px #E6BFAE
}
```

Border

The CSS property to change the border of an element to Decimal 15122350 is called "border". The border property can be set on classes, ids or directly on the HTML element.

This example shows the color as border, it can be applied via the CSS property "border" or "border-color".

```
.border, #border, table{ border:4px solid
#E6BFAE }
```

If only the border color should be changed use the property `border-color`.

```
.border{ border-color:#E6BFAE }
```

If you want to add a box shadow in that color use:

Here you see how a box with a 4 pixel #E6BFAE colored shadow looks like.

```
.boxshadow{ -moz-box-shadow:4px 4px 4px  
4px #E6BFAE; -webkit-box-shadow:4px 4px  
4px 4px #E6BFAE; box-shadow:4px 4px 4px  
4px #E6BFAE }
```

Background

The CSS property to change the background color of an element to Decimal 15122350 is called "background". The background property can be set on classes, ids or directly on the HTML element.

```
.background, #background, body{  
background:#E6BFAE }
```

If only the background color should be changed can be used:

```
.background{ background-color:#E6BFAE }
```

This example shows the color as background, it is applied via the CSS property "background".

To optimize and compress your CSS code, you can use our [online CSS compressor and optimizer](#) based on csstidy. If you want to create a linear or radial gradient as background or border, check our [CSS Gradient Generator](#).

Hey! You found this booklet interesting? Support Converting Colors with the new Membership Option!

The pro membership hides all ads, plus gives you double the colors in the color bucket, and more awesome pro features!

[Learn more, Memberships starting at \\$2.50/m!](#)

**Follow me
on Twitter!**

@ConvertingColor