

Converting Colors

Decimal(15123911)

Have a look what the booklet for
Decimal(15123911) contains.

Decimal(15123911)	3
<i>Conversions</i>	4
<i>Details</i>	6
<i>Harmonies</i>	11
<i>Previews</i>	23
<i>Color Blindness Simulation</i>	26
<i>CSS Examples</i>	29

Color

Decimal(15123911)

Conversions

Conversions Part 1

Format	Color
Hex	E6C5C7
RGB	230, 197, 199
RGB Percent	90%, 77%, 78%
CMY	0.0980, 0.2275, 0.2196
CMYK	0.00, 0.14, 0.13, 0.10
HSL	356°, 40%, 84%
HSV	356°, 14%, 90%
XYZ	62.9082, 60.8790, 62.4680
YIQ	207.0950, 19.0260, 7.6180

Conversions

Conversions Part 2

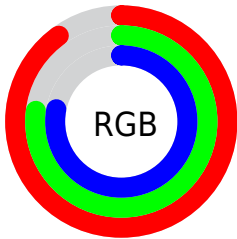
Format	Color
R_{YB}	230, 197, 199
Decimal	15123911
CIE _{Lab}	82.31, 11.97, 3.32
CIE _{LCh}	82, 12.425, 15.497
Yxy	60.8790, 0.3378, 0.3269
Android (android.graphics.Color)	4293313991 (0xFFE6C5C7)
YUV	207.0950, -3.9908, 20.0877
Hunter-Lab	78.0250, 7.3730, 7.1490

Details

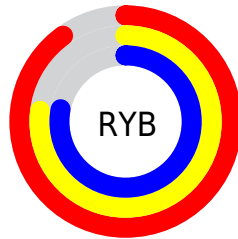
The Decimal color **15123911** is a light color, and the websafe version is hex **FFCCCC**. A complement of this color would be **12969700**, and the grayscale version is **13619151**.

A 20% lighter version of the original color is **16776959**, and **11440017** is the 20% darker color. If you saturate the color by 10%, you get **15118001**, and if you desaturate by 10%, it is **15129821**.

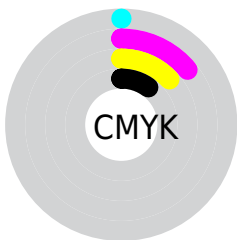
Distribution



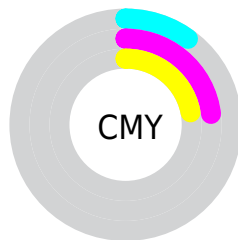
- Red (90%)
- Green (77%)
- Blue (78%)



- Red (90%)
- Yellow (77%)
- Blue (78%)



- Cyan (0%)
- Magenta (14%)
- Yellow (13%)
- Black (10%)



- Cyan (10%)
- Magenta (23%)
- Yellow (22%)

Brightness & Saturation Gradients

These gradients show how the Decimal color 15123911 changes by changing the brightness by 10 percent. The first figure shows a shift by +10% for each color and the second figure -10%.

Similar to the brightness gradients but the following saturation gradients show a change of the Decimal color 15123911 by changing the saturation by 10% instead.



 15123911

 15123911

 15118001

 15129821

 15112092

 15135730

 15106182

 15138815

 15100273

 15094363

 15088453

 15082544

 15076634

 15073294

Harmonies

Analogous

The Analogous color harmony consists of three colors that are next to each other on the color wheel.



14796243



15123911



14993341

Triad

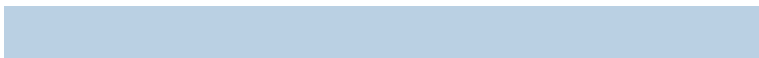
The Triadic color harmony groups three colors that are evenly spaced from another and form a triangle on the color wheel.



15123911



12767676



12243171

Complementary

The Complementary color scheme is a pair of colors which are on the opposite of each other on the color wheel.



15123911



12969700

Split Complementary

Split-complementary colors differ from the complementary color scheme. The scheme consists of three colors, the original color and two neighbors of the complement color.



11653853



15123911



12047303

Square

The Square scheme is like the rectangle color scheme, but the four colors are evenly spaced on the color wheel.



15123911



13684406



11588819



13159651

Rectangle

The Rectangle color scheme consists of four colors that form a rectangle on the color wheel.



15123911



14666168



11588819



11981282

Sweetspot

The Sweet Spot groups the original color and five complimentary colors.



15123911



16774645



14992870



8419706



0



8421504

Same Dimension

The Same Dimension uses a secret algorithm to generate beautiful new colors.



15123911



16766166



15127493



7563112



11730955



3342339

Inverse Universe

The Inverse Universe completely reimagines the original color for something new.



15123911



16766166



12966118



7563112



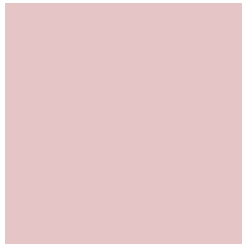
11730955



3342339

Previews

White Background



This preview shows how the Decimal color 15123911 looks on a white background.

Color Contrast Check

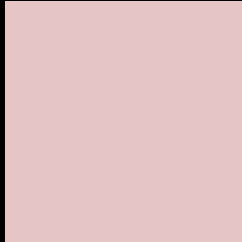
Large Text (above 18pt) WCAG AA × Fail

Any Text WCAG AA × Fail

Large Text (above 18pt) WCAG AAA × Fail

Any Text WCAG AAA × Fail

Black Background



This preview shows how the Decimal color 15123911 looks on a black background.

Color Contrast Check

Large Text (above 18pt) WCAG AA ✓ Pass

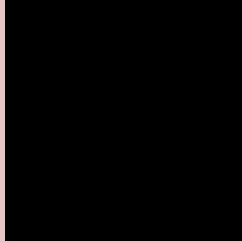
Any Text WCAG AA ✓ Pass

Large Text (above 18pt) WCAG AAA ✓ Pass

Any Text WCAG AAA ✓ Pass

If you want to check with other color combinations, try the [Color Contrast Checker](#).

Decimal 15123911 Background



This preview shows how black text looks on a background with the Decimal color 15123911.



This preview shows how white text looks on a background with the Decimal color 15123911.

Color Blindness Simulation

Color vision deficiency is a very complex topic, and I could not describe the different causes any better than Wikipedia does, so if you want to learn more, you should check out their [article about color blindness](#).


Dichromacy



Original Color
15123911

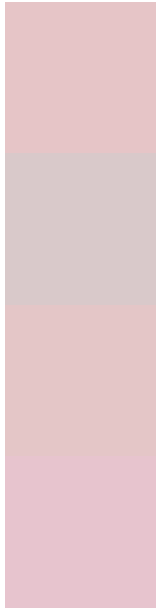
Protanopia
13749451

Deuteranopia
14927559



Tritanopia
15188946

Trichromacy



Original Color
15123911

Protanomaly
14272970

Deuteranomaly
14993095

Tritanomaly
15189198

Monochromacy



Original Color
15123911

Achromatopsia
13619151

Achromatomaly
14142412

CSS Examples

Text

The CSS property to change the color of the text to Decimal 15123911 is called "color". The color property can be set on classes, ids or directly on the HTML element.

This example shows how text in the color #E6C5C7 looks like.

```
.text, #text, p{  
  color:#E6C5C7  
}
```

If you want to add a text shadow in that color use the text-shadow property, you can generate a text shadow directly with our [CSS Text Shadow Generator](#).

Here you see how black text with a 4 pixel #E6C5C7 colored shadow looks like.

```
.shadow{ text-shadow: 4px 4px 2px #E6C5C7
}
```

Border

The CSS property to change the border of an element to Decimal 15123911 is called "border". The border property can be set on classes, ids or directly on the HTML element.

This example shows the color as border, it can be applied via the CSS property "border" or "border-color".

```
.border, #border, table{ border:4px solid
#E6C5C7 }
```

If only the border color should be changed use the property `border-color`.

```
.border{ border-color:#E6C5C7 }
```

If you want to add a box shadow in that color use:

Here you see how a box with a 4 pixel #E6C5C7 colored shadow looks like.

```
.boxshadow{ -moz-box-shadow:4px 4px 4px  
4px #E6C5C7; -webkit-box-shadow:4px 4px  
4px 4px #E6C5C7; box-shadow:4px 4px 4px  
4px #E6C5C7 }
```

Background

The CSS property to change the background color of an element to Decimal 15123911 is called "background". The background property can be set on classes, ids or directly on the HTML element.

```
.background, #background, body{  
background:#E6C5C7 }
```

If only the background color should be changed can be used:

```
.background{ background-color:#E6C5C7 }
```

This example shows the color as background, it is applied via the CSS property "background".

To optimize and compress your CSS code, you can use our [online CSS compressor and optimizer](#) based on csstidy. If you want to create a linear or radial gradient as background or border, check our [CSS Gradient Generator](#).

Hey! You found this booklet interesting? Support Converting Colors with the new Membership Option!

The pro membership hides all ads, plus gives you double the colors in the color bucket, and more awesome pro features!

[Learn more, Memberships starting at \\$2.50/m!](#)

**Follow me
on Twitter!**

@ConvertingColor