

Converting Colors

Decimal(15124417)

Have a look what the booklet for
Decimal(15124417) contains.

Decimal(15124417)	3
<i>Conversions</i>	4
<i>Details</i>	6
<i>Harmonies</i>	11
<i>Previews</i>	23
<i>Color Blindness Simulation</i>	26
<i>CSS Examples</i>	29

Color

Decimal(15124417)

Conversions

Conversions Part 1

Format	Color
Hex	E6C7C1
RGB	230, 199, 193
RGB Percent	90%, 78%, 76%
CMY	0.0980, 0.2196, 0.2431
CMYK	0.00, 0.13, 0.16, 0.10
HSL	10°, 43%, 83%
HSV	10°, 16%, 90%
XYZ	62.6822, 61.5201, 59.0229
YIQ	207.5850, 20.4020, 4.7060

Conversions

Conversions Part 2

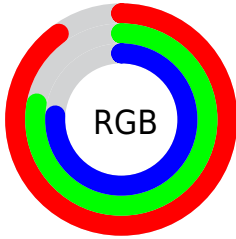
Format	Color
R _Y B	230, 200, 193
Decimal	15124417
CIE Lab	82.66, 9.97, 7.03
CIE LCh	83, 12.195, 35.176
Yxy	61.5201, 0.3421, 0.3358
Android (android.graphics.Color)	4293314497 (0xFFE6C7C1)
YUV	207.5850, -7.1904, 19.6580
Hunter-Lab	78.4347, 5.3899, 10.2880

Details

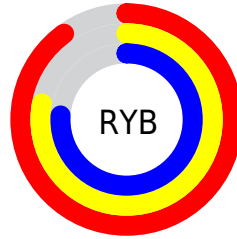
The Decimal color **15124417** is a light color, and the websafe version is hex **FFCCCC**. A complement of this color would be **12706022**, and the grayscale version is **13684944**.

A 20% lighter version of the original color is **16777209**, and **11440524** is the 20% darker color. If you saturate the color by 10%, you get **15119530**, and if you desaturate by 10%, it is **15129304**.

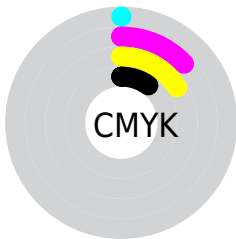
Distribution



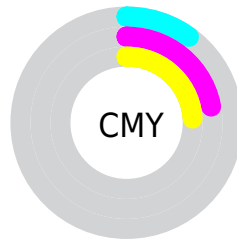
- Red (90%)
- Green (78%)
- Blue (76%)



- Red (90%)
- Yellow (78%)
- Blue (76%)



- Cyan (0%)
- Magenta (13%)
- Yellow (16%)
- Black (10%)



- Cyan (10%)
- Magenta (22%)
- Yellow (24%)

Brightness & Saturation Gradients

These gradients show how the Decimal color 15124417 changes by changing the brightness by 10 percent. The first figure shows a shift by +10% for each color and the second figure -10%.

Similar to the brightness gradients but the following saturation gradients show a change of the Decimal color 15124417 by changing the saturation by 10% instead.

 15124417

 15124417

16777215

 13282470

 16777209

 11440524

 9664370

 7954266

 6309698

 4730924

 3218200

 1900800


 0

 15124417

 15124417

 15119530


 15129304

 15114387

 15134447

 15109500

 15138815

 15104613

 15099726

 15094583

 15089696

 15084809

 15082752

Harmonies

Analogous

The Analogous color harmony consists of three colors that are next to each other on the color wheel.



15124172



15124417



14731961

Triad

The Triadic color harmony groups three colors that are evenly spaced from another and form a triangle on the color wheel.



15124417



12375236



12898020

Complementary

The Complementary color scheme is a pair of colors which are on the opposite of each other on the color wheel.



15124417



12706022

Split Complementary

Split-complementary colors differ from the complementary color scheme. The scheme consists of three colors, the original color and two neighbors of the complement color.



12112610



15124417



11785679

Square

The Square scheme is like the rectangle color scheme, but the four colors are evenly spaced on the color wheel.



15124417



13160891



11654362



13880032

Rectangle

The Rectangle color scheme consists of four colors that form a rectangle on the color wheel.



15124417



14273719



11654362



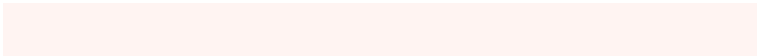
12636132

Sweetspot

The Sweet Spot groups the original color and five complimentary colors.



15124417



16774386



15122912



8419704



0



8421504

Same Dimension

The Same Dimension uses a secret algorithm to generate beautiful new colors.



15124417



16766671



15129025



7563623



11738368



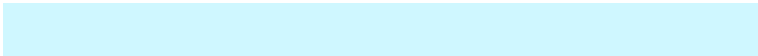
3344384

Inverse Universe

The Inverse Universe completely reimagines the original color for something new.



12706022



13629439



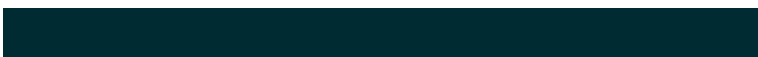
12701414



6779251



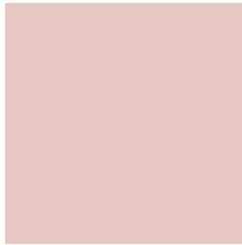
38579



11059

Previews

White Background



This preview shows how the Decimal color 15124417 looks on a white background.

Color Contrast Check

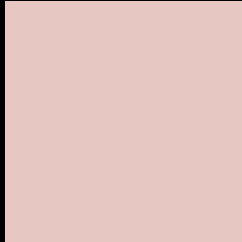
Large Text (above 18pt) WCAG AA × Fail

Any Text WCAG AA × Fail

Large Text (above 18pt) WCAG AAA × Fail

Any Text WCAG AAA × Fail

Black Background



This preview shows how the Decimal color 15124417 looks on a black background.

Color Contrast Check

Large Text (above 18pt) WCAG AA ✓ Pass

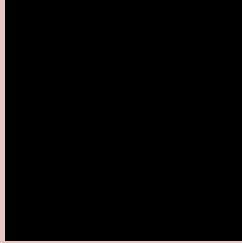
Any Text WCAG AA ✓ Pass

Large Text (above 18pt) WCAG AAA ✓ Pass

Any Text WCAG AAA ✓ Pass

If you want to check with other color combinations, try the [Color Contrast Checker](#).

Decimal 15124417 Background



This preview shows how black text looks on a background with the Decimal color 15124417.

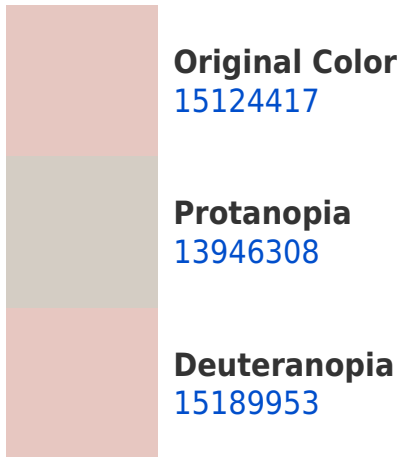


This preview shows how white text looks on a background with the Decimal color 15124417.

Color Blindness Simulation

Color vision deficiency is a very complex topic, and I could not describe the different causes any better than Wikipedia does, so if you want to learn more, you should check out their [article about color blindness](#).

Dichromacy





Tritanopia
15254739

Trichromacy



Original Color
15124417

Protanomaly
14404547

Deuteranomaly
15189953

Tritanomaly
15189452

Monochromacy



Original Color
15124417

Achromatopsia
13684944

Achromatomaly
14208459

CSS Examples

Text

The CSS property to change the color of the text to Decimal 15124417 is called "color". The color property can be set on classes, ids or directly on the HTML element.

This example shows how text in the color #E6C7C1 looks like.

```
.text, #text, p{  
    color:#E6C7C1  
}
```

If you want to add a text shadow in that color use the text-shadow property, you can generate a text shadow directly with our [CSS Text Shadow Generator](#).

Here you see how black text with a 4 pixel #E6C7C1 colored shadow looks like.

```
.shadow{ text-shadow: 4px 4px 2px #E6C7C1
}
```

Border

The CSS property to change the border of an element to Decimal 15124417 is called "border". The border property can be set on classes, ids or directly on the HTML element.

This example shows the color as border, it can be applied via the CSS property "border" or "border-color".

```
.border, #border, table{ border:4px solid
#E6C7C1 }
```

If only the border color should be changed use the property `border-color`.

```
.border{ border-color:#E6C7C1 }
```

If you want to add a box shadow in that color use:

Here you see how a box with a 4 pixel #E6C7C1 colored shadow looks like.

```
.boxshadow{ -moz-box-shadow:4px 4px 4px  
4px #E6C7C1; -webkit-box-shadow:4px 4px  
4px 4px #E6C7C1; box-shadow:4px 4px 4px  
4px #E6C7C1 }
```

Background

The CSS property to change the background color of an element to Decimal 15124417 is called "background". The background property can be set on classes, ids or directly on the HTML element.

```
.background, #background, body{  
background:#E6C7C1 }
```

If only the background color should be changed can be used:

```
.background{ background-color:#E6C7C1 }
```

This example shows the color as background, it is applied via the CSS property "background".

To optimize and compress your CSS code, you can use our [online CSS compressor and optimizer](#) based on csstidy. If you want to create a linear or radial gradient as background or border, check our [CSS Gradient Generator](#).

Hey! You found this booklet interesting? Support Converting Colors with the new Membership Option!

The pro membership hides all ads, plus gives you double the colors in the color bucket, and more awesome pro features!

[Learn more, Memberships starting at \\$2.50/m!](#)

**Follow me
on Twitter!**

@ConvertingColor