

Converting Colors

Decimal(15126221)

Have a look what the booklet for
Decimal(15126221) contains.

| | |
|--|----|
| Decimal(15126221) | 3 |
| <i>Conversions</i> | 4 |
| <i>Details</i> | 6 |
| <i>Harmonies</i> | 11 |
| <i>Previews</i> | 23 |
| <i>Color Blindness Simulation</i> | 26 |
| <i>CSS Examples</i> | 29 |

Color

Decimal(15126221)

Conversions

Conversions Part 1

| Format | Color |
|-------------|---------------------------|
| Hex | E6CECD |
| RGB | 230, 206, 205 |
| RGB Percent | 90%, 81%, 80% |
| CMY | 0.0980, 0.1922, 0.1961 |
| CMYK | 0.00, 0.10, 0.11, 0.10 |
| HSL | 2°, 33%, 85% |
| HSV | 2°, 11%, 90% |
| XYZ | 65.7239, 65.3734, 66.9119 |
| YIQ | 213.0620, 14.6250, 4.7770 |

Conversions

Conversions Part 2

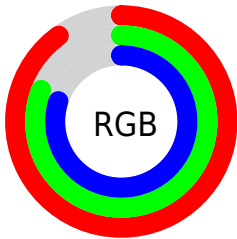
| Format | Color |
|-------------------------------------|-------------------------------|
| R _Y B | 230, 206, 205 |
| Decimal | 15126221 |
| CIE Lab | 84.68, 8.20, 3.54 |
| CIE LCh | 85, 8.930, 23.365 |
| Yxy | 65.3734, 0.3319, 0.3302 |
| Android (android.graphics.Color) | 4293316301 (0xFFE6CECD) |
| YUV | 213.0620, -3.9746, 14.8546 |
| Hunter-Lab | 80.8538, 3.6037, 7.5312 |

Details

The Decimal color **15126221** is a light color, and the websafe version is hex **CCCCCC**. A complement of this color would be **13493734**, and the grayscale version is **14013909**.

A 20% lighter version of the original color is **16777215**, and **11442327** is the 20% darker color. If you saturate the color by 10%, you get **15120566**, and if you desaturate by 10%, it is **15131876**.

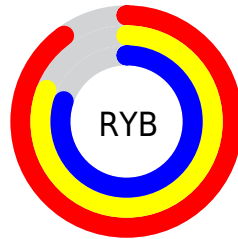
Distribution



Red (90%)

Green (81%)

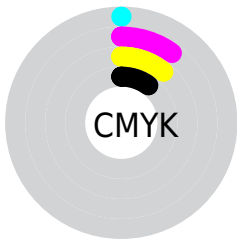
Blue (80%)



Red (90%)

Yellow (81%)

Blue (80%)

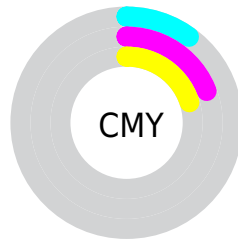


Cyan (0%)

Magenta (10%)

Yellow (11%)

Black (10%)



Cyan (10%)

Magenta (19%)

Yellow (20%)

Brightness & Saturation Gradients

These gradients show how the Decimal color 15126221 changes by changing the brightness by 10 percent. The first figure shows a shift by +10% for each color and the second figure -10%.

Similar to the brightness gradients but the following saturation gradients show a change of the Decimal color 15126221 by changing the saturation by 10% instead.

15126221

15126221

16777215

13284018

11442327

9731709

8021348

6376780

4798006


3285280

1968649


0


 15126221

 15126221

 15120566

 15131876

 15114911

 15137531

 15109256

 15138815

 15103601

 15097946

 15092291

 15086380

 15080725

 15075584

Harmonies

Analogous

The Analogous color harmony consists of three colors that are next to each other on the color wheel.



14995158



15126221



14930118

Triad

The Triadic color harmony groups three colors that are evenly spaced from another and form a triangle on the color wheel.



15126221



13227977



13227492

Complementary

The Complementary color scheme is a pair of colors which are on the opposite of each other on the color wheel.



15126221



13493734

Split Complementary

Split-complementary colors differ from the complementary color scheme. The scheme consists of three colors, the original color and two neighbors of the complement color.



12703713



15126221



12769489

Square

The Square scheme is like the rectangle color scheme, but the four colors are evenly spaced on the color wheel.



15126221



13882820



12572890



13882083

Rectangle

The Rectangle color scheme consists of four colors that form a rectangle on the color wheel.



15126221



14668227



12572890



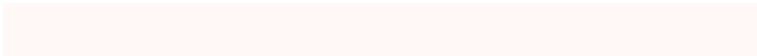
13031139

Sweetspot

The Sweet Spot groups the original color and five complimentary colors.



15126221



16775415



15125989



8420218



0



8421504

Same Dimension

The Same Dimension uses a secret algorithm to generate beautiful new colors.



15126221



16768990



15129293



7563367



11732736



3342848

Inverse Universe

The Inverse Universe completely reimagines the original color for something new.



13493734



14614271



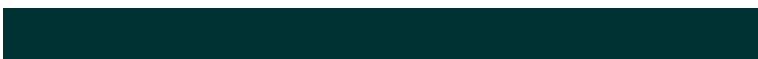
13490662



6779507



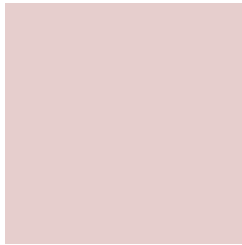
43955



12595

Previews

White Background



This preview shows how the Decimal color 15126221 looks on a white background.

Color Contrast Check

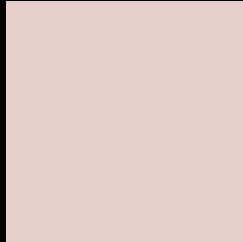
Large Text (above 18pt) WCAG AA × Fail

Any Text WCAG AA × Fail

Large Text (above 18pt) WCAG AAA × Fail

Any Text WCAG AAA × Fail

Black Background



This preview shows how the Decimal color 15126221 looks on a black background.

Color Contrast Check

Large Text (above 18pt) WCAG AA ✓ Pass

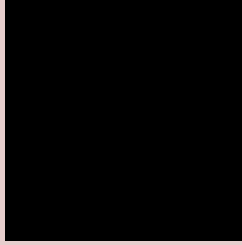
Any Text WCAG AA ✓ Pass

Large Text (above 18pt) WCAG AAA ✓ Pass

Any Text WCAG AAA ✓ Pass

If you want to check with other color combinations, try the [Color Contrast Checker](#).

Decimal 15126221 Background



This preview shows how black text looks on a background with the Decimal color 15126221.

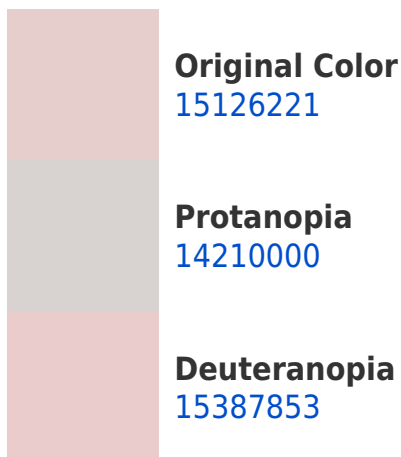


This preview shows how white text looks on a background with the Decimal color 15126221.

Color Blindness Simulation

Color vision deficiency is a very complex topic, and I could not describe the different causes any better than Wikipedia does, so if you want to learn more, you should check out their [article about color blindness](#).

Dichromacy





Tritanopia
15256796

Trichromacy



Original Color
15126221

Protanomaly
14537167

Deuteranomaly
15322573

Tritanomaly
15191511

Monochromacy



Original Color
15126221

Achromatopsia
14013909

Achromatomaly
14406354

CSS Examples

Text

The CSS property to change the color of the text to Decimal 15126221 is called "color". The color property can be set on classes, ids or directly on the HTML element.

This example shows how text in the color #E6CECD looks like.

```
.text, #text, p{  
    color:#E6CECD  
}
```

If you want to add a text shadow in that color use the text-shadow property, you can generate a text shadow directly with our [CSS Text Shadow Generator](#).

Here you see how black text with a 4 pixel #E6CECD colored shadow looks like.

```
.shadow{ text-shadow: 4px 4px 2px #E6CECD
}
```

Border

The CSS property to change the border of an element to Decimal 15126221 is called "border". The border property can be set on classes, ids or directly on the HTML element.

This example shows the color as border, it can be applied via the CSS property "border" or "border-color".

```
.border, #border, table{ border:4px solid
#E6CECD }
```

If only the border color should be changed use the property `border-color`.

```
.border{ border-color:#E6CECD }
```

If you want to add a box shadow in that color use:

Here you see how a box with a 4 pixel #E6CECD colored shadow looks like.

```
.boxshadow{ -moz-box-shadow:4px 4px 4px  
4px #E6CECD; -webkit-box-shadow:4px 4px  
4px 4px #E6CECD; box-shadow:4px 4px 4px  
4px #E6CECD }
```

Background

The CSS property to change the background color of an element to Decimal 15126221 is called "background". The background property can be set on classes, ids or directly on the HTML element.

```
.background, #background, body{  
background:#E6CECD }
```

If only the background color should be changed can be used:

```
.background{ background-color:#E6CECD }
```

This example shows the color as background, it is applied via the CSS property "background".

To optimize and compress your CSS code, you can use our [online CSS compressor and optimizer](#) based on csstidy. If you want to create a linear or radial gradient as background or border, check our [CSS Gradient Generator](#).

Hey! You found this booklet interesting? Support Converting Colors with the new Membership Option!

The pro membership hides all ads, plus gives you double the colors in the color bucket, and more awesome pro features!

[Learn more, Memberships starting at \\$2.50/m!](#)

**Follow me
on Twitter!**

@ConvertingColor