

Converting Colors

Decimal(15127507)

Have a look what the booklet for
Decimal(15127507) contains.

Decimal(15127507)	3
<i>Conversions</i>	4
<i>Details</i>	6
<i>Harmonies</i>	11
<i>Previews</i>	23
<i>Color Blindness Simulation</i>	26
<i>CSS Examples</i>	29

Color

Decimal(15127507)

Conversions

Conversions Part 1

Format	Color
Hex	E6D3D3
RGB	230, 211, 211
RGB Percent	90%, 83%, 83%
CMY	0.0980, 0.1725, 0.1725
CMYK	0.00, 0.08, 0.08, 0.10
HSL	0°, 28%, 86%
HSV	0°, 8%, 90%
XYZ	67.6853, 68.1147, 71.2081
YIQ	216.6810, 11.3240, 4.0280

Conversions

Conversions Part 2

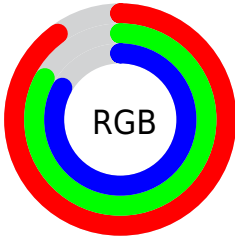
Format	Color
R _Y B	230, 211, 211
Decimal	15127507
CIE Lab	86.06, 6.57, 2.37
CIE LCh	86, 6.985, 19.840
Yxy	68.1147, 0.3270, 0.3290
Android (android.graphics.Color)	4293317587 (0xFFE6D3D3)
YUV	216.6810, -2.8007, 11.6808
Hunter-Lab	82.5316, 1.9599, 6.6169

Details

The Decimal color **15127507** is a light color, and the websafe version is hex **CCCCCC**. A complement of this color would be **13887206**, and the grayscale version is **14277081**.

A 20% lighter version of the original color is **16777215**, and **11443357** is the 20% darker color. If you saturate the color by 10%, you get **15121596**, and if you desaturate by 10%, it is **15133418**.

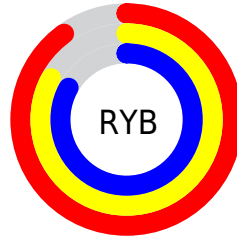
Distribution



Red (90%)

Green (83%)

Blue (83%)



Red (90%)

Yellow (83%)

Blue (83%)

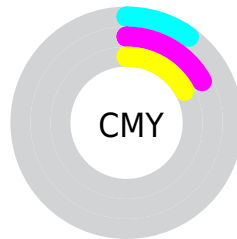


Cyan (0%)

Magenta (8%)

Yellow (8%)

Black (10%)



Cyan (10%)

Magenta (17%)

Yellow (17%)

Brightness & Saturation Gradients

These gradients show how the Decimal color 15127507 changes by changing the brightness by 10 percent. The first figure shows a shift by +10% for each color and the second figure -10%.

Similar to the brightness gradients but the following saturation gradients show a change of the Decimal color 15127507 by changing the saturation by 10% instead.



 15127507

 15127507

 15121596

 15133418

 15115685

 15138815

 15109774

 15103863

 15097952

 15092041

 15086130

 15080219

 15074308

Harmonies

Analogous

The Analogous color harmony consists of three colors that are next to each other on the color wheel.



14996442



15127507



14996685

Triad

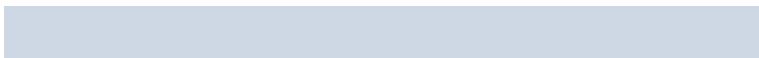
The Triadic color harmony groups three colors that are evenly spaced from another and form a triangle on the color wheel.



15127507



13687503



13555940

Complementary

The Complementary color scheme is a pair of colors which are on the opposite of each other on the color wheel.



15127507



13887206

Split Complementary

Split-complementary colors differ from the complementary color scheme. The scheme consists of three colors, the original color and two neighbors of the complement color.



13228769



15127507



13294549

Square

The Square scheme is like the rectangle color scheme, but the four colors are evenly spaced on the color wheel.



15127507



14211275



13097947



14079716

Rectangle

The Rectangle color scheme consists of four colors that form a rectangle on the color wheel.



15127507



14800331



13097947



13425123

Sweetspot

The Sweet Spot groups the original color and five complimentary colors.



15127507



16775930



15127526



8420733



0



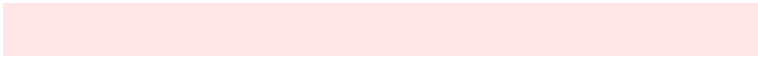
8421504

Same Dimension

The Same Dimension uses a secret algorithm to generate beautiful new colors.



15127507



16770790



15129811



7563111



11730944



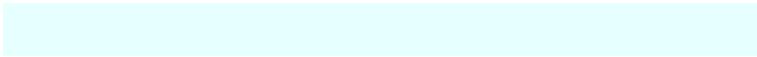
3342336

Inverse Universe

The Inverse Universe completely reimagines the original color for something new.



13887206



15138815



13884646



6779763



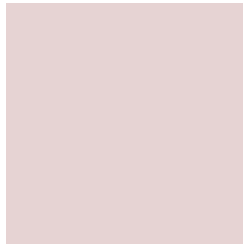
46003



13107

Previews

White Background



This preview shows how the Decimal color 15127507 looks on a white background.

Color Contrast Check

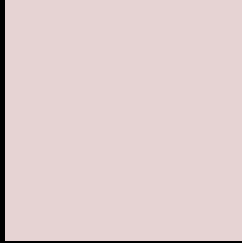
Large Text (above 18pt) WCAG AA × Fail

Any Text WCAG AA × Fail

Large Text (above 18pt) WCAG AAA × Fail

Any Text WCAG AAA × Fail

Black Background



This preview shows how the Decimal color 15127507 looks on a black background.

Color Contrast Check

Large Text (above 18pt) WCAG AA ✓ Pass

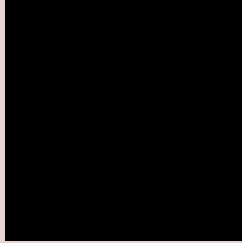
Any Text WCAG AA ✓ Pass

Large Text (above 18pt) WCAG AAA ✓ Pass

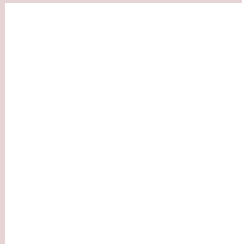
Any Text WCAG AAA ✓ Pass

If you want to check with other color combinations, try the [Color Contrast Checker](#).

Decimal 15127507 Background



This preview shows how black text looks on a background with the Decimal color 15127507.

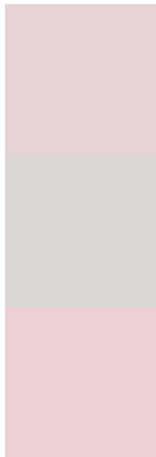


This preview shows how white text looks on a background with the Decimal color 15127507.

Color Blindness Simulation

Color vision deficiency is a very complex topic, and I could not describe the different causes any better than Wikipedia does, so if you want to learn more, you should check out their [article about color blindness](#).


Dichromacy



Original Color
15127507

Protanopia
14472917

Deuteranopia
15585492



Tritanopia
15258081

Trichromacy



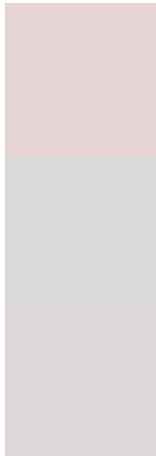
Original Color
15127507

Protanomaly
14734804

Deuteranomaly
15389140

Tritanomaly
15192796

Monochromacy



Original Color
15127507

Achromatopsia
14277081

Achromatomaly
14604247

CSS Examples

Text

The CSS property to change the color of the text to Decimal 15127507 is called "color". The color property can be set on classes, ids or directly on the HTML element.

This example shows how text in the color #E6D3D3 looks like.

```
.text, #text, p{  
    color:#E6D3D3  
}
```

If you want to add a text shadow in that color use the text-shadow property, you can generate a text shadow directly with our [CSS Text Shadow Generator](#).

Here you see how black text with a 4 pixel #E6D3D3 colored shadow looks like.

```
.shadow{ text-shadow: 4px 4px 2px #E6D3D3
}
```

Border

The CSS property to change the border of an element to Decimal 15127507 is called "border". The border property can be set on classes, ids or directly on the HTML element.

This example shows the color as border, it can be applied via the CSS property "border" or "border-color".

```
.border, #border, table{ border:4px solid
#E6D3D3 }
```

If only the border color should be changed use the property `border-color`.

```
.border{ border-color:#E6D3D3 }
```

If you want to add a box shadow in that color use:

Here you see how a box with a 4 pixel #E6D3D3 colored shadow looks like.

```
.boxshadow{ -moz-box-shadow:4px 4px 4px  
4px #E6D3D3; -webkit-box-shadow:4px 4px  
4px 4px #E6D3D3; box-shadow:4px 4px 4px  
4px #E6D3D3 }
```

Background

The CSS property to change the background color of an element to Decimal 15127507 is called "background". The background property can be set on classes, ids or directly on the HTML element.

```
.background, #background, body{  
background:#E6D3D3 }
```

If only the background color should be changed can be used:

```
.background{ background-color:#E6D3D3 }
```

This example shows the color as background, it is applied via the CSS property "background".

To optimize and compress your CSS code, you can use our [online CSS compressor and optimizer](#) based on csstidy. If you want to create a linear or radial gradient as background or border, check our [CSS Gradient Generator](#).

Hey! You found this booklet interesting? Support Converting Colors with the new Membership Option!

The pro membership hides all ads, plus gives you double the colors in the color bucket, and more awesome pro features!

[Learn more, Memberships starting at \\$2.50/m!](#)

**Follow me
on Twitter!**

@ConvertingColor