

Converting Colors

Decimal(15162243)

Have a look what the booklet for
Decimal(15162243) contains.

Decimal(15162243)	3
<i>Conversions</i>	4
<i>Details</i>	6
<i>Harmonies</i>	11
<i>Previews</i>	23
<i>Color Blindness Simulation</i>	26
<i>CSS Examples</i>	29

Color

Decimal(15162243)

Conversions

Conversions Part 1

Format	Color
Hex	E75B83
RGB	231, 91, 131
RGB Percent	91%, 36%, 51%
CMY	0.0941, 0.6431, 0.4863
CMYK	0.00, 0.61, 0.43, 0.09
HSL	343°, 74%, 63%
HSV	343°, 61%, 91%
XYZ	40.7928, 26.1098, 24.3624
YIQ	137.4200, 70.6000, 42.1200

Conversions

Conversions Part 2

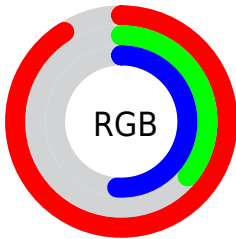
Format	Color
R_{YB}	231, 91, 131
Decimal	15162243
CIE Lab	58.14, 57.58, 6.41
CIE LCh	58, 57.936, 6.354
Yxy	26.1098, 0.4470, 0.2861
Android (android.graphics.Color)	4293352323 (0xFFE75B83)
YUV	137.4200, -3.1651, 82.0697
Hunter-Lab	51.0977, 53.0807, 7.5001

Details

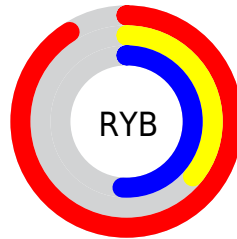
The Decimal color **15162243** is a light color, and the websafe version is hex **FF6699**. The color can be described as light muted rose. A complement of this color would be **6023103**, and the grayscale version is **9013641**.

A 20% lighter version of the original color is **16749496**, and **11214418** is the 20% darker color. If you saturate the color by 10%, you get **15156338**, and if you desaturate by 10%, it is **15168147**.

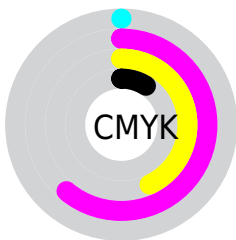
Distribution



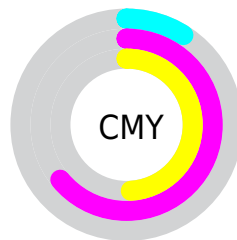
- Red (91%)
- Green (36%)
- Blue (51%)



- Red (91%)
- Yellow (36%)
- Blue (51%)



- Cyan (0%)
- Magenta (61%)
- Yellow (43%)
- Black (9%)





- Cyan (9%)
- Magenta (64%)
- Yellow (49%)

Brightness & Saturation Gradients

These gradients show how the Decimal color 15162243 changes by changing the brightness by 10 percent. The first figure shows a shift by +10% for each color and the second figure -10%.

Similar to the brightness gradients but the following saturation gradients show a change of the Decimal color 15162243 by changing the saturation by 10% instead.

 15162243

 15162243

16777215

 13188714

 16749496

 11214418

 16756691

 9240635

 16764144

 7340070

 16771583

 5439505

 3735554

 1048576

 0

 15162243

 15162243

15156338

15168147

15150434

15174052

15144529

15179956

15138882

15185861

15192021

15197926

15203831

15204351

Harmonies

Analogous

The Analogous color harmony consists of three colors that are next to each other on the color wheel.



13722805



15162243



14771794

Triad

The Triadic color harmony groups three colors that are evenly spaced from another and form a triangle on the color wheel.



15162243



6724147



40168

Complementary

The Complementary color scheme is a pair of colors which are on the opposite of each other on the color wheel.



15162243



6023103

Split Complementary

Split-complementary colors differ from the complementary color scheme. The scheme consists of three colors, the original color and two neighbors of the complement color.



41927



15162243



41313

Square

The Square scheme is like the rectangle color scheme, but the four colors are evenly spaced on the color wheel.



15162243



10259737



42133



2526961

Rectangle

The Rectangle color scheme consists of four colors that form a rectangle on the color wheel.



15162243



13726519



42133



40928

Sweetspot

The Sweet Spot groups the original color and five complimentary colors.



15162243



16765406



12409831



8414059



0



8421504

Same Dimension

The Same Dimension uses a secret algorithm to generate beautiful new colors.



15162243



16729466



15169371



7563115



11730995



3342351

Inverse Universe

The Inverse Universe completely reimagines the original color for something new.



15162243



16729466



6015975



7563115



11730995



3342351

Previews

White Background



This preview shows how the Decimal color 15162243 looks on a white background.

Color Contrast Check

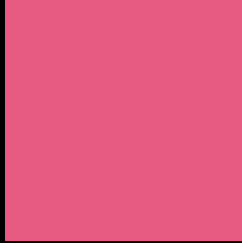
Large Text (above 18pt) WCAG AA ✓ Pass

Any Text WCAG AA × Fail

Large Text (above 18pt) WCAG AAA × Fail

Any Text WCAG AAA × Fail

Black Background



This preview shows how the Decimal color 15162243 looks on a black background.

Color Contrast Check

Large Text (above 18pt) WCAG AA ✓ Pass

Any Text WCAG AA ✓ Pass

Large Text (above 18pt) WCAG AAA ✓ Pass

Any Text WCAG AAA × Fail

If you want to check with other color combinations, try the [Color Contrast Checker](#).

Decimal 15162243 Background



This preview shows how black text looks on a background with the Decimal color 15162243.

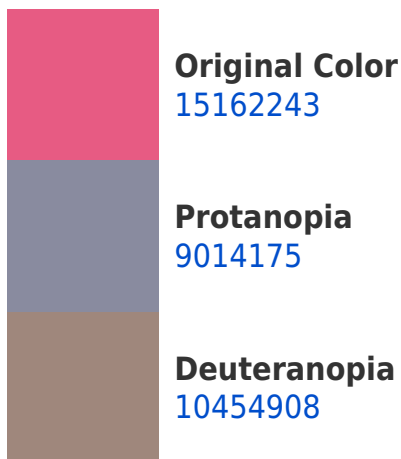


This preview shows how white text looks on a background with the Decimal color 15162243.

Color Blindness Simulation

Color vision deficiency is a very complex topic, and I could not describe the different causes any better than Wikipedia does, so if you want to learn more, you should check out their [article about color blindness](#).

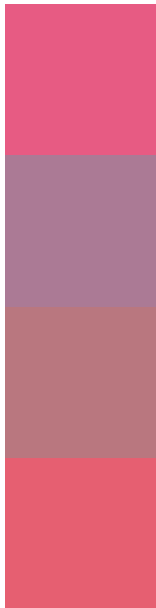
Dichromacy





Tritanopia
15032679

Trichromacy



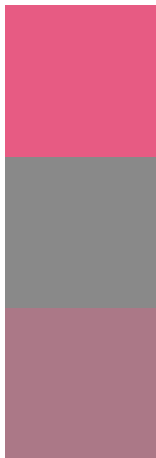
Original Color
15162243

Protanomaly
11238037

Deuteranomaly
12154751

Tritanomaly
15097713

Monochromacy



Original Color
15162243

Achromatopsia
9013641

Achromatomaly
11237511

CSS Examples

Text

The CSS property to change the color of the text to Decimal 15162243 is called "color". The color property can be set on classes, ids or directly on the HTML element.

This example shows how text in the color #E75B83 looks like.

```
.text, #text, p{  
    color:#E75B83  
}
```

If you want to add a text shadow in that color use the text-shadow property, you can generate a text shadow directly with our [CSS Text Shadow Generator](#).

Here you see how black text with a 4 pixel #E75B83 colored shadow looks like.

```
.shadow{ text-shadow: 4px 4px 2px #E75B83
}
```

Border

The CSS property to change the border of an element to Decimal 15162243 is called "border". The border property can be set on classes, ids or directly on the HTML element.

This example shows the color as border, it can be applied via the CSS property "border" or "border-color".

```
.border, #border, table{ border:4px solid
#E75B83 }
```

If only the border color should be changed use the property `border-color`.

```
.border{ border-color:#E75B83 }
```

If you want to add a box shadow in that color use:

Here you see how a box with a 4 pixel #E75B83 colored shadow looks like.

```
.boxshadow{ -moz-box-shadow:4px 4px 4px  
4px #E75B83; -webkit-box-shadow:4px 4px  
4px 4px #E75B83; box-shadow:4px 4px 4px  
4px #E75B83 }
```

Background

The CSS property to change the background color of an element to Decimal 15162243 is called "background". The background property can be set on classes, ids or directly on the HTML element.

```
.background, #background, body{  
background:#E75B83 }
```

If only the background color should be changed can be used:

```
.background{ background-color:#E75B83 }
```

This example shows the color as background, it is applied via the CSS property "background".

To optimize and compress your CSS code, you can use our [online CSS compressor and optimizer](#) based on csstidy. If you want to create a linear or radial gradient as background or border, check our [CSS Gradient Generator](#).

Hey! You found this booklet interesting? Support Converting Colors with the new Membership Option!

The pro membership hides all ads, plus gives you double the colors in the color bucket, and more awesome pro features!

[Learn more, Memberships starting at \\$2.50/m!](#)

**Follow me
on Twitter!**

@ConvertingColor