

Converting Colors

Decimal(15173021)

Have a look what the booklet for
Decimal(15173021) contains.

Decimal(15173021)	3
<i>Conversions</i>	4
<i>Details</i>	6
<i>Harmonies</i>	11
<i>Previews</i>	23
<i>Color Blindness Simulation</i>	26
<i>CSS Examples</i>	29

Color

Decimal(15173021)

Conversions

Conversions Part 1

Format	Color
Hex	E7859D
RGB	231, 133, 157
RGB Percent	91%, 52%, 62%
CMY	0.0941, 0.4784, 0.3843
CMYK	0.00, 0.42, 0.32, 0.09
HSL	345°, 67%, 71%
HSV	345°, 42%, 91%
XYZ	47.4283, 36.1983, 36.3855
YIQ	165.0380, 50.7040, 28.2400

Conversions

Conversions Part 2

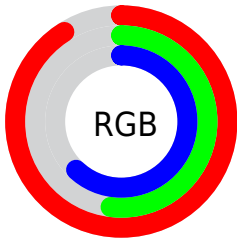
Format	Color
R _Y B	231, 133, 157
Decimal	15173021
CIE Lab	66.67, 40.24, 3.75
CIE LCh	67, 40.418, 5.321
Yxy	36.1983, 0.3952, 0.3016
Android (android.graphics.Color)	4293363101 (0xFFE7859D)
YUV	165.0380, -3.9627, 57.8487
Hunter-Lab	60.1650, 35.4235, 6.2592

Details

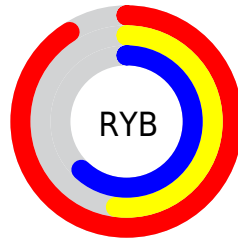
The Decimal color **15173021** is a light color, and the websafe version is hex **FF9999**. A complement of this color would be **8775631**, and the grayscale version is **10855845**.

A 20% lighter version of the original color is **16760019**, and **11358570** is the 20% darker color. If you saturate the color by 10%, you get **15167116**, and if you desaturate by 10%, it is **15178926**.

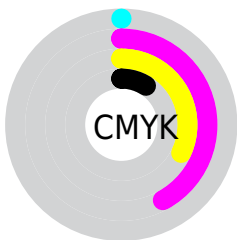
Distribution



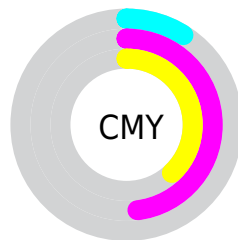
- Red (91%)
- Green (52%)
- Blue (62%)



- Red (91%)
- Yellow (52%)
- Blue (62%)



- Cyan (0%)
- Magenta (42%)
- Yellow (32%)
- Black (9%)





- Cyan (9%)
- Magenta (48%)
- Yellow (38%)

Brightness & Saturation Gradients

These gradients show how the Decimal color 15173021 changes by changing the brightness by 10 percent. The first figure shows a shift by +10% for each color and the second figure -10%.

Similar to the brightness gradients but the following saturation gradients show a change of the Decimal color 15173021 by changing the saturation by 10% instead.

 15173021

 15173021

16777215

 13265795

 16760019

 11358570

 16767216

 9516882

 16774655

 7675195


 5898277

 4194320

 2555905

 0

 15173021

 15173021

15167116

15178926

15161210

15184832

15155305

15190737

15149399

15196643

15143494

15202804

15138873

15204351

Harmonies

Analogous

The Analogous color harmony consists of three colors that are next to each other on the color wheel.



13994689



15173021



15043194

Triad

The Triadic color harmony groups three colors that are evenly spaced from another and form a triangle on the color wheel.



15173021



9219173



2338531

Complementary

The Complementary color scheme is a pair of colors which are on the opposite of each other on the color wheel.



15173021



8775631

Split Complementary

Split-complementary colors differ from the complementary color scheme. The scheme consists of three colors, the original color and two neighbors of the complement color.



46283



15173021



6271875

Square

The Square scheme is like the rectangle color scheme, but the four colors are evenly spaced on the color wheel.



15173021



11772504



1619368



7775466

Rectangle

The Rectangle color scheme consists of four colors that form a rectangle on the color wheel.



15173021



14324072



1619368



45277

Sweetspot

The Sweet Spot groups the original color and five complimentary colors.



15173021



16768742



13600231



8416112



0



8421504

Same Dimension

The Same Dimension uses a secret algorithm to generate beautiful new colors.



15173021



16743837



15179397



7563114



11730988



3342348

Inverse Universe

The Inverse Universe completely reimagines the original color for something new.



15173021



16743837



8769511



7563114



11730988



3342348

Previews

White Background



This preview shows how the Decimal color 15173021 looks on a white background.

Color Contrast Check

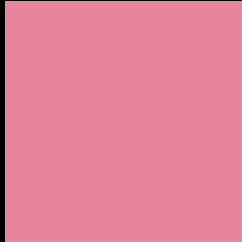
Large Text (above 18pt) WCAG AA × Fail

Any Text WCAG AA × Fail

Large Text (above 18pt) WCAG AAA × Fail

Any Text WCAG AAA × Fail

Black Background



This preview shows how the Decimal color 15173021 looks on a black background.

Color Contrast Check

Large Text (above 18pt) WCAG AA ✓ Pass

Any Text WCAG AA ✓ Pass

Large Text (above 18pt) WCAG AAA ✓ Pass

Any Text WCAG AAA ✓ Pass

If you want to check with other color combinations, try the [Color Contrast Checker](#).

Decimal 15173021 Background



This preview shows how black text looks on a background with the Decimal color 15173021.




This preview shows how white text looks on a background with the Decimal color 15173021.

Color Blindness Simulation

Color vision deficiency is a very complex topic, and I could not describe the different causes any better than Wikipedia does, so if you want to learn more, you should check out their [article about color blindness](#).

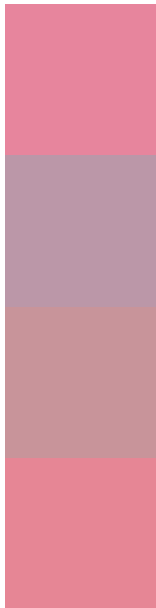
Dichromacy





Tritanopia
15107985

Trichromacy



Original Color
15173021

Protanomaly
12294056

Deuteranomaly
13145242

Tritanomaly
15107733

Monochromacy



Original Color
15173021

Achromatopsia
10855845

Achromatomaly
12425634

CSS Examples

Text

The CSS property to change the color of the text to Decimal 15173021 is called "color". The color property can be set on classes, ids or directly on the HTML element.

This example shows how text in the color #E7859D looks like.

```
.text, #text, p{  
    color:#E7859D  
}
```

If you want to add a text shadow in that color use the text-shadow property, you can generate a text shadow directly with our [CSS Text Shadow Generator](#).

Here you see how black text with a 4 pixel #E7859D colored shadow looks like.

```
.shadow{ text-shadow: 4px 4px 2px #E7859D
}
```

Border

The CSS property to change the border of an element to Decimal 15173021 is called "border". The border property can be set on classes, ids or directly on the HTML element.

This example shows the color as border, it can be applied via the CSS property "border" or "border-color".

```
.border, #border, table{ border:4px solid
#E7859D }
```

If only the border color should be changed use the property `border-color`.

```
.border{ border-color:#E7859D }
```

If you want to add a box shadow in that color use:

Here you see how a box with a 4 pixel #E7859D colored shadow looks like.

```
.boxshadow{ -moz-box-shadow:4px 4px 4px  
4px #E7859D; -webkit-box-shadow:4px 4px  
4px 4px #E7859D; box-shadow:4px 4px 4px  
4px #E7859D }
```

Background

The CSS property to change the background color of an element to Decimal 15173021 is called "background". The background property can be set on classes, ids or directly on the HTML element.

```
.background, #background, body{  
background:#E7859D }
```

If only the background color should be changed can be used:

```
.background{ background-color:#E7859D }
```

This example shows the color as background, it is applied via the CSS property "background".

To optimize and compress your CSS code, you can use our [online CSS compressor and optimizer](#) based on csstidy. If you want to create a linear or radial gradient as background or border, check our [CSS Gradient Generator](#).

Hey! You found this booklet interesting? Support Converting Colors with the new Membership Option!

The pro membership hides all ads, plus gives you double the colors in the color bucket, and more awesome pro features!

[Learn more, Memberships starting at \\$2.50/m!](#)

**Follow me
on Twitter!**

@ConvertingColor