

Converting Colors

Decimal(15189428)

Have a look what the booklet for
Decimal(15189428) contains.

Decimal(15189428)	3
<i>Conversions</i>	4
<i>Details</i>	6
<i>Harmonies</i>	11
<i>Previews</i>	23
<i>Color Blindness Simulation</i>	26
<i>CSS Examples</i>	29

Color

Decimal(15189428)

Conversions

Conversions Part 1

Format	Color
Hex	E7C5B4
RGB	231, 197, 180
RGB Percent	91%, 77%, 71%
CMY	0.0941, 0.2275, 0.2941
CMYK	0.00, 0.15, 0.22, 0.09
HSL	20°, 52%, 81%
HSV	20°, 22%, 91%
XYZ	61.1595, 60.2167, 51.5796
YIQ	205.2280, 25.7210, 1.9210

Conversions

Conversions Part 2

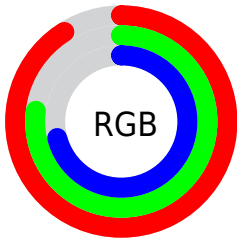
Format	Color
RYP	231, 206, 180
Decimal	15189428
CIELab	81.96, 9.44, 12.98
CIElCh	82, 16.051, 53.975
Yxy	60.2167, 0.3536, 0.3482
Android (android.graphics.Color)	4293379508 (0xFFE7C5B4)
YUV	205.2280, -12.4374, 22.6020
Hunter-Lab	77.5994, 4.8846, 14.9101

Details

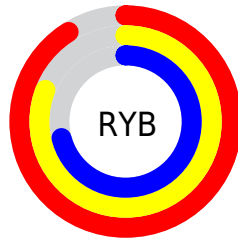
The Decimal color **15189428** is a light color, and the websafe version is hex **FFCCCC**. A complement of this color would be **11851495**, and the grayscale version is **13487565**.

A 20% lighter version of the original color is **16776940**, and **11505535** is the 20% darker color. If you saturate the color by 10%, you get **15185565**, and if you desaturate by 10%, it is **15193291**.

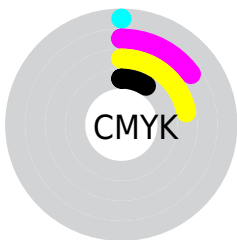
Distribution



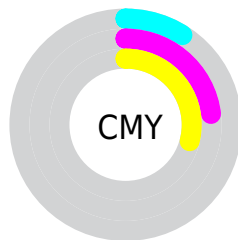
- Red (91%)
- Green (77%)
- Blue (71%)



- Red (91%)
- Yellow (81%)
- Blue (71%)



- Cyan (0%)
- Magenta (15%)
- Yellow (22%)
- Black (9%)





- Cyan (9%)
- Magenta (23%)
- Yellow (29%)

Brightness & Saturation Gradients

These gradients show how the Decimal color 15189428 changes by changing the brightness by 10 percent. The first figure shows a shift by +10% for each color and the second figure -10%.

Similar to the brightness gradients but the following saturation gradients show a change of the Decimal color 15189428 by changing the saturation by 10% instead.

 15189428

 15189428

16777215

 13347481

 16776940

 11505535

 9729638

 8019278

 6309175

 4730658

 3152396

 1769472

 0

15189428

15189428

15185565

15193291

15181446

15197410

15177583

15201273

15173464

15204351

15169601

15165737

15161618

15158528

Harmonies

Analogous

The Analogous color harmony consists of three colors that are next to each other on the color wheel.



15516352



15189428



14404270

Triad

The Triadic color harmony groups three colors that are evenly spaced from another and form a triangle on the color wheel.



15189428



11261384



13355495

Complementary

The Complementary color scheme is a pair of colors which are on the opposite of each other on the color wheel.



15189428



11851495

Split Complementary

Split-complementary colors differ from the complementary color scheme. The scheme consists of three colors, the original color and two neighbors of the complement color.



12111593



15189428



10867927

Square

The Square scheme is like the rectangle color scheme, but the four colors are evenly spaced on the color wheel.



15189428



12243642



11129572



14533854

Rectangle

The Rectangle color scheme consists of four colors that form a rectangle on the color wheel.



15189428



13684143



11129572



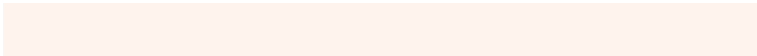
12897257

Sweetspot

The Sweet Spot groups the original color and five complimentary colors.



15189428



16774125



15185110



8419701



0



8421504

Same Dimension

The Same Dimension uses a secret algorithm to generate beautiful new colors.



15189428



16765885



15196084



7564135



11746048



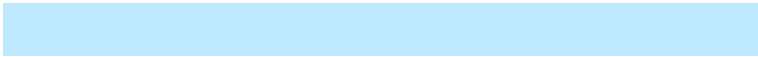
3346688

Inverse Universe

The Inverse Universe completely reimagines the original color for something new.



11851495



12446207



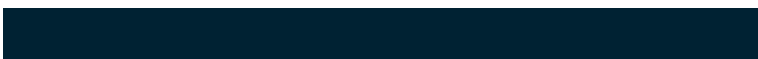
11845095



6778739



30643



8755

Previews

White Background



This preview shows how the Decimal color 15189428 looks on a white background.

Color Contrast Check

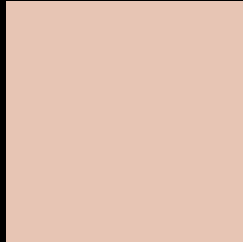
Large Text (above 18pt) WCAG AA × Fail

Any Text WCAG AA × Fail

Large Text (above 18pt) WCAG AAA × Fail

Any Text WCAG AAA × Fail

Black Background



This preview shows how the Decimal color 15189428 looks on a black background.

Color Contrast Check

Large Text (above 18pt) WCAG AA ✓ Pass

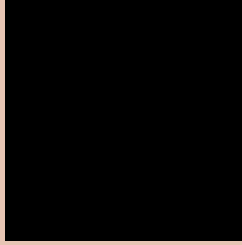
Any Text WCAG AA ✓ Pass

Large Text (above 18pt) WCAG AAA ✓ Pass

Any Text WCAG AAA ✓ Pass

If you want to check with other color combinations, try the [Color Contrast Checker](#).

Decimal 15189428 Background



This preview shows how black text looks on a background with the Decimal color 15189428.




This preview shows how white text looks on a background with the Decimal color 15189428.

Color Blindness Simulation

Color vision deficiency is a very complex topic, and I could not describe the different causes any better than Wikipedia does, so if you want to learn more, you should check out their [article about color blindness](#).

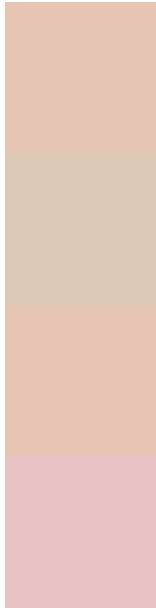
Dichromacy





Tritanopia
15385040

Trichromacy



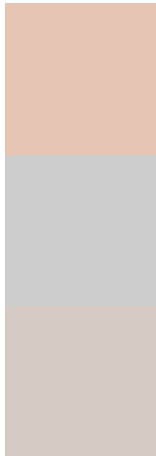
Original Color
15189428

Protanomaly
14404022

Deuteranomaly
15254708

Tritanomaly
15319750

Monochromacy



Original Color
15189428

Achromatopsia
13487565

Achromatomaly
14076612

CSS Examples

Text

The CSS property to change the color of the text to Decimal 15189428 is called "color". The color property can be set on classes, ids or directly on the HTML element.

This example shows how text in the color #E7C5B4 looks like.

```
.text, #text, p{  
    color:#E7C5B4  
}
```

If you want to add a text shadow in that color use the text-shadow property, you can generate a text shadow directly with our [CSS Text Shadow Generator](#).

Here you see how black text with a 4 pixel #E7C5B4 colored shadow looks like.

```
.shadow{ text-shadow: 4px 4px 2px #E7C5B4
}
```

Border

The CSS property to change the border of an element to Decimal 15189428 is called "border". The border property can be set on classes, ids or directly on the HTML element.

This example shows the color as border, it can be applied via the CSS property "border" or "border-color".

```
.border, #border, table{ border:4px solid
#E7C5B4 }
```

If only the border color should be changed use the property `border-color`.

```
.border{ border-color:#E7C5B4 }
```

If you want to add a box shadow in that color use:

Here you see how a box with a 4 pixel #E7C5B4 colored shadow looks like.

```
.boxshadow{ -moz-box-shadow:4px 4px 4px  
4px #E7C5B4; -webkit-box-shadow:4px 4px  
4px 4px #E7C5B4; box-shadow:4px 4px 4px  
4px #E7C5B4 }
```

Background

The CSS property to change the background color of an element to Decimal 15189428 is called "background". The background property can be set on classes, ids or directly on the HTML element.

```
.background, #background, body{  
background:#E7C5B4 }
```

If only the background color should be changed can be used:

```
.background{ background-color:#E7C5B4 }
```

This example shows the color as background, it is applied via the CSS property "background".

To optimize and compress your CSS code, you can use our [online CSS compressor and optimizer](#) based on csstidy. If you want to create a linear or radial gradient as background or border, check our [CSS Gradient Generator](#).

Hey! You found this booklet interesting? Support Converting Colors with the new Membership Option!

The pro membership hides all ads, plus gives you double the colors in the color bucket, and more awesome pro features!

[Learn more, Memberships starting at \\$2.50/m!](#)

**Follow me
on Twitter!**

@ConvertingColor