

# Converting Colors

Decimal(15190991)

Have a look what the booklet for  
Decimal(15190991) contains.

<b>Decimal(15190991)</b> .....	3
<i><b>Conversions</b></i> .....	4
<i><b>Details</b></i> .....	6
<i><b>Harmonies</b></i> .....	11
<i><b>Previews</b></i> .....	23
<i><b>Color Blindness Simulation</b></i> .....	26
<i><b>CSS Examples</b></i> .....	29

# **Color**

**Decimal(15190991)**

# Conversions

## Conversions Part 1

Format	Color
Hex	E7CBCF
RGB	231, 203, 207
RGB Percent	91%, 80%, 81%
CMY	0.0941, 0.2039, 0.1882
CMYK	0.00, 0.12, 0.10, 0.09
HSL	351°, 37%, 85%
HSV	351°, 12%, 91%
XYZ	65.5734, 64.2058, 67.9683
YIQ	211.8280, 15.4040, 7.1800

# Conversions

## Conversions Part 2

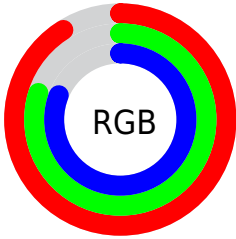
<b>Format</b>	<b>Color</b>
<b>R<sub>YB</sub></b>	231, 203, 207
Decimal	15190991
CIE <sub>Lab</sub>	84.07, 10.46, 1.61
CIE <sub>LCh</sub>	84, 10.583, 8.760
Yxy	64.2058, 0.3316, 0.3247
Android (android.graphics.Color)	4293381071 (0xFFE7CBCF)
YUV	211.8280, -2.3802, 16.8138
Hunter-Lab	80.1285, 5.8511, 5.7977

# Details

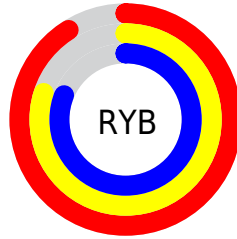
The Decimal color **15190991** is a light color, and the websafe version is hex **FFCCCC**. A complement of this color would be **13363171**, and the grayscale version is **13948116**.

A 20% lighter version of the original color is **16777215**, and **11507097** is the 20% darker color. If you saturate the color by 10%, you get **15185083**, and if you desaturate by 10%, it is **15196899**.

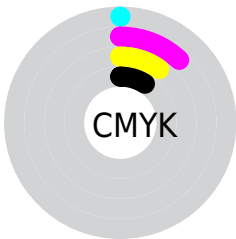
# Distribution



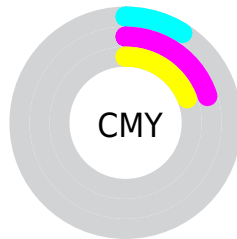
- Red (91%)
- Green (80%)
- Blue (81%)



- Red (91%)
- Yellow (80%)
- Blue (81%)



- Cyan (0%)
- Magenta (12%)
- Yellow (10%)
- Black (9%)



- Cyan (9%)
- Magenta (20%)
- Yellow (19%)

# Brightness & Saturation Gradients

These gradients show how the Decimal color 15190991 changes by changing the brightness by 10 percent. The first figure shows a shift by +10% for each color and the second figure -10%.

Similar to the brightness gradients but the following saturation gradients show a change of the Decimal color 15190991 by changing the saturation by 10% instead.



15190991

15190991

16777215

13349043

11507097

9730943

8020582

6376014

4797495


3284514

2033419

0

 15190991


 15190991

 15185083

 15196899


 15179175


 15202807

 15173268

 15204351

 15167360

 15161452

 15155288

 15149380

 15143473

 15138849

# Harmonies

## Analogous

The Analogous color harmony consists of three colors that are next to each other on the color wheel.



14863577



15190991



15191238

# Triad

The Triadic color harmony groups three colors that are evenly spaced from another and form a triangle on the color wheel.



15190991



13358530



12637668

# Complementary

The Complementary color scheme is a pair of colors which are on the opposite of each other on the color wheel.



15190991



13363171

# Split Complementary

Split-complementary colors differ from the complementary color scheme. The scheme consists of three colors, the original color and two neighbors of the complement color.



12244958



15190991



12703690

# Square

The Square scheme is like the rectangle color scheme, but the four colors are evenly spaced on the color wheel.



15190991



14144190



12245204



13357797

# Rectangle

The Rectangle color scheme consists of four colors that form a rectangle on the color wheel.



15190991



14929601



12245204



12441314



# Sweetspot

The Sweet Spot groups the original color and five complimentary colors.



15190991



16774646



14928871



8419706



0



8421504



# Same Dimension

The Same Dimension uses a secret algorithm to generate beautiful new colors.



15190991



16767454



15193547



7563113



11730970



3342343



# Inverse Universe

The Inverse Universe completely reimagines the original color for something new.



15190991



16767454



13360615



7563113



11730970

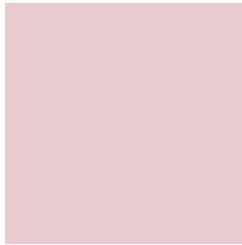


3342343



# Previews

## White Background



This preview shows how the Decimal color 15190991 looks on a white background.

## Color Contrast Check

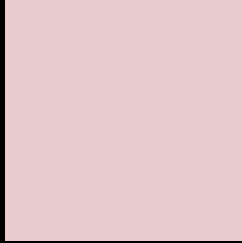
Large Text (above 18pt) WCAG AA × Fail

Any Text WCAG AA × Fail

Large Text (above 18pt) WCAG AAA × Fail

Any Text WCAG AAA × Fail

# Black Background



This preview shows how the Decimal color 15190991 looks on a black background.

## Color Contrast Check

Large Text (above 18pt) WCAG AA ✓ Pass

Any Text WCAG AA ✓ Pass

Large Text (above 18pt) WCAG AAA ✓ Pass

Any Text WCAG AAA ✓ Pass

If you want to check with other color combinations, try the [Color Contrast Checker](#).



## Decimal 15190991 Background



This preview shows how black text looks on a background with the Decimal color 15190991.



This preview shows how white text looks on a background with the Decimal color 15190991.

# Color Blindness Simulation

Color vision deficiency is a very complex topic, and I could not describe the different causes any better than Wikipedia does, so if you want to learn more, you should check out their [article about color blindness](#).

## Dichromacy





**Tritanopia**  
15256025

# Trichromacy



**Original Color**  
15190991

**Protanomaly**  
14471121

**Deuteranomaly**  
15190991

**Tritanomaly**  
15256277

# Monochromacy



**Original Color**  
15190991

**Achromatopsia**  
13948116

**Achromatomaly**  
14406098

# CSS Examples

## Text

The CSS property to change the color of the text to Decimal 15190991 is called "color". The color property can be set on classes, ids or directly on the HTML element.

This example shows how text in the color #E7CBCF looks like.

```
.text, #text, p{  
    color:#E7CBCF  
}
```

If you want to add a text shadow in that color use the text-shadow property, you can generate a text shadow directly with our [CSS Text Shadow Generator](#).

Here you see how black text with a 4 pixel #E7CBCF colored shadow looks like.

```
.shadow{ text-shadow: 4px 4px 2px #E7CBCF
}
```

## Border

The CSS property to change the border of an element to Decimal 15190991 is called "border". The border property can be set on classes, ids or directly on the HTML element.

This example shows the color as border, it can be applied via the CSS property "border" or "border-color".

```
.border, #border, table{ border:4px solid
#E7CBCF }
```

If only the border color should be changed use the property `border-color`.

```
.border{ border-color:#E7CBCF }
```

If you want to add a box shadow in that color use:

Here you see how a box with a 4 pixel #E7CBCF colored shadow looks like.

```
.boxshadow{ -moz-box-shadow:4px 4px 4px  
4px #E7CBCF; -webkit-box-shadow:4px 4px  
4px 4px #E7CBCF; box-shadow:4px 4px 4px  
4px #E7CBCF }
```

# Background

The CSS property to change the background color of an element to Decimal 15190991 is called "background". The background property can be set on classes, ids or directly on the HTML element.

```
.background, #background, body{  
background:#E7CBCF }
```

If only the background color should be changed can be used:

```
.background{ background-color:#E7CBCF }
```

This example shows the color as background, it is applied via the CSS property "background".

To optimize and compress your CSS code, you can use our [online CSS compressor and optimizer](#) based on csstidy. If you want to create a linear or radial gradient as background or border, check our [CSS Gradient Generator](#).



Hey! You found this booklet interesting? Support Converting Colors with the new Membership Option!

The pro membership hides all ads, plus gives you double the colors in the color bucket, and more awesome pro features!

**[Learn more, Memberships starting at \\$2.50/m!](#)**

**Follow me  
on Twitter!**

@ConvertingColor