

# Converting Colors

Decimal(15191498)

Have a look what the booklet for  
Decimal(15191498) contains.

<b>Decimal(15191498)</b> .....	3
<i><b>Conversions</b></i> .....	4
<i><b>Details</b></i> .....	6
<i><b>Harmonies</b></i> .....	11
<i><b>Previews</b></i> .....	23
<i><b>Color Blindness Simulation</b></i> .....	26
<i><b>CSS Examples</b></i> .....	29

# **Color**

**Decimal(15191498)**

# Conversions

## Conversions Part 1

Format	Color
Hex	E7CDCA
RGB	231, 205, 202
RGB Percent	91%, 80%, 79%
CMY	0.0941, 0.1961, 0.2078
CMYK	0.00, 0.11, 0.13, 0.09
HSL	6°, 38%, 85%
HSV	6°, 13%, 91%
XYZ	65.4470, 64.9158, 64.9577
YIQ	212.4320, 16.4590, 4.5790

# Conversions

## Conversions Part 2

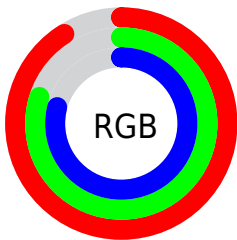
Format	Color
R <sub>Y</sub> B	231, 205, 202
Decimal	15191498
CIE Lab	84.44, 8.59, 4.81
CIE LCh	84, 9.845, 29.231
Yxy	64.9158, 0.3351, 0.3324
Android (android.graphics.Color)	4293381578 (0xFFE7CDCA)
YUV	212.4320, -5.1430, 16.2841
Hunter-Lab	80.5704, 3.9967, 8.5983

# Details

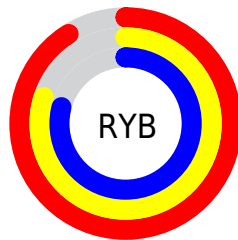
The Decimal color **15191498** is a light color, and the websafe version is hex **FFCCCC**. A complement of this color would be **13296871**, and the grayscale version is **13948116**.

A 20% lighter version of the original color is **16777215**, and **11507604** is the 20% darker color. If you saturate the color by 10%, you get **15186099**, and if you desaturate by 10%, it is **15196897**.

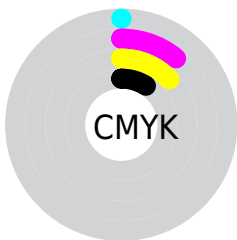
# Distribution



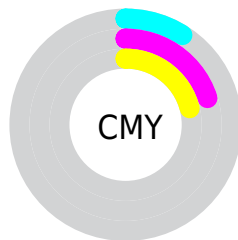
- Red (91%)
- Green (80%)
- Blue (79%)



- Red (91%)
- Yellow (80%)
- Blue (79%)



- Cyan (0%)
- Magenta (11%)
- Yellow (13%)
- Black (9%)



- Cyan (9%)
- Magenta (20%)
- Yellow (21%)

# Brightness & Saturation Gradients

These gradients show how the Decimal color 15191498 changes by changing the brightness by 10 percent. The first figure shows a shift by +10% for each color and the second figure -10%.

Similar to the brightness gradients but the following saturation gradients show a change of the Decimal color 15191498 by changing the saturation by 10% instead.



15191498

15191498

16777215

13349551

11507604

9731450

8021089

6376522

4797747

3285022

2033925

0

 15191498


 15191498

 15186099


 15196897


 15180956


 15202040


 15175557

 15204351

 15170158

 15164758

 15159615

 15154216

 15148817

 15144960

# Harmonies

## Analogous

The Analogous color harmony consists of three colors that are next to each other on the color wheel.



15125971



15191498



14929859

# Triad

The Triadic color harmony groups three colors that are evenly spaced from another and form a triangle on the color wheel.



15191498



13031369



13227237

# Complementary

The Complementary color scheme is a pair of colors which are on the opposite of each other on the color wheel.



15191498



13296871

# Split Complementary

Split-complementary colors differ from the complementary color scheme. The scheme consists of three colors, the original color and two neighbors of the complement color.



12637922



15191498



12507346

# Square

The Square scheme is like the rectangle color scheme, but the four colors are evenly spaced on the color wheel.



15191498



13686210



12376283



13947107

# Rectangle

The Rectangle color scheme consists of four colors that form a rectangle on the color wheel.



15191498



14602689



12376283



12965349

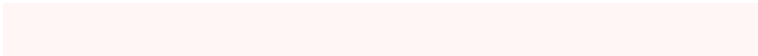


# Sweetspot

The Sweet Spot groups the original color and five complimentary colors.



15191498



16774901



15190756



8419961



0



8421504

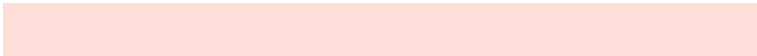


# Same Dimension

The Same Dimension uses a secret algorithm to generate beautiful new colors.



15191498



16768473



15195082



7563367



11735552



3343616

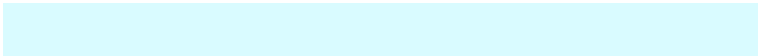


# Inverse Universe

The Inverse Universe completely reimagines the original color for something new.



13296871



14285823



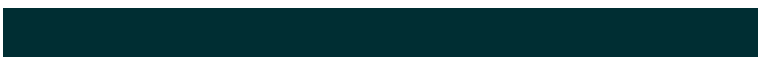
13293287



6779507



41139

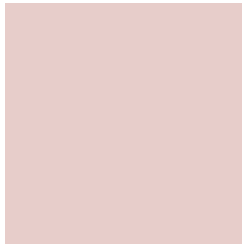


11827



# Previews

## White Background



This preview shows how the Decimal color 15191498 looks on a white background.

## Color Contrast Check

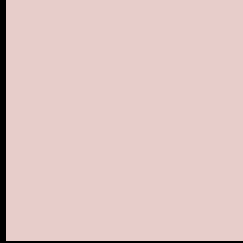
Large Text (above 18pt) WCAG AA × Fail

Any Text WCAG AA × Fail

Large Text (above 18pt) WCAG AAA × Fail

Any Text WCAG AAA × Fail

# Black Background



This preview shows how the Decimal color 15191498 looks on a black background.

## Color Contrast Check

Large Text (above 18pt) WCAG AA ✓ Pass

Any Text WCAG AA ✓ Pass

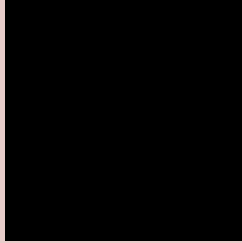
Large Text (above 18pt) WCAG AAA ✓ Pass

Any Text WCAG AAA ✓ Pass

If you want to check with other color combinations, try the [Color Contrast Checker](#).



## Decimal 15191498 Background



This preview shows how black text looks on a background with the Decimal color 15191498.




This preview shows how white text looks on a background with the Decimal color 15191498.

# Color Blindness Simulation

Color vision deficiency is a very complex topic, and I could not describe the different causes any better than Wikipedia does, so if you want to learn more, you should check out their [article about color blindness](#).

## Dichromacy





**Tritanopia**  
15321818

# Trichromacy



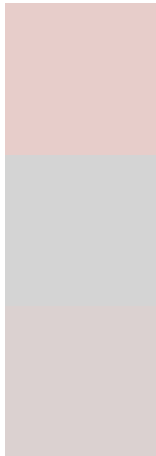
**Original Color**  
15191498

**Protanomaly**  
14536908

**Deuteranomaly**  
15322314

**Tritanomaly**  
15256532

# Monochromacy



**Original Color**  
15191498

**Achromatopsia**  
13948116

**Achromatomaly**  
14406096

# CSS Examples

## Text

The CSS property to change the color of the text to Decimal 15191498 is called "color". The color property can be set on classes, ids or directly on the HTML element.

This example shows how text in the color #E7CDCA looks like.

```
.text, #text, p{  
  color:#E7CDCA  
}
```

If you want to add a text shadow in that color use the text-shadow property, you can generate a text shadow directly with our [CSS Text Shadow Generator](#).

Here you see how black text with a 4 pixel #E7CDCA colored shadow looks like.

```
.shadow{ text-shadow: 4px 4px 2px #E7CDCA
}
```

## Border

The CSS property to change the border of an element to Decimal 15191498 is called "border". The border property can be set on classes, ids or directly on the HTML element.

This example shows the color as border, it can be applied via the CSS property "border" or "border-color".

```
.border, #border, table{ border:4px solid
#E7CDCA }
```

If only the border color should be changed use the property `border-color`.

```
.border{ border-color:#E7CDCA }
```

If you want to add a box shadow in that color use:

Here you see how a box with a 4 pixel #E7CDCA colored shadow looks like.

```
.boxshadow{ -moz-box-shadow:4px 4px 4px  
4px #E7CDCA; -webkit-box-shadow:4px 4px  
4px 4px #E7CDCA; box-shadow:4px 4px 4px  
4px #E7CDCA }
```

# Background

The CSS property to change the background color of an element to Decimal 15191498 is called "background". The background property can be set on classes, ids or directly on the HTML element.

```
.background, #background, body{  
background:#E7CDCA }
```

If only the background color should be changed can be used:

```
.background{ background-color:#E7CDCA }
```

This example shows the color as background, it is applied via the CSS property "background".

To optimize and compress your CSS code, you can use our [online CSS compressor and optimizer](#) based on csstidy. If you want to create a linear or radial gradient as background or border, check our [CSS Gradient Generator](#).



Hey! You found this booklet interesting? Support Converting Colors with the new Membership Option!

The pro membership hides all ads, plus gives you double the colors in the color bucket, and more awesome pro features!

**[Learn more, Memberships starting at \\$2.50/m!](#)**

**Follow me  
on Twitter!**

@ConvertingColor