

Converting Colors

Decimal(15212120)

Have a look what the booklet for
Decimal(15212120) contains.

Decimal(15212120)	3
<i>Conversions</i>	4
<i>Details</i>	6
<i>Harmonies</i>	11
<i>Previews</i>	23
<i>Color Blindness Simulation</i>	26
<i>CSS Examples</i>	29

Color

Decimal(15212120)

Conversions

Conversions Part 1

Format	Color
Hex	E81E58
RGB	232, 30, 88
RGB Percent	91%, 12%, 35%
CMY	0.0902, 0.8824, 0.6549
CMYK	0.00, 0.87, 0.62, 0.09
HSL	343°, 81%, 51%
HSV	343°, 87%, 91%
XYZ	35.5044, 18.7889, 10.9879
YIQ	97.0100, 101.7740, 60.8620

Conversions

Conversions Part 2

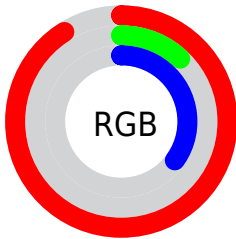
Format	Color
R_{YB}	232, 30, 88
Decimal	15212120
CIE Lab	50.44, 73.72, 21.44
CIE LCh	50, 76.773, 16.214
Yxy	18.7889, 0.5439, 0.2878
Android (android.graphics.Color)	4293402200 (0xFFE81E58)
YUV	97.0100, -4.4419, 118.3862
Hunter-Lab	43.3462, 70.3517, 15.3129

Details

The Decimal color **15212120** is a dark color, and the websafe version is hex **FF3366**. The color can be described as dark washed red. A complement of this color would be **2025646**, and the grayscale version is **6381921**.

A 20% lighter version of the original color is **16737929**, and **11010091** is the 20% darker color. If you saturate the color by 10%, you get **15206215**, and if you desaturate by 10%, it is **15218025**.

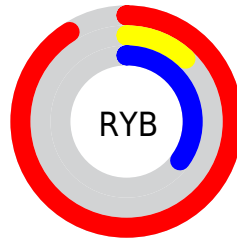
Distribution



Red (91%)

Green (12%)

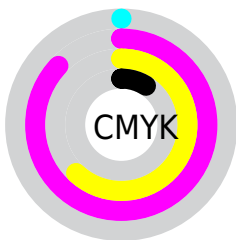
Blue (35%)



Red (91%)

Yellow (12%)

Blue (35%)

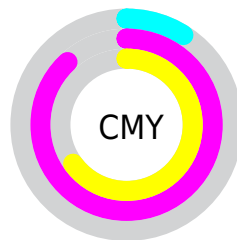


Cyan (0%)

Magenta (87%)

Yellow (62%)

Black (9%)



Cyan (9%)

Magenta (88%)

Yellow (65%)

Brightness & Saturation Gradients

These gradients show how the Decimal color 15212120 changes by changing the brightness by 10 percent. The first figure shows a shift by +10% for each color and the second figure -10%.

Similar to the brightness gradients but the following saturation gradients show a change of the Decimal color 15212120 by changing the saturation by 10% instead.

 15212120

 15212120

16777215

 13107265

 16737929

 11010091

 16745636

 8978456

 16753343

 6946817

 16761050

 5046276

 16768759

 2949121

 16776447

 0

 15212120

 15212120

 15206215

 15218025

■ 15204419

■ 15223929

■ 15230090

■ 15235994

■ 15241899

■ 15247803

■ 15253708

■ 15259868

■ 15265773

Harmonies

Analogous

The Analogous color harmony consists of three colors that are next to each other on the color wheel.



14362265



15212120



13912086

Triad

The Triadic color harmony groups three colors that are evenly spaced from another and form a triangle on the color wheel.



15212120



35841



35320

Complementary

The Complementary color scheme is a pair of colors which are on the opposite of each other on the color wheel.



15212120



2025646

Split Complementary

Split-complementary colors differ from the complementary color scheme. The scheme consists of three colors, the original color and two neighbors of the complement color.



37590



15212120



37462

Square

The Square scheme is like the rectangle color scheme, but the four colors are evenly spaced on the color wheel.



15212120



7438336



38043



29943

Rectangle

The Rectangle color scheme consists of four colors that form a rectangle on the color wheel.



15212120



12214272



38043



36337

Sweetspot

The Sweet Spot groups the original color and five complimentary colors.



15212120



16760272



11214568



8411235



0



8421504

Same Dimension

The Same Dimension uses a secret algorithm to generate beautiful new colors.



15212120



16711753



15222302



7563115



11730995



3342351

Inverse Universe

The Inverse Universe completely reimagines the original color for something new.



15212120



16711753



2015464



7563115



11730995



3342351

Previews

White Background



This preview shows how the Decimal color 15212120 looks on a white background.

Color Contrast Check

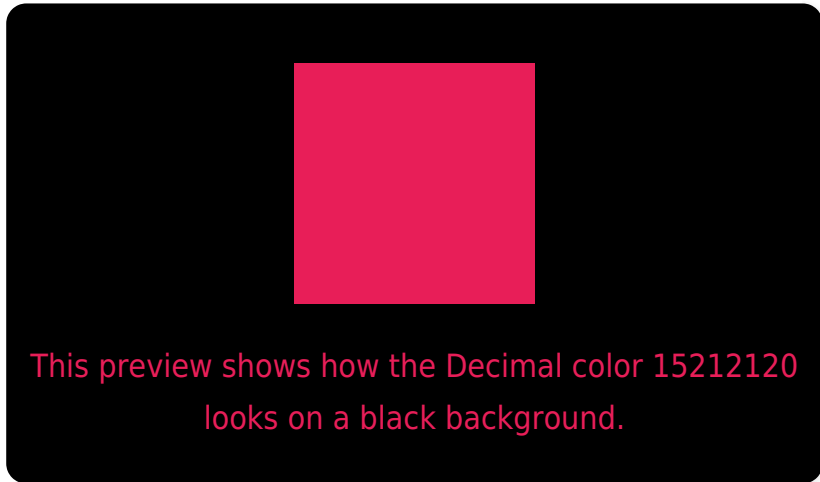
Large Text (above 18pt) WCAG AA ✓ Pass

Any Text WCAG AA × Fail

Large Text (above 18pt) WCAG AAA × Fail

Any Text WCAG AAA × Fail

Black Background



Color Contrast Check

Large Text (above 18pt) WCAG AA ✓ Pass

Any Text WCAG AA ✓ Pass

Large Text (above 18pt) WCAG AAA ✓ Pass

Any Text WCAG AAA × Fail

If you want to check with other color combinations, try the [Color Contrast Checker](#).

Decimal 15212120 Background



This preview shows how black text looks on a background with the Decimal color 15212120.



This preview shows how white text looks on a background with the Decimal color 15212120.

Color Blindness Simulation

Color vision deficiency is a very complex topic, and I could not describe the different causes any better than Wikipedia does, so if you want to learn more, you should check out their [article about color blindness](#).

Dichromacy



Original Color
15212120

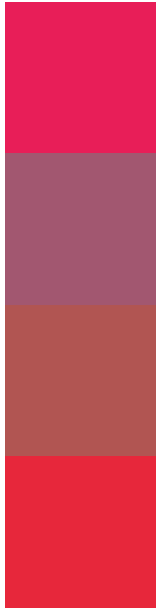
Protanopia
8026238

Deuteranopia
9532494



Tritanopia
15084587

Trichromacy



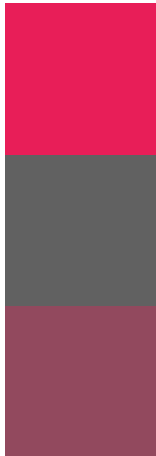
Original Color
15212120

Protanomaly
10639216

Deuteranomaly
11621714

Tritanomaly
15148859

Monochromacy



Original Color
15212120

Achromatopsia
6381921

Achromatomaly
9587038

CSS Examples

Text

The CSS property to change the color of the text to Decimal 15212120 is called "color". The color property can be set on classes, ids or directly on the HTML element.

This example shows how text in the color #E81E58 looks like.

```
.text, #text, p{  
  color:#E81E58  
}
```

If you want to add a text shadow in that color use the text-shadow property, you can generate a text shadow directly with our [CSS Text Shadow Generator](#).

Here you see how black text with a 4 pixel #E81E58 colored shadow looks like.

```
.shadow{ text-shadow: 4px 4px 2px #E81E58
}
```

Border

The CSS property to change the border of an element to Decimal 15212120 is called "border". The border property can be set on classes, ids or directly on the HTML element.

This example shows the color as border, it can be applied via the CSS property "border" or "border-color".

```
.border, #border, table{ border:4px solid
#E81E58 }
```

If only the border color should be changed use the property `border-color`.

```
.border{ border-color:#E81E58 }
```

If you want to add a box shadow in that color use:

Here you see how a box with a 4 pixel #E81E58 colored shadow looks like.

```
.boxshadow{ -moz-box-shadow:4px 4px 4px  
4px #E81E58; -webkit-box-shadow:4px 4px  
4px 4px #E81E58; box-shadow:4px 4px 4px  
4px #E81E58 }
```

Background

The CSS property to change the background color of an element to Decimal 15212120 is called "background". The background property can be set on classes, ids or directly on the HTML element.

```
.background, #background, body{  
background:#E81E58 }
```

If only the background color should be changed can be used:

```
.background{ background-color:#E81E58 }
```

This example shows the color as background, it is applied via the CSS property "background".

To optimize and compress your CSS code, you can use our [online CSS compressor and optimizer](#) based on csstidy. If you want to create a linear or radial gradient as background or border, check our [CSS Gradient Generator](#).

Hey! You found this booklet interesting? Support Converting Colors with the new Membership Option!

The pro membership hides all ads, plus gives you double the colors in the color bucket, and more awesome pro features!

[Learn more, Memberships starting at \\$2.50/m!](#)

**Follow me
on Twitter!**

@ConvertingColor