

Converting Colors

Decimal(15218285)

Have a look what the booklet for
Decimal(15218285) contains.

| | |
|--|----|
| Decimal(15218285) | 3 |
| <i>Conversions</i> | 4 |
| <i>Details</i> | 6 |
| <i>Harmonies</i> | 11 |
| <i>Previews</i> | 23 |
| <i>Color Blindness Simulation</i> | 26 |
| <i>CSS Examples</i> | 29 |

Color

Decimal(15218285)

Conversions

Conversions Part 1

| Format | Color |
|---------------|----------------------------|
| Hex | E8366D |
| RGB | 232, 54, 109 |
| RGB Percent | 91%, 21%, 43% |
| CMY | 0.0902, 0.7882, 0.5725 |
| CMYK | 0.00, 0.77, 0.53, 0.09 |
| HSL | 341°, 79%, 56% |
| HSV | 341°, 77%, 91% |
| XYZ | 37.3582, 20.8983, 16.5328 |
| YIQ | 113.4920, 88.4330, 54.8410 |

Conversions

Conversions Part 2

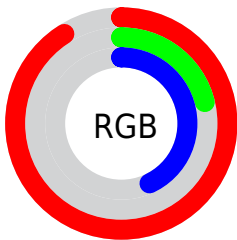
| Format | Color |
|-------------------------------------|--|
| RYB | 232, 54, 109 |
| Decimal | 15218285 |
| CIELab | 52.84, 69.54, 11.99 |
| CIElCh | 53, 70.567, 9.781 |
| Yxy | 20.8983, 0.4995, 0.2794 |
| Android (android.graphics.Color) | 4293408365 (0xFFE8366D) |
| YUV | 113.4920, -2.2146, 103.9315 |
| Hunter-Lab | 45.7146, 65.8704, 10.5579 |

Details

The Decimal color **15218285** is a dark color, and the websafe version is hex **CC3366**. The color can be described as dark washed rose. A complement of this color would be **3598513**, and the grayscale version is **7434609**.

A 20% lighter version of the original color is **16741536**, and **11141182** is the 20% darker color. If you saturate the color by 10%, you get **15212381**, and if you desaturate by 10%, it is **15224189**.

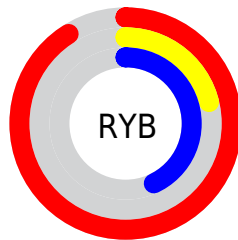
Distribution



Red (91%)

Green (21%)

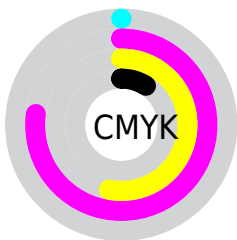
Blue (43%)



Red (91%)

Yellow (21%)

Blue (43%)

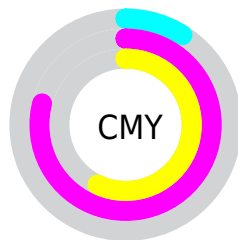


Cyan (0%)

Magenta (77%)

Yellow (53%)

Black (9%)



Cyan (9%)

Magenta (79%)

Yellow (57%)

Brightness & Saturation Gradients

These gradients show how the Decimal color 15218285 changes by changing the brightness by 10 percent. The first figure shows a shift by +10% for each color and the second figure -10%.

Similar to the brightness gradients but the following saturation gradients show a change of the Decimal color 15218285 by changing the saturation by 10% instead.


 15218285

 15218285

16777215

 13173077

 16741536

 11141182

 16749243

 9109545

 16756695

 7143445

 16764147

 5242883

 16771839

 3211266

 0

 15218285

 15218285

 15212381

 15224189

15206477

15230093

15204424

15236253

15242157

15248061

15253965

15259869

15266029

15269885

Harmonies

Analogous

The Analogous color harmony consists of three colors that are next to each other on the color wheel.



13910953



15218285



14437939

Triad

The Triadic color harmony groups three colors that are evenly spaced from another and form a triangle on the color wheel.



15218285



4296457



37104

Complementary

The Complementary color scheme is a pair of colors which are on the opposite of each other on the color wheel.



15218285



3598513

Split Complementary

Split-complementary colors differ from the complementary color scheme. The scheme consists of three colors, the original color and two neighbors of the complement color.



39115



15218285



38481

Square

The Square scheme is like the rectangle color scheme, but the four colors are evenly spaced on the color wheel.



15218285



8815104



39313



32759

Rectangle

The Rectangle color scheme consists of four colors that form a rectangle on the color wheel.



15218285



13066754



39313



37863

Sweetspot

The Sweet Spot groups the original color and five complimentary colors.



15218285



16762070



11548392



8412263



0



8421504

Same Dimension

The Same Dimension uses a secret algorithm to generate beautiful new colors.



15218285



16716893



15226678



7563115



11730999



3342352

Inverse Universe

The Inverse Universe completely reimagines the original color for something new.



15218285



16716893



3590120



7563115



11730999



3342352

Previews

White Background



This preview shows how the Decimal color 15218285 looks on a white background.

Color Contrast Check

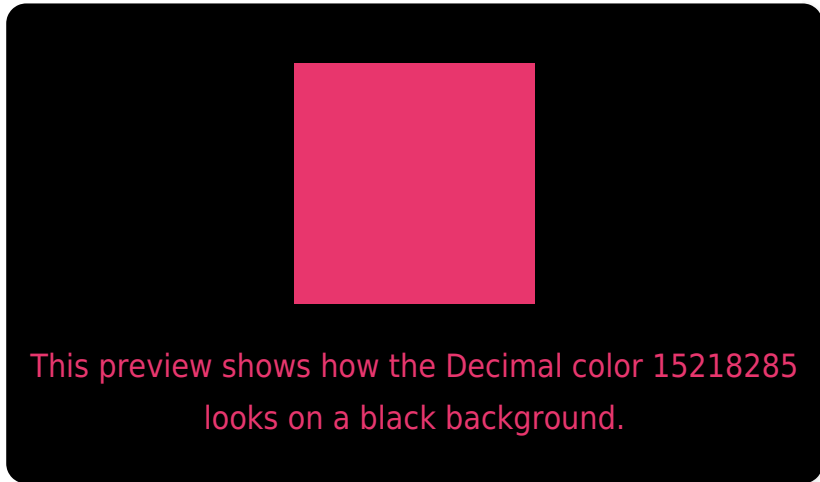
Large Text (above 18pt) WCAG AA ✓ Pass

Any Text WCAG AA × Fail

Large Text (above 18pt) WCAG AAA × Fail

Any Text WCAG AAA × Fail

Black Background



Color Contrast Check

Large Text (above 18pt) WCAG AA ✓ Pass

Any Text WCAG AA ✓ Pass

Large Text (above 18pt) WCAG AAA ✓ Pass

Any Text WCAG AAA × Fail

If you want to check with other color combinations, try the [Color Contrast Checker](#).

Decimal 15218285 Background



This preview shows how black text looks on a background with the Decimal color 15218285.

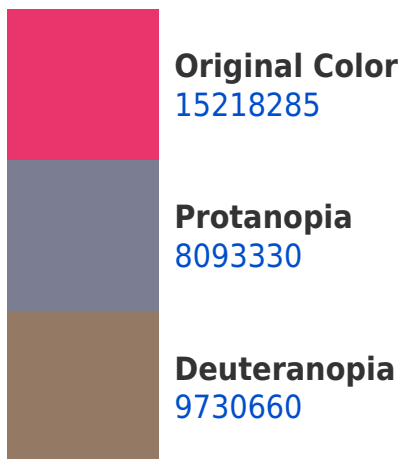


This preview shows how white text looks on a background with the Decimal color 15218285.

Color Blindness Simulation

Color vision deficiency is a very complex topic, and I could not describe the different causes any better than Wikipedia does, so if you want to learn more, you should check out their [article about color blindness](#).

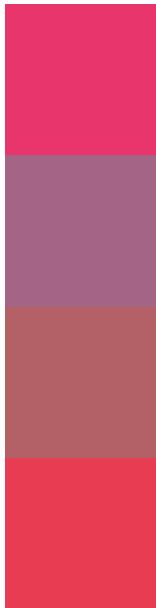
Dichromacy





Tritanopia
15089731

Trichromacy



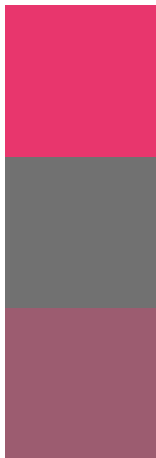
Original Color
15218285

Protanomaly
10708101

Deuteranomaly
11755879

Tritanomaly
15154258

Monochromacy



Original Color
15218285

Achromatopsia
7434609

Achromatomaly
10247280

CSS Examples

Text

The CSS property to change the color of the text to Decimal 15218285 is called "color". The color property can be set on classes, ids or directly on the HTML element.

This example shows how text in the color #E8366D looks like.

```
.text, #text, p{  
    color:#E8366D  
}
```

If you want to add a text shadow in that color use the text-shadow property, you can generate a text shadow directly with our [CSS Text Shadow Generator](#).

Here you see how black text with a 4 pixel #E8366D colored shadow looks like.

```
.shadow{ text-shadow: 4px 4px 2px #E8366D
}
```

Border

The CSS property to change the border of an element to Decimal 15218285 is called "border". The border property can be set on classes, ids or directly on the HTML element.

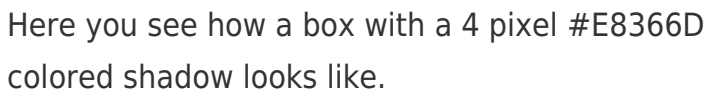
This example shows the color as border, it can be applied via the CSS property "border" or "border-color".

```
.border, #border, table{ border:4px solid
#E8366D }
```

If only the border color should be changed use the property `border-color`.

```
.border{ border-color:#E8366D }
```

If you want to add a box shadow in that color use:



Here you see how a box with a 4 pixel #E8366D colored shadow looks like.

```
.boxshadow{ -moz-box-shadow:4px 4px 4px  
4px #E8366D; -webkit-box-shadow:4px 4px  
4px 4px #E8366D; box-shadow:4px 4px 4px  
4px #E8366D }
```

Background

The CSS property to change the background color of an element to Decimal 15218285 is called "background". The background property can be set on classes, ids or directly on the HTML element.

```
.background, #background, body{  
background:#E8366D }
```

If only the background color should be changed can be used:

```
.background{ background-color:#E8366D }
```

This example shows the color as background, it is applied via the CSS property "background".

To optimize and compress your CSS code, you can use our [online CSS compressor and optimizer](#) based on csstidy. If you want to create a linear or radial gradient as background or border, check our [CSS Gradient Generator](#).

Hey! You found this booklet interesting? Support Converting Colors with the new Membership Option!

The pro membership hides all ads, plus gives you double the colors in the color bucket, and more awesome pro features!

[Learn more, Memberships starting at \\$2.50/m!](#)

**Follow me
on Twitter!**

@ConvertingColor