

Converting Colors

Decimal(15220091)

Have a look what the booklet for
Decimal(15220091) contains.

Decimal(15220091)	3
<i>Conversions</i>	4
<i>Details</i>	6
<i>Harmonies</i>	11
<i>Previews</i>	23
<i>Color Blindness Simulation</i>	26
<i>CSS Examples</i>	29

Color

Decimal(15220091)

Conversions

Conversions Part 1

Format	Color
Hex	E83D7B
RGB	232, 61, 123
RGB Percent	91%, 24%, 48%
CMY	0.0902, 0.7608, 0.5176
CMYK	0.00, 0.74, 0.47, 0.09
HSL	338°, 79%, 57%
HSV	338°, 74%, 91%
XYZ	38.5226, 21.9234, 20.9402
YIQ	119.1970, 82.0140, 55.5340

Conversions

Conversions Part 2

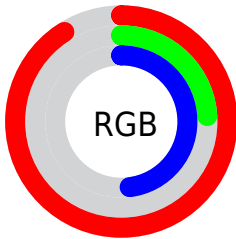
Format	Color
R_{YB}	232, 61, 123
Decimal	15220091
CIE _{Lab}	53.95, 68.53, 5.15
CIE _{LCh}	54, 68.727, 4.299
Yxy	21.9234, 0.4733, 0.2694
Android (android.graphics.Color)	4293410171 (0xFFE83D7B)
YUV	119.1970, 1.8749, 98.9282
Hunter-Lab	46.8224, 64.9198, 6.2597

Details

The Decimal color **15220091** is a dark color, and the websafe version is hex **CC3366**. The color can be described as middle washed rose. A complement of this color would be **4057258**, and the grayscale version is **7829367**.

A 20% lighter version of the original color is **16743087**, and **11206731** is the 20% darker color. If you saturate the color by 10%, you get **15214188**, and if you desaturate by 10%, it is **15225994**.

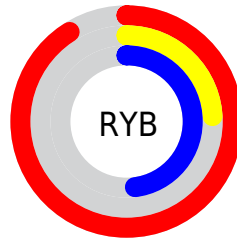
Distribution



Red (91%)

Green (24%)

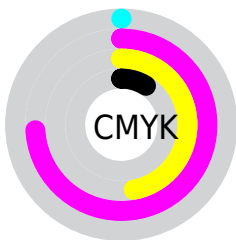
Blue (48%)



Red (91%)

Yellow (24%)

Blue (48%)

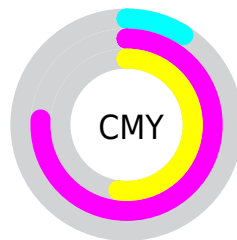


Cyan (0%)

Magenta (74%)

Yellow (47%)

Black (9%)



Cyan (9%)

Magenta (76%)

Yellow (52%)

Brightness & Saturation Gradients

These gradients show how the Decimal color 15220091 changes by changing the brightness by 10 percent. The first figure shows a shift by +10% for each color and the second figure -10%.

Similar to the brightness gradients but the following saturation gradients show a change of the Decimal color 15220091 by changing the saturation by 10% instead.

 15220091

 15220091

16777215

 13177954

 16743087

 11206731

 16750539

 9175092

 16757991

 7208992

 16765695

 5373958

 16773119

 3407874

 0

 15220091

 15220091

 15214188

 15225994

■ 15208285

■ 15231897

■ 15204436

■ 15238055

■ 15243958

■ 15249861

■ 15255764

■ 15261667

■ 15267825

■ 15269887

Harmonies

Analogous

The Analogous color harmony consists of three colors that are next to each other on the color wheel.



13520566



15220091



14831170

Triad

The Triadic color harmony groups three colors that are evenly spaced from another and form a triangle on the color wheel.



15220091



5672961



38124

Complementary

The Complementary color scheme is a pair of colors which are on the opposite of each other on the color wheel.



15220091



4057258

Split Complementary

Split-complementary colors differ from the complementary color scheme. The scheme consists of three colors, the original color and two neighbors of the complement color.



39875



15220091



38986

Square

The Square scheme is like the rectangle color scheme, but the four colors are evenly spaced on the color wheel.



15220091



9732352



39816



34552

Rectangle

The Rectangle color scheme consists of four colors that form a rectangle on the color wheel.



1522091



13590811



39816



38881

Sweetspot

The Sweet Spot groups the original color and five complimentary colors.



15220091



16762843



11091432



8412778



0



8421504

Same Dimension

The Same Dimension uses a secret algorithm to generate beautiful new colors.



15220091



16719728



15225917



7563115



11731009



3342354

Inverse Universe

The Inverse Universe completely reimagines the original color for something new.



15220091



16719728



4051432



7563115



11731009



3342354

Previews

White Background



This preview shows how the Decimal color 15220091 looks on a white background.

Color Contrast Check

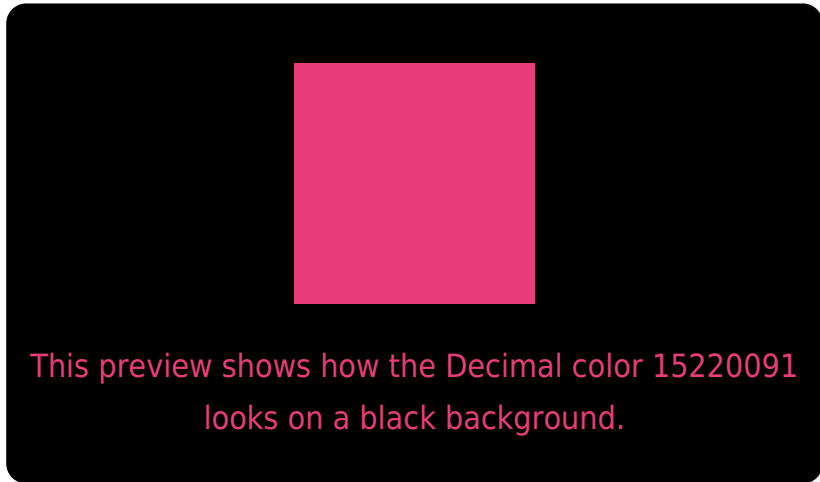
Large Text (above 18pt) WCAG AA ✓ Pass

Any Text WCAG AA × Fail

Large Text (above 18pt) WCAG AAA × Fail

Any Text WCAG AAA × Fail

Black Background



Color Contrast Check

Large Text (above 18pt) WCAG AA ✓ Pass

Any Text WCAG AA ✓ Pass

Large Text (above 18pt) WCAG AAA ✓ Pass

Any Text WCAG AAA × Fail

If you want to check with other color combinations, try the [Color Contrast Checker](#).

Decimal 15220091 Background



This preview shows how black text looks on a background with the Decimal color 15220091.



This preview shows how white text looks on a background with the Decimal color 15220091.

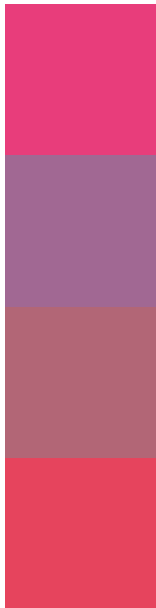
Color Blindness Simulation

Color vision deficiency is a very complex topic, and I could not describe the different causes any better than Wikipedia does, so if you want to learn more, you should check out their [article about color blindness](#).

Dichromacy



Trichromacy



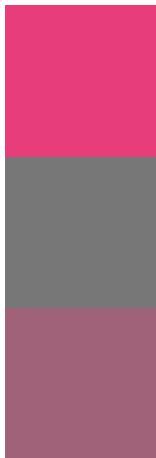
Original Color
15220091

Protanomaly
10578067

Deuteranomaly
11691638

Tritanomaly
15090781

Monochromacy



Original Color
15220091

Achromatopsia
7829367

Achromatomaly
10510968

CSS Examples

Text

The CSS property to change the color of the text to Decimal 15220091 is called "color". The color property can be set on classes, ids or directly on the HTML element.

This example shows how text in the color #E83D7B looks like.

```
.text, #text, p{  
    color:#E83D7B  
}
```

If you want to add a text shadow in that color use the text-shadow property, you can generate a text shadow directly with our [CSS Text Shadow Generator](#).

Here you see how black text with a 4 pixel #E83D7B colored shadow looks like.

```
.shadow{ text-shadow: 4px 4px 2px #E83D7B
}
```

Border

The CSS property to change the border of an element to Decimal 15220091 is called "border". The border property can be set on classes, ids or directly on the HTML element.

This example shows the color as border, it can be applied via the CSS property "border" or "border-color".

```
.border, #border, table{ border:4px solid
#E83D7B }
```

If only the border color should be changed use the property `border-color`.

```
.border{ border-color:#E83D7B }
```

If you want to add a box shadow in that color use:

Here you see how a box with a 4 pixel #E83D7B colored shadow looks like.

```
.boxshadow{ -moz-box-shadow:4px 4px 4px  
4px #E83D7B; -webkit-box-shadow:4px 4px  
4px 4px #E83D7B; box-shadow:4px 4px 4px  
4px #E83D7B }
```

Background

The CSS property to change the background color of an element to Decimal 15220091 is called "background". The background property can be set on classes, ids or directly on the HTML element.

```
.background, #background, body{  
background:#E83D7B }
```

If only the background color should be changed can be used:

```
.background{ background-color:#E83D7B }
```

This example shows the color as background, it is applied via the CSS property "background".

To optimize and compress your CSS code, you can use our [online CSS compressor and optimizer](#) based on csstidy. If you want to create a linear or radial gradient as background or border, check our [CSS Gradient Generator](#).

Hey! You found this booklet interesting? Support Converting Colors with the new Membership Option!

The pro membership hides all ads, plus gives you double the colors in the color bucket, and more awesome pro features!

[Learn more, Memberships starting at \\$2.50/m!](#)

**Follow me
on Twitter!**

@ConvertingColor