

# Converting Colors

Decimal(15222915)

Have a look what the booklet for  
Decimal(15222915) contains.

<b>Decimal(15222915)</b> .....	3
<i><b>Conversions</b></i> .....	4
<i><b>Details</b></i> .....	6
<i><b>Harmonies</b></i> .....	11
<i><b>Previews</b></i> .....	23
<i><b>Color Blindness Simulation</b></i> .....	26
<i><b>CSS Examples</b></i> .....	29

# Color

**Decimal(15222915)**

# Conversions

## Conversions Part 1

<b>Format</b>	<b>Color</b>
Hex	E84883
RGB	232, 72, 131
RGB Percent	91%, 28%, 51%
CMY	0.0902, 0.7176, 0.4863
CMYK	0.00, 0.69, 0.44, 0.09
HSL	338°, 78%, 60%
HSV	338°, 69%, 91%
XYZ	39.6928, 23.4292, 23.9030
YIQ	126.5660, 76.4210, 52.2690

# Conversions

## Conversions Part 2

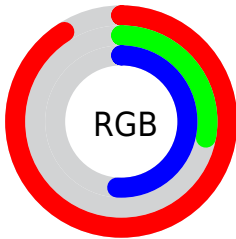
<b>Format</b>	<b>Color</b>
<b>R<sub>YB</sub></b>	232, 72, 131
Decimal	15222915
CIE <sub>Lab</sub>	55.51, 65.49, 2.65
CIE <sub>LCh</sub>	56, 65.546, 2.314
Yxy	23.4292, 0.4561, 0.2692
Android (android.graphics.Color)	4293412995 (0xFFE84883)
YUV	126.5660, 2.1860, 92.4656
Hunter-Lab	48.4037, 61.6698, 4.6037

# Details

The Decimal color **15222915** is a dark color, and the websafe version is hex **FF6699**. The color can be described as middle muted rose. A complement of this color would be **4778157**, and the grayscale version is **8289918**.

A 20% lighter version of the original color is **16745400**, and **11206738** is the 20% darker color. If you saturate the color by 10%, you get **15217012**, and if you desaturate by 10%, it is **15228818**.

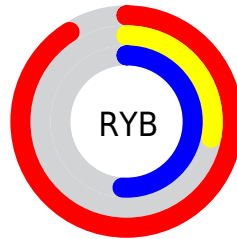
# Distribution



Red (91%)

Green (28%)

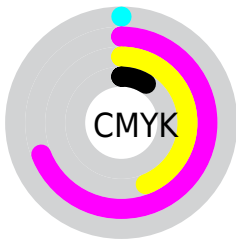
Blue (51%)



Red (91%)

Yellow (28%)

Blue (51%)

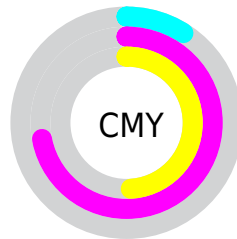


Cyan (0%)

Magenta (69%)

Yellow (44%)

Black (9%)



Cyan (9%)

Magenta (72%)

Yellow (49%)

# Brightness & Saturation Gradients

These gradients show how the Decimal color 15222915 changes by changing the brightness by 10 percent. The first figure shows a shift by +10% for each color and the second figure -10%.


Similar to the brightness gradients but the following saturation gradients show a change of the Decimal color 15222915 by changing the saturation by 10% instead.



 15222915

 15222915

16777215

 13182570

 16745400

 11206738

 16752595

 9240635

 16760048

 7340070

 16767743

 5439505

 16775167

 3604482

 524288

 0

 15222915

 15222915

 15217012

 15228818

 15211110

 15234720

 15204951

 15240879

 15204438

 15246782

 15252684

 15258587

 15264490

 15269880

 15269887

# Harmonies

## Analogous

The Analogous color harmony consists of three colors that are next to each other on the color wheel.



13392059



15222915



14963788

# Triad

The Triadic color harmony groups three colors that are evenly spaced from another and form a triangle on the color wheel.



15222915



6460178



39146

# Complementary

The Complementary color scheme is a pair of colors which are on the opposite of each other on the color wheel.



15222915



4778157

# Split Complementary

Split-complementary colors differ from the complementary color scheme. The scheme consists of three colors, the original color and two neighbors of the complement color.



40640



15222915



39757

# Square

The Square scheme is like the rectangle color scheme, but the four colors are evenly spaced on the color wheel.



15222915



10191872



40840



35575

# Rectangle

The Rectangle color scheme consists of four colors that form a rectangle on the color wheel.



15222915



13919529



40840



39902



# Sweetspot

The Sweet Spot groups the original color and five complimentary colors.



15222915



16763357



11225320



8413291



0



8421504



# Same Dimension

The Same Dimension uses a secret algorithm to generate beautiful new colors.



15222915



16722809



15227720



7563116



11731010



3342355



# Inverse Universe

The Inverse Universe completely reimagines the original color for something new.



15222915



16722809



4773352



7563116



11731010



3342355



# Previews

## White Background



This preview shows how the Decimal color 15222915 looks on a white background.

## Color Contrast Check

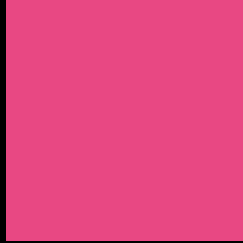
Large Text (above 18pt) WCAG AA ✓ Pass

Any Text WCAG AA × Fail

Large Text (above 18pt) WCAG AAA × Fail

Any Text WCAG AAA × Fail

# Black Background



This preview shows how the Decimal color 15222915 looks on a black background.

## Color Contrast Check

Large Text (above 18pt) WCAG AA ✓ Pass

Any Text WCAG AA ✓ Pass

Large Text (above 18pt) WCAG AAA ✓ Pass

Any Text WCAG AAA × Fail

If you want to check with other color combinations, try the [Color Contrast Checker](#).



## Decimal 15222915 Background



This preview shows how black text looks on a background with the Decimal color 15222915.



This preview shows how white text looks on a background with the Decimal color 15222915.

# Color Blindness Simulation

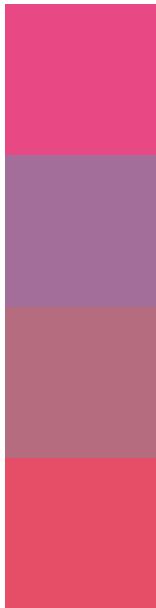
Color vision deficiency is a very complex topic, and I could not describe the different causes any better than Wikipedia does, so if you want to learn more, you should check out their [article about color blindness](#).

## Dichromacy





# Trichromacy



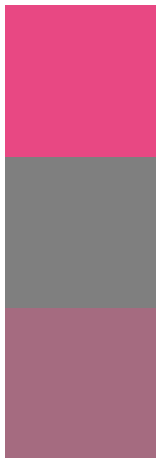
**Original Color**  
15222915

**Protanomaly**  
10776218

**Deuteranomaly**  
11824254

**Tritanomaly**  
15093351

# Monochromacy



**Original Color**  
15222915

**Achromatopsia**  
8355711

**Achromatomaly**  
10840960

# CSS Examples

## Text

The CSS property to change the color of the text to Decimal 15222915 is called "color". The color property can be set on classes, ids or directly on the HTML element.

This example shows how text in the color #E84883 looks like.

```
.text, #text, p{  
  color:#E84883  
}
```

If you want to add a text shadow in that color use the text-shadow property, you can generate a text shadow directly with our [CSS Text Shadow Generator](#).

Here you see how black text with a 4 pixel #E84883 colored shadow looks like.

```
.shadow{ text-shadow: 4px 4px 2px #E84883
}
```

## Border

The CSS property to change the border of an element to Decimal 15222915 is called "border". The border property can be set on classes, ids or directly on the HTML element.

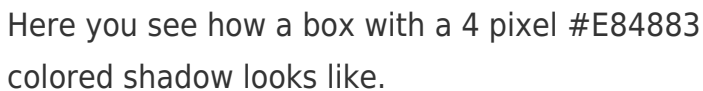
This example shows the color as border, it can be applied via the CSS property "border" or "border-color".

```
.border, #border, table{ border:4px solid
#E84883 }
```

If only the border color should be changed use the property `border-color`.

```
.border{ border-color:#E84883 }
```

If you want to add a box shadow in that color use:



Here you see how a box with a 4 pixel #E84883 colored shadow looks like.

```
.boxshadow{ -moz-box-shadow:4px 4px 4px  
4px #E84883; -webkit-box-shadow:4px 4px  
4px 4px #E84883; box-shadow:4px 4px 4px  
4px #E84883 }
```

# Background

The CSS property to change the background color of an element to Decimal 15222915 is called "background". The background property can be set on classes, ids or directly on the HTML element.

```
.background, #background, body{  
background:#E84883 }
```

If only the background color should be changed can be used:

```
.background{ background-color:#E84883 }
```

This example shows the color as background, it is applied via the CSS property "background".

To optimize and compress your CSS code, you can use our [online CSS compressor and optimizer](#) based on csstidy. If you want to create a linear or radial gradient as background or border, check our [CSS Gradient Generator](#).



Hey! You found this booklet interesting? Support Converting Colors with the new Membership Option!

The pro membership hides all ads, plus gives you double the colors in the color bucket, and more awesome pro features!

**[Learn more, Memberships starting at \\$2.50/m!](#)**

**Follow me  
on Twitter!**

@ConvertingColor