

Converting Colors

Decimal(15223408)

Have a look what the booklet for
Decimal(15223408) contains.

Decimal(15223408)	3
<i>Conversions</i>	4
<i>Details</i>	6
<i>Harmonies</i>	11
<i>Previews</i>	23
<i>Color Blindness Simulation</i>	26
<i>CSS Examples</i>	29

Color

Decimal(15223408)

Conversions

Conversions Part 1

Format	Color
Hex	E84A70
RGB	232, 74, 112
RGB Percent	91%, 29%, 44%
CMY	0.0902, 0.7098, 0.5608
CMYK	0.00, 0.68, 0.52, 0.09
HSL	346°, 77%, 60%
HSV	346°, 68%, 91%
XYZ	38.6521, 23.2232, 17.7746
YIQ	125.5740, 81.9700, 45.3140

Conversions

Conversions Part 2

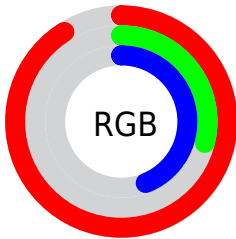
Format	Color
R_{YB}	232, 74, 112
Decimal	15223408
CIE Lab	55.30, 63.10, 13.63
CIE LCh	55, 64.558, 12.187
Yxy	23.2232, 0.4853, 0.2916
Android (android.graphics.Color)	4293413488 (0xFFE84A70)
YUV	125.5740, -6.6920, 93.3356
Hunter-Lab	48.1905, 58.8361, 11.8648

Details

The Decimal color **15223408** is a dark color, and the websafe version is hex **CC3366**. The color can be described as middle muted rose. A complement of this color would be **4909250**, and the grayscale version is **8289918**.

A 20% lighter version of the original color is **16745635**, and **11141185** is the 20% darker color. If you saturate the color by 10%, you get **15217502**, and if you desaturate by 10%, it is **15229314**.

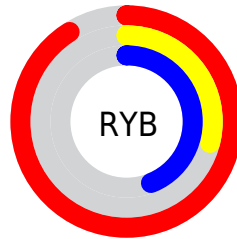
Distribution



Red (91%)

Green (29%)

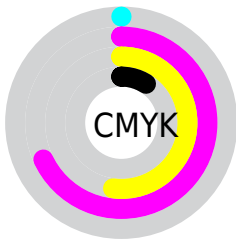
Blue (44%)



Red (91%)

Yellow (29%)

Blue (44%)

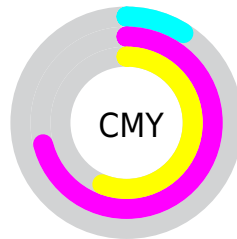


Cyan (0%)

Magenta (68%)

Yellow (52%)

Black (9%)



Cyan (9%)

Magenta (71%)

Yellow (56%)

Brightness & Saturation Gradients

These gradients show how the Decimal color 15223408 changes by changing the brightness by 10 percent. The first figure shows a shift by +10% for each color and the second figure -10%.

Similar to the brightness gradients but the following saturation gradients show a change of the Decimal color 15223408 by changing the saturation by 10% instead.


 15223408  15223408

16777215  13183576

 16745635  11141185

 16752830  9175083

 16760282  7208983

 16767991  5308417

 16775423  3407874

 0

 15223408  15223408

 15217502  15229314

 15211597

 15235219

 15205435

 15241381

 15204408

 15247286

 15253192

 15259098

 15265003

 15269885

 15269887

Harmonies

Analogous

The Analogous color harmony consists of three colors that are next to each other on the color wheel.



14111144



15223408



14441787

Triad

The Triadic color harmony groups three colors that are evenly spaced from another and form a triangle on the color wheel.



15223408



4887848



38127

Complementary

The Complementary color scheme is a pair of colors which are on the opposite of each other on the color wheel.



15223408



4909250

Split Complementary

Split-complementary colors differ from the complementary color scheme. The scheme consists of three colors, the original color and two neighbors of the complement color.



40143



15223408



40032

Square

The Square scheme is like the rectangle color scheme, but the four colors are evenly spaced on the color wheel.



15223408



9079040



40602



2655219

Rectangle

The Rectangle color scheme consists of four colors that form a rectangle on the color wheel.



15223408



13069593



40602



38887

Sweetspot

The Sweet Spot groups the original color and five complimentary colors.



15223408



16764120



12602088



8413544



0



8421504

Same Dimension

The Same Dimension uses a secret algorithm to generate beautiful new colors.



15223408



16723552



15233610



7563114



11730987



3342348

Inverse Universe

The Inverse Universe completely reimagines the original color for something new.



15223408



16723552



4899048



7563114



11730987



3342348

Previews

White Background



This preview shows how the Decimal color 15223408 looks on a white background.

Color Contrast Check

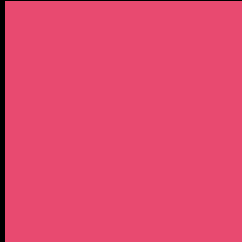
Large Text (above 18pt) WCAG AA ✓ Pass

Any Text WCAG AA × Fail

Large Text (above 18pt) WCAG AAA × Fail

Any Text WCAG AAA × Fail

Black Background



This preview shows how the Decimal color 15223408 looks on a black background.

Color Contrast Check

Large Text (above 18pt) WCAG AA ✓ Pass

Any Text WCAG AA ✓ Pass

Large Text (above 18pt) WCAG AAA ✓ Pass

Any Text WCAG AAA × Fail

If you want to check with other color combinations, try the [Color Contrast Checker](#).

Decimal 15223408 Background



This preview shows how black text looks on a background with the Decimal color 15223408.



This preview shows how white text looks on a background with the Decimal color 15223408.

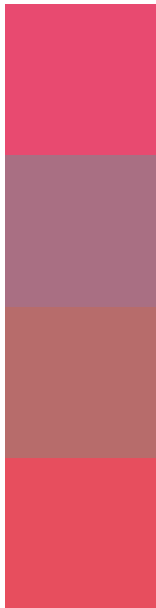
Color Blindness Simulation

Color vision deficiency is a very complex topic, and I could not describe the different causes any better than Wikipedia does, so if you want to learn more, you should check out their [article about color blindness](#).

Dichromacy



Trichromacy



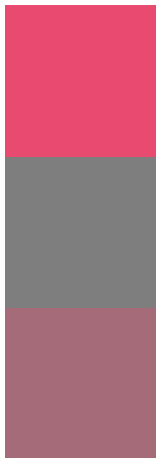
Original Color
15223408

Protanomaly
11104131

Deuteranomaly
12020843

Tritanomaly
15158878

Monochromacy



Original Color
15223408

Achromatopsia
8289918

Achromatomaly
10840953

CSS Examples

Text

The CSS property to change the color of the text to Decimal 15223408 is called "color". The color property can be set on classes, ids or directly on the HTML element.

This example shows how text in the color #E84A70 looks like.

```
.text, #text, p{  
  color:#E84A70  
}
```

If you want to add a text shadow in that color use the text-shadow property, you can generate a text shadow directly with our [CSS Text Shadow Generator](#).

Here you see how black text with a 4 pixel #E84A70 colored shadow looks like.

```
.shadow{ text-shadow: 4px 4px 2px #E84A70
}
```

Border

The CSS property to change the border of an element to Decimal 15223408 is called "border". The border property can be set on classes, ids or directly on the HTML element.

This example shows the color as border, it can be applied via the CSS property "border" or "border-color".

```
.border, #border, table{ border:4px solid
#E84A70 }
```

If only the border color should be changed use the property `border-color`.

```
.border{ border-color:#E84A70 }
```

If you want to add a box shadow in that color use:

Here you see how a box with a 4 pixel #E84A70 colored shadow looks like.

```
.boxshadow{ -moz-box-shadow:4px 4px 4px  
4px #E84A70; -webkit-box-shadow:4px 4px  
4px 4px #E84A70; box-shadow:4px 4px 4px  
4px #E84A70 }
```

Background

The CSS property to change the background color of an element to Decimal 15223408 is called "background". The background property can be set on classes, ids or directly on the HTML element.

```
.background, #background, body{  
background:#E84A70 }
```

If only the background color should be changed can be used:

```
.background{ background-color:#E84A70 }
```

This example shows the color as background, it is applied via the CSS property "background".

To optimize and compress your CSS code, you can use our [online CSS compressor and optimizer](#) based on csstidy. If you want to create a linear or radial gradient as background or border, check our [CSS Gradient Generator](#).

Hey! You found this booklet interesting? Support Converting Colors with the new Membership Option!

The pro membership hides all ads, plus gives you double the colors in the color bucket, and more awesome pro features!

[Learn more, Memberships starting at \\$2.50/m!](#)

**Follow me
on Twitter!**

@ConvertingColor