

# Converting Colors

Decimal(15226243)

Have a look what the booklet for  
Decimal(15226243) contains.

<b>Decimal(15226243)</b> .....	3
<i><b>Conversions</b></i> .....	4
<i><b>Details</b></i> .....	6
<i><b>Harmonies</b></i> .....	11
<i><b>Previews</b></i> .....	23
<i><b>Color Blindness Simulation</b></i> .....	26
<i><b>CSS Examples</b></i> .....	29

# **Color**

**Decimal(15226243)**

# Conversions

## Conversions Part 1

<b>Format</b>	<b>Color</b>
Hex	E85583
RGB	232, 85, 131
RGB Percent	91%, 33%, 51%
CMY	0.0902, 0.6667, 0.4863
CMYK	0.00, 0.63, 0.44, 0.09
HSL	341°, 76%, 62%
HSV	341°, 63%, 91%
XYZ	40.6239, 25.2915, 24.2134
YIQ	134.1970, 72.8460, 45.4700

# Conversions

## Conversions Part 2

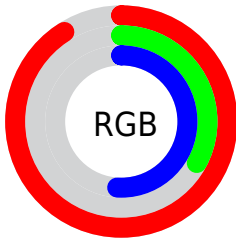
<b>Format</b>	<b>Color</b>
<b>R<sub>YB</sub></b>	232, 85, 131
Decimal	15226243
CIE <sub>Lab</sub>	57.36, 60.43, 5.31
CIE <sub>LCh</sub>	57, 60.666, 5.021
Yxy	25.2915, 0.4507, 0.2806
Android (android.graphics.Color)	4293416323 (0xFFE85583)
YUV	134.1970, -1.5761, 85.7732
Hunter-Lab	50.2907, 56.1807, 6.6572

# Details

The Decimal color **15226243** is a light color, and the websafe version is hex **FF6699**. The color can be described as light muted rose. A complement of this color would be **5630138**, and the grayscale version is **8816262**.

A 20% lighter version of the original color is **16748216**, and **11211090** is the 20% darker color. If you saturate the color by 10%, you get **15220339**, and if you desaturate by 10%, it is **15232147**.

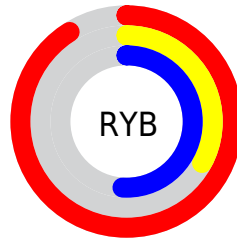
# Distribution



Red (91%)

Green (33%)

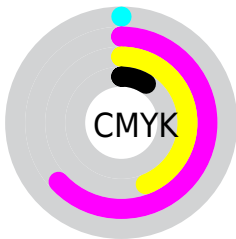
Blue (51%)



Red (91%)

Yellow (33%)

Blue (51%)

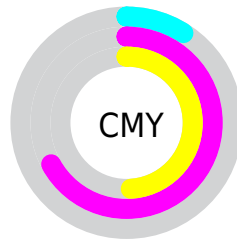


Cyan (0%)

Magenta (63%)

Yellow (44%)

Black (9%)



Cyan (9%)

Magenta (67%)

Yellow (49%)

# Brightness & Saturation Gradients

These gradients show how the Decimal color 15226243 changes by changing the brightness by 10 percent. The first figure shows a shift by +10% for each color and the second figure -10%.

Similar to the brightness gradients but the following saturation gradients show a change of the Decimal color 15226243 by changing the saturation by 10% instead.



 15226243

 15226243

16777215

 13252458

 16748216

 11211090

 16755411

 9306171

 16762864

 7405606

 16770303

 5505041

 3735554

 983040

 0

 15226243

 15226243

 15220339

 15232147

 15214435

 15238051

 15208275

 15244211

 15204425

 15250115

 15256019

 15261923

 15267827

 15269887

# Harmonies

## Analogous

The Analogous color harmony consists of three colors that are next to each other on the color wheel.



13656247



15226243



14901328

# Triad

The Triadic color harmony groups three colors that are evenly spaced from another and form a triangle on the color wheel.



15226243



6658090



39913

# Complementary

The Complementary color scheme is a pair of colors which are on the opposite of each other on the color wheel.



15226243



5630138

# Split Complementary

Split-complementary colors differ from the complementary color scheme. The scheme consists of three colors, the original color and two neighbors of the complement color.



41413



15226243



40795

# Square

The Square scheme is like the rectangle color scheme, but the four colors are evenly spaced on the color wheel.



15226243



10258952



41873



36340

# Rectangle

The Rectangle color scheme consists of four colors that form a rectangle on the color wheel.



15226243



13791026



41873



40672



# Sweetspot

The Sweet Spot groups the original color and five complimentary colors.



15226243



16764894



12146152



8413803



0



8421504



# Same Dimension

The Same Dimension uses a secret algorithm to generate beautiful new colors.



15226243



16727418



15233109



7563115



11731000



3342352



# Inverse Universe

The Inverse Universe completely reimagines the original color for something new.



15226243



16727418



5623272



7563115



11731000



3342352



# Previews

## White Background



This preview shows how the Decimal color 15226243 looks on a white background.

## Color Contrast Check

Large Text (above 18pt) WCAG AA ✓ Pass

Any Text WCAG AA × Fail

Large Text (above 18pt) WCAG AAA × Fail

Any Text WCAG AAA × Fail

# Black Background



This preview shows how the Decimal color 15226243 looks on a black background.

## Color Contrast Check

Large Text (above 18pt) WCAG AA ✓ Pass

Any Text WCAG AA ✓ Pass

Large Text (above 18pt) WCAG AAA ✓ Pass

Any Text WCAG AAA × Fail

If you want to check with other color combinations, try the [Color Contrast Checker](#).



## Decimal 15226243 Background



This preview shows how black text looks on a background with the Decimal color 15226243.



This preview shows how white text looks on a background with the Decimal color 15226243.

# Color Blindness Simulation

Color vision deficiency is a very complex topic, and I could not describe the different causes any better than Wikipedia does, so if you want to learn more, you should check out their [article about color blindness](#).

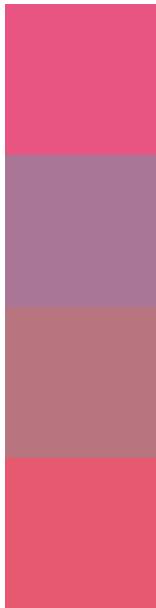
## Dichromacy





**Tritanopia**  
15096930

# Trichromacy



**Original Color**  
15226243

**Protanomaly**  
11171478

**Deuteranomaly**  
12088447

**Tritanomaly**  
15161710

# Monochromacy



**Original Color**  
15226243

**Achromatopsia**  
8816262

**Achromatomaly**  
11170949

# CSS Examples

## Text

The CSS property to change the color of the text to Decimal 15226243 is called "color". The color property can be set on classes, ids or directly on the HTML element.

This example shows how text in the color #E85583 looks like.

```
.text, #text, p{  
  color:#E85583  
}
```

If you want to add a text shadow in that color use the text-shadow property, you can generate a text shadow directly with our [CSS Text Shadow Generator](#).

Here you see how black text with a 4 pixel #E85583 colored shadow looks like.

```
.shadow{ text-shadow: 4px 4px 2px #E85583
}
```

## Border

The CSS property to change the border of an element to Decimal 15226243 is called "border". The border property can be set on classes, ids or directly on the HTML element.

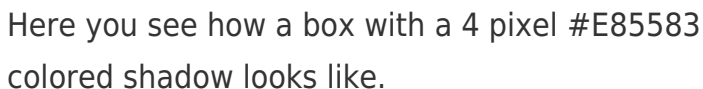
This example shows the color as border, it can be applied via the CSS property "border" or "border-color".

```
.border, #border, table{ border:4px solid
#E85583 }
```

If only the border color should be changed use the property `border-color`.

```
.border{ border-color:#E85583 }
```

If you want to add a box shadow in that color use:



Here you see how a box with a 4 pixel #E85583 colored shadow looks like.

```
.boxshadow{ -moz-box-shadow:4px 4px 4px  
4px #E85583; -webkit-box-shadow:4px 4px  
4px 4px #E85583; box-shadow:4px 4px 4px  
4px #E85583 }
```

# Background

The CSS property to change the background color of an element to Decimal 15226243 is called "background". The background property can be set on classes, ids or directly on the HTML element.

```
.background, #background, body{  
background:#E85583 }
```

If only the background color should be changed can be used:

```
.background{ background-color:#E85583 }
```

This example shows the color as background, it is applied via the CSS property "background".

To optimize and compress your CSS code, you can use our [online CSS compressor and optimizer](#) based on csstidy. If you want to create a linear or radial gradient as background or border, check our [CSS Gradient Generator](#).



Hey! You found this booklet interesting? Support Converting Colors with the new Membership Option!

The pro membership hides all ads, plus gives you double the colors in the color bucket, and more awesome pro features!

**[Learn more, Memberships starting at \\$2.50/m!](#)**

**Follow me  
on Twitter!**

@ConvertingColor