

# Converting Colors

Decimal(15227774)

Have a look what the booklet for  
Decimal(15227774) contains.

<b>Decimal(15227774)</b> .....	3
<b><i>Conversions</i></b> .....	4
<b><i>Details</i></b> .....	6
<b><i>Harmonies</i></b> .....	11
<b><i>Previews</i></b> .....	23
<b><i>Color Blindness Simulation</i></b> .....	26
<b><i>CSS Examples</i></b> .....	29

# Color

**Decimal(15227774)**

# Conversions

## Conversions Part 1

<b>Format</b>	<b>Color</b>
Hex	E85B7E
RGB	232, 91, 126
RGB Percent	91%, 36%, 49%
CMY	0.0902, 0.6431, 0.5059
CMYK	0.00, 0.61, 0.46, 0.09
HSL	345°, 75%, 63%
HSV	345°, 61%, 91%
XYZ	40.7857, 26.1443, 22.6354
YIQ	137.1490, 72.8010, 40.7770

# Conversions

## Conversions Part 2

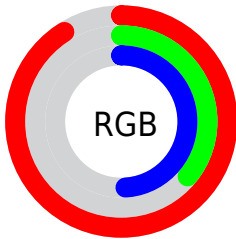
<b>Format</b>	<b>Color</b>
<b>R<sub>YB</sub></b>	232, 91, 126
Decimal	15227774
CIE <sub>Lab</sub>	58.17, 57.42, 9.41
CIE <sub>LCh</sub>	58, 58.183, 9.305
Yxy	26.1443, 0.4554, 0.2919
Android (android.graphics.Color)	4293417854 (0xFFE85B7E)
YUV	137.1490, -5.4965, 83.1843
Hunter-Lab	51.1315, 52.9025, 9.5450

# Details

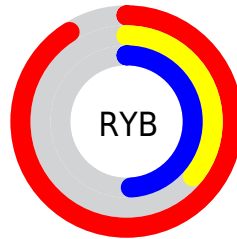
The Decimal color **15227774** is a dark color, and the websafe version is hex **FF6699**. The color can be described as middle muted rose. A complement of this color would be **6023365**, and the grayscale version is **9013641**.

A 20% lighter version of the original color is **16749490**, and **11279949** is the 20% darker color. If you saturate the color by 10%, you get **15221869**, and if you desaturate by 10%, it is **15233679**.

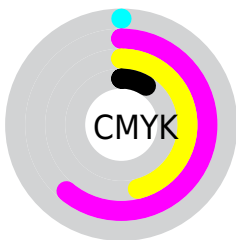
# Distribution



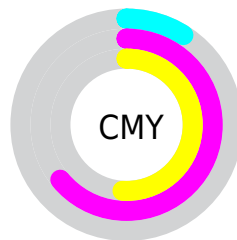
- Red (91%)
- Green (36%)
- Blue (49%)



- Red (91%)
- Yellow (36%)
- Blue (49%)



- Cyan (0%)
- Magenta (61%)
- Yellow (46%)
- Black (9%)



- Cyan (9%)
- Magenta (64%)
- Yellow (51%)

# Brightness & Saturation Gradients

These gradients show how the Decimal color 15227774 changes by changing the brightness by 10 percent. The first figure shows a shift by +10% for each color and the second figure -10%.

Similar to the brightness gradients but the following saturation gradients show a change of the Decimal color 15227774 by changing the saturation by 10% instead.



 15227774

 15227774

16777215

 13254245

 16749490

 11279949

 16756686

 9306167

 16764138

 7405602

 16771583

 5505035

 3735554

 1048576

 0

 15227774

 15227774

 15221869

 15233679

 15215963

 15239585

 15209802

 15245746

 15204410

 15251652

 15257557

 15263463

 15269368

 15269887

# Harmonies

## Analogous

The Analogous color harmony consists of three colors that are next to each other on the color wheel.



13984433



15227774



14706766

# Triad

The Triadic color harmony groups three colors that are evenly spaced from another and form a triangle on the color wheel.



15227774



6331191



39915

# Complementary

The Complementary color scheme is a pair of colors which are on the opposite of each other on the color wheel.



15227774



6023365

# Split Complementary

Split-complementary colors differ from the complementary color scheme. The scheme consists of three colors, the original color and two neighbors of the complement color.



41675



15227774



41574

# Square

The Square scheme is like the rectangle color scheme, but the four colors are evenly spaced on the color wheel.



15227774



9932313



42139



3968241

# Rectangle

The Rectangle color scheme consists of four colors that form a rectangle on the color wheel.



15227774



13530419



42139



40675



# Sweetspot

The Sweet Spot groups the original color and five complimentary colors.



15227774



16765404



12934120



8414058



0



8421504



# Same Dimension

The Same Dimension uses a secret algorithm to generate beautiful new colors.



15227774



16729459



15236699



7563114



11730988



3342349



# Inverse Universe

The Inverse Universe completely reimagines the original color for something new.



15227774



16729459



6014440



7563114



11730988



3342349



# Previews

## White Background



This preview shows how the Decimal color 15227774 looks on a white background.

## Color Contrast Check

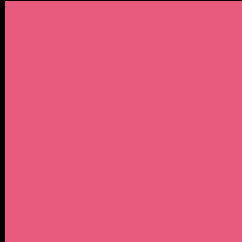
Large Text (above 18pt) WCAG AA ✓ Pass

Any Text WCAG AA × Fail

Large Text (above 18pt) WCAG AAA × Fail

Any Text WCAG AAA × Fail

# Black Background



This preview shows how the Decimal color 15227774 looks on a black background.

## Color Contrast Check

Large Text (above 18pt) WCAG AA ✓ Pass

Any Text WCAG AA ✓ Pass

Large Text (above 18pt) WCAG AAA ✓ Pass

Any Text WCAG AAA × Fail

If you want to check with other color combinations, try the [Color Contrast Checker](#).



## Decimal 15227774 Background



This preview shows how black text looks on a background with the Decimal color 15227774.



This preview shows how white text looks on a background with the Decimal color 15227774.

# Color Blindness Simulation

Color vision deficiency is a very complex topic, and I could not describe the different causes any better than Wikipedia does, so if you want to learn more, you should check out their [article about color blindness](#).

## Dichromacy



**Original Color**  
15227774

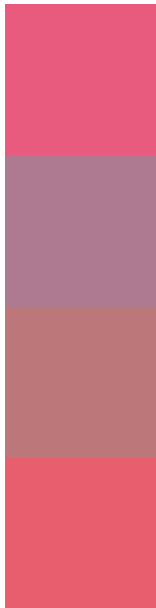
**Protanopia**  
9145241

**Deuteranopia**  
10585975



**Tritanopia**  
15097958

# Trichromacy



**Original Color**  
15227774

**Protanomaly**  
11369103

**Deuteranomaly**  
12285818

**Tritanomaly**  
15162991

# Monochromacy



**Original Color**  
15227774

**Achromatopsia**  
9013641

**Achromatomaly**  
11303045

# CSS Examples

## Text

The CSS property to change the color of the text to Decimal 15227774 is called "color". The color property can be set on classes, ids or directly on the HTML element.

This example shows how text in the color #E85B7E looks like.

```
.text, #text, p{  
    color:#E85B7E  
}
```

If you want to add a text shadow in that color use the text-shadow property, you can generate a text shadow directly with our [CSS Text Shadow Generator](#).

Here you see how black text with a 4 pixel #E85B7E colored shadow looks like.

```
.shadow{ text-shadow: 4px 4px 2px #E85B7E
}
```

## Border

The CSS property to change the border of an element to Decimal 15227774 is called "border". The border property can be set on classes, ids or directly on the HTML element.

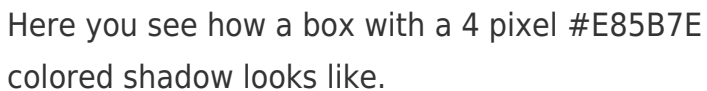
This example shows the color as border, it can be applied via the CSS property "border" or "border-color".

```
.border, #border, table{ border:4px solid
#E85B7E }
```

If only the border color should be changed use the property `border-color`.

```
.border{ border-color:#E85B7E }
```

If you want to add a box shadow in that color use:



Here you see how a box with a 4 pixel #E85B7E colored shadow looks like.

```
.boxshadow{ -moz-box-shadow:4px 4px 4px  
4px #E85B7E; -webkit-box-shadow:4px 4px  
4px 4px #E85B7E; box-shadow:4px 4px 4px  
4px #E85B7E }
```

# Background

The CSS property to change the background color of an element to Decimal 15227774 is called "background". The background property can be set on classes, ids or directly on the HTML element.

```
.background, #background, body{  
background:#E85B7E }
```

If only the background color should be changed can be used:

```
.background{ background-color:#E85B7E }
```

This example shows the color as background, it is applied via the CSS property "background".

To optimize and compress your CSS code, you can use our [online CSS compressor and optimizer](#) based on csstidy. If you want to create a linear or radial gradient as background or border, check our [CSS Gradient Generator](#).



Hey! You found this booklet interesting? Support Converting Colors with the new Membership Option!

The pro membership hides all ads, plus gives you double the colors in the color bucket, and more awesome pro features!

**[Learn more, Memberships starting at \\$2.50/m!](#)**

**Follow me  
on Twitter!**

@ConvertingColor