

Converting Colors

Decimal(15230861)

Have a look what the booklet for
Decimal(15230861) contains.

Decimal(15230861)	3
<i>Conversions</i>	4
<i>Details</i>	6
<i>Harmonies</i>	11
<i>Previews</i>	23
<i>Color Blindness Simulation</i>	26
<i>CSS Examples</i>	29

Color

Decimal(15230861)

Conversions

Conversions Part 1

Format	Color
Hex	E8678D
RGB	232, 103, 141
RGB Percent	91%, 40%, 55%
CMY	0.0902, 0.5961, 0.4471
CMYK	0.00, 0.56, 0.39, 0.09
HSL	342°, 74%, 66%
HSV	342°, 56%, 91%
XYZ	42.9367, 28.7794, 28.4913
YIQ	145.9030, 64.6860, 39.1660

Conversions

Conversions Part 2

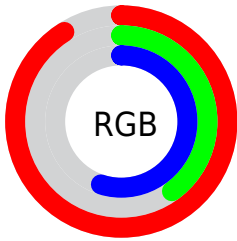
Format	Color
R _Y B	232, 103, 141
Decimal	15230861
CIE Lab	60.59, 53.53, 4.12
CIE LCh	61, 53.693, 4.404
Yxy	28.7794, 0.4285, 0.2872
Android (android.graphics.Color)	4293420941 (0xFFE8678D)
YUV	145.9030, -2.4172, 75.5071
Hunter-Lab	53.6464, 48.9838, 6.0640

Details

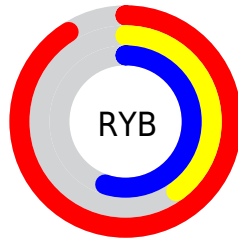
The Decimal color **15230861** is a light color, and the websafe version is hex **FF6699**. A complement of this color would be **6809794**, and the grayscale version is **9605778**.

A 20% lighter version of the original color is **16752322**, and **11284315** is the 20% darker color. If you saturate the color by 10%, you get **15224957**, and if you desaturate by 10%, it is **15236765**.

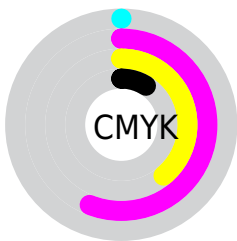
Distribution



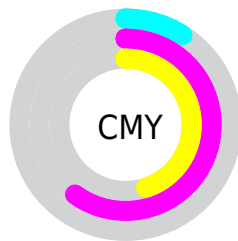
- Red (91%)
- Green (40%)
- Blue (55%)



- Red (91%)
- Yellow (40%)
- Blue (55%)



- Cyan (0%)
- Magenta (56%)
- Yellow (39%)
- Black (9%)



- Cyan (9%)
- Magenta (60%)
- Yellow (45%)

Brightness & Saturation Gradients

These gradients show how the Decimal color 15230861 changes by changing the brightness by 10 percent. The first figure shows a shift by +10% for each color and the second figure -10%.

Similar to the brightness gradients but the following saturation gradients show a change of the Decimal color 15230861 by changing the saturation by 10% instead.

 15230861

 15230861

16777215

 13257844

 16752322

 11284315

 16759518

 9374020

 16766971

 7536686

 16774399

 5636121

 3997698

 1703937

 0

 15230861

 15230861

■ 15224957

■ 15236765

■ 15219052

■ 15242670

■ 15212892

■ 15248830

■ 15206988

■ 15254734

■ 15204420

■ 15260639

■ 15266543

■ 15269887

Harmonies

Analogous

The Analogous color harmony consists of three colors that are next to each other on the color wheel.



13725884



15230861



14970719

Triad

The Triadic color harmony groups three colors that are evenly spaced from another and form a triangle on the color wheel.



15230861



7642943



41703

Complementary

The Complementary color scheme is a pair of colors which are on the opposite of each other on the color wheel.



15230861



6809794

Split Complementary

Split-complementary colors differ from the complementary color scheme. The scheme consists of three colors, the original color and two neighbors of the complement color.



43206



15230861



2664039

Square

The Square scheme is like the rectangle color scheme, but the four colors are evenly spaced on the color wheel.



15230861



10850860



43416



3905009

Rectangle

The Rectangle color scheme consists of four colors that form a rectangle on the color wheel.



15230861



14056006



43416



42462

Sweetspot

The Sweet Spot groups the original color and five complimentary colors.



15230861



16766176



12675048



8414830



0



8421504

Same Dimension

The Same Dimension uses a secret algorithm to generate beautiful new colors.



15230861



16733318



15237479



7563115



11730997



3342351

Inverse Universe

The Inverse Universe completely reimagines the original color for something new.



15230861



16733318



6803176



7563115



11730997



3342351

Previews

White Background



This preview shows how the Decimal color 15230861 looks on a white background.

Color Contrast Check

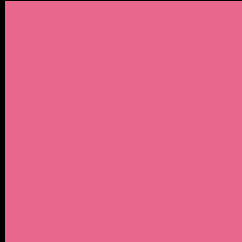
Large Text (above 18pt) WCAG AA ✓ Pass

Any Text WCAG AA × Fail

Large Text (above 18pt) WCAG AAA × Fail

Any Text WCAG AAA × Fail

Black Background



This preview shows how the Decimal color 15230861 looks on a black background.

Color Contrast Check

Large Text (above 18pt) WCAG AA ✓ Pass

Any Text WCAG AA ✓ Pass

Large Text (above 18pt) WCAG AAA ✓ Pass

Any Text WCAG AAA × Fail

If you want to check with other color combinations, try the [Color Contrast Checker](#).

Decimal 15230861 Background



This preview shows how black text looks on a background with the Decimal color 15230861.



This preview shows how white text looks on a background with the Decimal color 15230861.

Color Blindness Simulation

Color vision deficiency is a very complex topic, and I could not describe the different causes any better than Wikipedia does, so if you want to learn more, you should check out their [article about color blindness](#).

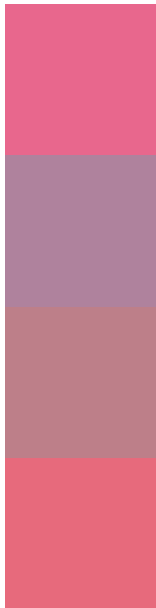
Dichromacy





Tritanopia
15101043

Trichromacy



Original Color
15230861

Protanomaly
11502237

Deuteranomaly
12418953

Tritanomaly
15166076

Monochromacy



Original Color
15230861

Achromatopsia
9605778

Achromatomaly
11633296

CSS Examples

Text

The CSS property to change the color of the text to Decimal 15230861 is called "color". The color property can be set on classes, ids or directly on the HTML element.

This example shows how text in the color #E8678D looks like.

```
.text, #text, p{  
  color:#E8678D  
}
```

If you want to add a text shadow in that color use the text-shadow property, you can generate a text shadow directly with our [CSS Text Shadow Generator](#).

Here you see how black text with a 4 pixel #E8678D colored shadow looks like.

```
.shadow{ text-shadow: 4px 4px 2px #E8678D
}
```

Border

The CSS property to change the border of an element to Decimal 15230861 is called "border". The border property can be set on classes, ids or directly on the HTML element.

This example shows the color as border, it can be applied via the CSS property "border" or "border-color".

```
.border, #border, table{ border:4px solid
#E8678D }
```

If only the border color should be changed use the property `border-color`.

```
.border{ border-color:#E8678D }
```

If you want to add a box shadow in that color use:

Here you see how a box with a 4 pixel #E8678D colored shadow looks like.

```
.boxshadow{ -moz-box-shadow:4px 4px 4px  
4px #E8678D; -webkit-box-shadow:4px 4px  
4px 4px #E8678D; box-shadow:4px 4px 4px  
4px #E8678D }
```

Background

The CSS property to change the background color of an element to Decimal 15230861 is called "background". The background property can be set on classes, ids or directly on the HTML element.

```
.background, #background, body{  
background:#E8678D }
```

If only the background color should be changed can be used:

```
.background{ background-color:#E8678D }
```

This example shows the color as background, it is applied via the CSS property "background".

To optimize and compress your CSS code, you can use our [online CSS compressor and optimizer](#) based on csstidy. If you want to create a linear or radial gradient as background or border, check our [CSS Gradient Generator](#).

Hey! You found this booklet interesting? Support Converting Colors with the new Membership Option!

The pro membership hides all ads, plus gives you double the colors in the color bucket, and more awesome pro features!

[Learn more, Memberships starting at \\$2.50/m!](#)

**Follow me
on Twitter!**

@ConvertingColor