

Converting Colors

Decimal(15231869)

Have a look what the booklet for
Decimal(15231869) contains.

Decimal(15231869)	3
<i>Conversions</i>	4
<i>Details</i>	6
<i>Harmonies</i>	11
<i>Previews</i>	23
<i>Color Blindness Simulation</i>	26
<i>CSS Examples</i>	29

Color

Decimal(15231869)

Conversions

Conversions Part 1

Format	Color
Hex	E86B7D
RGB	232, 107, 125
RGB Percent	91%, 42%, 49%
CMY	0.0902, 0.5804, 0.5098
CMYK	0.00, 0.54, 0.46, 0.09
HSL	351°, 73%, 66%
HSV	351°, 54%, 91%
XYZ	42.2381, 29.1519, 22.8027
YIQ	146.4270, 68.7220, 32.0980

Conversions

Conversions Part 2

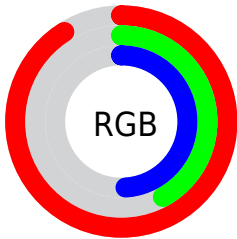
Format	Color
R _Y B	232, 107, 125
Decimal	15231869
CIE Lab	60.92, 50.02, 13.84
CIE LCh	61, 51.904, 15.468
Yxy	29.1519, 0.4484, 0.3095
Android (android.graphics.Color)	4293421949 (0xFFE86B7D)
YUV	146.4270, -10.5635, 75.0475
Hunter-Lab	53.9925, 45.1530, 12.7547

Details

The Decimal color **15231869** is a light color, and the websafe version is hex **CC6666**. A complement of this color would be **7071958**, and the grayscale version is **9605778**.

A 20% lighter version of the original color is **16753329**, and **11285836** is the 20% darker color. If you saturate the color by 10%, you get **15225961**, and if you desaturate by 10%, it is **15237777**.

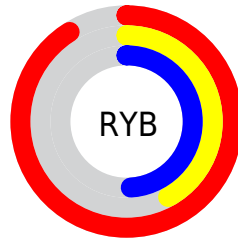
Distribution



Red (91%)

Green (42%)

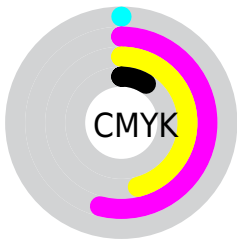
Blue (49%)



Red (91%)

Yellow (42%)

Blue (49%)

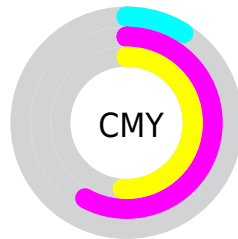


Cyan (0%)

Magenta (54%)

Yellow (46%)

Black (9%)



Cyan (9%)

Magenta (58%)

Yellow (51%)

Brightness & Saturation Gradients

These gradients show how the Decimal color 15231869 changes by changing the brightness by 10 percent. The first figure shows a shift by +10% for each color and the second figure -10%.

Similar to the brightness gradients but the following saturation gradients show a change of the Decimal color 15231869 by changing the saturation by 10% instead.

 15231869

 15231869

16777215

 13258852

 16753329

 11285836

 16760525

 9377078

 16767977

 7471137

 16775423

 5570570

 3866626

 1507328

 0

 15231869

 15231869

■ 15225961

■ 15237777

■ 15220053

■ 15243685

■ 15213889

■ 15249849

■ 15207982

■ 15255756

■ 15204385

■ 15261664

■ 15267572

■ 15269887

Harmonies

Analogous

The Analogous color harmony consists of three colors that are next to each other on the color wheel.



14445995



15231869



14514003

Triad

The Triadic color harmony groups three colors that are evenly spaced from another and form a triangle on the color wheel.



15231869



6464080



40683

Complementary

The Complementary color scheme is a pair of colors which are on the opposite of each other on the color wheel.



15231869



7071958

Split Complementary

Split-complementary colors differ from the complementary color scheme. The scheme consists of three colors, the original color and two neighbors of the complement color.



42963



15231869



43130

Square

The Square scheme is like the rectangle color scheme, but the four colors are evenly spaced on the color wheel.



15231869



9869365



43690



7180523

Rectangle

The Rectangle color scheme consists of four colors that form a rectangle on the color wheel.



15231869



13337406



43690



41702

Sweetspot

The Sweet Spot groups the original color and five complimentary colors.



15231869



16766684



13986792



8415083



0



8421504

Same Dimension

The Same Dimension uses a secret algorithm to generate beautiful new colors.



15231869



16734577



15243115



7563113



11730970



3342343

Inverse Universe

The Inverse Universe completely reimagines the original color for something new.



15231869



16734577



7060712



7563113



11730970



3342343

Previews

White Background



This preview shows how the Decimal color 15231869 looks on a white background.

Color Contrast Check

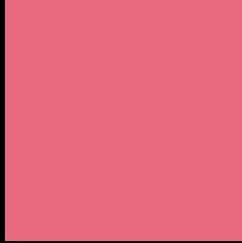
Large Text (above 18pt) WCAG AA ✓ Pass

Any Text WCAG AA × Fail

Large Text (above 18pt) WCAG AAA × Fail

Any Text WCAG AAA × Fail

Black Background



This preview shows how the Decimal color 15231869 looks on a black background.

Color Contrast Check

Large Text (above 18pt) WCAG AA ✓ Pass

Any Text WCAG AA ✓ Pass

Large Text (above 18pt) WCAG AAA ✓ Pass

Any Text WCAG AAA × Fail

If you want to check with other color combinations, try the [Color Contrast Checker](#).

Decimal 15231869 Background



This preview shows how black text looks on a background with the Decimal color 15231869.




This preview shows how white text looks on a background with the Decimal color 15231869.

Color Blindness Simulation

Color vision deficiency is a very complex topic, and I could not describe the different causes any better than Wikipedia does, so if you want to learn more, you should check out their [article about color blindness](#).

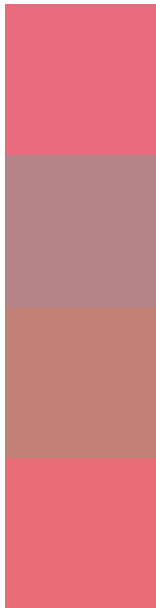
Dichromacy





Tritanopia
15166836

Trichromacy



Original Color
15231869

Protanomaly
11830410

Deuteranomaly
12681593

Tritanomaly
15166583

Monochromacy



Original Color
15231869

Achromatopsia
9605778

Achromatomaly
11633802

CSS Examples

Text

The CSS property to change the color of the text to Decimal 15231869 is called "color". The color property can be set on classes, ids or directly on the HTML element.

This example shows how text in the color #E86B7D looks like.

```
.text, #text, p{  
    color:#E86B7D  
}
```

If you want to add a text shadow in that color use the text-shadow property, you can generate a text shadow directly with our [CSS Text Shadow Generator](#).

Here you see how black text with a 4 pixel #E86B7D colored shadow looks like.

```
.shadow{ text-shadow: 4px 4px 2px #E86B7D
}
```

Border

The CSS property to change the border of an element to Decimal 15231869 is called "border". The border property can be set on classes, ids or directly on the HTML element.

This example shows the color as border, it can be applied via the CSS property "border" or "border-color".

```
.border, #border, table{ border:4px solid
#E86B7D }
```

If only the border color should be changed use the property `border-color`.

```
.border{ border-color:#E86B7D }
```

If you want to add a box shadow in that color use:

Here you see how a box with a 4 pixel #E86B7D colored shadow looks like.

```
.boxshadow{ -moz-box-shadow:4px 4px 4px  
4px #E86B7D; -webkit-box-shadow:4px 4px  
4px 4px #E86B7D; box-shadow:4px 4px 4px  
4px #E86B7D }
```

Background

The CSS property to change the background color of an element to Decimal 15231869 is called "background". The background property can be set on classes, ids or directly on the HTML element.

```
.background, #background, body{  
background:#E86B7D }
```

If only the background color should be changed can be used:

```
.background{ background-color:#E86B7D }
```

This example shows the color as background, it is applied via the CSS property "background".

To optimize and compress your CSS code, you can use our [online CSS compressor and optimizer](#) based on csstidy. If you want to create a linear or radial gradient as background or border, check our [CSS Gradient Generator](#).

Hey! You found this booklet interesting? Support Converting Colors with the new Membership Option!

The pro membership hides all ads, plus gives you double the colors in the color bucket, and more awesome pro features!

[Learn more, Memberships starting at \\$2.50/m!](#)

**Follow me
on Twitter!**

@ConvertingColor