

# Converting Colors

Decimal(15232127)

Have a look what the booklet for  
Decimal(15232127) contains.

<b>Decimal(15232127)</b> .....	3
<i><b>Conversions</b></i> .....	4
<i><b>Details</b></i> .....	6
<i><b>Harmonies</b></i> .....	11
<i><b>Previews</b></i> .....	23
<i><b>Color Blindness Simulation</b></i> .....	26
<i><b>CSS Examples</b></i> .....	29

# **Color**

**Decimal(15232127)**

# Conversions

## Conversions Part 1

Format	Color
Hex	E86C7F
RGB	232, 108, 127
RGB Percent	91%, 42%, 50%
CMY	0.0902, 0.5765, 0.5020
CMYK	0.00, 0.53, 0.45, 0.09
HSL	351°, 73%, 67%
HSV	351°, 53%, 91%
XYZ	42.4720, 29.4132, 23.5175
YIQ	147.2420, 67.8050, 32.1970

# Conversions

## Conversions Part 2

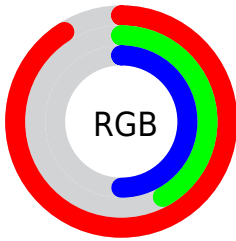
Format	Color
R <sub>Y</sub> B	232, 108, 127
Decimal	15232127
CIE Lab	61.14, 49.74, 13.01
CIE LCh	61, 51.413, 14.658
Yxy	29.4132, 0.4452, 0.3083
Android (android.graphics.Color)	4293422207 (0xFFE86C7F)
YUV	147.2420, -9.9793, 74.3328
Hunter-Lab	54.2340, 44.8786, 12.2539

# Details

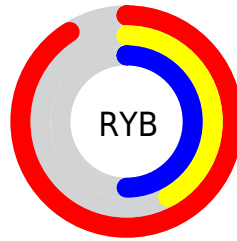
The Decimal color **15232127** is a light color, and the websafe version is hex **CC6666**. A complement of this color would be **7137493**, and the grayscale version is **9671571**.

A 20% lighter version of the original color is **16753588**, and **11286094** is the 20% darker color. If you saturate the color by 10%, you get **15226219**, and if you desaturate by 10%, it is **15238035**.

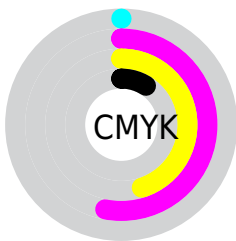
# Distribution



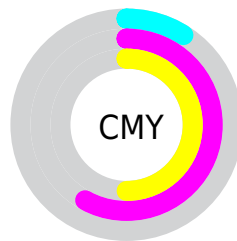
- Red (91%)
- Green (42%)
- Blue (50%)



- Red (91%)
- Yellow (42%)
- Blue (50%)



- Cyan (0%)
- Magenta (53%)
- Yellow (45%)
- Black (9%)



- Cyan (9%)
- Magenta (58%)
- Yellow (50%)

# Brightness & Saturation Gradients

These gradients show how the Decimal color 15232127 changes by changing the brightness by 10 percent. The first figure shows a shift by +10% for each color and the second figure -10%.

Similar to the brightness gradients but the following saturation gradients show a change of the Decimal color 15232127 by changing the saturation by 10% instead.



 15232127

 15232127

16777215

 13259110

 16753588

 11286094

 16760783

 9377592

 16768235

 7471138

 16775679

 5636109

 3932162

 1572865

 0

 15232127

 15232127

 15226219

 15238035

 15220312

 15243942

 15214148

 15250106

 15208240

 15256014

 15204388

 15261921

 15267829

 15269887

# Harmonies

## Analogous

The Analogous color harmony consists of three colors that are next to each other on the color wheel.



14380973



15232127



14514262

# Triad

The Triadic color harmony groups three colors that are evenly spaced from another and form a triangle on the color wheel.



15232127



6595408



40939

# Complementary

The Complementary color scheme is a pair of colors which are on the opposite of each other on the color wheel.



15232127



7137493

# Split Complementary

Split-complementary colors differ from the complementary color scheme. The scheme consists of three colors, the original color and two neighbors of the complement color.



42962



15232127



43386

# Square

The Square scheme is like the rectangle color scheme, but the four colors are evenly spaced on the color wheel.



15232127



10000438



43689



7115244

# Rectangle

The Rectangle color scheme consists of four colors that form a rectangle on the color wheel.



15232127



13402945



43689



41957



# Sweetspot

The Sweet Spot groups the original color and five complimentary colors.



15232127



16766684



13855976



8415083



0



8421504



# Same Dimension

The Same Dimension uses a secret algorithm to generate beautiful new colors.



15232127



16735349



15242604



7563113



11730971



3342344



# Inverse Universe

The Inverse Universe completely reimagines the original color for something new.



15232127



16735349



7127016



7563113



11730971



3342344



# Previews

## White Background



This preview shows how the Decimal color 15232127 looks on a white background.

## Color Contrast Check

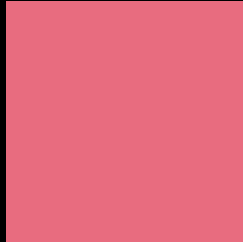
Large Text (above 18pt) WCAG AA ✓ Pass

Any Text WCAG AA ✗ Fail

Large Text (above 18pt) WCAG AAA ✗ Fail

Any Text WCAG AAA ✗ Fail

# Black Background



This preview shows how the Decimal color 15232127 looks on a black background.

## Color Contrast Check

Large Text (above 18pt) WCAG AA ✓ Pass

Any Text WCAG AA ✓ Pass

Large Text (above 18pt) WCAG AAA ✓ Pass

Any Text WCAG AAA × Fail

If you want to check with other color combinations, try the [Color Contrast Checker](#).



## Decimal 15232127 Background



This preview shows how black text looks on a background with the Decimal color 15232127.




This preview shows how white text looks on a background with the Decimal color 15232127.

# Color Blindness Simulation

Color vision deficiency is a very complex topic, and I could not describe the different causes any better than Wikipedia does, so if you want to learn more, you should check out their [article about color blindness](#).

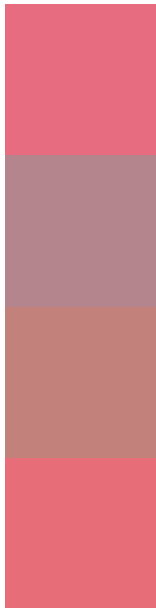
## Dichromacy





**Tritanopia**  
15167093

# Trichromacy



**Original Color**  
15232127

**Protanomaly**  
11830668

**Deuteranomaly**  
12747387

**Tritanomaly**  
15166841

# Monochromacy



**Original Color**  
15232127

**Achromatopsia**  
9671571

**Achromatomaly**  
11699596

# CSS Examples

## Text

The CSS property to change the color of the text to Decimal 15232127 is called "color". The color property can be set on classes, ids or directly on the HTML element.

This example shows how text in the color #E86C7F looks like.

```
.text, #text, p{  
    color:#E86C7F  
}
```

If you want to add a text shadow in that color use the text-shadow property, you can generate a text shadow directly with our [CSS Text Shadow Generator](#).

Here you see how black text with a 4 pixel #E86C7F colored shadow looks like.

```
.shadow{ text-shadow: 4px 4px 2px #E86C7F
}
```

## Border

The CSS property to change the border of an element to Decimal 15232127 is called "border". The border property can be set on classes, ids or directly on the HTML element.

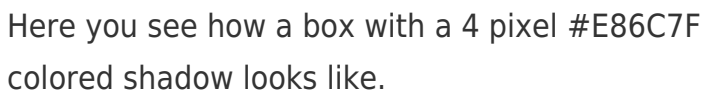
This example shows the color as border, it can be applied via the CSS property "border" or "border-color".

```
.border, #border, table{ border:4px solid
#E86C7F }
```

If only the border color should be changed use the property `border-color`.

```
.border{ border-color:#E86C7F }
```

If you want to add a box shadow in that color use:



Here you see how a box with a 4 pixel #E86C7F colored shadow looks like.

```
.boxshadow{ -moz-box-shadow:4px 4px 4px  
4px #E86C7F; -webkit-box-shadow:4px 4px  
4px 4px #E86C7F; box-shadow:4px 4px 4px  
4px #E86C7F }
```

# Background

The CSS property to change the background color of an element to Decimal 15232127 is called "background". The background property can be set on classes, ids or directly on the HTML element.

```
.background, #background, body{  
background:#E86C7F }
```

If only the background color should be changed can be used:

```
.background{ background-color:#E86C7F }
```

This example shows the color as background, it is applied via the CSS property "background".

To optimize and compress your CSS code, you can use our [online CSS compressor and optimizer](#) based on csstidy. If you want to create a linear or radial gradient as background or border, check our [CSS Gradient Generator](#).



Hey! You found this booklet interesting? Support Converting Colors with the new Membership Option!

The pro membership hides all ads, plus gives you double the colors in the color bucket, and more awesome pro features!

**[Learn more, Memberships starting at \\$2.50/m!](#)**

**Follow me  
on Twitter!**

@ConvertingColor