

Converting Colors

Decimal(15234954)

Have a look what the booklet for
Decimal(15234954) contains.

Decimal(15234954)	3
<i>Conversions</i>	4
<i>Details</i>	6
<i>Harmonies</i>	11
<i>Previews</i>	23
<i>Color Blindness Simulation</i>	26
<i>CSS Examples</i>	29

Color

Decimal(15234954)

Conversions

Conversions Part 1

Format	Color
Hex	E8778A
RGB	232, 119, 138
RGB Percent	91%, 47%, 54%
CMY	0.0902, 0.5333, 0.4588
CMYK	0.00, 0.49, 0.41, 0.09
HSL	350°, 71%, 69%
HSV	350°, 49%, 91%
XYZ	44.4630, 32.1844, 27.9135
YIQ	154.9530, 61.2490, 29.8650

Conversions

Conversions Part 2

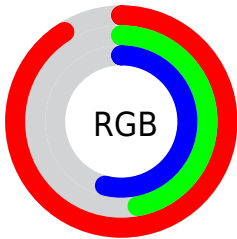
Format	Color
R _Y B	232, 119, 138
Decimal	15234954
CIE Lab	63.50, 45.49, 10.01
CIE LCh	63, 46.578, 12.408
Yxy	32.1844, 0.4252, 0.3078
Android (android.graphics.Color)	4293425034 (0xFFE8778A)
YUV	154.9530, -8.3578, 67.5702
Hunter-Lab	56.7313, 40.6189, 10.5395

Details

The Decimal color **15234954** is a light color, and the websafe version is hex **CC6666**. A complement of this color would be **7858389**, and the grayscale version is **10197915**.

A 20% lighter version of the original color is **16756415**, and **11354712** is the 20% darker color. If you saturate the color by 10%, you get **15229047**, and if you desaturate by 10%, it is **15240861**.

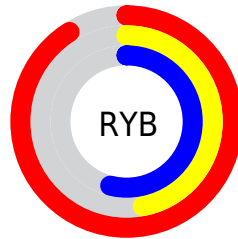
Distribution



Red (91%)

Green (47%)

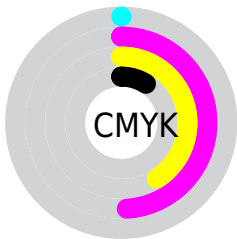
Blue (54%)



Red (91%)

Yellow (47%)

Blue (54%)

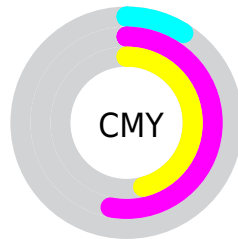


Cyan (0%)

Magenta (49%)

Yellow (41%)

Black (9%)



Cyan (9%)

Magenta (53%)

Yellow (46%)

Brightness & Saturation Gradients

These gradients show how the Decimal color 15234954 changes by changing the brightness by 10 percent. The first figure shows a shift by +10% for each color and the second figure -10%.

Similar to the brightness gradients but the following saturation gradients show a change of the Decimal color 15234954 by changing the saturation by 10% instead.

 15234954

 15234954

16777215

 13261937

 16756415

 11354712

 16763611

 9447233

 16771064

 7603243

 5767191

 4063232

 2031617

 0

 15234954

 15234954

■ 15229047

■ 15240861

■ 15223139

■ 15246769

■ 15216976

■ 15252932

■ 15211069

■ 15258839

■ 15205162

■ 15264746

■ 15204391

■ 15269886

■ 15269887

Harmonies

Analogous

The Analogous color harmony consists of three colors that are next to each other on the color wheel.



14318260



15234954



14712932

Triad

The Triadic color harmony groups three colors that are evenly spaced from another and form a triangle on the color wheel.



15234954



7645018



42472

Complementary

The Complementary color scheme is a pair of colors which are on the opposite of each other on the color wheel.



15234954



7858389

Split Complementary

Split-complementary colors differ from the complementary color scheme. The scheme consists of three colors, the original color and two neighbors of the complement color.



44241



15234954



3386751

Square

The Square scheme is like the rectangle color scheme, but the four colors are evenly spaced on the color wheel.



15234954



10657094



44970



7641323

Rectangle

The Rectangle color scheme consists of four colors that form a rectangle on the color wheel.



15234954



13732432



44970



43235

Sweetspot

The Sweet Spot groups the original color and five complimentary colors.



15234954



16767455



13858792



8415596



0



8421504

Same Dimension

The Same Dimension uses a secret algorithm to generate beautiful new colors.



15234954



16739204



15244151



7563113



11730974



3342345

Inverse Universe

The Inverse Universe completely reimagines the original color for something new.



15234954



16739204



7849192



7563113



11730974



3342345

Previews

White Background



This preview shows how the Decimal color 15234954 looks on a white background.

Color Contrast Check

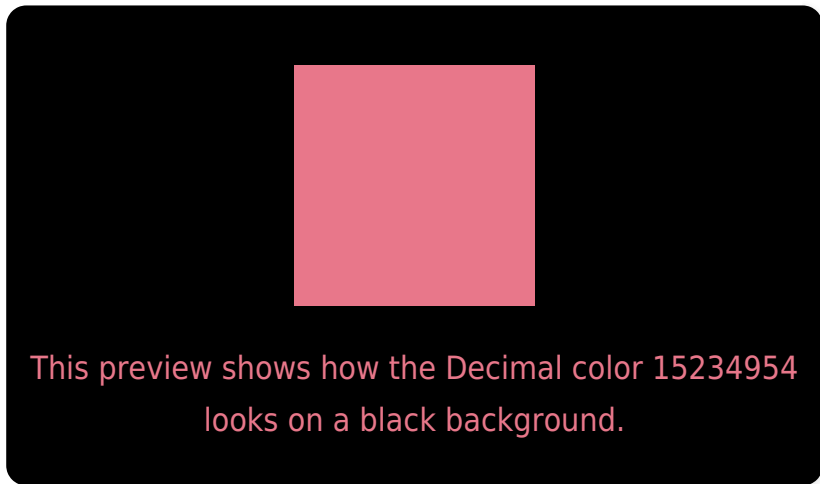
Large Text (above 18pt) WCAG AA × Fail

Any Text WCAG AA × Fail

Large Text (above 18pt) WCAG AAA × Fail

Any Text WCAG AAA × Fail

Black Background



Color Contrast Check

Large Text (above 18pt) WCAG AA ✓ Pass

Any Text WCAG AA ✓ Pass

Large Text (above 18pt) WCAG AAA ✓ Pass

Any Text WCAG AAA ✓ Pass

If you want to check with other color combinations, try the [Color Contrast Checker](#).

Decimal 15234954 Background



This preview shows how black text looks on a background with the Decimal color 15234954.



This preview shows how white text looks on a background with the Decimal color 15234954.

Color Blindness Simulation

Color vision deficiency is a very complex topic, and I could not describe the different causes any better than Wikipedia does, so if you want to learn more, you should check out their [article about color blindness](#).


Dichromacy



Original Color
15234954

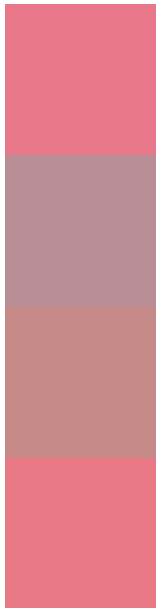
Protanopia
10262941

Deuteranopia
11637893



Tritanopia
15169921

Trichromacy



Original Color
15234954

Protanomaly
12094870

Deuteranomaly
12945799

Tritanomaly
15169668

Monochromacy



Original Color
15234954

Achromatopsia
10197915

Achromatomaly
12029589

CSS Examples

Text

The CSS property to change the color of the text to Decimal 15234954 is called "color". The color property can be set on classes, ids or directly on the HTML element.

This example shows how text in the color #E8778A looks like.

```
.text, #text, p{  
  color:#E8778A  
}
```

If you want to add a text shadow in that color use the text-shadow property, you can generate a text shadow directly with our [CSS Text Shadow Generator](#).

Here you see how black text with a 4 pixel #E8778A colored shadow looks like.

```
.shadow{ text-shadow: 4px 4px 2px #E8778A
}
```

Border

The CSS property to change the border of an element to Decimal 15234954 is called "border". The border property can be set on classes, ids or directly on the HTML element.

This example shows the color as border, it can be applied via the CSS property "border" or "border-color".

```
.border, #border, table{ border:4px solid
#E8778A }
```

If only the border color should be changed use the property `border-color`.

```
.border{ border-color:#E8778A }
```

If you want to add a box shadow in that color use:

Here you see how a box with a 4 pixel #E8778A colored shadow looks like.

```
.boxshadow{ -moz-box-shadow:4px 4px 4px  
4px #E8778A; -webkit-box-shadow:4px 4px  
4px 4px #E8778A; box-shadow:4px 4px 4px  
4px #E8778A }
```

Background

The CSS property to change the background color of an element to Decimal 15234954 is called "background". The background property can be set on classes, ids or directly on the HTML element.

```
.background, #background, body{  
background:#E8778A }
```

If only the background color should be changed can be used:

```
.background{ background-color:#E8778A }
```

This example shows the color as background, it is applied via the CSS property "background".

To optimize and compress your CSS code, you can use our [online CSS compressor and optimizer](#) based on csstidy. If you want to create a linear or radial gradient as background or border, check our [CSS Gradient Generator](#).

Hey! You found this booklet interesting? Support Converting Colors with the new Membership Option!

The pro membership hides all ads, plus gives you double the colors in the color bucket, and more awesome pro features!

[Learn more, Memberships starting at \\$2.50/m!](#)

**Follow me
on Twitter!**

@ConvertingColor